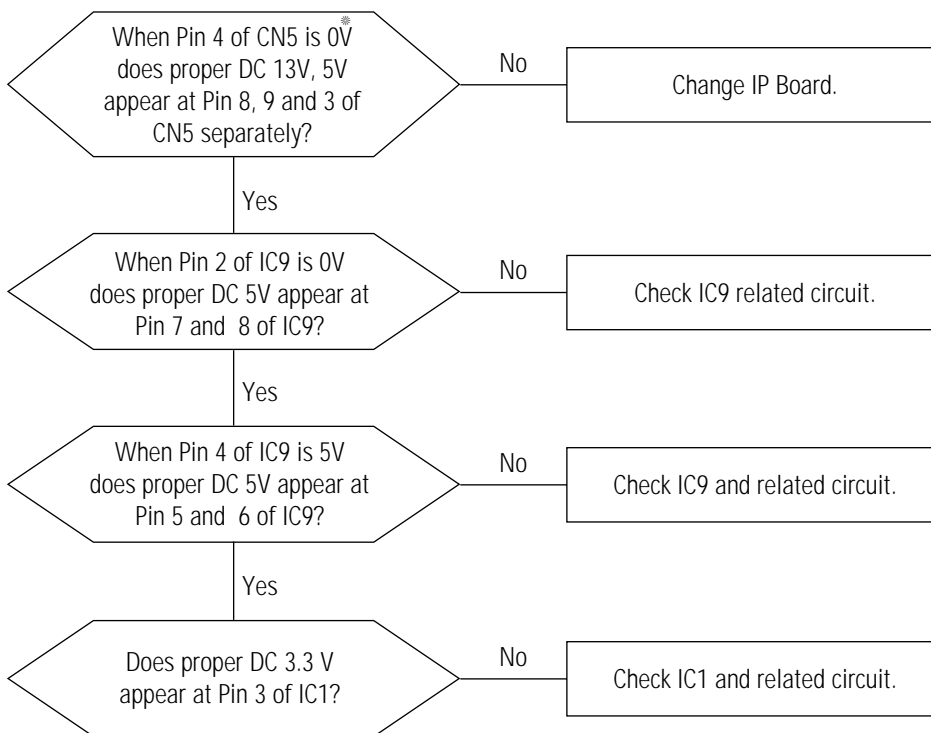


## 5 Troubleshooting

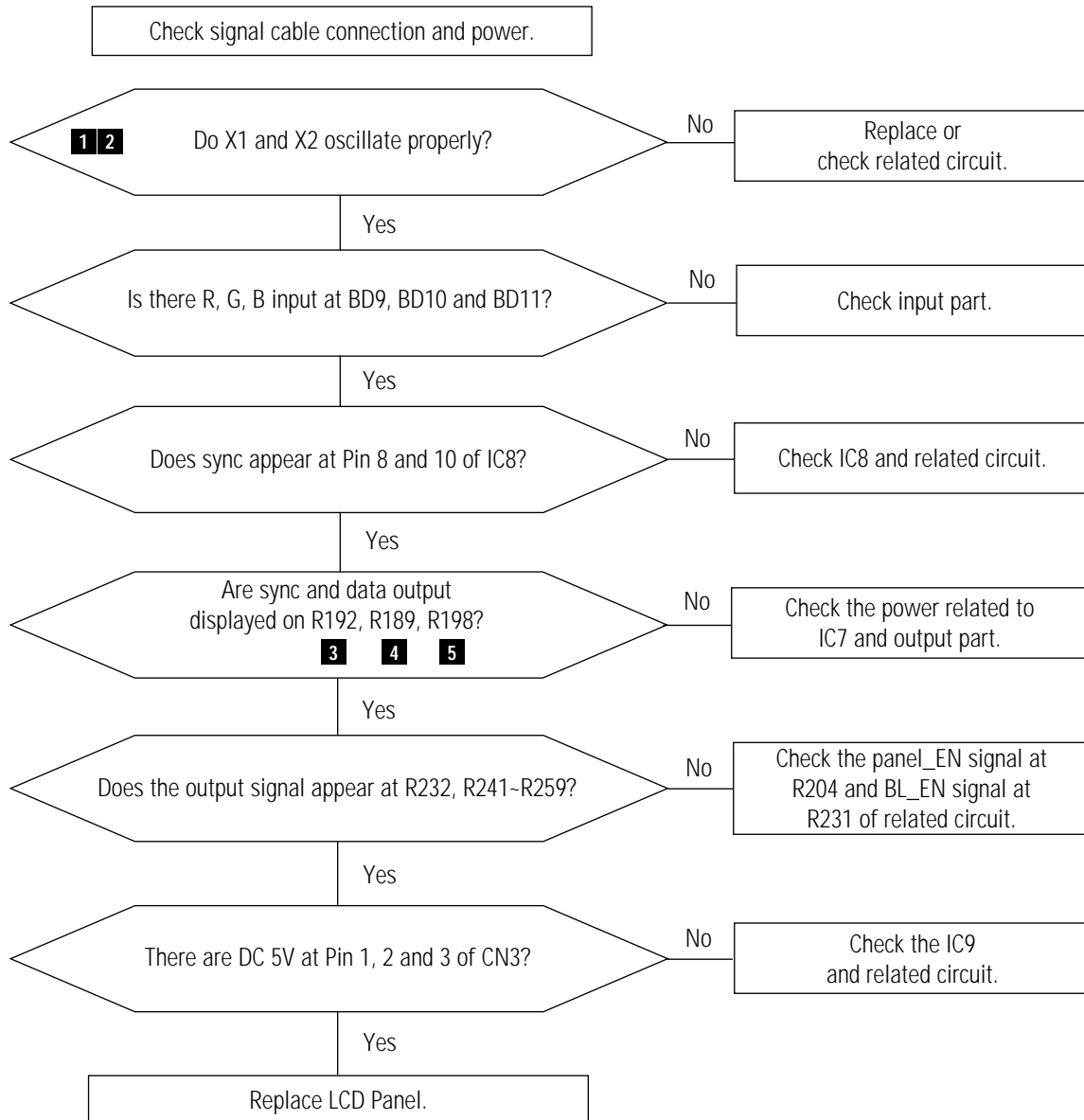
- Notes:**
- Before troubleshooting, setup the PC's display as below.
    - Resolution: 1280 x 1024
    - H-frequency: 64 kHz
    - V-frequency: 60 Hz
  - If no picture appears, make sure the power cord is correctly connected.
  - Check the following circuits.
    - No raster appears: Audio PCB, SMPS PCB, Main PCB
    - 13V develop but no screen: Main PCB
    - 13V does not develop: Main PCB
  - If you push and hold the "EXIT" button for more than 5 seconds, the monitor automatically returns to the factory preset.

### 5-1 No Power

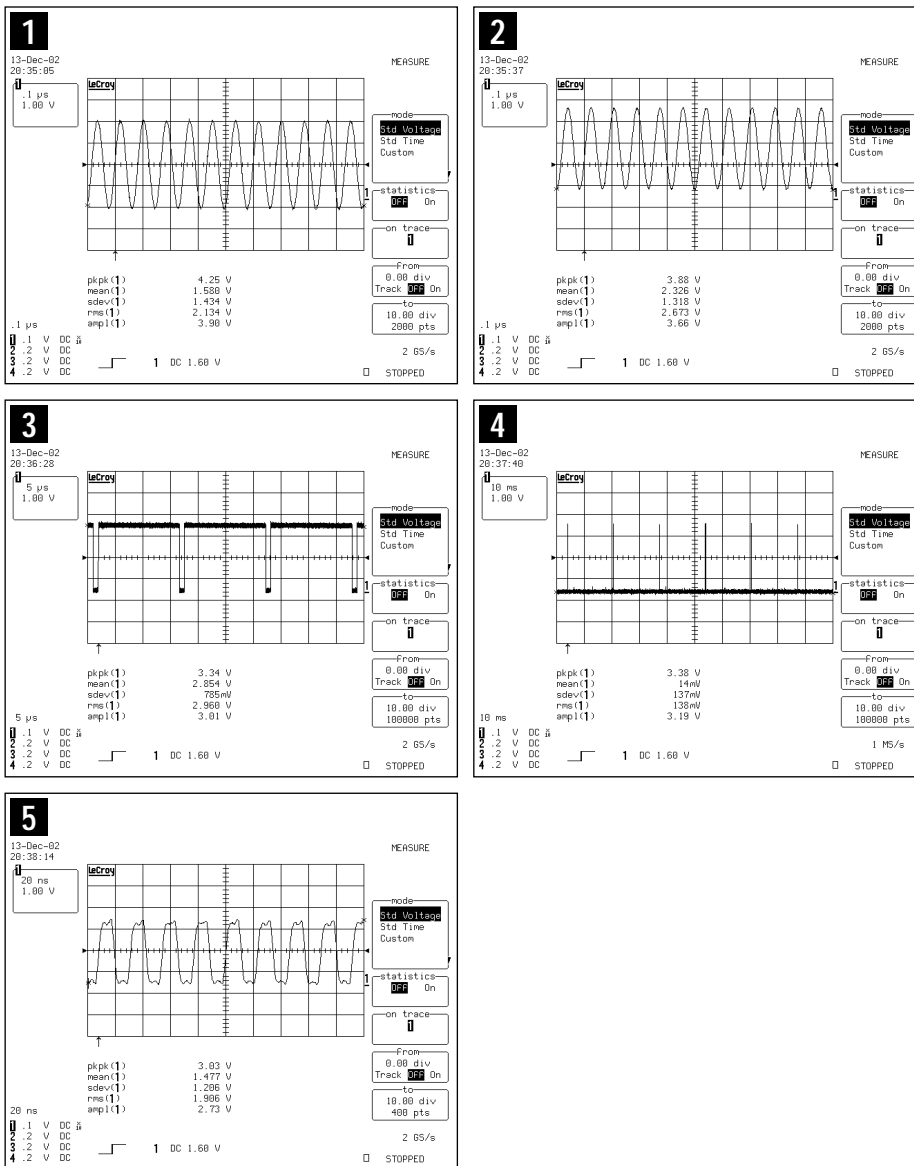


\* 0V means power on state.  
When the monitor work well except DPMS and power switch off,  
0V should be applied to number 4 of CN5.

## 5-2 No Video



# WAVEFORMS



2

13-Dec-02  
20:35:37

MEASURE

node

Std Voltage

Std Time

Custom

statistics

On

on trace

1

from

0.00 div

Track

On

to

10.00 div

2000 pts

pkpk(1)

3.88 V

mean(1)

2.326 V

sdev(1)

1.318 V

rms(1)

2.673 V

ampl(1)

3.66 V

1 V DC

2 65/s

1 DC 1.00 V

STOPPED

3

13-Dec-02  
20:36:28

MEASURE

node

Std Voltage

Std Time

Custom

statistics

On

on trace

1

from

0.00 div

Track

On

to

10.00 div

100000 pts

pkpk(1)

3.34 V

mean(1)

2.854 V

sdev(1)

785mV

rms(1)

2.960 V

ampl(1)

3.01 V

1 V DC

2 65/s

1 DC 1.00 V

STOPPED

4

13-Dec-02  
20:37:40

MEASURE

node

Std Voltage

Std Time

Custom

statistics

On

on trace

1

from

0.00 div

Track

On

to

10.00 div

100000 pts

pkpk(1)

3.38 V

mean(1)

14mV

sdev(1)

137mV

rms(1)

138mV

ampl(1)

3.19 V

1 V DC

1 MS/s

1 DC 1.00 V

STOPPED

5

13-Dec-02  
20:38:14

MEASURE

node

Std Voltage

Std Time

Custom

statistics

On

on trace

1

from

0.00 div

Track

On

to

10.00 div

400 pts

pkpk(1)

3.03 V

mean(1)

1.477 V

sdev(1)

1.206 V

rms(1)

1.906 V

ampl(1)

2.73 V

1 V DC

2 65/s

1 DC 1.00 V

STOPPED

## Memo