
3 Disassembly and Reassembly

This section of the service manual describes the disassembly and reassembly procedures for the NB15AS* monitor.

WARNING: This monitor contains electrostatically sensitive devices. Use caution when handling these components.

3-1 Disassembly

Cautions :

1. Disconnect the monitor from the power source before disassembly.
2. Follow these directions carefully; never use metal instruments to pry apart the cabinet.
3. R/Cover opening jig : BH81-00001A



1. Place monitor face down on cushioned table. Remove 2 screws from grip on the stand and remove signal cable.
(CAUTION : Remove screw grip don't on the stand than fall the stand from the top side of the foot.)



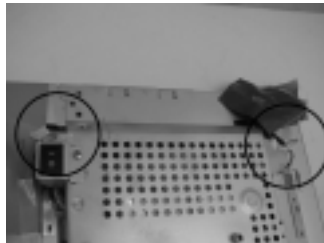
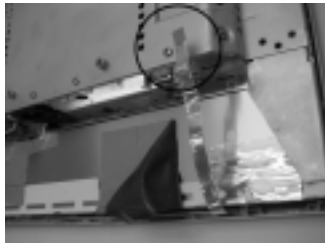
2. Remove front cover and remove back cover.



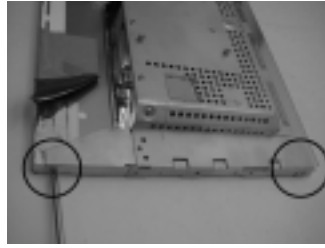
(NB17A*)

(NB19A*)

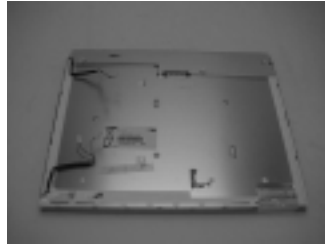
3. Remove 2 screws shield TCO and remove 1 screw shield power.



4. Remove casket tape and disconnect function cable, inverter cable.

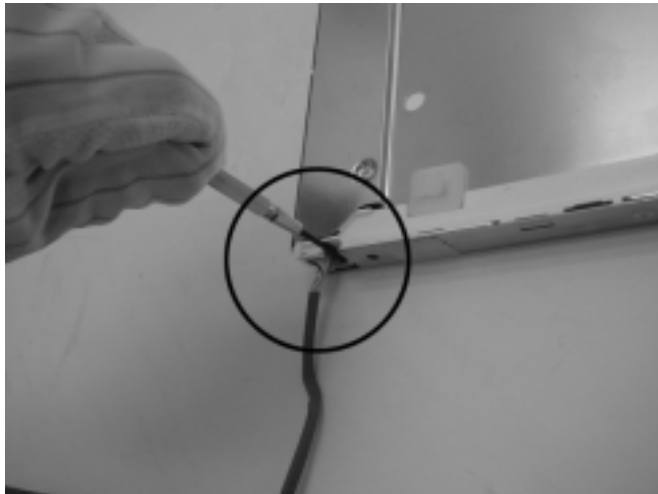


5. Disconnect LVDS cable and remove 4 screws from the shield.
(the corner of the shield 4 screws)



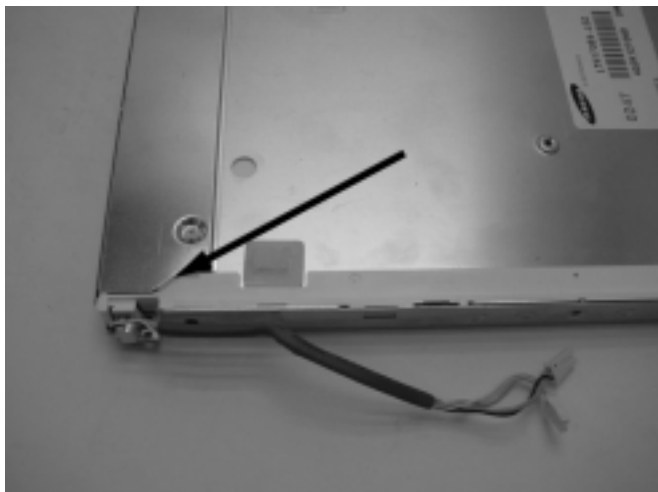
6. Lift up shield from the panel.

3-2 Replacement Order of Lamp Assemblies

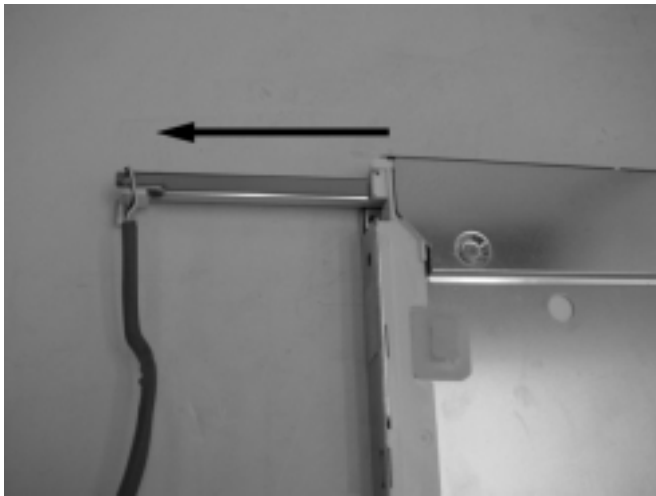


1. Remove 2 screws from LCD module.
(top & bottom)

Note : Always clear the work table
before operation.



2. Slide out the lamp unit.
Do not use excessive force.



3. Take out the lamp unit from the LCD module.



4. This picture shows the complete lamp ass'y removal from LCD module.

- * Replacement of lamp unit should be done at the power off state and with a recommended clean bench condition.

3-3 Reassembly

Reassembly procedures are in the reverse order of disassembly procedures.

Memo