

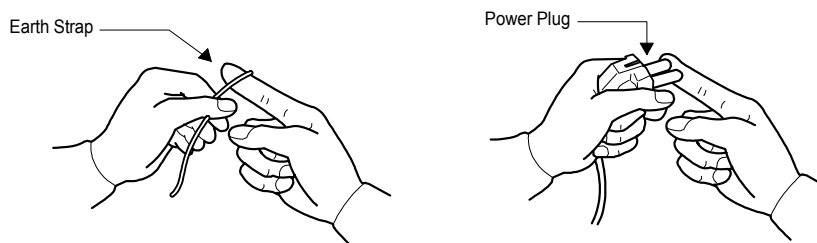
5. TROUBLE DIAGNOSIS

※As the structure of the automatic micro-computer washing machine is comparatively complicated, there are service calls even if not defective. This section provides the information for exact trouble diagnosis and suitable repair guide to help customers.

5-1. CAUTIONS FOR THE REPAIR AND REPLACEMENT

Please follow the instructions below for trouble diagnosis and parts replacement.

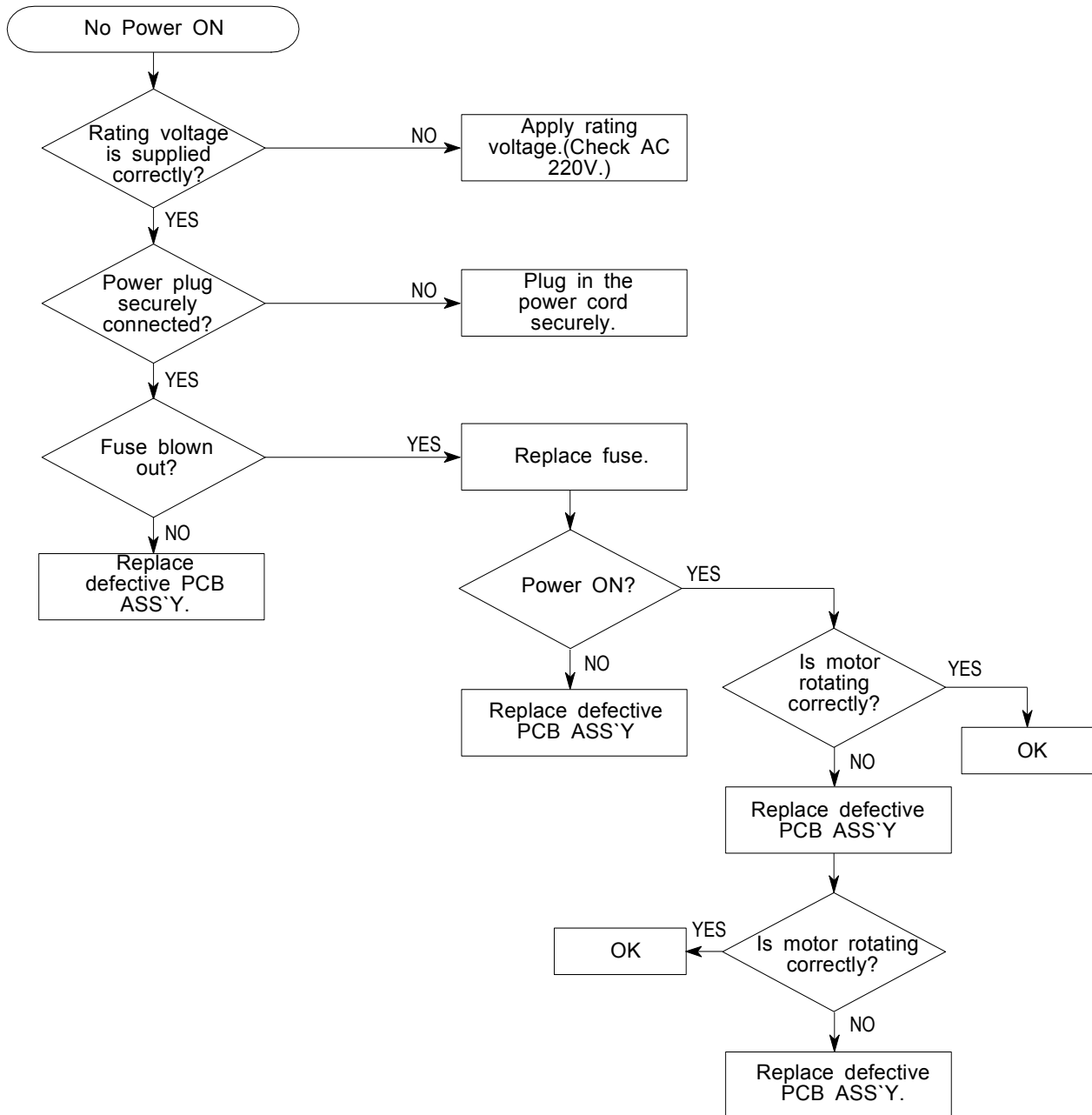
- 1) As the electric components are easily damaged by the electric charge from the resin part of the washing machine or the human body, be sure to ground or remove the potential difference between the human body and the washing machine by touching once the power supply plug if you need to contact PCB parts for servicing.



- 2) As the parts on PCB are coated by urethane, they can not be tested by using the test bar of the meter. Check the normality by using the test mode method and then diagnose the trouble in an appropriate procedure.

5-2. TROUBLESHOOTING

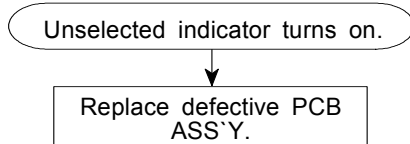
- If you plug in the power cord and turn Power S/W on, memorized data is displayed.
If any data is not displayed, check the followings.



- Pressing a key does not give beep sounds while the indicator turns on, or the indicator does not show at all. Display turns on.

PCB ASS'Y is defective.
Replace.

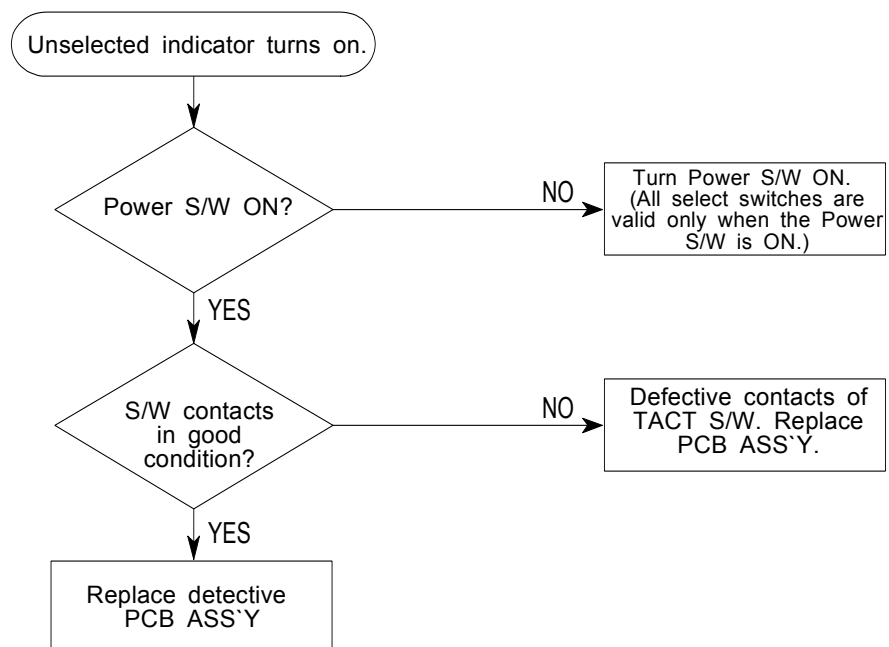
- Pressing a key does not give beep sounds while the indicator turns on, or the indicator does not show at all. Display turns on.



5-2-1 Troubleshooting - Control Panel

- Pressing the select switch does not give beep sound and the indicator does not turn on.

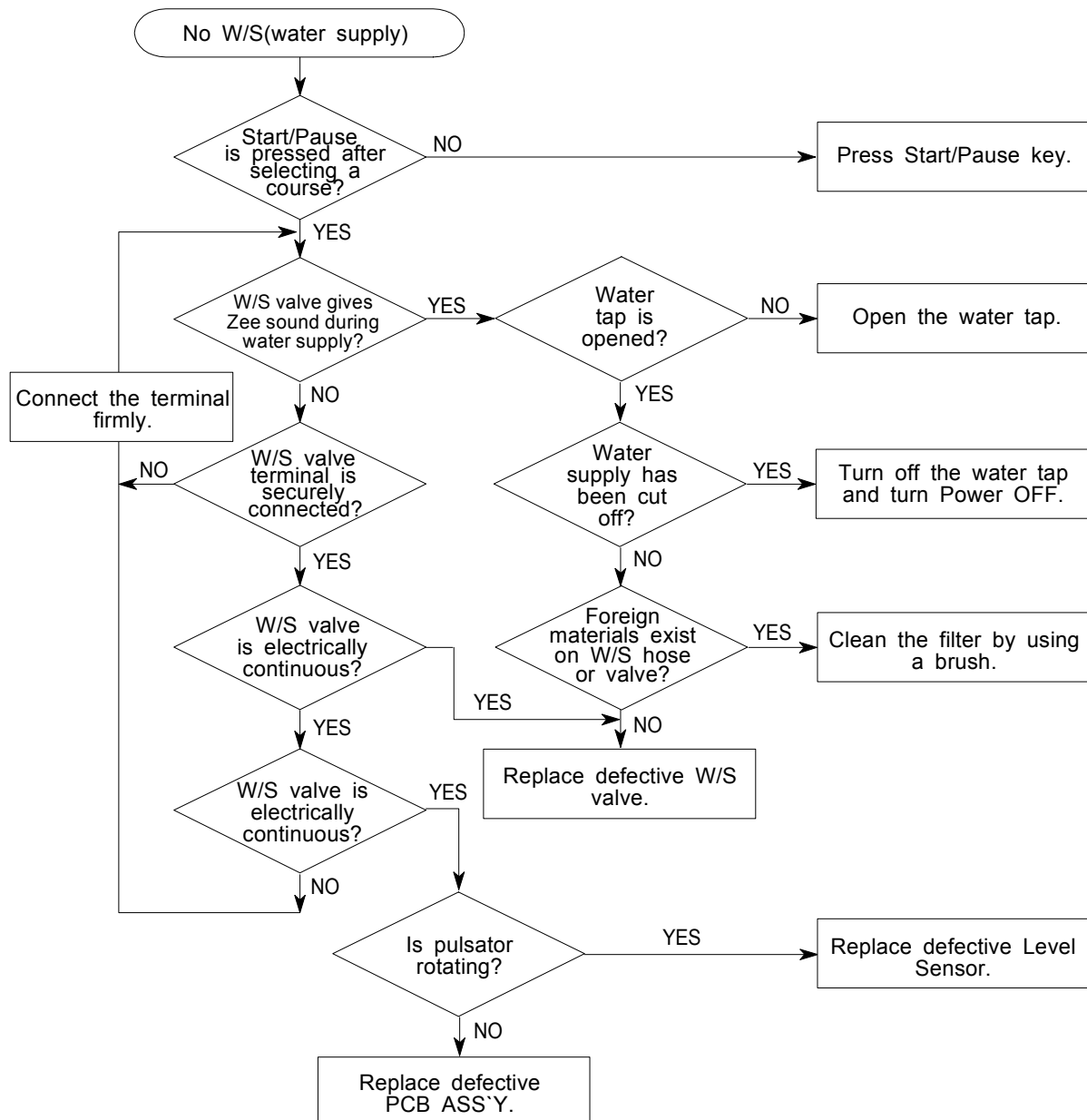
※ When in an ERROR mode, that is, when "E" shows in the display, pressing any key is not valid.
Turn POWER OFF and start again.



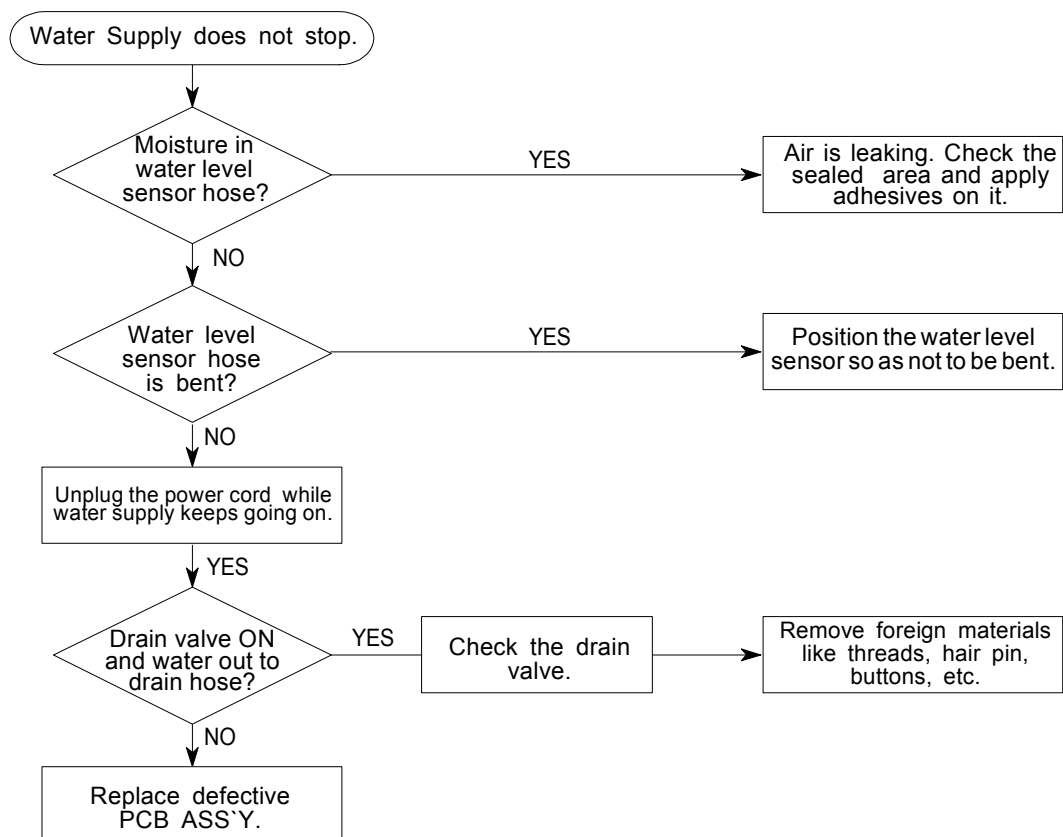
5-2-2 Troubleshooting - Driving Unit

The description below is based on the condition that Power Supply Unit and Key-In Unit are working correctly. It is based on the status after a Start key is pressed.

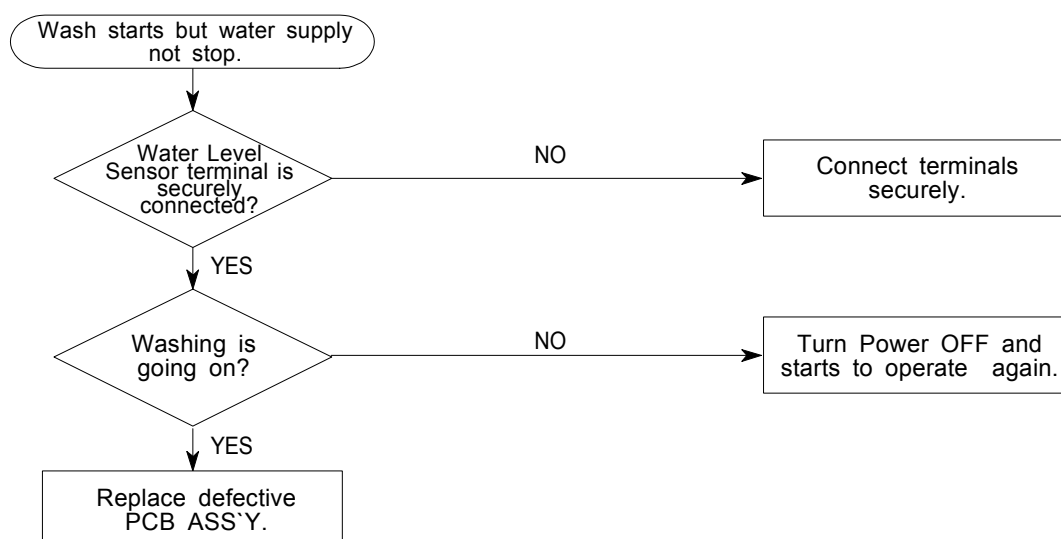
1. No Water Supply



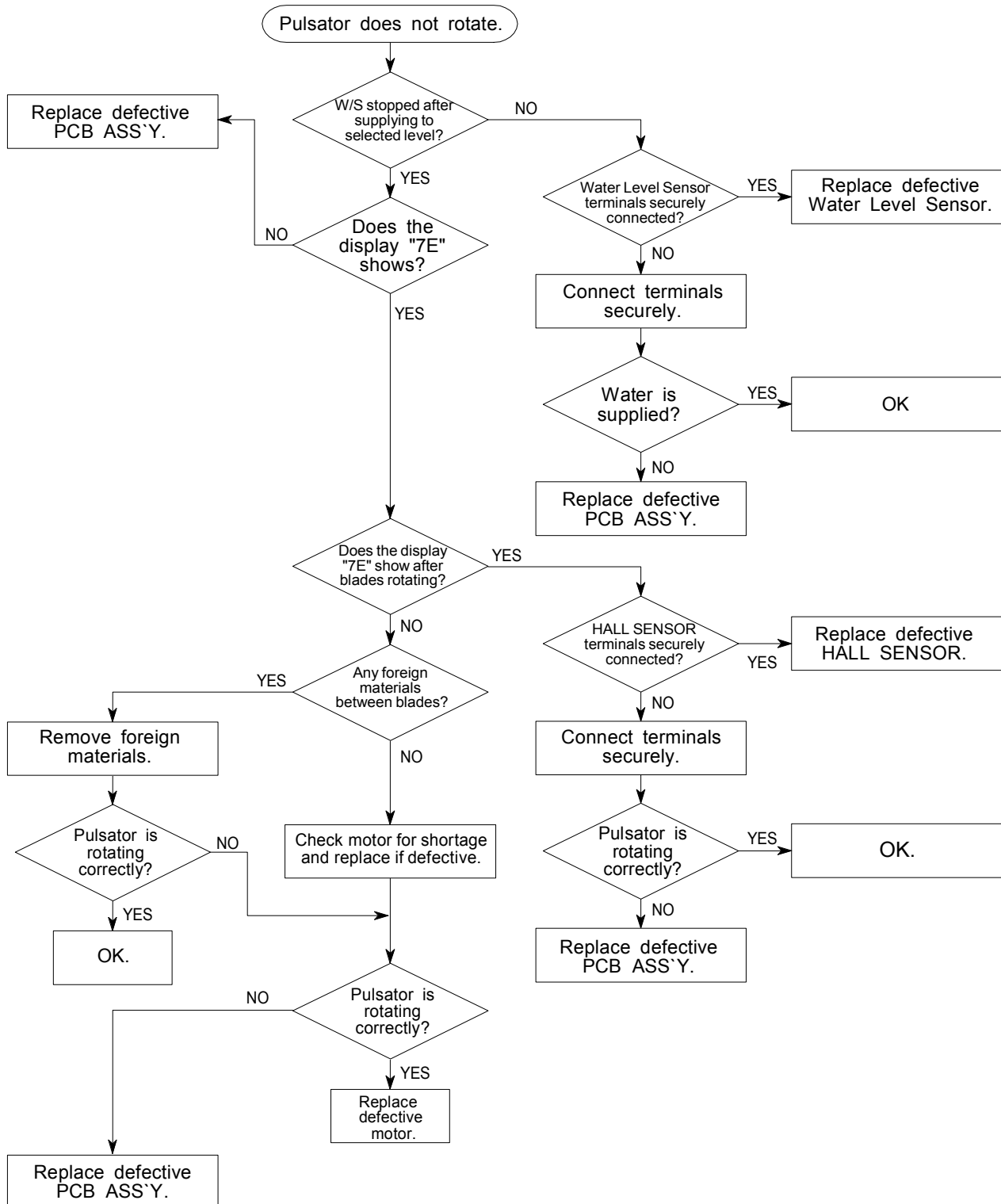
2. Water Supply does not stop and the washing process does not start either.



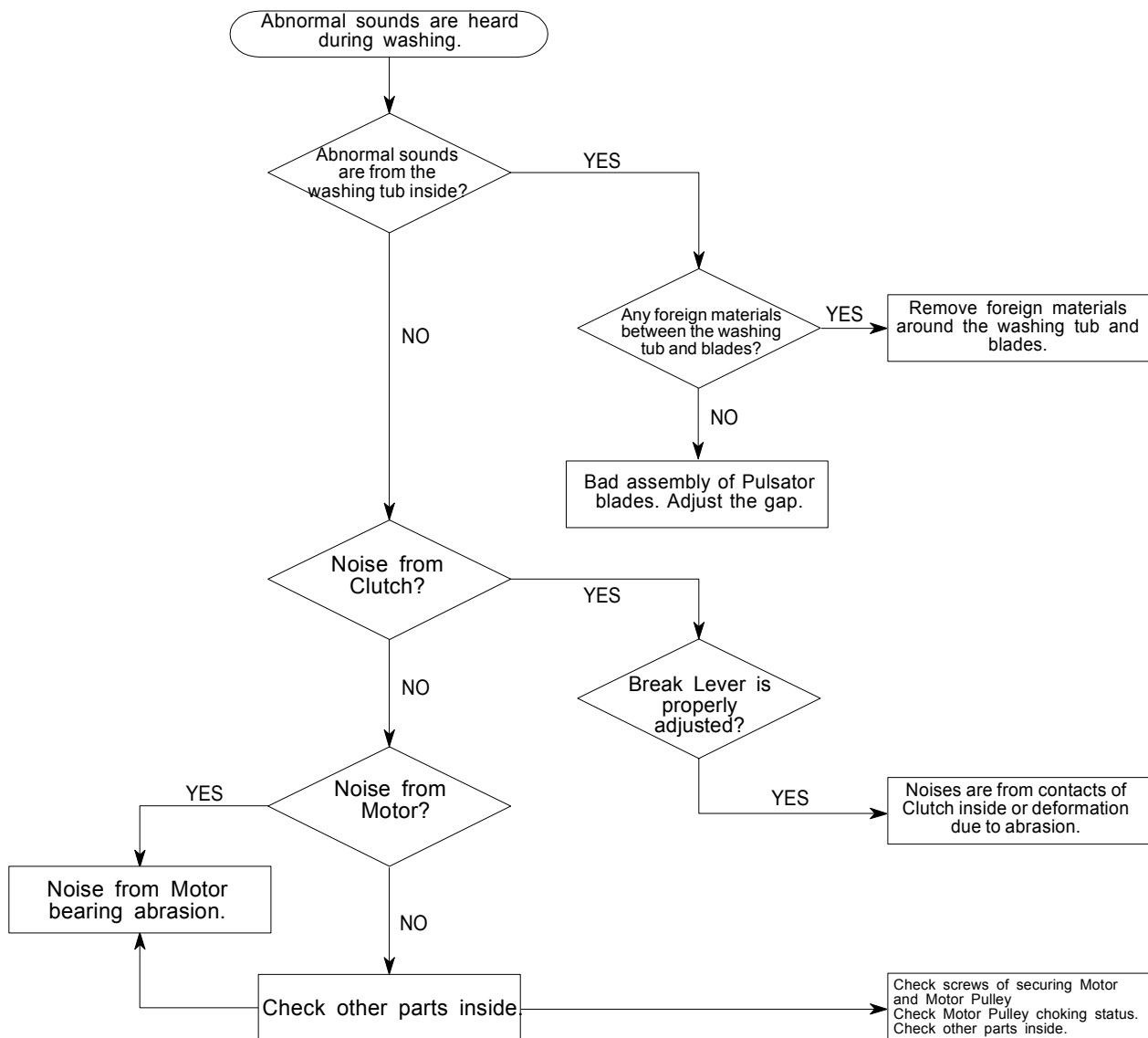
3. Water Supply does not stop but the washing process starts to operates.



4. Pulsator does not rotate.



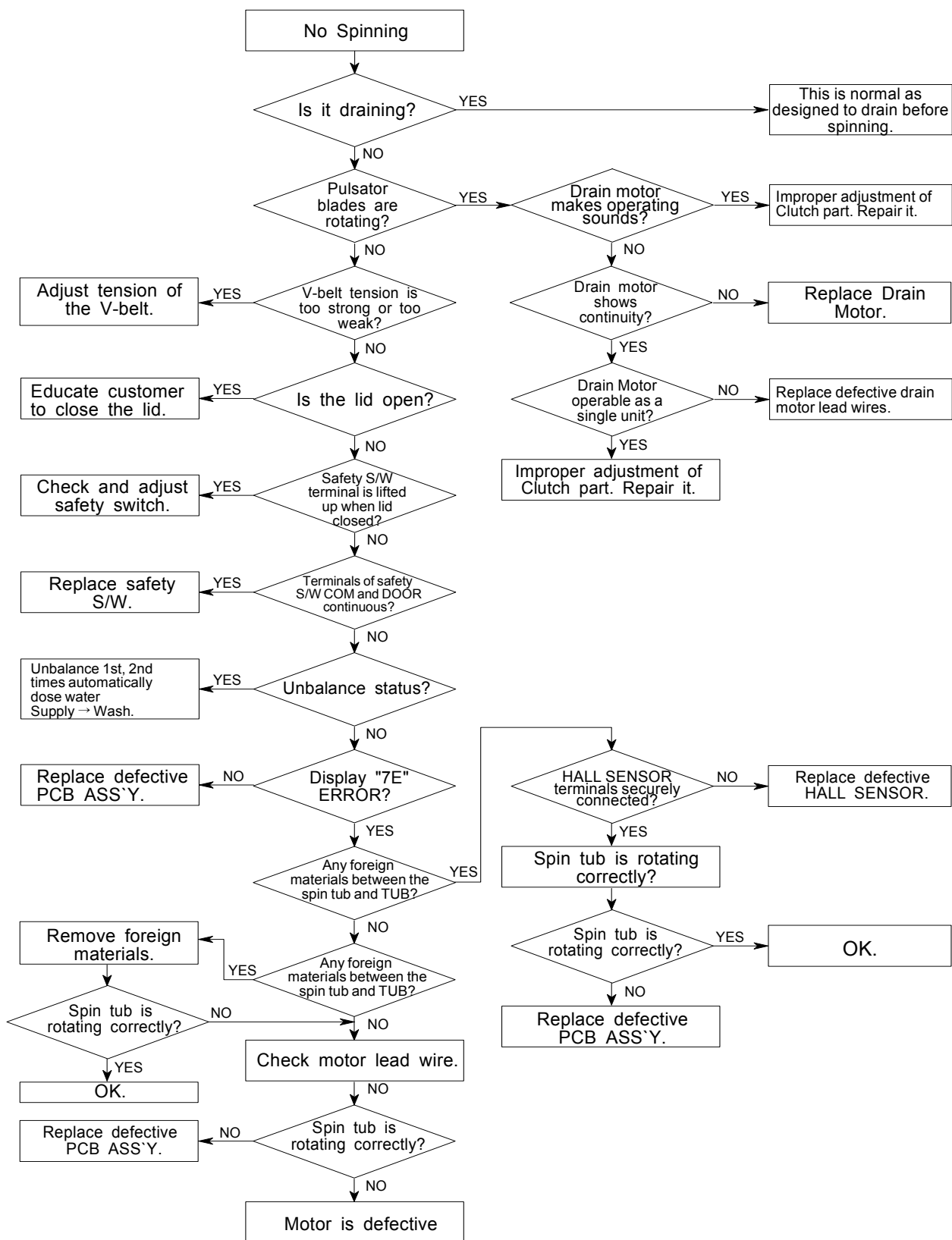
5. Abnormal sounds are heard during washing.



※ This not a problem.

The 'Sha-ah' sounds may be heard when the Spin tub comes to a halt but that is not problem of the washing machine as they are coming from normal water flowing inside the spin tub by auto balancing function.

6. No Spinning



7. No Draining

