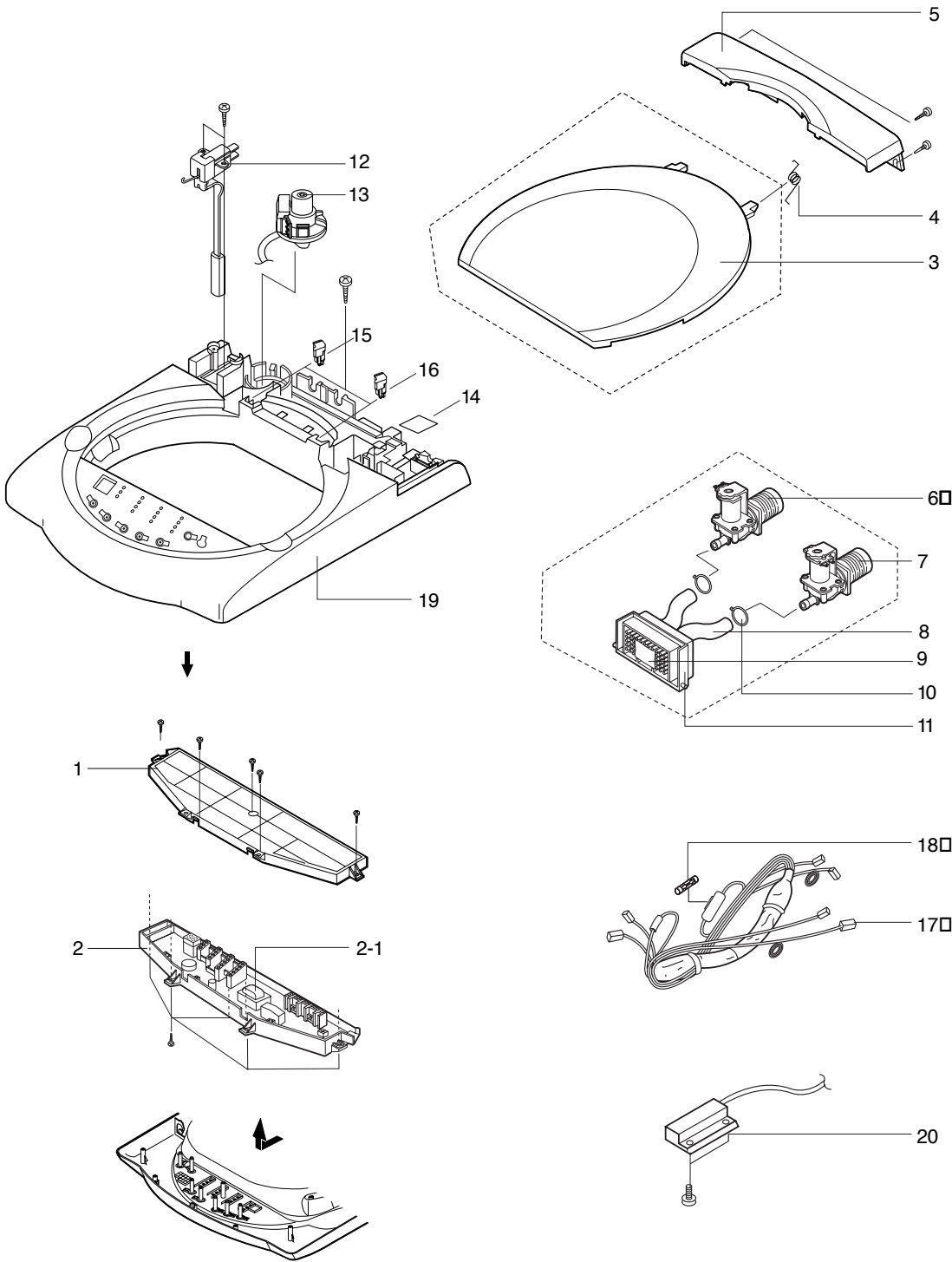
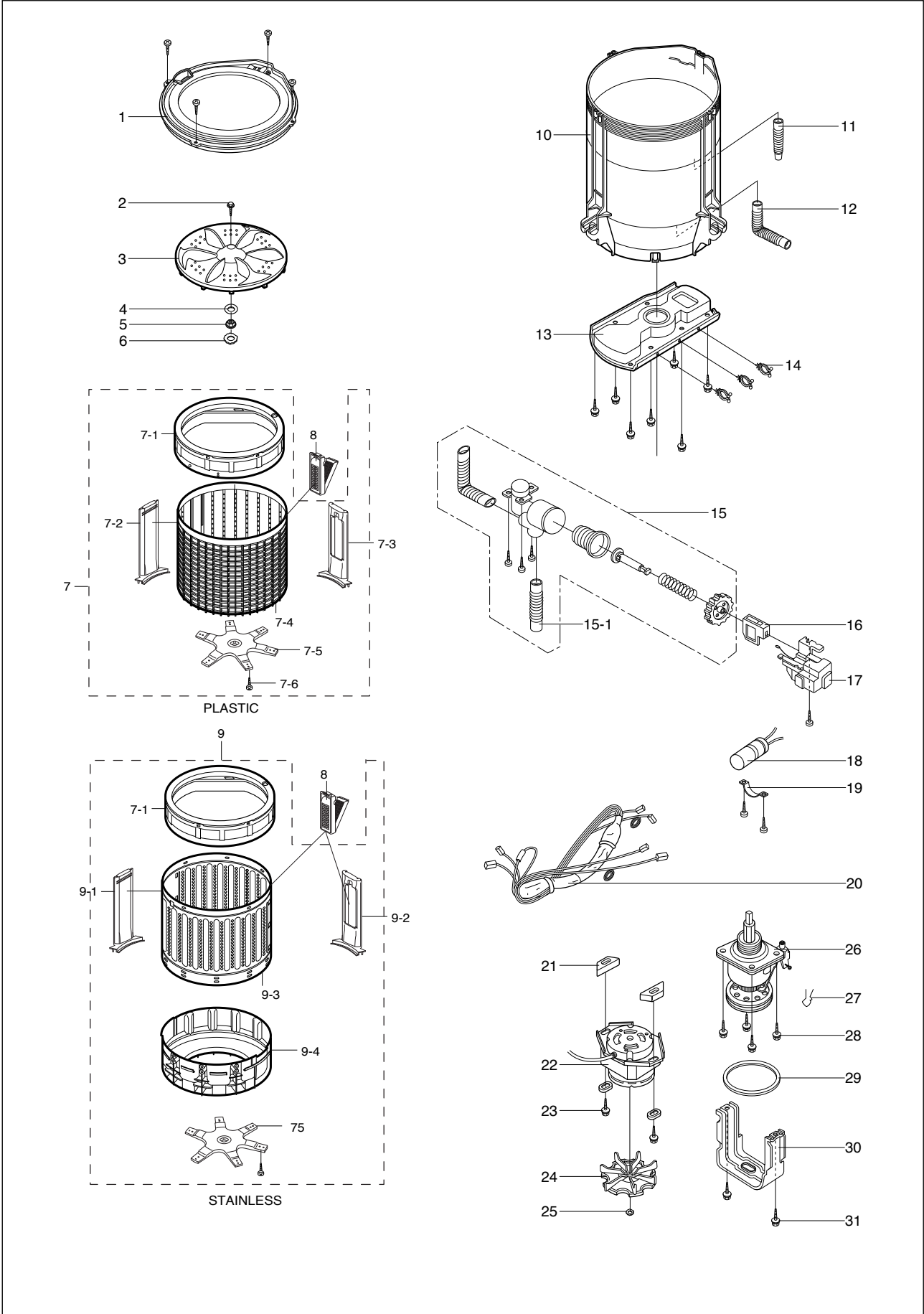


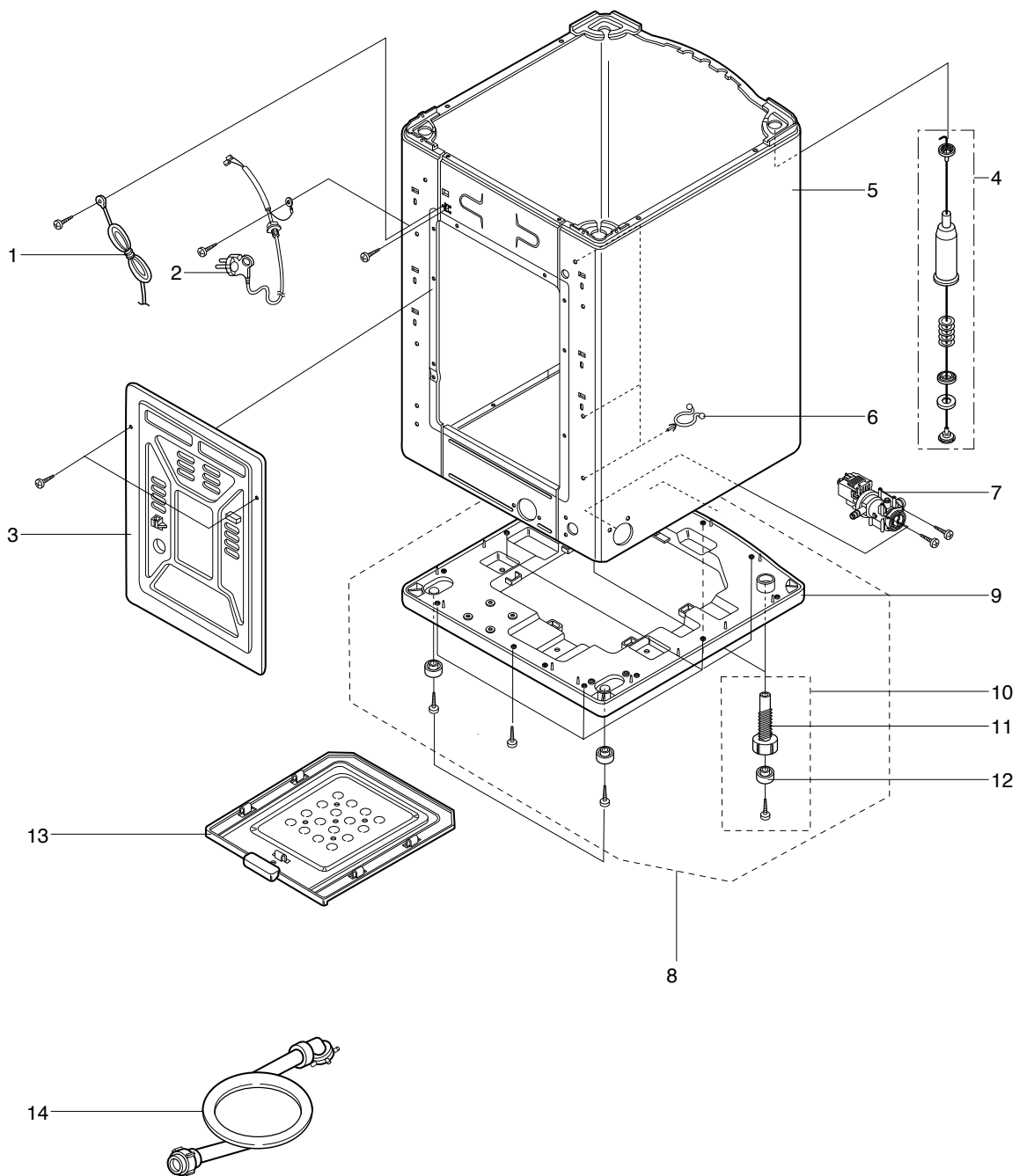
8. Exploded Views



NO.	CODE-NO	DESCRIPTION	SPECIFICATION	Q'TY	REMARK
1	DC64-00015B	NLAY-PANEL	COLD*ONLY	1	ENG
2	DC96-00062A	ASS'Y-P.C.B URETHAN	SW70A1(P)	1	COLD ONLY 220V/50HZ
2-1	DC26-00002A	TRANS-FORMER	SW70A1(P)	1	220V/ 50,60HZ
3	DC97-00161A	ASS'Y LID T.C	ABS(CRYSTAL)	1	SW70A1(P)
4	DC61-00062A	SPRING-Q(R)	STS304	1	
5	DC61-10729C	COVER-T.C	ABS(L/GRY)	1	SW70A1
	DC61-10729D	COVER-T.C	ABS(L/GRY)	1	SW70B1
6	DC62-30310H	VALVE-WATER	HOT	1	110/120V/50.60HZ
	DC62-30310E	VALVE-WATER	HOT	1	220/240V/50,60HZ
7	DC62-30310G	VALVE-WATER	COLD	1	110/120V/50.60HZ
	DC62-30310F	VALVE-WATER	COLD	1	220/240V/50,60HZ
8	DC62-00004A	HOSE-INLET	NBR	2	
9	DC62-00012A	FILTER-GUIDE	FOAM	1	
10	DC65-10001B	CABLE-TIE	DA-100	4	
11	DC61-00020A	GUIDE-WATER	PP,NTR	1	HOT*COLD
	DC61-00020B	GUIDE-WATER	PP,NTR	1	COLD ONLY
12	DC90-11054S	ASS'Y-CHECKER S/W	SW70A1	1	NO-COVER
13	DC32-30006M	SENSOR-PRESSURE	DN-S12	1	TERMINAL-TYPE
14	DC66-10003A	WIRE-VINYL	L180	1	
15	DC61-20226J	DOOR-HINGE(L)	POM	1	L/GRY
16	DC61-20226K	DOOR-HINGE(R)	POM	1	L/GRY
17	DC96-00055A	ASS'Y-MAIN WIRE HARNESS	SW70A1	1	COLD-ONLY
	DC96-00040A	ASS'Y-MAIN WIRE HARNESS	SW70A1	1	COLD*HOT
18	3601-000485	FUSE-FERRULE	250V,10A	1	
19	DC61-10728B	COVER-TOP	ABS(L/GRY)	1	SW70A1(P)
20	DC34-30006H	SWITCH REED	5V,0.3A	1	



NO.	CODE-NO	DESCRIPTION	SPECIFICATION	Q'TY	REMARK
1	DC61-10236A	COVER-TUB	PP	1	PP
2	DC60-00004A	BOLT-PULSATOR	M6*20.5, STS	1	
3	DC66-50194A	PULSATOR	PP	1	
4	DC60-60003B	WASHER-PULSATOR		1	
5	DC60-50004A	NUT-SPIN	ALDC M24	1	
6	DC60-60015A	WASHER-PLAIN	24.2-35*T1.0, STS304	1	
7	DC97-00113A	ASS'Y-S.BASKET SPIN	SW70A1(P), SW70B1(P)	1	
7-1	DC97-00033A	ASS'Y-BALANCER	P.P,PANTON-COOL GRY	1	
7-2	DC61-60524A	GUIDE-W/F	PP, WATER-FALL	1	
7-3	DC61-60525A	GUIDE-W/F	PP, FILTER	1	
7-4	DC61-30123A	BASKET-SPIN	PP	1	MAGIC-FILTER STAINLESS FOR STAINLESS FOR STAINLESS FOR STAINLESS STAINLESS
7-5	DC66-40010A	FLANGE-SHAFT	ALDE	1	
8	DC97-00114A	ASS'Y-FILTER	ABS	1	
9	DC97-00155A	ASS'Y-S.BASKET SPIN	SW75A1(P),SW75B1(P)	1	
9-1	DC61-00016A	GUIDE-W/F	WATERFALL	1	
9-2	DC61-00015A	GUIDE-W/F	FILTER	1	
9-3	DC61-30124A	BASKET-BOWL	P.P	1	
9-4	DC61-30125A	BASKET-WAPPER	STS	1	
10	DC61-30100A	TUB-OUTER	PP	1	
11	DC62-10293A	HOSE-DRAIN	EPDM,245mm	1	PUMP
12	DC62-10092C	HOSE-PUMP	EPDM, 349.5mm	1	PUMP
13	DC61-70063A	DIE-MOTOR	SBHG1	1	NO PUMP
14	6046-000311	STAND OFF	NYLON66	5	
15	DC91-10255A	ASS'Y-CASE D.V		1	
15-1	DC91-10363A	ASS'Y-CUFF HOSE	EPDM(154mm)	1	NO PUMP
16	DC66-30027C	LINK	POM	1	BLK
17	DC31-20014B	MOTOR-DRAIN	220/240V 50HZ,60HZ	1	BKT-HIGH
18	DC62-50011F	CONDENSER-M.F	400VAC 12uF	1	220V/50HZ
19	DC61-40077A	HOLDER-CONDENSER	PP	1	60HZ
20	DC96-00056A	ASS'Y-WIRE HARNESS	SW70A1	1	NO PUMP PUMP
	DC96-00039A	ASS'Y-WIRE HARNESS	SW70A1	1	
21	DC61-60026A	CUSHION-MOTOR	FRPP	2	
22	DC31-00005A	MOTOR-WASH	220V 50HZ	1	PUMP
23	DC91-11258U	ASS'Y-SCREW	M8*30	2	
24	DC66-10174A	PULLEY-MOTOR	50HZ	1	
25	DC60-50150A	NUT-HEX	M8*6.5	2	50HZ
26	DC97-00347A	ASS'Y-SHAFT	SEM-50D1(SEC)	1	
27	DC60-80017B	PIN-LINK		1	
28	DC91-11258E	ASS'Y-SCREW	M8*20	4	
29	DC66-10045D	BELT-V	M20.5(M20.6)	1	
30	DC61-40053B	SADDLE	EGI	1	
31	DC60-20064C	SCREW-TAPPING	6.2*20	2	



NO.	CODE-NO	DESCRIPTION	SPECIFICATION	Q'TY	REMARK
1		ASSY-WIRE EARTH	2.6m	1	OPTION
2	DC90-10065C	ASS'Y-POWER CORD		1	
3	DC61-10226A	COVER-BACK	PP	1	
4	DC97-00121A	ASS'Y-DAMPER	FRONT/RED	2	
	DC97-00121B	ASS'Y-DAMPER	REAR/NTR	2	
5	DC97-00107A	ASS'Y-FRAME SBHG1-A		1	NO PUMP, NO-HANDLE
	DC97-00107B	ASS'Y-FRAME SBHG1-A		1	PUMP, NO-HANDLE
6	6046-000310	STAND OFF		7	
7		ASS'Y-PUMP DRAIN		1	
8	DC91-11905A	ASS'Y-BASE	PP	1	
9	DC61-30314A	BASE	PP	1	
10	DC97-00170A	ASSY-LEG	SW70A1(P)	2	
11	DC61-50009C	LEG-ADJUST	PP	2	
12	DC61-50015B	LEG-RUBBER	BUTYL, SW70A1, BLK	4	
13	DC61-20211A	(PAN-SILENT)SHUTTER	PP	1	OPTION
14	DC91-11790A	ASS'Y-HOSE WATER	EXP/1.0M/COLD	1	NIX