

FERNSEHEN TELEVISION TÉLÉVISION

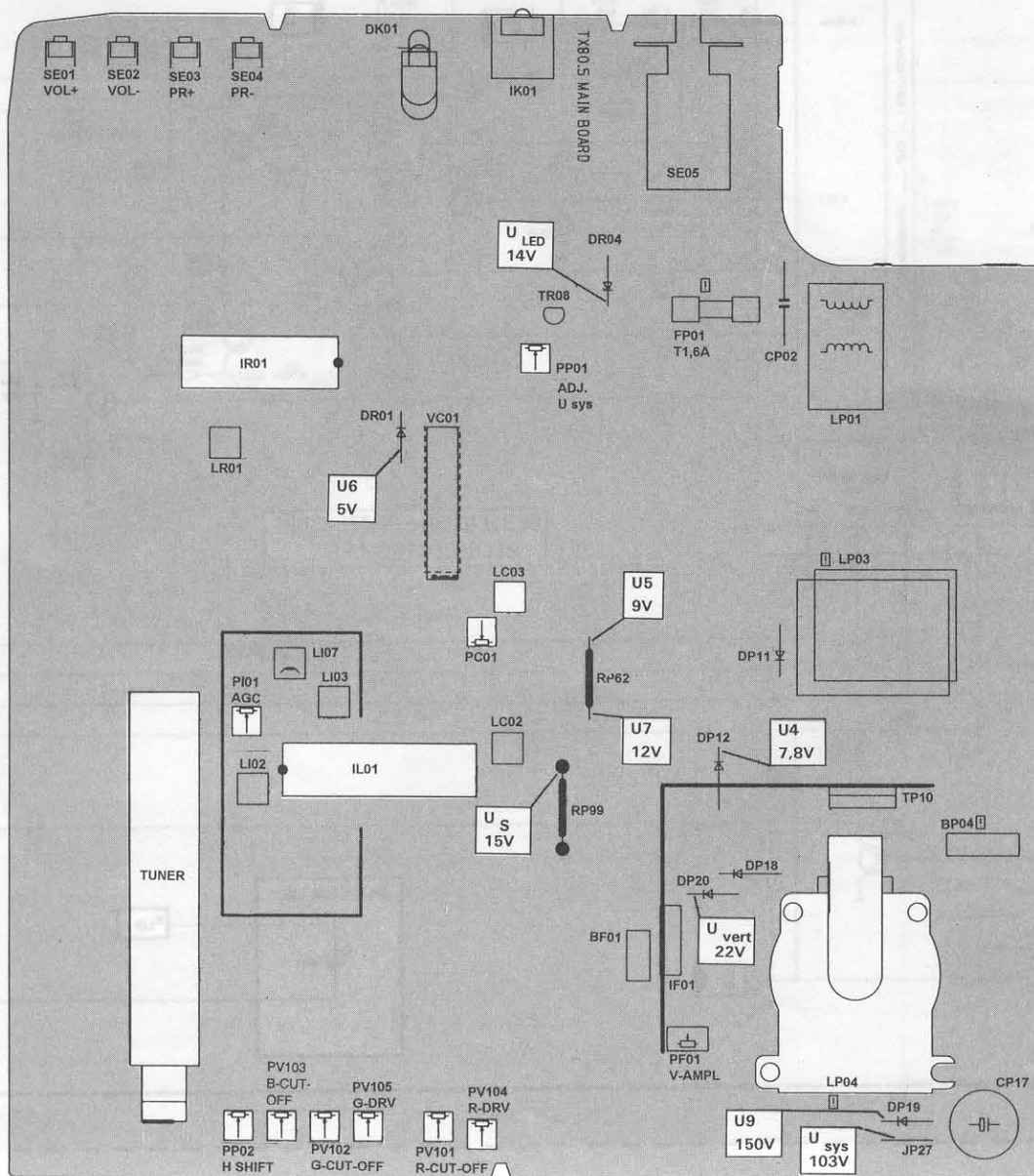
Bestell-Nr. 102.368.50

Chassis TX 805

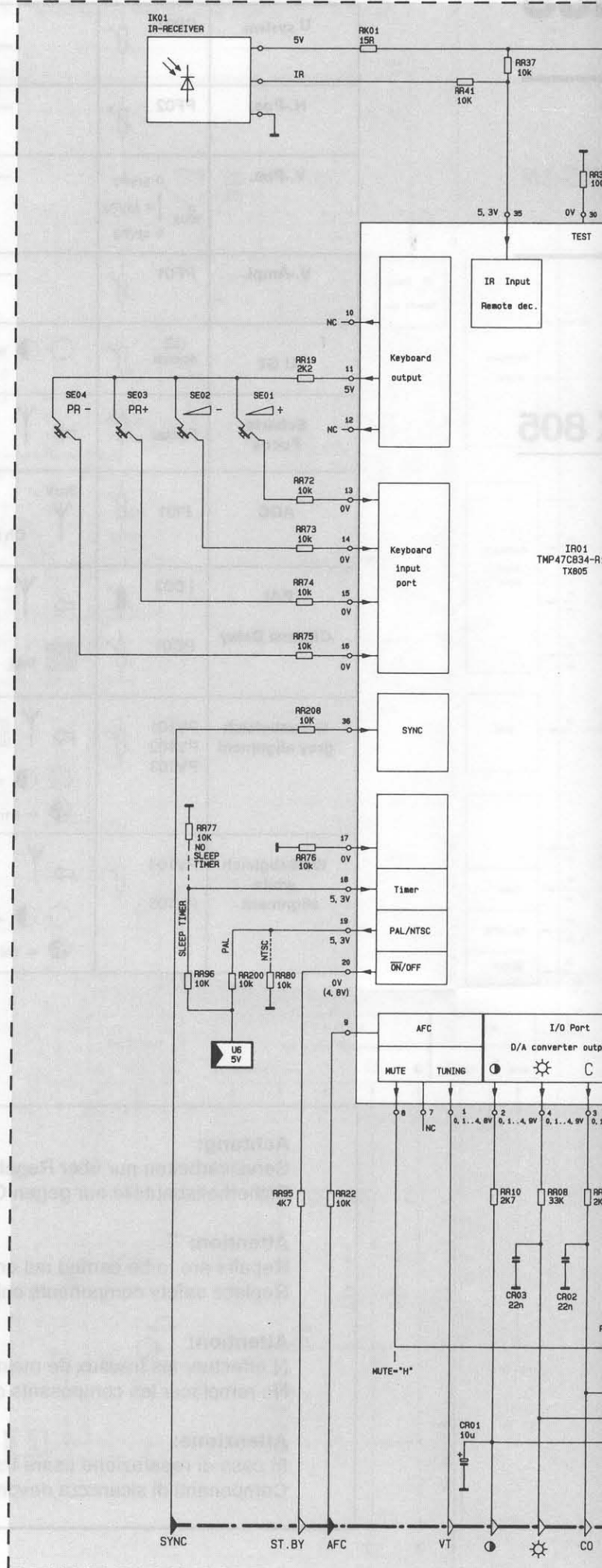
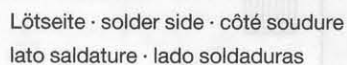
ACHTUNG! Ersatzteilbestellungen
sind schneller und kostengünstiger über

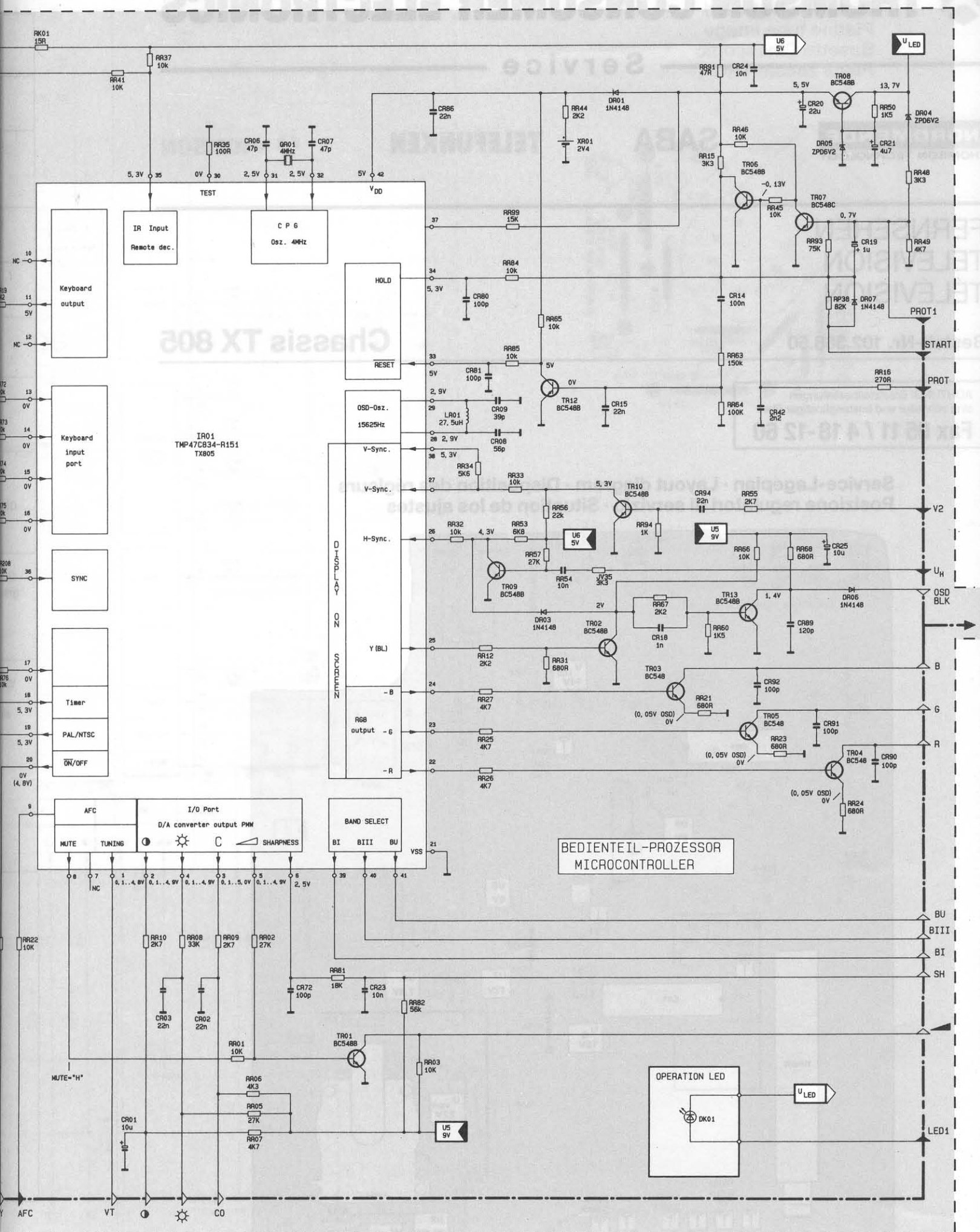
Fax 05 11 / 4 18-12 60

**Service-Lageplan · Layout diagram · Disposition des réglers
Posizione regolatori di servizio · Situation de los ajustes**



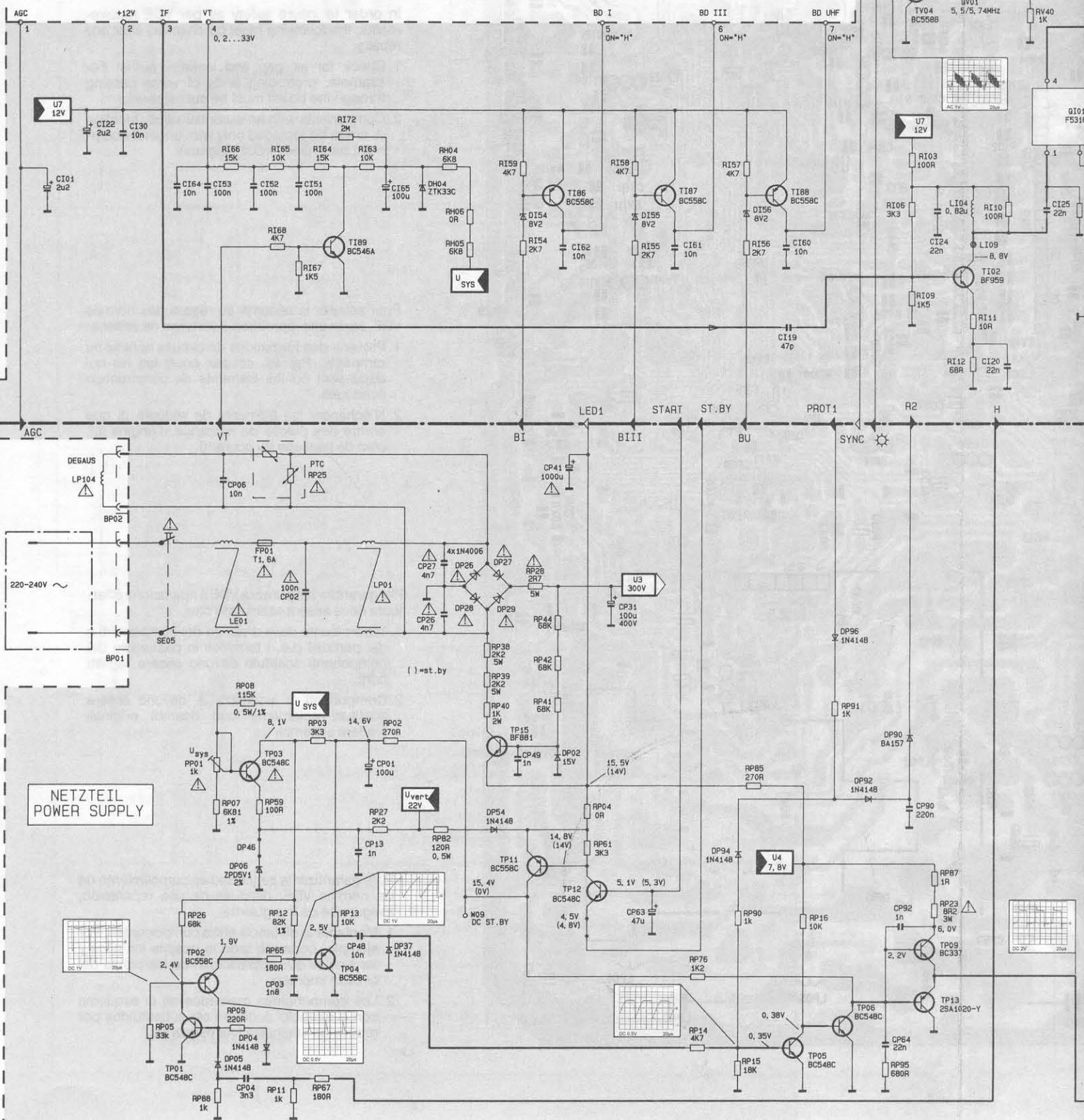
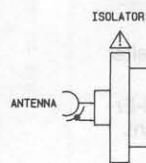
Bildröhrenplatte
Picture tube board
Platine tube image
Basetta Cinescopio
Placa zocalo TRC

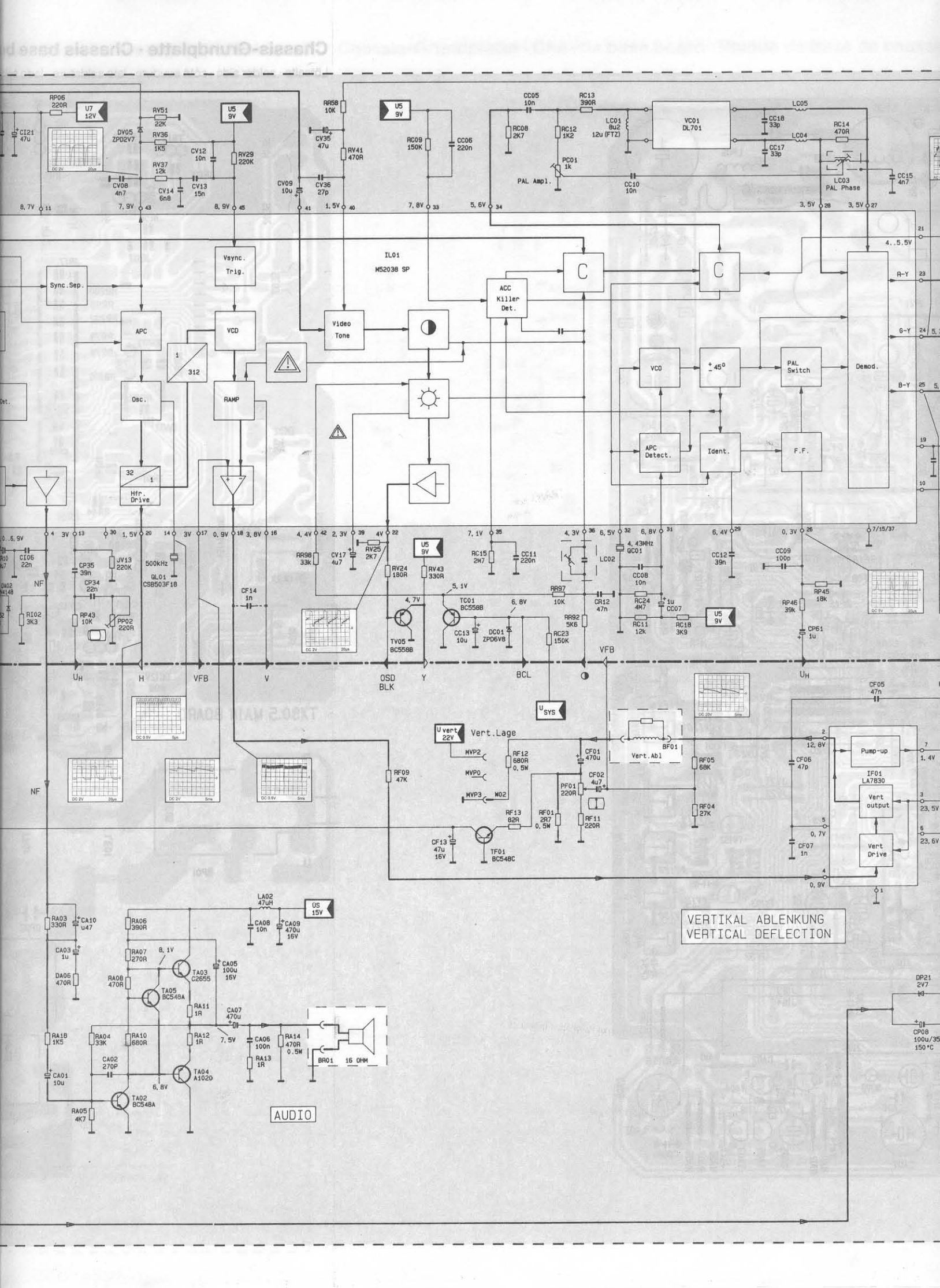


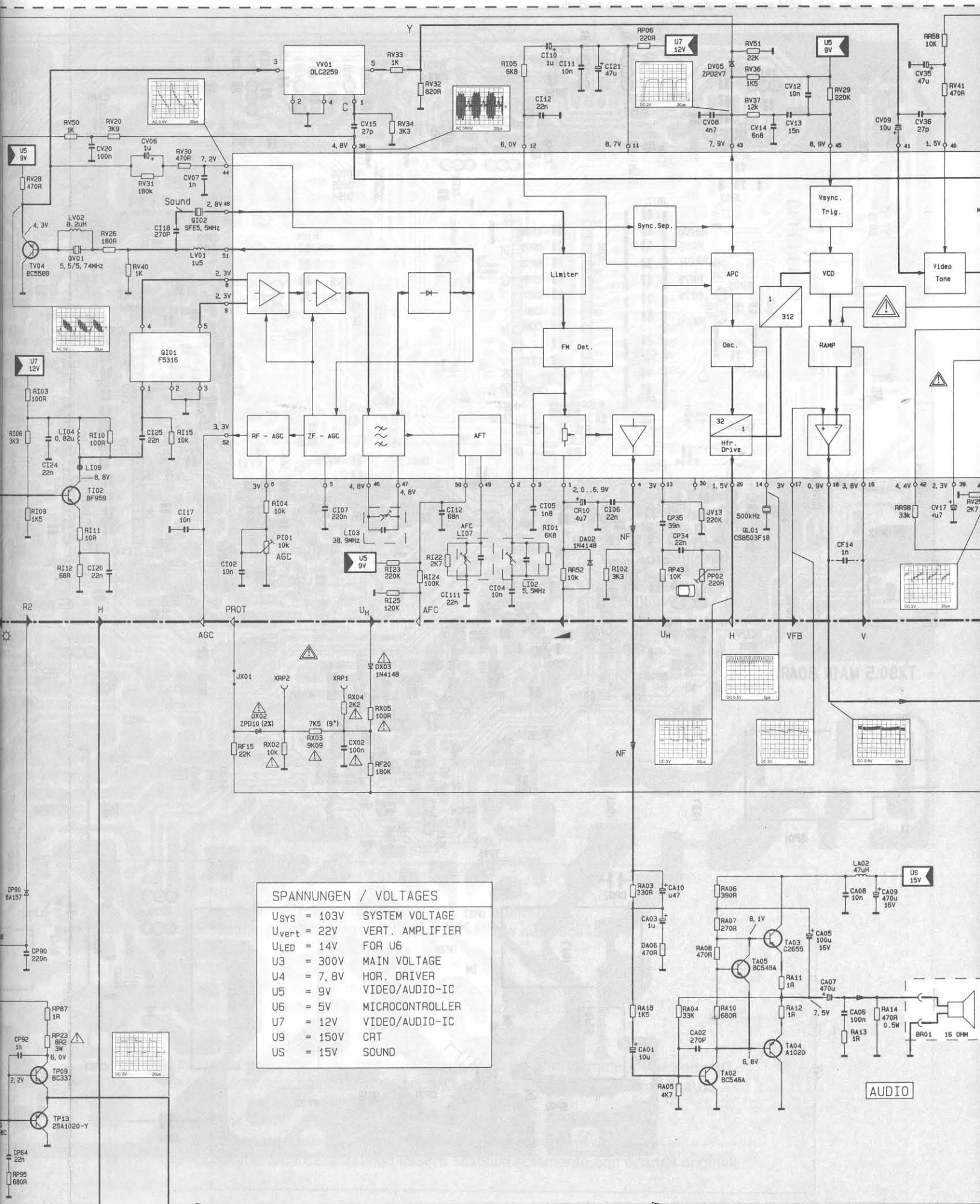


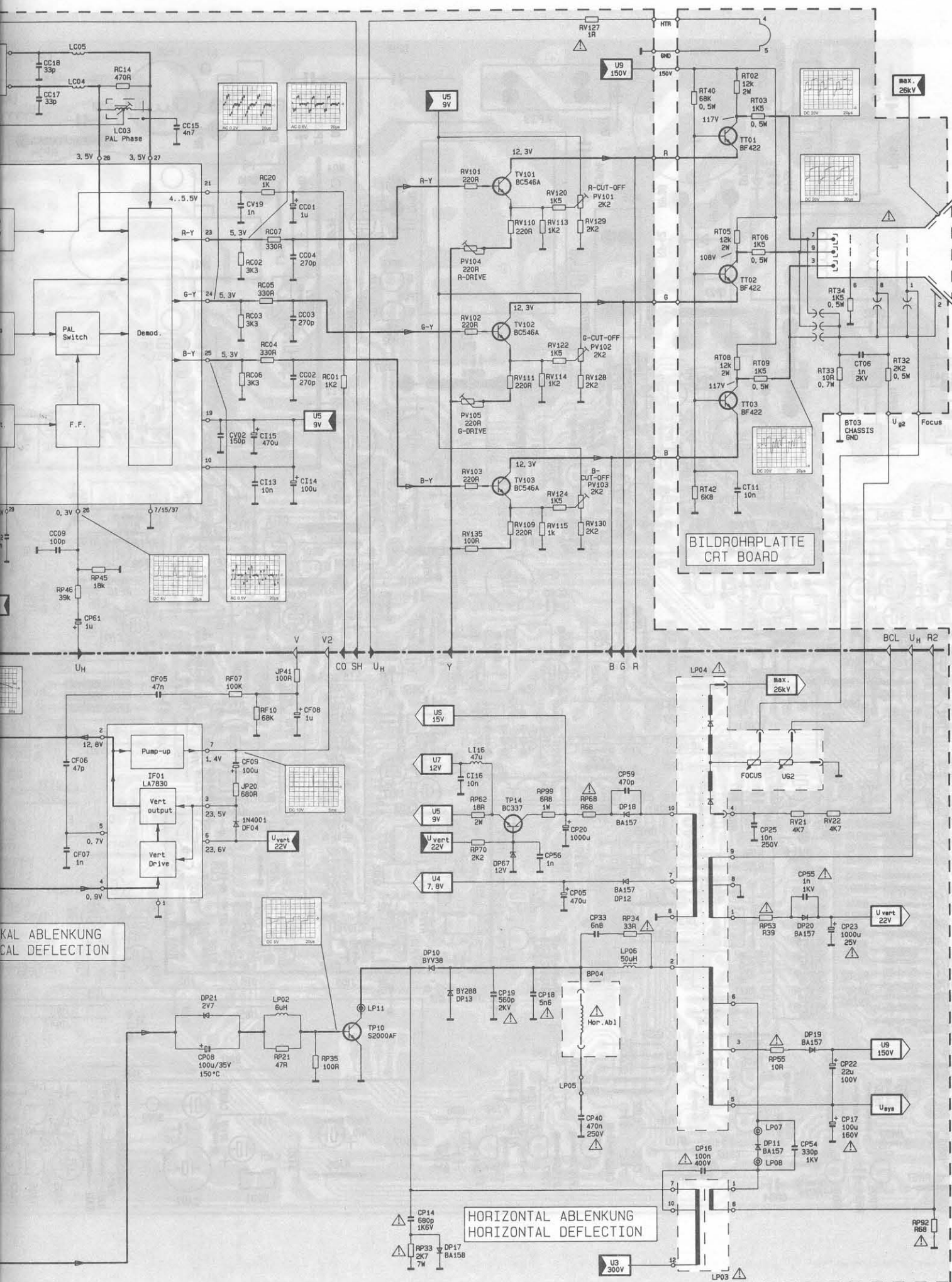
VHF/UHF TUNER

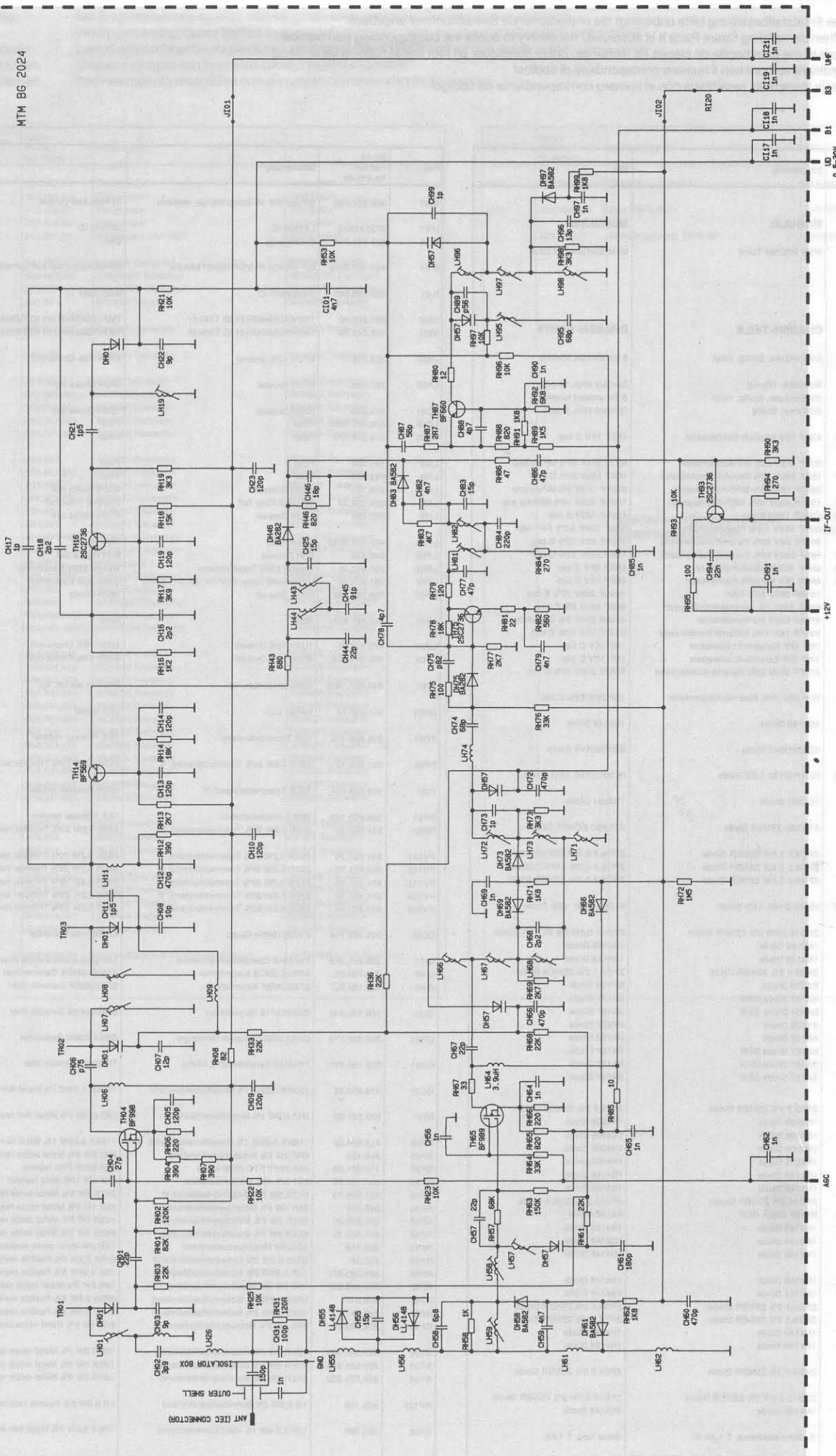
MTM BG 2024











Ersatzteilliste · Spare parts list · Liste de pièces de rechange · Lista parti di ricambio ·
Lista de piezas de recambio

Wichtig: Bei Ersatzteilbestellung bitte unbedingt die entsprechende Bestellnummer angeben!
N.B.: When demanding Spare Parts it is absolutely necessary to quote the corresponding part number!
Important: Lors d'une commande de pièces de rechange, prière d'indiquer en tout cas le numéro de la pièce!
Importante: Ordinare sempre con il numero corrispondenti di codice!
Importante: Pedir siempre lis recambios con el numero correspondiente de código!

Pos.	Art.-Nr Part No. No.articolo	Bezeichnung	Part
MTM2024	201.487.30	MODULE:	MODULES:
		MTM BG2024 Tuner	MTM BG2024 U/V tuner
		CHASSIS-TEILE	CHASSIS PARTS
BA01	404.060.81	Stiftgehäuse, 2polig, natur	2 pin contact housing
BR01	249.475	Stiftleiste, 10polig	Contact strip, 10-pole
BR02	804.085.95	Stiftgehäuse, 3polig, natur	3 pin contact housing
BR03	249.477	Stiftleiste, 2polig	Contact strip, 2-pole
CC80	490.006.8270	4N7F 1KV Keramik-Kondensator	4N7F 1KV C cap
CP02	252.320	0U1F 275V 20% MP-Kondensator	0U1F 275V 20% MPoly cap
CP06	490.008.0607	10NF 250V 20% Keramik-Kondensator	10NF 250V 20% C cap
CP14	309.430.473	680PF 1K6V 5% MPP-Kondensator	680PF 1K6V 5% MPoly cap
CP16	490.001.1194	100NF 400V 10% MKP-Kondensator	100NF 400V 10% MKPoly cap
CP17	249.481	100UF 160V Elko	100UF 160V E cap
CP18	200.996.90	5N8F 1K6V 3,5% Filmkondensator	5N8F 1K6V 3,5% Film cap
CP19	702.619.00	560PF 2KV 20% Keramik-Kondensator	560PF 2KV 20% C cap
CP25	490.008.0607	10NF 250V 20% Keramik-Kondensator	10NF 250V 20% C cap
CP26	490.006.8270	4N7F 1KV Keramik-Kondensator	4N7F 1KV C cap
CP27	490.006.8270	4N7F 1KV Keramik-Kondensator	4N7F 1KV C cap
CP31	280.909	100UF 385V 20% Elko	100UF 385V 20% E cap
CP33	239.323	6N8F 400V 5% Keramik-Kondensator	6N8F 400V 5% C cap
CP40	309.433.775	470NF 250V 5% Kondensator	470NF 250V 5% Capacitor
CP54	256.867	330PF 1KV 10% Keramik-Kondensator	330PF 1KV 10% C cap
CP54	309.442.977	1NF 1KV Keramik-Kondensator	1NF 1KV C cap
CP55	309.442.977	1NF 1KV Keramik-Kondensator	1NF 1KV C cap
CP59	246.079	470PF 500V 20% Keramik-Kondensator	470PF 500V 20% C cap
CT06	309.442.978	1NF 2KV 20% Keramik-Kondensator	1NF 2KV 20% C cap
DA02	309.325.927	1N4148 Diode	1N4148 Diode
DC01	256.417	BZX55C6V8 Diode	BZX55C6V8 Diode
DE02	490.007.5420	HLMP-D150 LED Diode	HLMP-D150 LED Diode
DF04	273TX0025	1N4001 Diode	1N4001 Diode
DH04	339.529.766	ZTK33C ZENER Diode	ZTK33C ZENER Diode
DI54	464.358	ZPD8,2 0,5W ZENER Diode	ZPD8,2 0,5W ZENER Diode
DI55	464.358	ZPD8,2 0,5W ZENER Diode	ZPD8,2 0,5W ZENER Diode
DI56	464.358	ZPD8,2 0,5W ZENER Diode	ZPD8,2 0,5W ZENER Diode
DK05	490.007.5420	HLMP-D150 LED Diode	HLMP-D150 LED Diode
DP02	252.649	ZPD15 0,5W 2% ZENER Diode	ZPD15 0,5W 2% ZENER Diode
DP04	309.325.927	1N4148 Diode	1N4148 Diode
DP05	309.325.927	1N4148 Diode	1N4148 Diode
DP06	309.327.103	ZPD5,1 2% ZENER Diode	ZPD5,1 2% ZENER Diode
DP10	309.327.131	BYV38 Diode	BYV38 Diode
DP11	309.325.056	BA157 Diode SSW	BA157 Diode
DP12	309.325.056	BA157 Diode SSW	BA157 Diode
DP13	276.169	BY228 Diode	BY228 Diode
DP17	309.325.112	BA158 Diode	BA158 Diode
DP18	309.325.056	BA157 Diode SSW	BA157 Diode
DP19	309.325.056	BA157 Diode SSW	BA157 Diode
DP20	309.325.056	BA157 Diode SSW	BA157 Diode
DP21	273TX5027	ZPY2,7 2% ZENER Diode	ZPY2,7 2% ZENER Diode
DP26	462.268	1N4006 Diode	1N4006 Diode
DP27	462.268	1N4006 Diode	1N4006 Diode
DP28	462.268	1N4006 Diode	1N4006 Diode
DP29	462.268	1N4006 Diode	1N4006 Diode
DP37	309.325.927	1N4148 Diode	1N4148 Diode
DP54	309.325.927	1N4148 Diode	1N4148 Diode
DP67	309.325.195	ZPD12 2% ZENER Diode	ZPD12 2% ZENER Diode
DP90	309.325.056	BA157 Diode SSW	BA157 Diode
DP92	309.325.927	1N4148 Diode	1N4148 Diode
DP94	309.325.927	1N4148 Diode	1N4148 Diode
DP96	309.325.927	1N4148 Diode	1N4148 Diode
DR01	309.325.927	1N4148 Diode	1N4148 Diode
DR03	309.325.927	1N4148 Diode	1N4148 Diode
DR04	276.375	ZPD6,2 2% ZENER Diode	ZPD6,2 2% ZENER Diode
DR05	276.375	ZPD6,2 2% ZENER Diode	ZPD6,2 2% ZENER Diode
DR06	309.325.927	1N4148 Diode	1N4148 Diode
DR07	309.325.927	1N4148 Diode	1N4148 Diode
DV05	273TX5032	ZPD4,7 5% ZENER Diode	ZPD4,7 5% ZENER Diode
DX02	249.528	ZPD10 0,5W 2% ZENER Diode	ZPD10 0,5W 2% ZENER Diode
DX03	309.325.927	1N4148 Diode	1N4148 Diode
FP01	309.625.610	G.-Schmelzeinsatz, T 1,6A III	Glass fuse, T 1,6A

Pos.	Art.-Nr Part No. No.articolo	Bezeichnung	Part
IE01	309.327.160	GP1U73RF IR-Vorverstärker, stehend	IR PRE-AMPLIFIER
IF01	276TX3655	LA7830 IC	LA7830 IC
IF01	339.872.711	Montageclip	Clip
IK01	490.007.8242	GP1U73QF IR-VORVERSTÄRKER	INFRA-RED PRE-AMPLIFIER
IL01	309.368.543	M52038SP IC	M52038SP IC
IR01	201.683.40	TMP47C834NR151 IC TX8051	TMP47C834NR151 IC TX8051
IR01	202.041.10	TMP47C834NR161 IC TX8052	TMP47C834NR161 IC TX8052
JR27	266.702	47UH 10% Drossel	47UH 10% Choke coil
LA02	267.256	47UH Drossel	47UH Choke coil
LC01	249.220	12UH Drossel	12UH Choke coil
LC02	490.007.1465	Filter	Filter
LC03	309.249.379	Filter	Filter
LI02	249.494	Filter	Filter
LI03	249.495	Filter	Filter
LI04	276.184	0U8H Drossel	0U8H Choke coil
LI07	904.059.33	38M9HZ Filter 7x7	38M9HZ Filter 7x7
LI16	267.256	47UH Drossel	47UH Choke coil
LP01	490.008.0542	Siebdrössel	Filter choke
LP02	249.496	6UH Drossel	6UH Choke coil
LP03	201.495.40	Wessel 220V Transformator	Wessel 220V transformer
LP04	201.679.40	Diodensplit-Trafo, FCV-1410E12 (TX805)	Diode split transformer
LP06	309.250.964	50UH Drossel	50UH Choke
LR01	490.007.8251	Filter	Filter
LV01	470.543.75	1U5H 10% Drossel	1U5H 10% Choke coil
LV02	309.249.345	8U2H 10% Drossel	8U2H 10% Choke coil
MI01	490.007.1452	Antennenbuchse, kpl.	Antenna socket, cpl.
MK01	201.258.7A	Halter, LED	LED holder
PC01	309.509.162	1KR Trimmwiderstand	1KR Trimmer resistor
PF01	201.860.40	220R 0,2W 20% Trimmwiderstand, V	220R 0,2W 20% Trimmer resistor
PI01	309.509.164	10KR Trimmwiderstand, H	10KR Trimmer resistor
PP01	309.509.162	1KR Trimmwiderstand	1KR Trimmer resistor
PP02	201.860.40	220R 0,2W 20% Trimmwiderstand, V	220R 0,2W 20% Trimmer resistor
PV101	201.701.70	2K2R 0,2W 20% Trimmwiderstand, V	2K2R 0,2W 20% Trimmer resistor
PV102	201.701.70	2K2R 0,2W 20% Trimmwiderstand, V	2K2R 0,2W 20% Trimmer resistor
PV103	201.701.70	2K2R 0,2W 20% Trimmwiderstand, V	2K2R 0,2W 20% Trimmer resistor
PV104	201.860.40	220R 0,2W 20% Trimmwiderstand, V	220R 0,2W 20% Trimmer resistor
PV105	201.860.40	220R 0,2W 20% Trimmwiderstand, V	220R 0,2W 20% Trimmer resistor
QC01	309.335.714	4,433619MHz Quarz	4,433619MHz Crystal
QI01	309.229.932	TSF5316 Oberflächenwellenfilter	TSF5316 Surface wave filter
QI02	200.730.50	SFSH5,5MCB Keramikfilter	SFSH5,5MCB Ceramic filter
QI02	309.160.807	SFE5,5MBF Keramikfilter	SFE5,5MBF Ceramic filter
QL01	309.160.850	CSB503F18 Keramikfilter	CSB503F18 Ceramic filter
QR01	309.335.710	CSA4.00MG Keramik-Schwinger	CSA4.00MG Resonator
QV01	309.160.851	TPW04B Keramikfilter 5,74Mhz	TPW04B Ceramic filter
RC23	413.832.02	150KR 0,25W 1% Metallfilmwiderstand	150KR 0,25W 1% Metal film resistor
RF01	603.287.00	2R7 0,5W 1% Metallfilmwiderstand	2R7 0,5W 1% Metal film resistor
RP08	413.804.02	115KR 0,25W 1% Metallfilmwiderstand	115KR 0,25W 1% Metal film resistor
RP23	243.453	8R2 3W 5% Metalloxyd-widerstand	8R2 3W 5% Metal oxide resistor
RP25	110.851.00	22R 220V PTC-Widerstand	22R 220V PTC resistor
RP28	201.108.70	2R7 5W 10% Drahtwiderstand	2R7 5W 10% Wire resistor
RP33	201.686.70	2K7R 5W 5% Metalloxyd-widerstand	2K7R 5W 5% Metal oxide resistor
RP34	249.515	33R 1W 5% Metalloxyd-widerstand	33R 1W 5% Metal oxide resistor
RP38	201.853.20	2K2R 3W 5% Metalloxyd-widerstand	2K2R 3W 5% Metal oxide resistor
RP39	201.853.20	2K2R 3W 5% Metalloxyd-widerstand	2K2R 3W 5% Metal oxide resistor
RP40	249.318	1KR 2W Metalloxyd-widerstand	1KR 2W Metal oxide resistor
RP53	256.861	0R39 0,5W 5% Sicherheitswiderstand	0R39 0,5W 5% Fusible resistor
RP55	309.580.977	10R 0,35W 5% Sicherheitswiderstand	10R 0,35W 5% Fusible resistor
RP62	309.556.312	18R 2W 5% Metalloxyd-widerstand	18R 2W 5% Metal oxide resistor
RP68	246.011	0R68 0,3W 5% Sicherheitswiderstand	0R68 0,3W 5% Fusible resistor
RP92	249.517	0R68 0,5W 5% Sicherheitswiderstand	0R68 0,5W 5% Fusible resistor
RP99	804.093.38	6R8 1W 5% Metalloxyd-widerstand	6R8 1W 5% Metal oxide resistor
RT02	309.531.930	12KR 2W 5% Metalloxyd-widerstand	12KR 2W 5% Metal oxide resistor
RT05	309.531.930	12KR 2W 5% Metalloxyd-widerstand	12KR 2W 5% Metal oxide resistor
RT08	309.531.930	12KR 2W 5% Metalloxyd-widerstand	12KR 2W 5% Metal oxide resistor
RV127	409.169	1R 0,5W 5% Sicherheitswiderstand	1R 0,5W 5% Fusible resistor
RX02	266.596	10KR 0,4W 1% Metallfilmwiderstand	10KR 0,4W 1% Metal film resistor

Ersatzteilliste · Spare parts list · Liste de pièces de rechange · Lista parti di ricambio ·
Lista de piezas de recambio

Wichtig: Bei Ersatzteilbestellung bitte unbedingt die entsprechende Bestellnummer angeben!
N.B.: When demanding Spare Parts it is absolutely necessary to quote the corresponding part number!
Important: Lors d'une commande de pièces de rechange, prière d'indiquer en tout cas le numéro de la pièce!
Importante: Ordinare sempre con il numero corrispondenti di codice!
Importante: Pedir siempre lis recambios con el numero correspondiente de codigo!

Pos.	Art.-Nr Part No. No.articolo	Bezeichnung	Part
SE01	105.106.00	Taktschalter	Tact switch
SE02	105.106.00	Taktschalter	Tact switch
SE03	105.106.00	Taktschalter	Tact switch
SE04	105.106.00	Taktschalter	Tact switch
SE05	201.260.10	Netzschalter, 4A 250V	Mains switch
TA02	261.791	BC548A Transistor	BC548A Transistor
TA03	339.556.399	2SC2655Y Transistor	2SC2655Y Transistor
TA04	242.866	2SA1020Y Transistor	2SA1020Y Transistor
TA05	261.791	BC548A Transistor	BC548A Transistor
TC01	309.001.329	BC558A Transistor	BC558A Transistor
TF01	463.223	BC548C Transistor	BC548C Transistor
TI02	270TX1697	BF959 Transistor	BF959 Transistor
TI86	309.001.226	BC558B Transistor	BC558B Transistor
TI87	309.001.226	BC558B Transistor	BC558B Transistor
TI88	309.001.226	BC558B Transistor	BC558B Transistor
TI89	309.001.347	BC546A Transistor	BC546A Transistor
TP01	463.223	BC548C Transistor	BC548C Transistor
TP02	309.001.292	BC558C Transistor	BC558C Transistor
TP03	463.223	BC548C Transistor	BC548C Transistor
TP04	309.001.292	BC558C Transistor	BC558C Transistor
TP05	463.223	BC548C Transistor	BC548C Transistor
TP06	463.223	BC548C Transistor	BC548C Transistor
TP09	352.839.7000	BC337-16 Transistor	BC337-16 Transistor
TP10	256.341	S2000AF Transistor	S2000AF Transistor
TP10	261.825	Montageclip 1	Clip 1
TP11	309.001.292	BC558C Transistor	BC558C Transistor
TP12	463.223	BC548C Transistor	BC548C Transistor
TP13	242.866	2SA1020Y Transistor	2SA1020Y Transistor
TP14	352.839.7000	BC337-16 Transistor	BC337-16 Transistor
TP15	490.007.4147	MJF18004 Transistor	MJF18004 Transistor
TR01	309.001.293	BC548B Transistor	BC548B Transistor
TR02	309.001.293	BC548B Transistor	BC548B Transistor
TR03	309.001.293	BC548B Transistor	BC548B Transistor
TR04	309.001.293	BC548B Transistor	BC548B Transistor
TR05	309.001.293	BC548B Transistor	BC548B Transistor
TR06	309.001.293	BC548B Transistor	BC548B Transistor
TR07	463.223	BC548C Transistor	BC548C Transistor
TR08	309.001.293	BC548B Transistor	BC548B Transistor
TR09	309.001.293	BC548B Transistor	BC548B Transistor
TR10	309.001.293	BC548B Transistor	BC548B Transistor
TR12	309.001.293	BC548B Transistor	BC548B Transistor
TR13	309.001.293	BC548B Transistor	BC548B Transistor
TT01	465.913	BF422 Transistor	BF422 Transistor
TT02	465.913	BF422 Transistor	BF422 Transistor
TT03	465.913	BF422 Transistor	BF422 Transistor
TV04	309.001.226	BC558B Transistor	BC558B Transistor
TV05	309.001.226	BC558B Transistor	BC558B Transistor
TV101	309.001.347	BC546A Transistor	BC546A Transistor
TV102	309.001.347	BC546A Transistor	BC546A Transistor
TV103	309.001.347	BC546A Transistor	BC546A Transistor
VC01	309.699.463	DL701S/SDL145 Verzögerungsleitung	DL701S/SDL145 Delay line

Pos.	Art.-Nr Part No. No.articolo	Bezeichnung	Part
VV01	200.338.10	DLC2259 LC-Modul	DLC2259 LC Module
XR01	309.333.013	2U4 60MY Akku	2U4 60MY Battery
-	201.746.20	Bildrohrfassung, TX90 10"	Cathode ray tube socket
Weitere gerätespezifische Ersatzteile lieferbar.			Further spare parts are available.