

SERVICE MANUAL

COLOR TELEVISION

This Service Manual contains information about the difference between TV-AN2010 (TYPE:NH).

If requiring the other information, see Service Manual of the TV-AN2010 (TYPE:NH)
(S/M Code No. 09-003-340-3R1).

ALTERATION LIST 1/1

MECHANICAL MAIN PARTS LIST 1/1

REF. NO	PART NO.	KANRI NO.	DESCRIPTION
10	87-JB9-602-010		CRT,A48AGY13X67 N

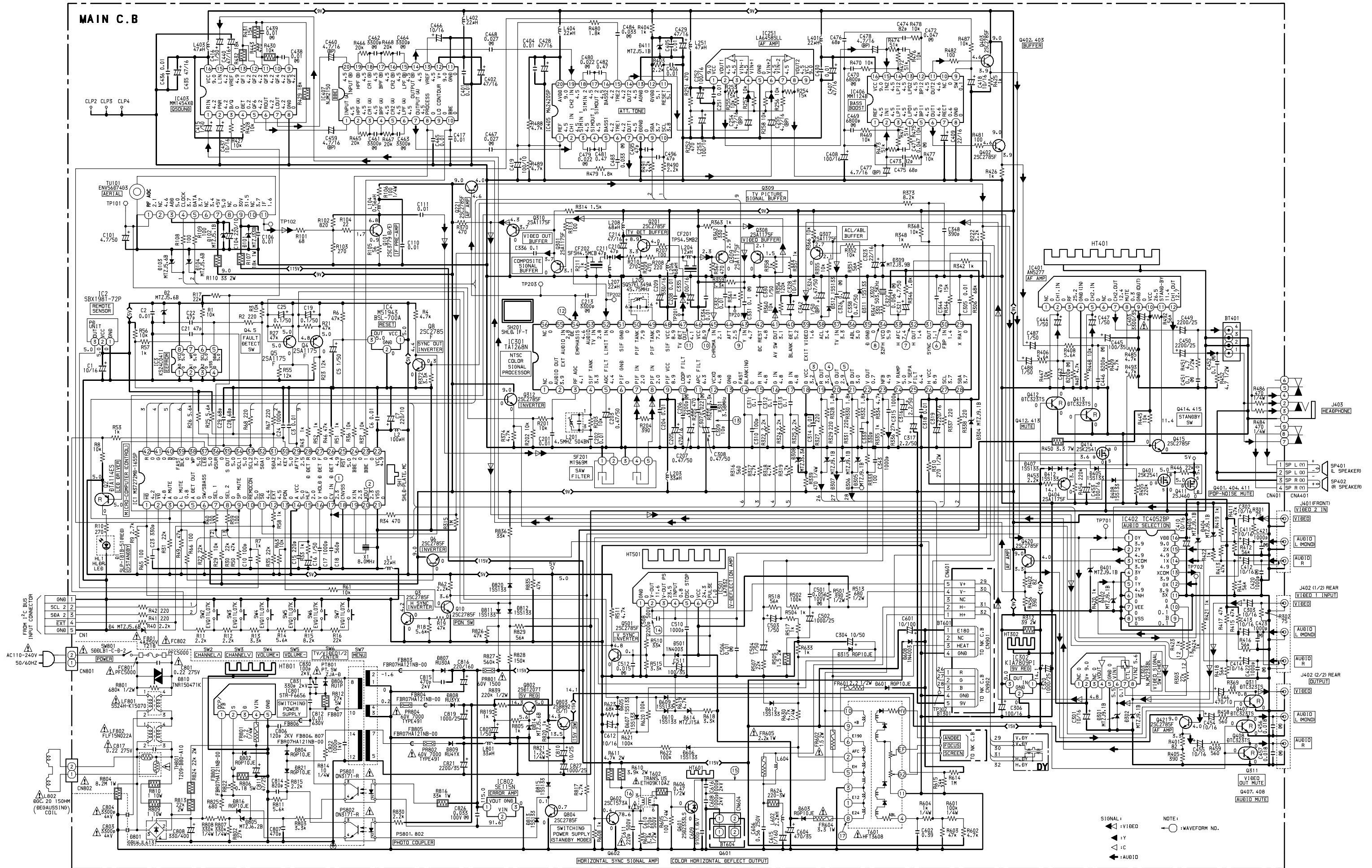
ELECTRICAL MAIN PARTS LIST 1/1

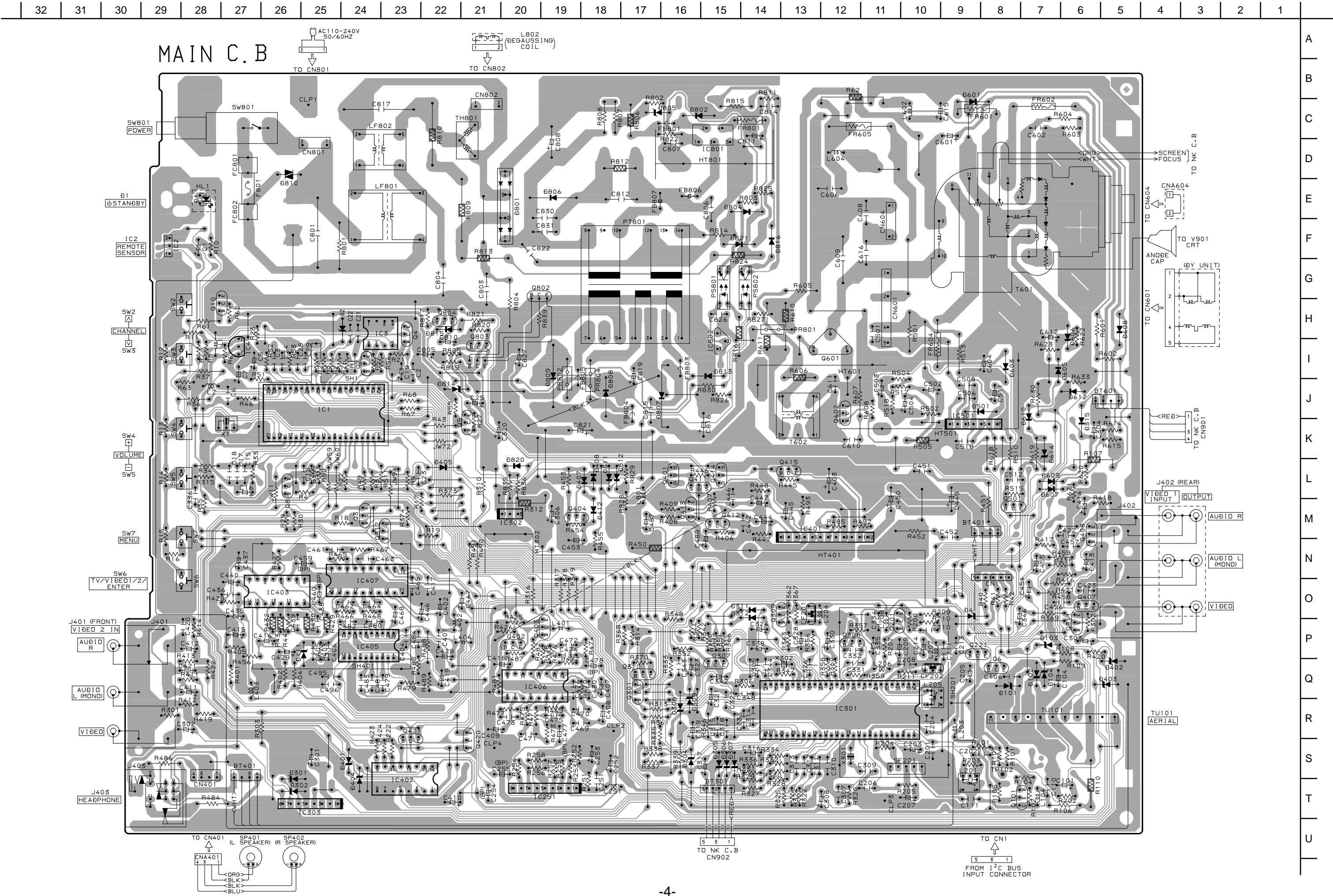
REF. NO	PART NO.	KANRI NO.	DESCRIPTION
C609	87-A11-736-090		CAP,M/P 9100P-1.6K H ECWH (VB)
△FR602	87-A00-056-060		RES,FUSE 1.5-2W J R-TYPE
S901	86-LBR-670-010		SOCKET,CRT 9P HPS1521

ADDITIONAL LIST 1/1

ELECTRICAL MAIN PARTS LIST 1/1

REF. NO	PART NO.	KANRI NO.	DESCRIPTION
△FR605	87-A00-275-090		RES,FUSE 2.2K-1W J R-TYPE
L604	8Z-JAK-601-010		COIL,ELC10D680E







アイワ株式会社 〒110-8710 東京都台東区池之端1-2-11 ☎03(3827)3111 (代表)
AIWA CO.,LTD. 2-11, IKENOHATA 1-CHOME, TAITO-KU, TOKYO 110-8710, JAPAN TEL:03 (3827) 3111