

# SERVICE MANUAL

---

COLOR TELEVISION

---

- This Service Manual contains information about the difference between TV-CN140(NH1AL) and TV-CN140(NH). If requiring other information, see Service Manual of TV-CN140(NH), (S/M Code No. 09-99A-418-7R1).

## SPECIFICATIONS

<b>Tuner System</b>	Frequency synthesized tuner	<b>Operating Voltage</b>	120 V AC, 60 Hz
<b>TV System</b>	NTSC-M	<b>Power Consumption</b>	65 W
<b>Channel Coverage</b>	VHF: 2 to 13 UHF: 14 to 69 CATV: 5A, A-1 to A-5, A to W, W+1 to W+84	<b>Earphone Jack</b>	Monaural-mini jack
		<b>Operating Temperature</b>	5 °C – 40 ° C
		<b>Operating Humidity</b>	35 % – 80 %
<b>Program Memory</b>	181	<b>Dimensions</b>	378 (W) X 320 (H) X 363.5 (D) mm (15 x 12 <sup>5</sup> / <sub>8</sub> x 14 <sup>3</sup> / <sub>8</sub> in.)
<b>Antenna Input</b>	75 ohms, unbalanced	<b>Weight</b>	9.5kg (20.9 lbs.)
<b>Picture Tube</b>	13"		
<b>Screen Size</b>	208 (W) X 211 (H) mm (11 <sup>1</sup> / <sub>8</sub> x 8 <sup>3</sup> / <sub>8</sub> in.) 335 mm (diagonal) (13 <sup>1</sup> / <sub>4</sub> in.)		
<b>Video Input</b>	1 Vp-p 75 ohms		
<b>Audio Input</b>	0.5 Vrms., 33 kohms more		
<b>Speaker</b>	76 mm (3 in.) round		

• Design and specifications are subject to change without notice.

## ACCESSORIES / PACKAGE LIST

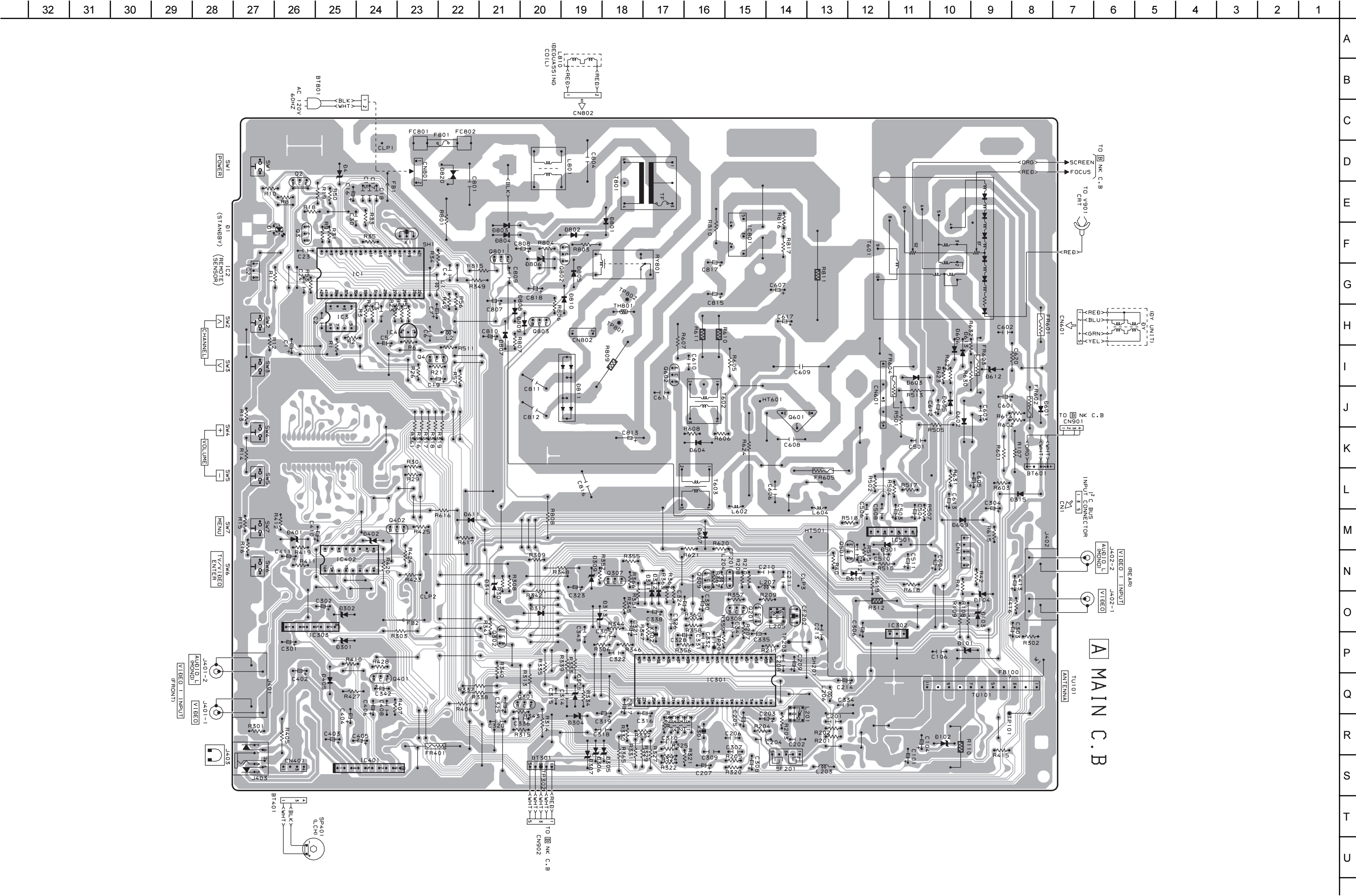
REF. NO.	PART NO.	KANRI NO.	DESCRIPTION
1	8Z-JBJ-904-210	IB,NH (E/S) CN140 -D	
2	8Z-JBJ-953-010	RC UNIT,RC-ZVT10	
3	87-A90-702-010	ANT ASSY,TV 5 SEC (NTSC)	

# ELECTRICAL MAIN PARTS LIST

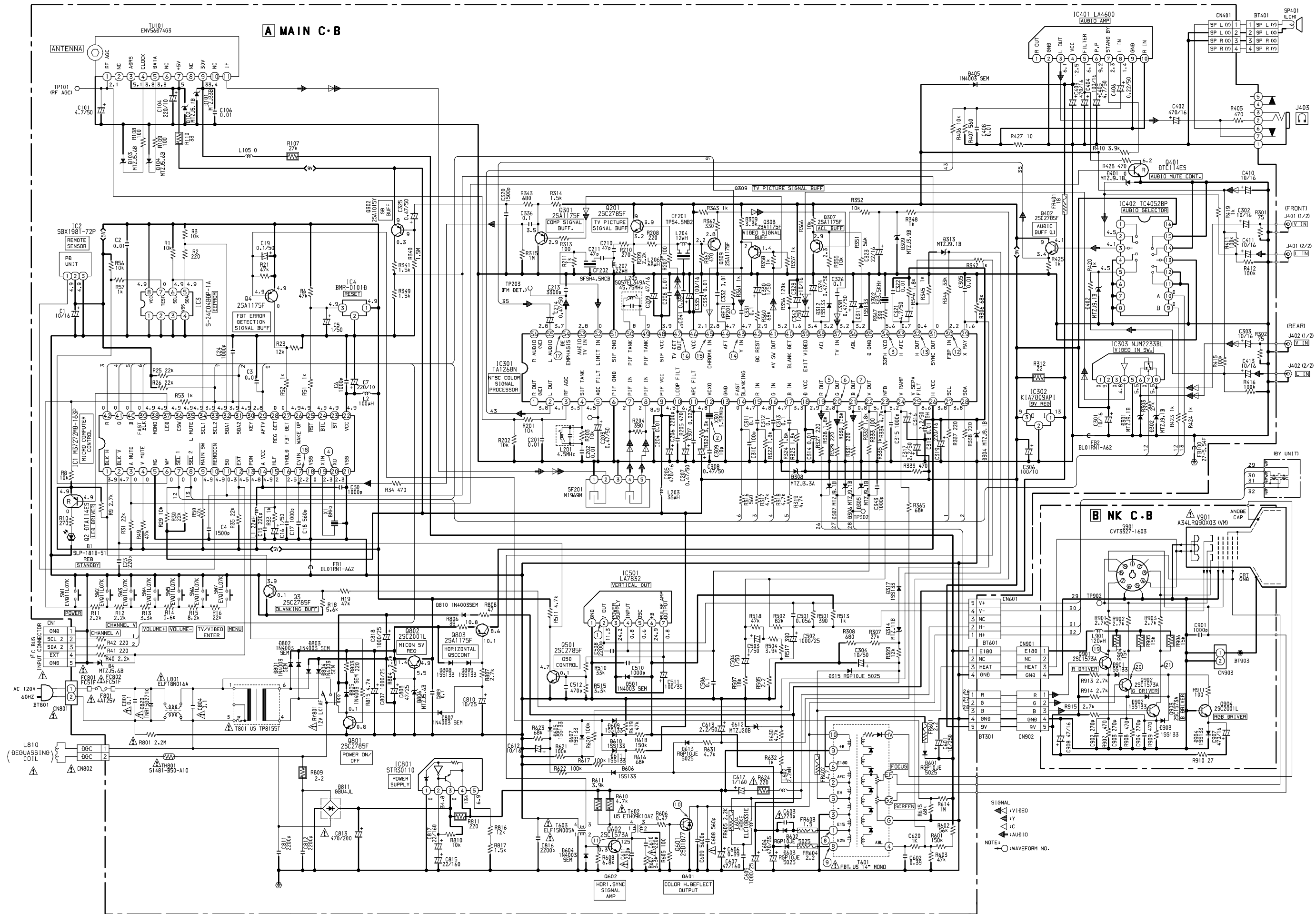
REF. NO.	PART NO.	KANRI NO.	DESCRIPTION	REF. NO.	PART NO.	KANRI NO.	DESCRIPTION
IC				C211	87-018-115-080		CAP, CER 47P-50V
	8Z-JBH-622-010		IC,M37272M8-183SP	C213	87-A10-326-080		CAP,M 3300P-50 K
	87-A91-538-010		RCR UNIT,SBX1981-72P	C214	87-A12-086-080		CAP,E 0.47-50 SMG
	87-A21-378-010		IC,S24C04BDP-1A	C301	87-010-378-080		CAP,E 10-16 M SME
	87-A21-133-080		IC,BMR-0101D	C302	87-010-378-080		CAP,E 10-16 M SME
	8Z-JBJ-605-010		IC,TA1268N	C303	87-010-378-080		CAP,E 10-16 M SME
	87-A21-788-010		IC,KIA7809API	C304	87-A12-091-080		CAP,E 10-50 SMG
	87-002-421-010		IC,NJM2233BL	C305	87-018-134-080		CAPACITOR,TC-U 0.01-16
	87-A21-090-010		IC,LA4600	C306	87-A12-086-080		CAP,E 100-10 SMG
	87-027-666-010		IC,TC4052BP	C307	87-A10-299-080		CAP,M 0.022-50 J
	87-070-237-010		IC,LA7832	C308	87-A12-086-080		CAP,E 0.47-50 SMG
	87-A21-290-010		IC,STR30110	C309	87-018-147-080		CAP,TC-U 10P-50 CH
TRANSISTOR				C310	87-018-119-080		CAP, CER 100P-50V
	87-026-269-080		TR,DTA114ES	C311	87-A11-148-080		CAP, TCU 0.1-50 ZF
	89-327-854-080		TR,2SC2785F	C312	87-A11-148-080		CAP, TCU 0.1-50 ZF
	89-111-755-080		TR,2SA1175F	C313	87-A11-148-080		CAP, TCU 0.1-50 ZF
	89-110-154-080		TR,2SA1015Y	C314	87-018-134-080		CAPACITOR,TC-U 0.01-16
	87-026-245-080		TR,DTC114ES	C315	87-018-131-080		CAP, CER 1000P-50V
	89-418-771-060		TR,2SD1877	C316	87-A10-378-080		CAP,E 2.2-50 K SH
	87-A30-176-010		TR,2SC1573A P/Q/R	C317	87-A12-088-080		CAP,E 2.2-50 SMG
	89-320-012-080		TR,2SC2001L	C318	87-018-134-080		CAPACITOR,TC-U 0.01-16
DIODE				C319	87-016-251-080		CAP,E 220-16 SMG
	87-017-931-080		ZENER,MTZJ5.6B	C320	87-018-196-080		CAP, CER 1500P-16V
	87-002-743-080		ZENER,MTZJ 33B	C321	87-A12-090-080		CAP,E 4.7-50 SMG
	87-070-136-080		ZENER,MTZJ5.1B	C323	87-010-379-080		CAP,E 22-16 SME
	87-A40-523-080		ZENER,MTZJ9.1B	C324	87-A12-086-080		CAP,E 0.47-50 SMG
	87-A40-348-080		ZENER,MTZJ3.3A	C325	87-A12-086-080		CAP,E 0.47-50 SMG
	87-A40-611-080		ZENER,MTZJ3.9B	C328	87-010-033-080		CAP,E 10-16 M BK
	87-020-465-080		DIODE,1SS133 (110MA)	C330	87-A12-087-080		CAP,E 1-50 SMG
	87-A40-520-080		ZENER,MTZJ11B	C332	87-018-134-080		CAPACITOR,TC-U 0.01-16
	87-A40-286-080		DIODE,RGP10JE-5025	C334	87-018-134-080		CAPACITOR,TC-U 0.01-16
	87-070-274-080		DIODE,1N4003 SEM	C335	87-A10-918-080		CAP,E 100-16 SMG
	87-A40-444-080		ZENER,MTZJ20B	C336	87-A11-148-080		CAP,TCU 0.1-50 ZF
	87-A40-328-010		DIODE,GBU4JL	C338	87-A12-086-080		CAP,E 0.47-50 SMG
MAIN C.B				C342	87-A12-087-080		CAP,E 1-50 SMG
BT301	87-JBC-625-010		CONN ASSY,5P V WHT TV-NK	C343	87-018-131-080		CAP, CER 1000P-50V
BT401	8Z-JBJ-606-010		CONN ASSY,2P V W SPMONO	C402	87-A12-068-080		CAP,E 470-16 SMG
BT601	87-JBG-626-010		CONN ASSY,4P V WHT TV-NK	C403	87-A12-068-080		CAP,E 470-16 SMG
C1	87-010-033-080		CAP,E 10-16 M BK	C404	87-A10-918-080		CAP,E 100-16 SMG
C2	87-018-134-080		CAPACITOR,TC-U 0.01-16	C405	87-A12-090-080		CAP,E 4.7-50 SMG
C3	87-018-134-080		CAPACITOR,TC-U 0.01-16	C406	87-A12-084-080		CAP,E 0.22-50 SMG
C4	87-018-196-080		CAP, CER 1500P-16V	C410	87-010-378-080		CAP,E 10-16 M SME
C5	87-A12-087-080		CAP,E 1-50 SMG	C411	87-010-378-080		CAP,E 10-16 M SME
C7	87-A12-063-080		CAP,E 220-10 SMG	C413	87-010-378-080		CAP,E 10-16 M SME
C15	87-018-123-080		CAP, CER 220P-50V	C501	87-A12-373-080		CAP,M 0.056-100 J CP
C16	87-A12-087-080		CAP,E 1-50 SMG	C502	87-A10-831-080		CAP,E 1000-25 M SMG
C17	87-018-131-080		CAP, CER 1000P-50V	C503	87-A12-087-080		CAP,E 1-50 SMG
C18	87-018-128-080		CAP, CERA-SOL SS 560P	C504	87-A12-087-080		CAP,E 1-50 SMG
C19	87-A12-083-080		CAP,E 0.1-50 SMG	C508	87-A10-469-080		CAP,CER 2200P-500 K B DD10
C23	87-018-123-080		CAP, CER 220P-50V	C510	87-018-131-080		CAP, CER 1000P-50V
C24	87-018-131-080		CAP, CER 1000P-50V	C511	87-A12-079-080		CAP,E 100-35 SMG
C101	87-A12-090-080		CAP,E 4.7-50 SMG	C512	87-018-127-080		CAP, CER 470P-50V
C104	87-A12-063-080		CAP,E 220-10 SMG	C601	87-016-373-080		CAP,E 10-250 M SME
C201	87-018-134-080		CAPACITOR,TC-U 0.01-16	C603	87-010-974-080		CAP,CER 220P-500 B
C202	87-018-134-080		CAPACITOR,TC-U 0.01-16	C604	87-010-396-080		CAP,E 470-35 SME
C203	87-A12-086-080		CAP,E 0.47-50 SMG	C605	87-A10-831-090		CAP,E 1000-25 SMG
C204	87-018-134-080		CAPACITOR,TC-U 0.01-16	C606	8Z-JBH-625-010		CAP,M/P 0.39-250 J A TYPE
C205	87-A12-068-080		CAP,E 470-16 SMG	C607	87-A11-320-090		CAP,E 47-160 M 105 YXA
C206	87-A10-287-080		CAP,M 2200P-50 J	C608	87-012-397-010		CAP,CER 1000P-2K K BN DE
C207	87-A12-086-080		CAP,E 0.47-50 SMG	C609	87-A11-169-010		CAP,M/P 5600P-1.6K J DKR
C208	87-018-134-080		CAPACITOR,TC-U 0.01-16	C610	87-010-974-080		CAP,CER 220P-500 B
C209	87-A12-066-080		CAP,E 47-16 SMG	C611	87-010-974-080		CAP,CER 220P-500 B
C210	87-018-115-080		CAP, CER 47P-50V	C612	87-010-378-080		CAP,E 10-16 M SME
				C613	87-A12-088-080		CAP,E 2.2-50 SMG
				C617	87-016-215-080		CAP,E 1-160 M TWSS
				C801	87-A10-374-010		CAP,M/P 0.1-275 K RMR
				C804	87-A10-374-010		CAP,M/P 0.1-275 K RMR
				C807	87-A10-831-090		CAP,E 1000-25 SMG
				C808	87-A12-071-080		CAP,E 47-25 SMG
				C809	87-A11-148-080		CAP,TC U 0.1-50 ZF



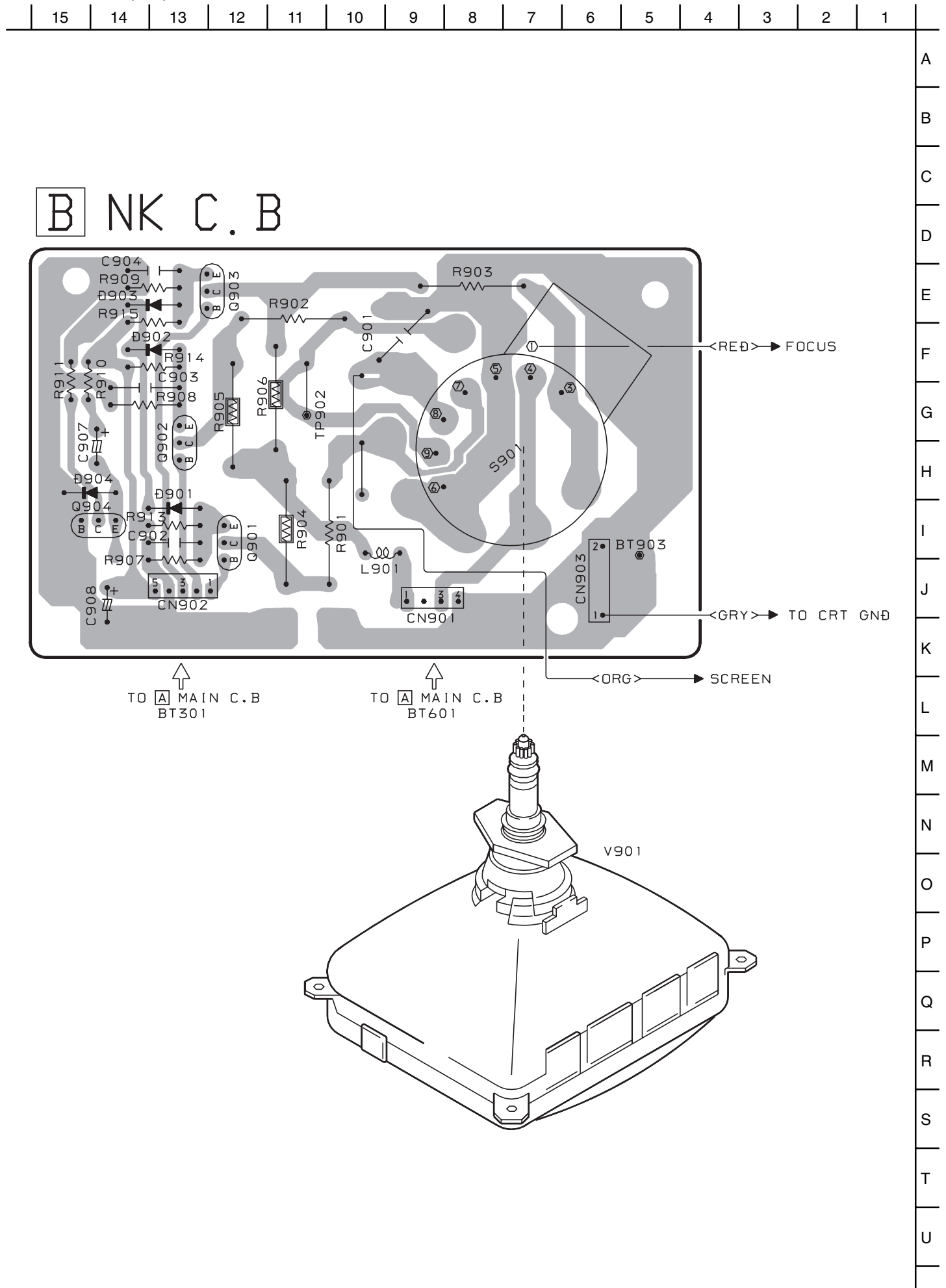
WIRING – 1 (MAIN)



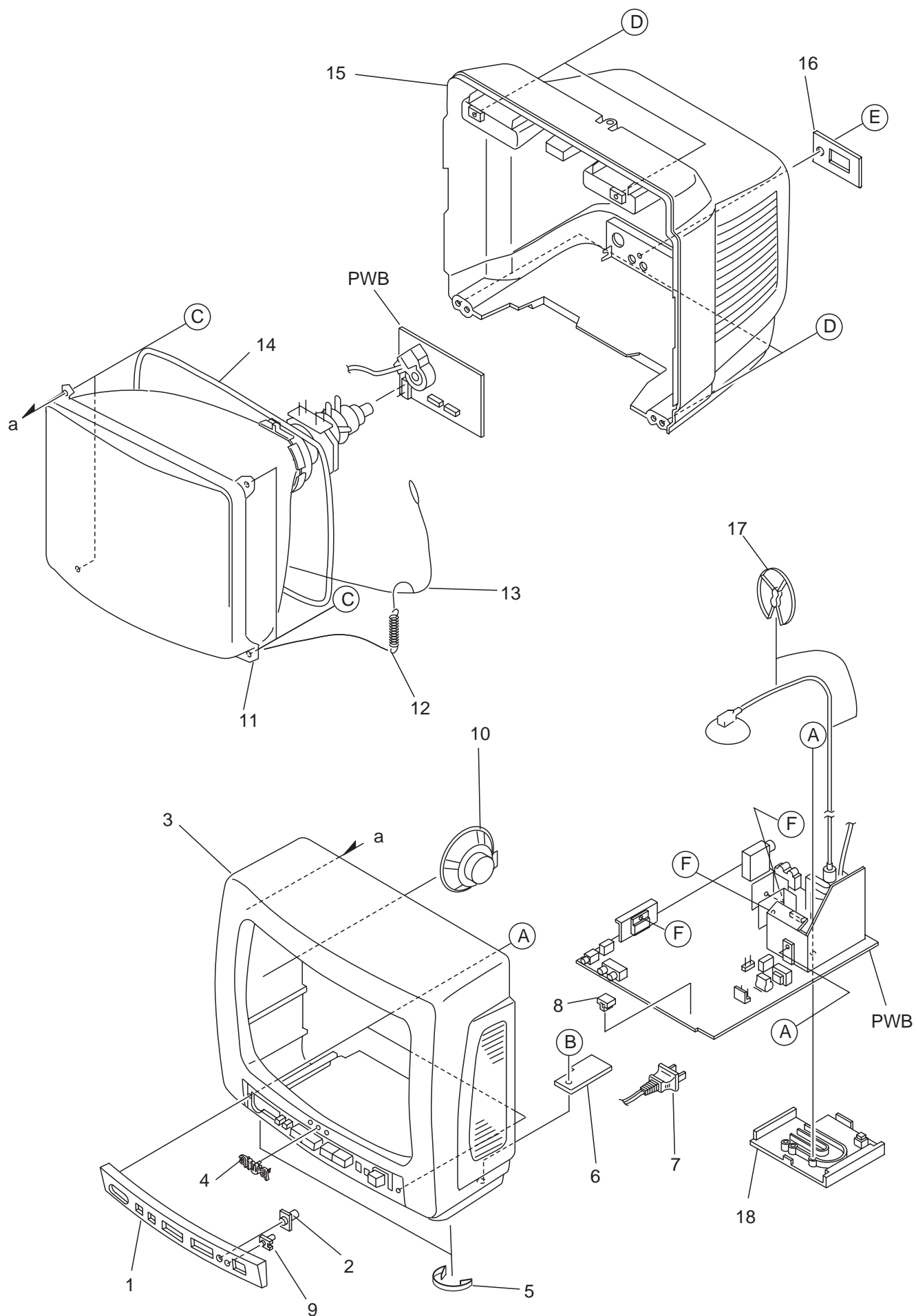
### SCHEMATIC DIAGRAM (MAIN / NK)



# WIRING – 2 (NK)



# MECHANICAL EXPLODED VIEW 1 / 1



## MECHANICAL PARTS LIST 1 / 1

REF. NO.	PART NO.	KANRI NO.	DESCRIPTION
1	8Z-JBJ-007-010		PANEL, CONTROL CN140
2	86-LBU-010-010		LENS, RC 2
3	8Z-JBJ-006-010		CABI, FR CN140
4	87-054-087-010		BADGE, AIWA 40
5	88-JBL-011-010		PLATE, FOOT ST
△	6	86-LBU-201-010	HLDR, AC CORD
7	87-JBC-628-010		AC CORD SET, NH BLK
8	84-LB3-216-010		HLDR, LED
9	84-LB3-046-010		LENS, LED
10	84-LB3-641-010		SP, F DIA 7.6
△	11	8Z-JBG-610-010	CRT, A34LRQ90X03 (VW)
12	84-LB3-205-010		SPR-E, EARTH
△	13	84-LB3-693-010	CONN ASSY, IP CRT GND
△	14	8Z-JBH-609-010	DGC, 14"US
15	86-LBU-002-510		CABI, REAR
16	8Z-JBJ-005-010		PLATE, JACK C131
17	87-A90-332-010		HLDR, SF-2001 HV CABLE
18	86-LB7-212-010		HLDR, FBT
A	87-067-680-010		BVI T3+3-10
B	87-067-758-010		BVT2+3-12 W/O SLOT
C	87-078-203-110		S-SCREW, W5-25
D	87-067-844-010		BVT2+4-16 BLK
E	87-067-761-010		TAPPING SCREW, BVT2+3-10
F	87-067-579-010		TAPPING SCREW, BVT2+3-8

## COLOR NAME TABLE

Basic color symbol	Color	Basic color symbol	Color	Basic color symbol	Color
B	Black	C	Cream	D	Orange
G	Green	H	Gray	L	Blue
LT	Transparent Blue	N	Gold	P	Pink
R	Red	S	Silver	ST	Titan Silver
T	Brown	V	Violet	W	White
WT	Transparent White	Y	Yellow	YT	Transparent Yellow
LM	Metallic Blue	LL	Light Blue	GT	Transparent Green
LD	Dark Blue	DT	Transparent Orange	GM	Metallic Green
YM	Metallic Yellow	DM	Metallic Orange	PT	Transparent Pink
LA	Aqua Blue	GL	Light Green		

アイワ株式会社 〒110-8710 東京都台東区池之端1-2-11 ☎03(3827)3111 (代表)  
**AIWA CO.,LTD.** 2-11, IKENOHATA 1-CHOME, TAITO-KU, TOKYO 110, JAPAN TEL:03 (3827) 3111