

IV. ADJUSTMENT

1. FIRMWARE

1) Resetting Camera

1. Turn on the Camera



2. Press and hold the Up button and the Shutter button (S2) simultaneously and then press the Power button to turn it off.



3. Turn on the camera and check whether the camera is reset or not.



IV. ADJUSTMENT

2) Checking the Version

1. Remove the memory card from the camera.
2. Turn on the camera.



3. Select the Voice Record mode by pressing the MENU button.



4. Press the buttons in the following sequence: Left Button → Right Button → Down Button → Fn Button.



5. Check the firmware version and turn off the camera.



IV. ADJUSTMENT

3) Upgrading the Firmware

1. Insert the SD card containing the firmware file into the camera.

* Updating the firmware will delete all the data in the Flash memory. Be sure to back up all the data onto your PC before updating the firmware. The firmware file name is always "S483.ELF".

2. Connect the AC adapter or a fully charged battery.



To upgrade the firmware, the battery level indicator on the LCD monitor must be full (level three).

3. Turn on the camera.



4. Select the Voice Record mode by pressing the MENU button.



5. Press the buttons in the following sequence: Left Button → Right Button → Up Button → Fn Button



IV. ADJUSTMENT

6. The upgrade will start, displaying the progress message on the LCD as shown below.
(The green Status LED blinks.)



7. After completing the upgrade, the camera is turned off automatically.

8. Turn on the camera again and select Reset in the SETUP menu.



4) Full Firmware

Full Firmware Procedures 1

Perform when the camera does not operate at all, even if the power is on.

▷ Camera phenomenon :

- A phenomenon where the electric current consumption (check the power supply) shows between 200 and 300mA and the camera does not operate when it is turned on.

▷ Cause :

- Caused by damage to the data of address "0" in the flash memory on the main PCB.

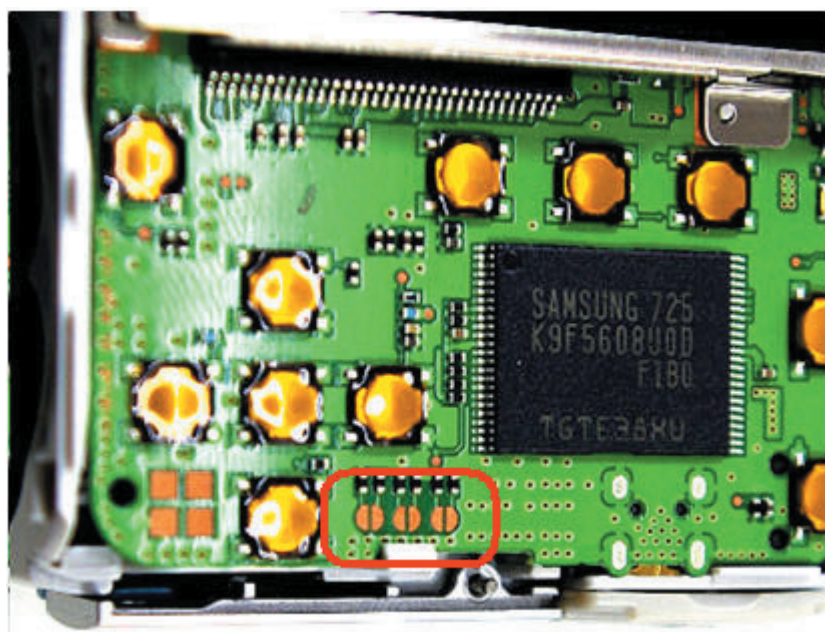
▷ Corrective action :

- Restore the flash memory address "0" on the main PCB by running a full version firmware as below.

▷ Action after completion :

- Lens shading and defect cells must be adjusted after completing a full version firmware.

1.Short circuit with 3 patterns on the main PCB as in the diagram below.



IV . ADJUSTMENT

2. Insert the SD card containing the firmware file into the camera.

* Updating the firmware will delete all the data in the Flash memory. Be sure to back up all the data onto your PC before updating the firmware. The firmware file name is always "S483_FULLL.ELF".

3. Connect a power supply to the camera and turn on the camera.

Use a battery connection tool to connect the camera to the power supply.

4. If the display current on the power supply goes up to 200mA and then down to 0, the upgrade is completed.

Full Firmware Procedures 1

You can conduct a Full Firmware upgrade if your camera only has the basic functions, according to your needs.

▷ Note :

- Full Firmware is a firmware upgrade method that erases all the data and then reinstalls the firmware.
- Since Full Firmware deletes the adjustment data, you have to backup saved adjustment data before conducting Full Firmware.
- The adjustment data will automatically be backed up into the SD card if you complete the following Full Firmware upgrade procedures. In this case, you can reload the adjustment data into the camera as follows without removing the SD card containing the adjustment data.
- Check if the following data files are copied into the SD card before starting a Full Firmware upgrade: LSCLUT0.BIN, DefectivePixel0.bin, and DefectivePixel1.bin.

1. Insert the SD card containing the firmware file into the camera.

* Updating the firmware will delete all the data in the Flash memory. Be sure to back up all the data onto your PC before updating the firmware. The firmware file name is always "S483_FULL.ELF".

2. Connect the AC adapter or a fully charged battery.



To upgrade the firmware, the battery level indicator on the LCD monitor must be full (level three).

IV. ADJUSTMENT

3. Turn on the camera.



4. Enter the voice recording mode by pressing the menu button twice.



5. Press the buttons in the following sequence: Left Button → Right Button → Down Button → Fn Button



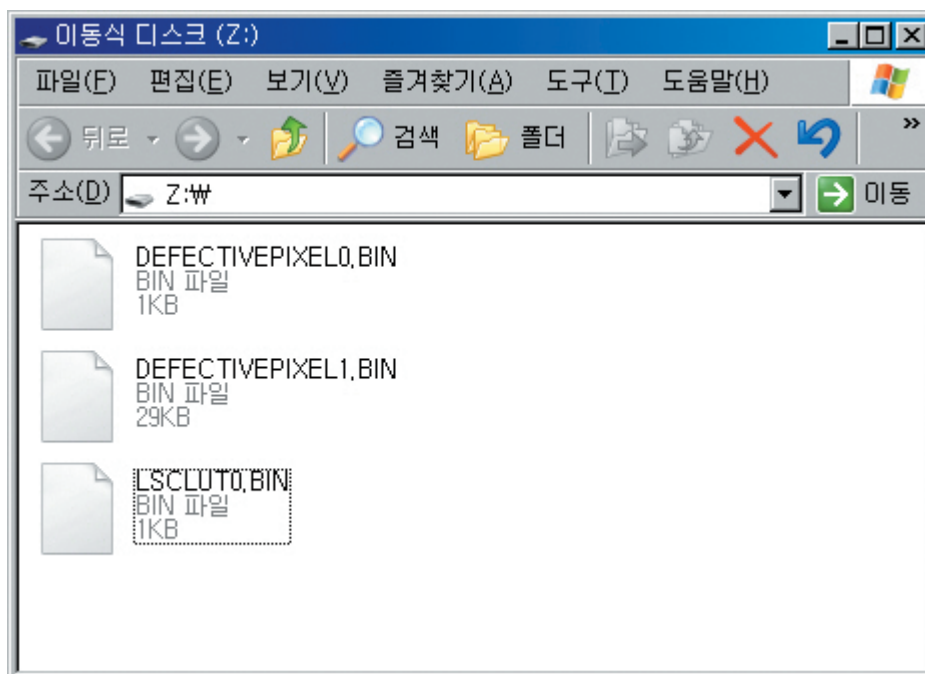
IV. ADJUSTMENT

6. The upgrade will start, displaying the progress message on the LCD as shown below.

- The adjustment data are automatically backed up into the SD card when you conduct a Full Firmware upgrade.



- Check if the following data files are copied into the SD card: LSCLUT0.BIN, DefectivePixel0.bin, and DefectivePixel1.bin



- After the upgrade of the full version firmware, upload backup process data. Insert an SD memory card where the process data is saved and turn the camera on again.
Enter the voice recording mode by using the menu button.
Then press the direction buttons in the following sequence: Tele Button → Wide Button → Down Button → OK Button



IV . ADJUSTMENT

8. The screen appears as below, and uploading will begin.



Even if the upload is completed, the power won't be turned off automatically.
Press the power button to turn it off.