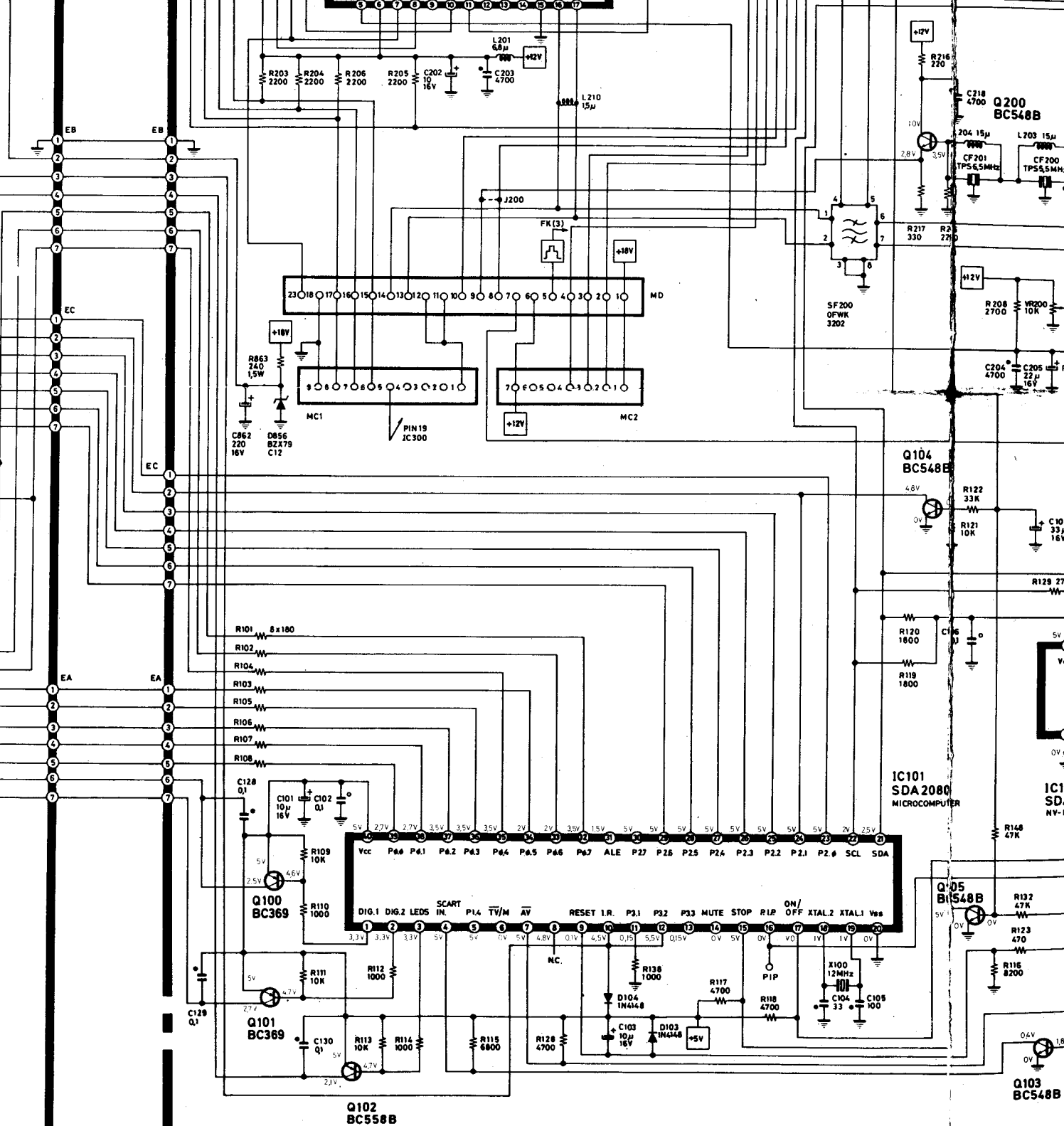
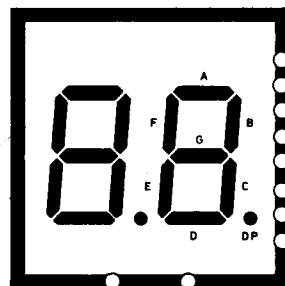


LD1
TKD562H

REMOTE CONTROL RECEIVER PCB

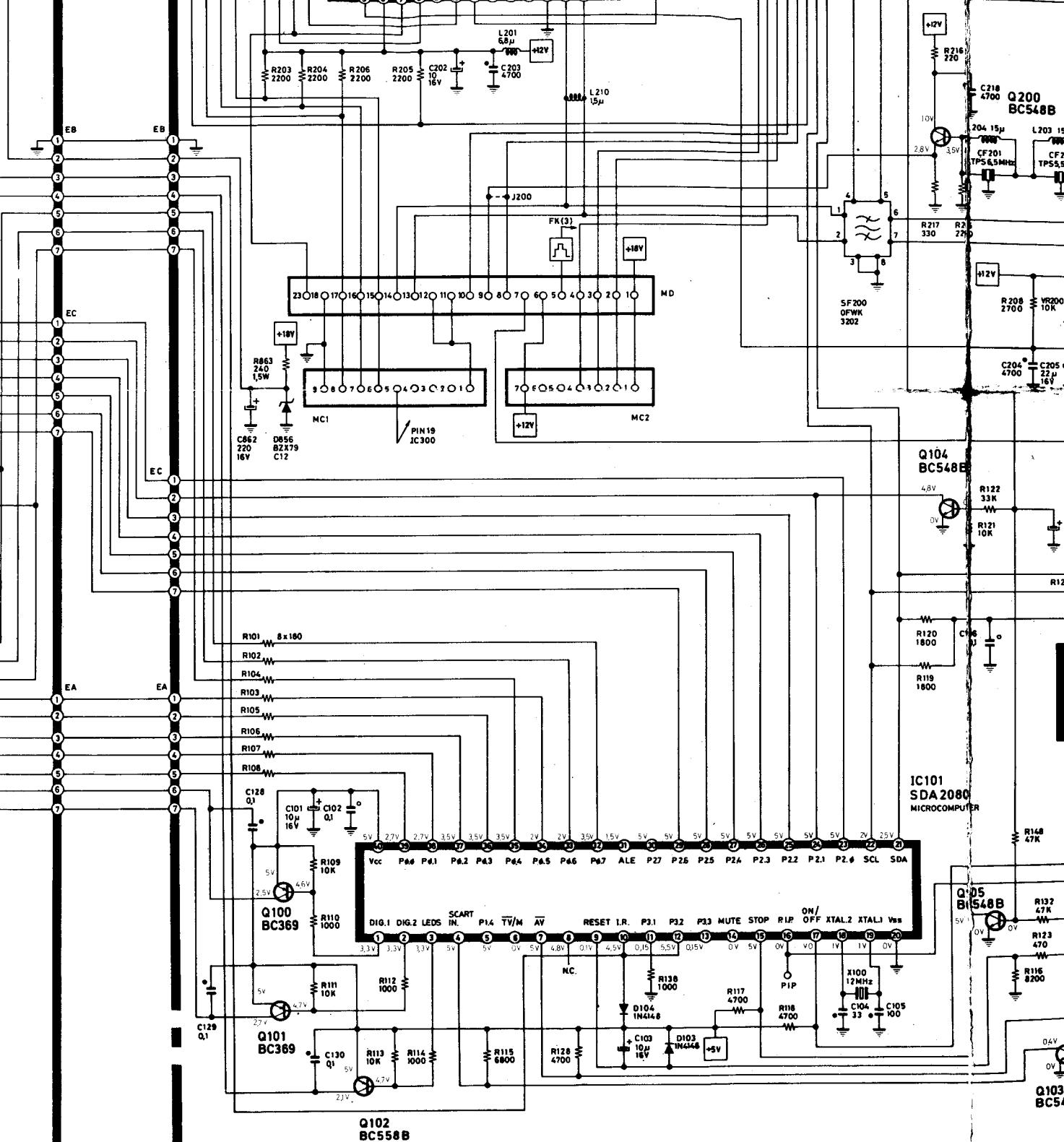
75-1274

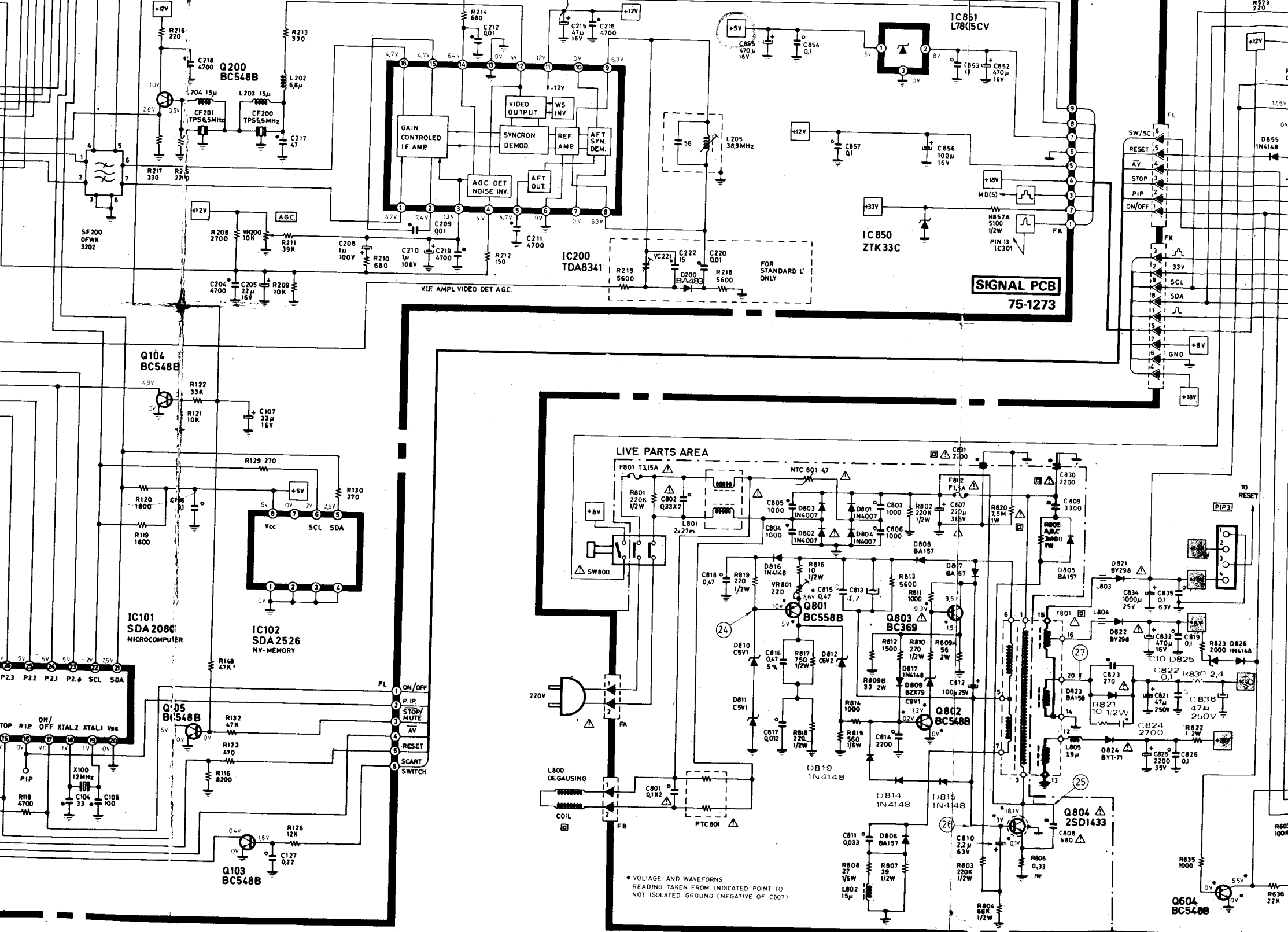




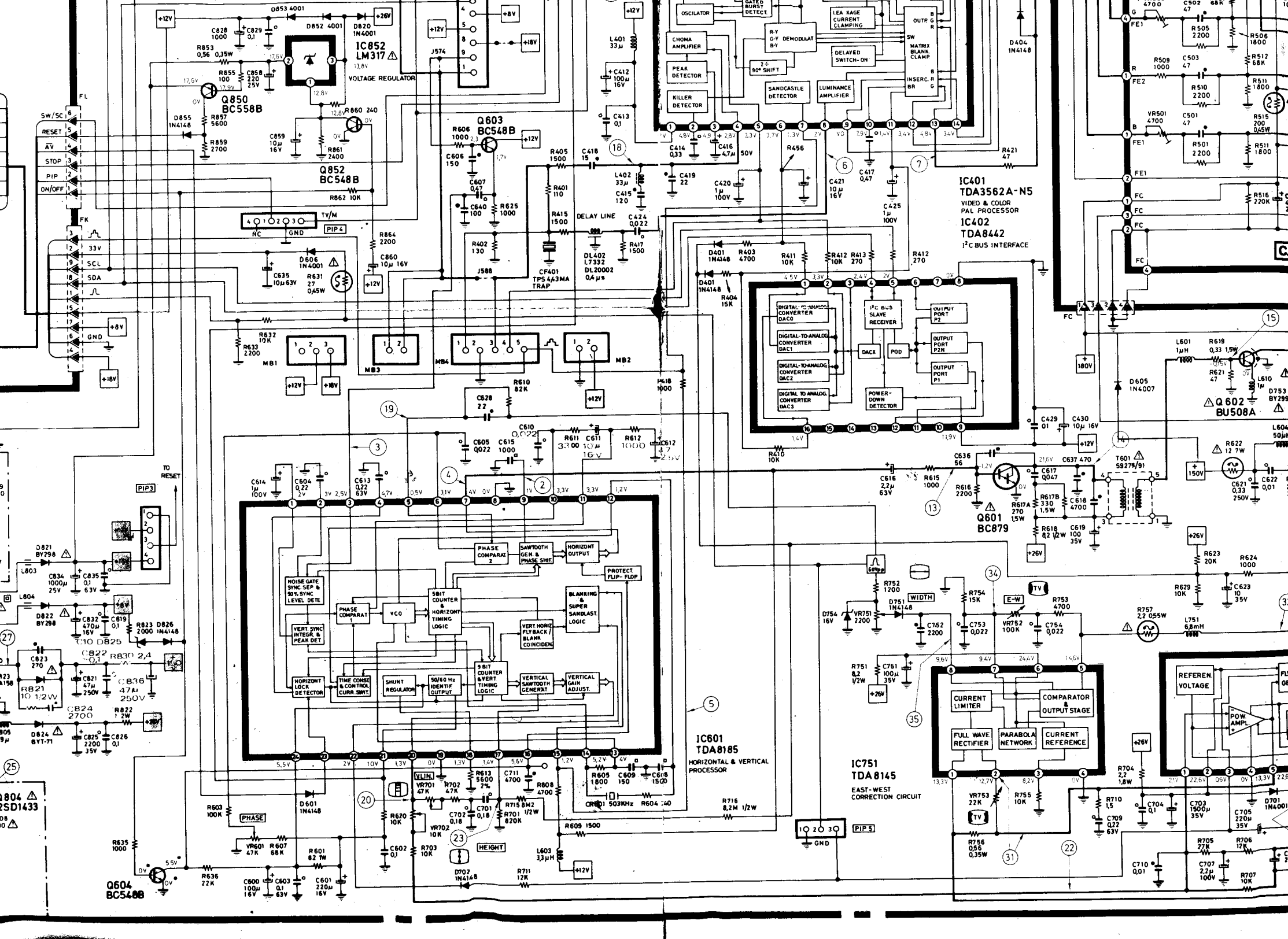
REMOTE CONTROL RECEIVER PCB

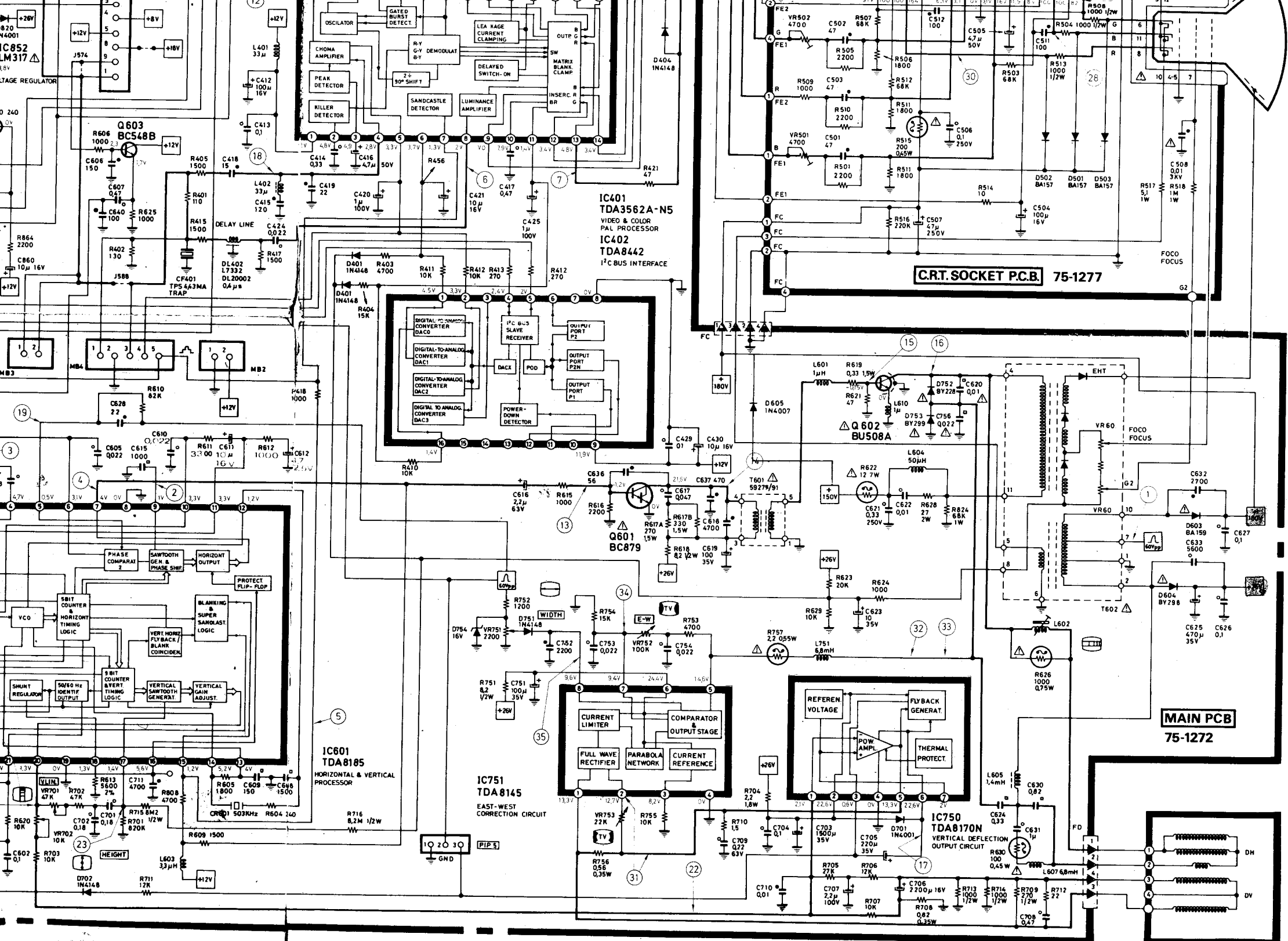
75-1274

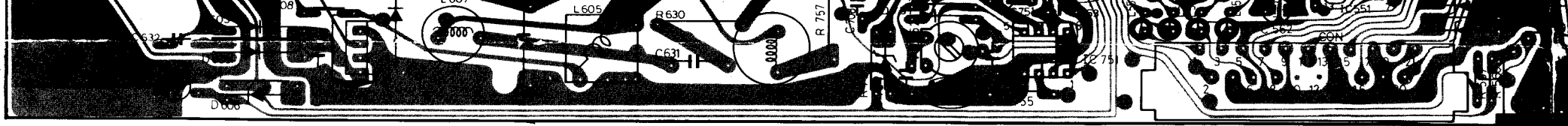




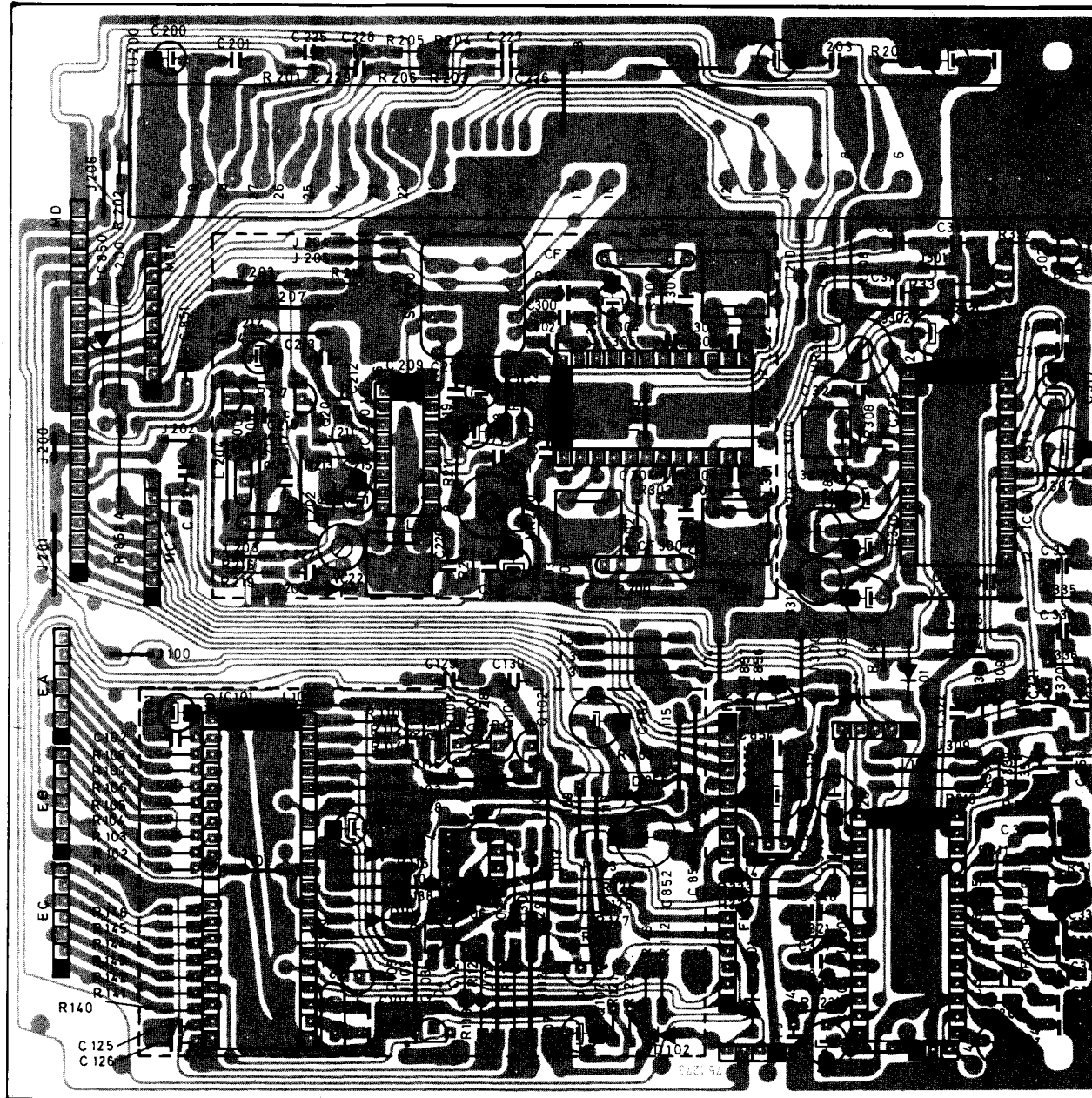
Q604
BC548B



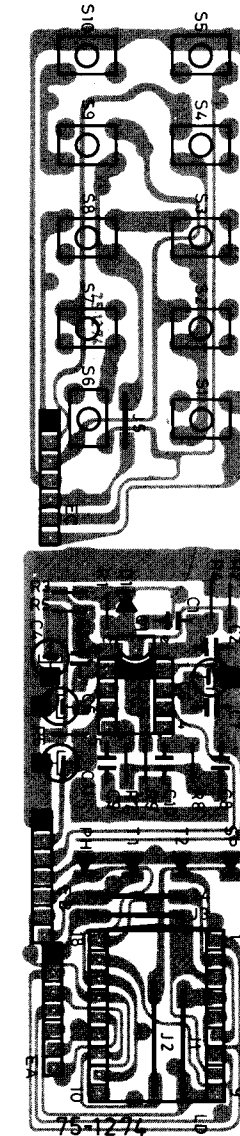




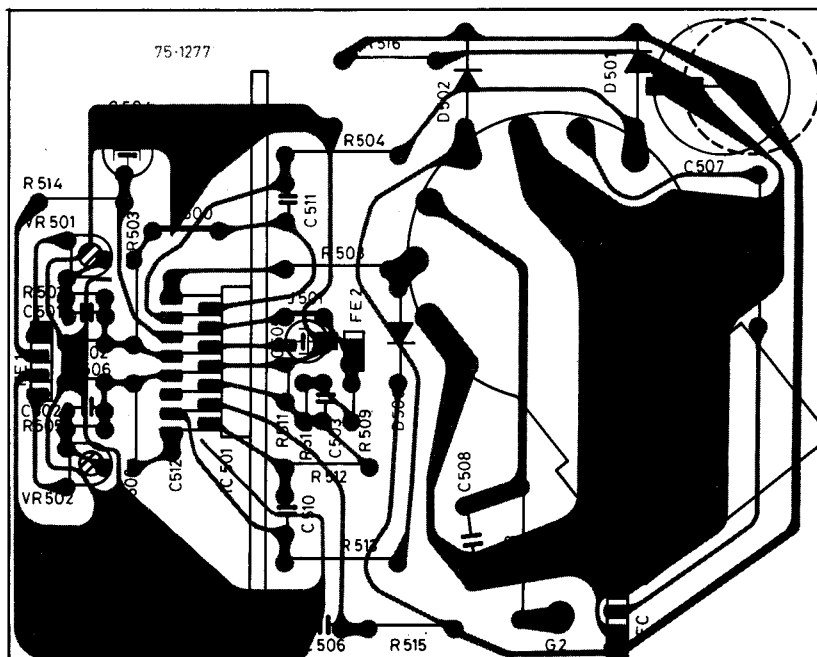
SIGNAL P.C.B.



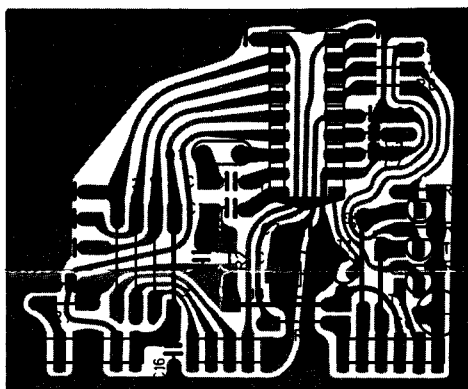
REMOTE CONTROL RECEIVER P.C.B.



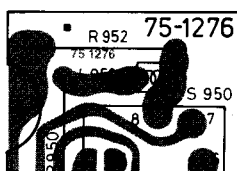
C.R.T. SOCKET P.C.B.



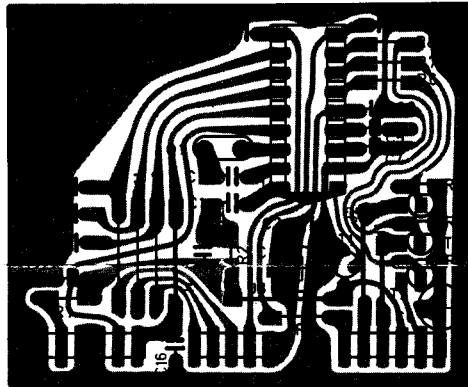
P.L.L. P.C.B.



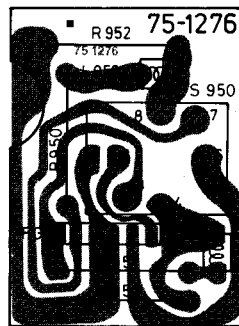
HEADPHONE P.C.B



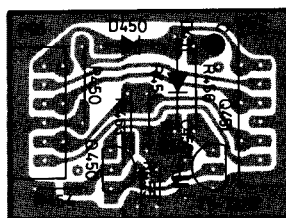
P.L.L. P.C.B.

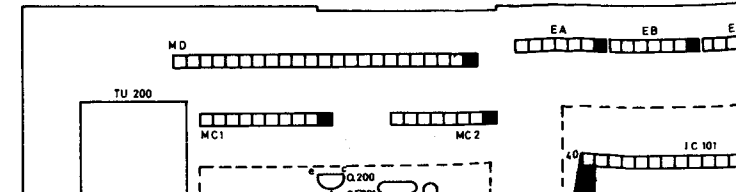
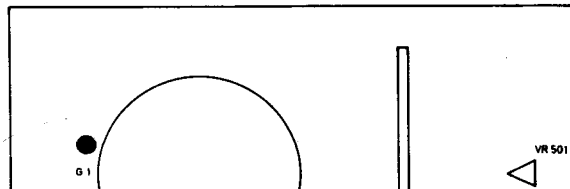


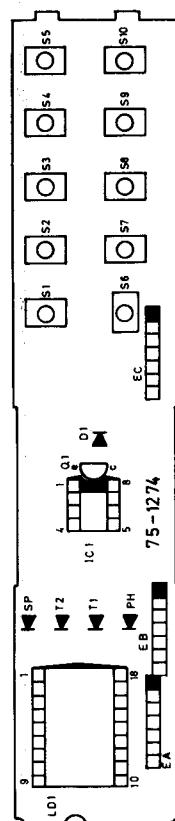
HEADPHONE P.C.B

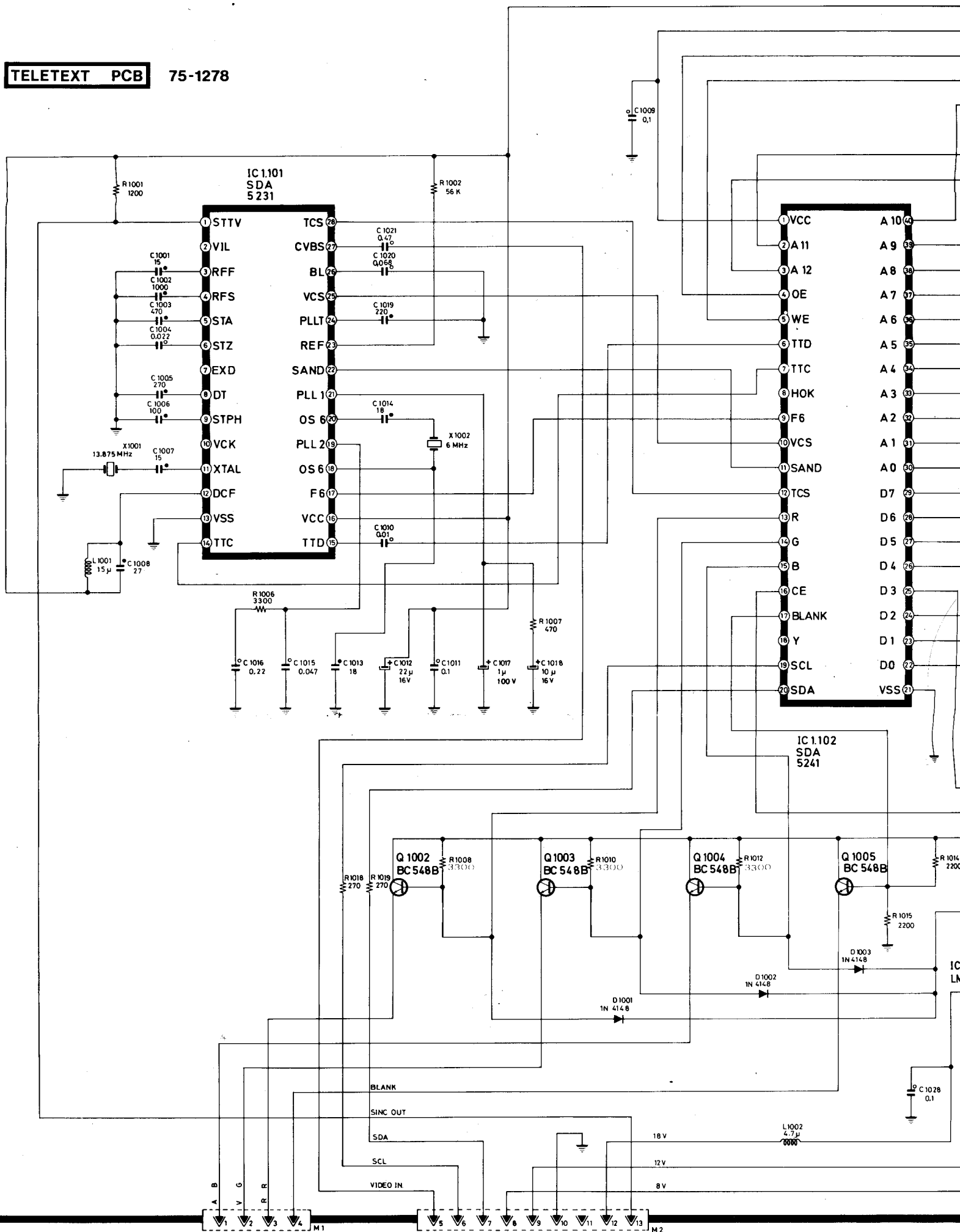


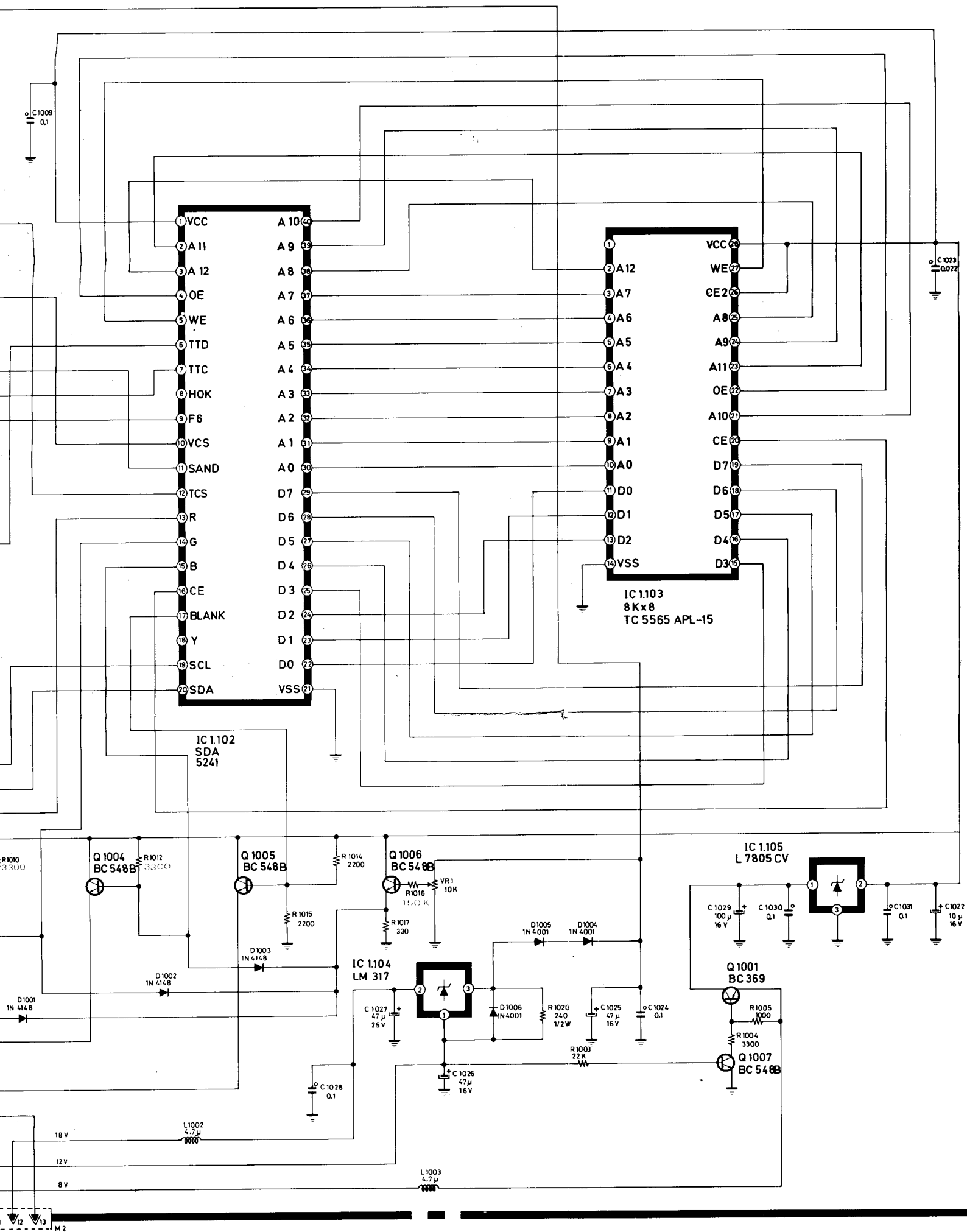
P.B.L. P.C.B.

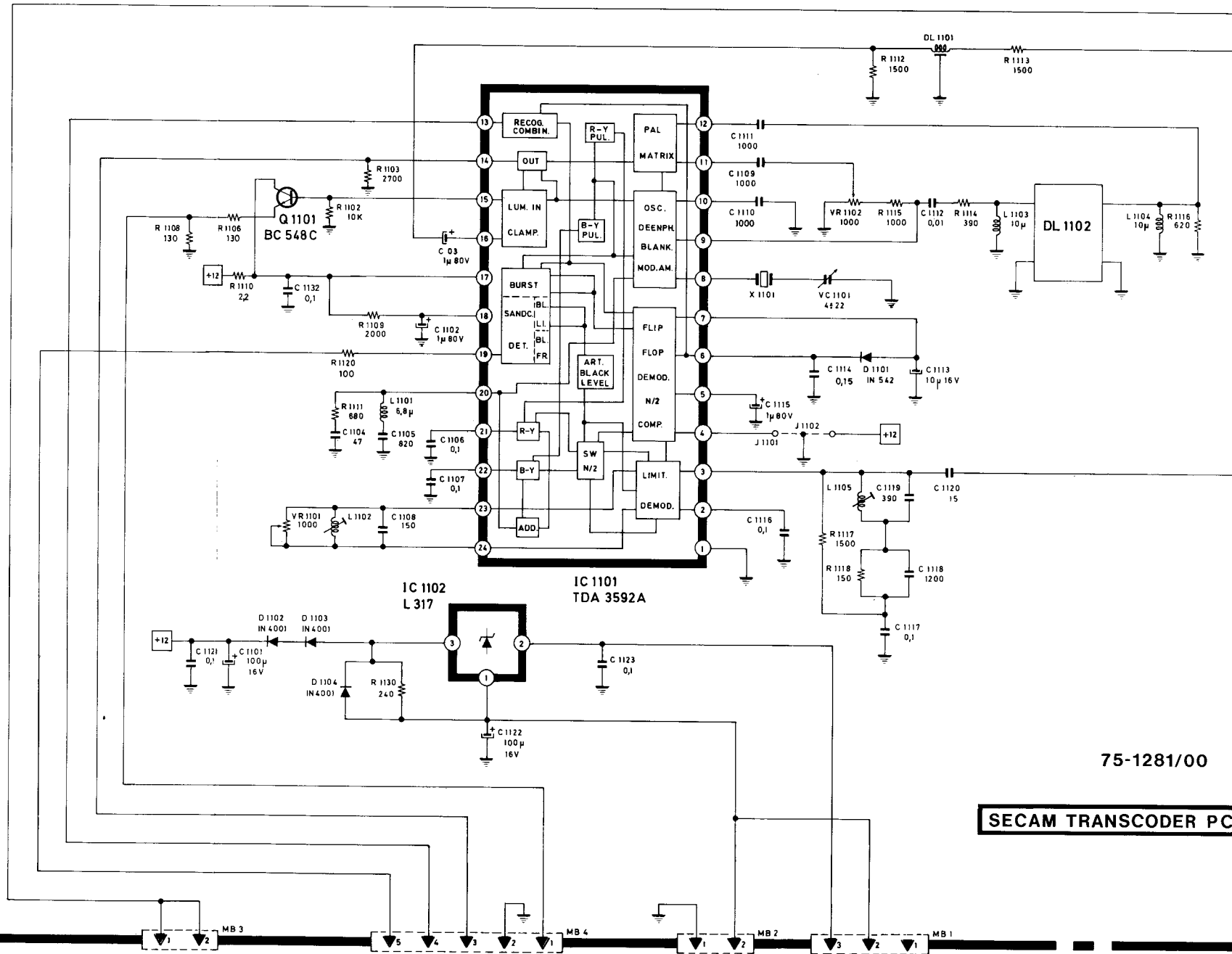








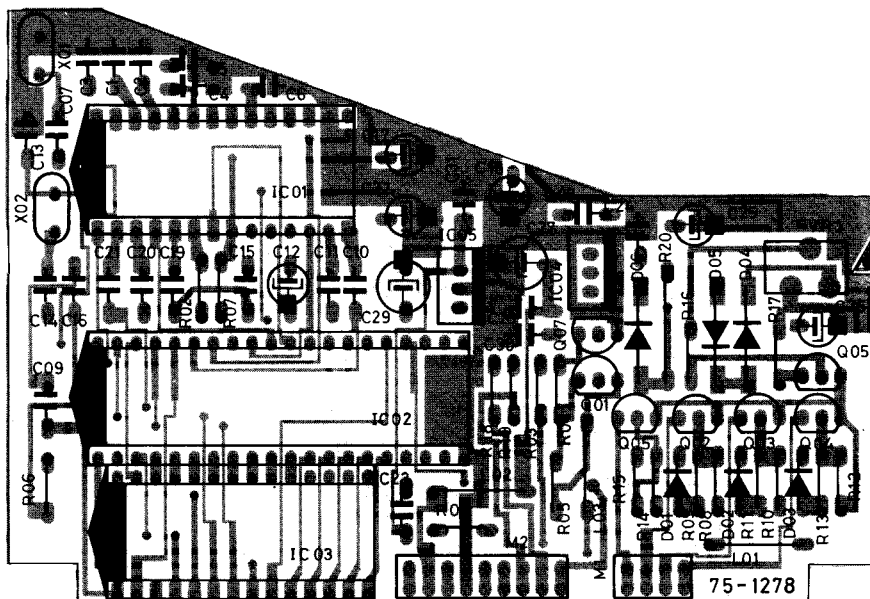




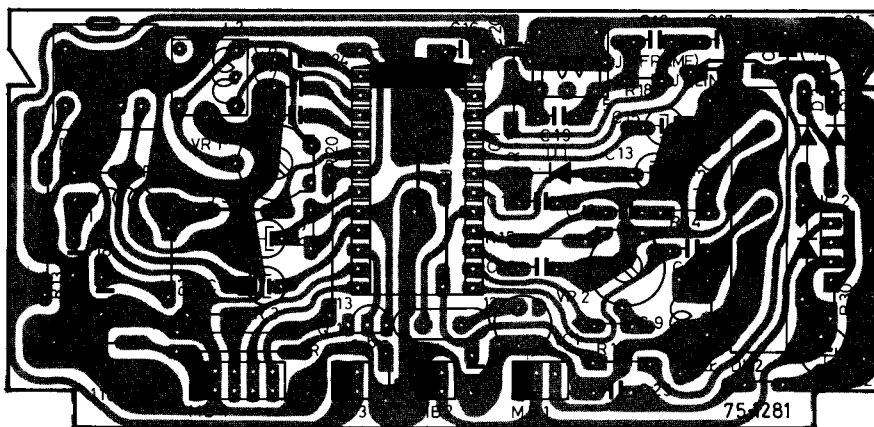
75-1281/00

SECAM TRANSCODER PCB

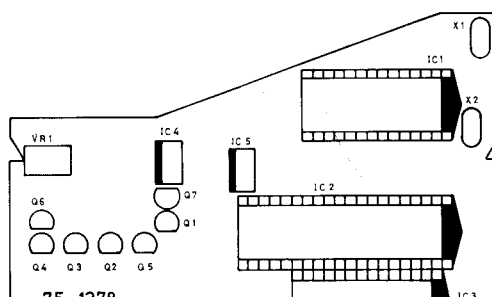
TELETEXT PCB

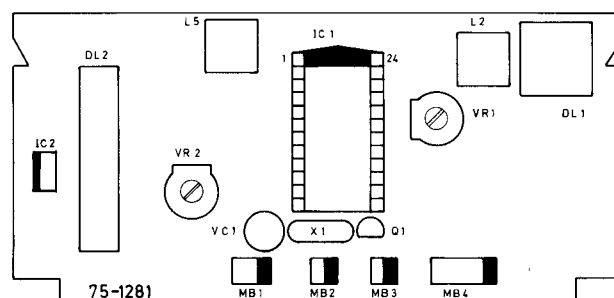


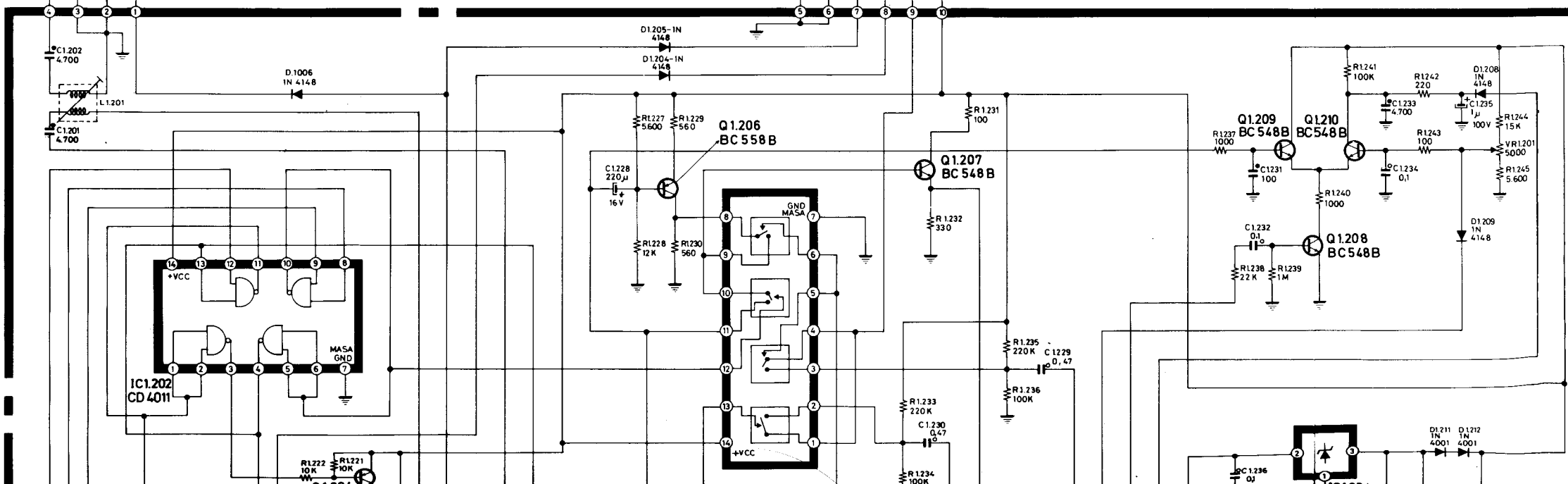
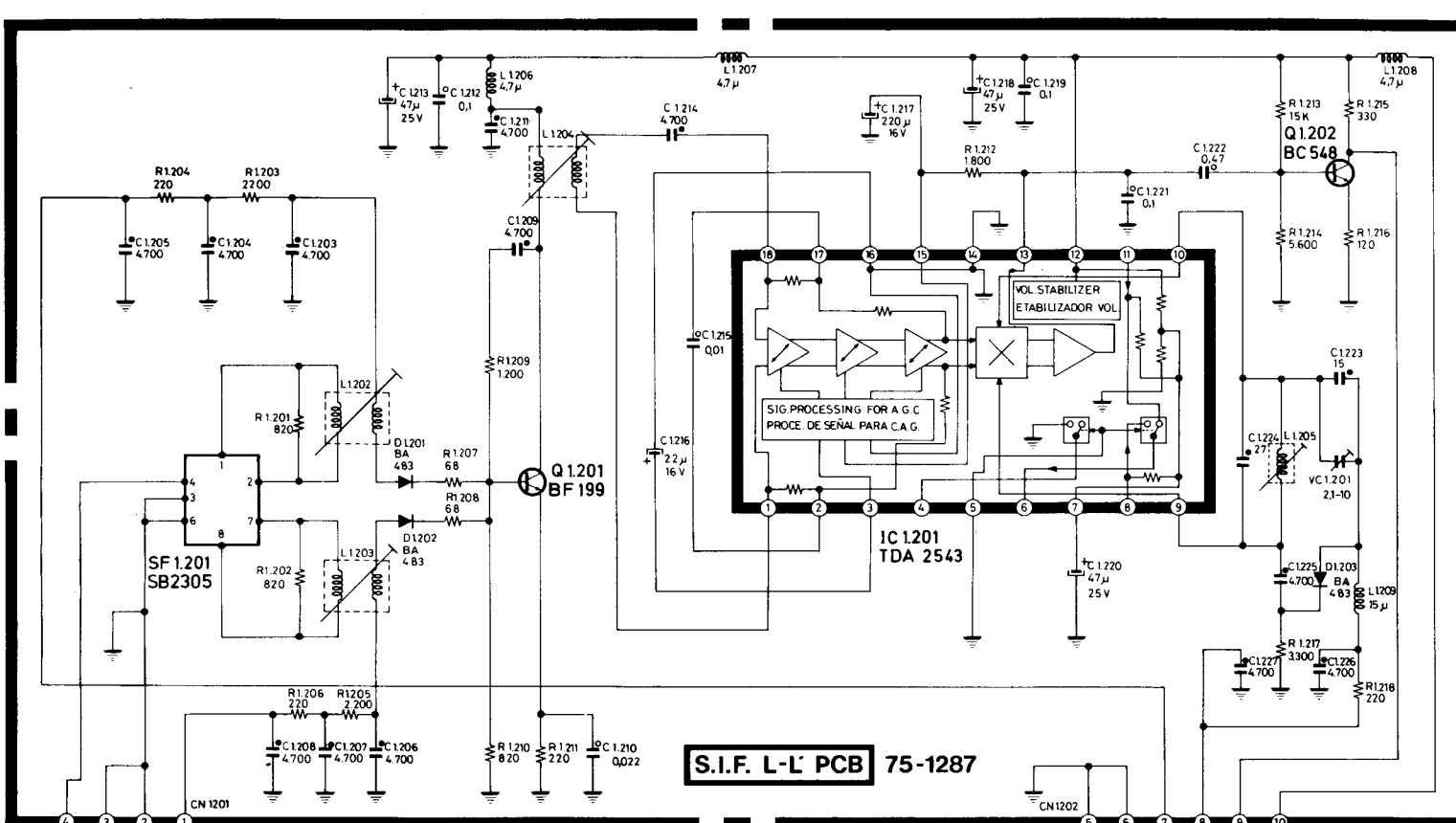
SECAM TRANSCODER PCB



COMPONENTS LOCATION

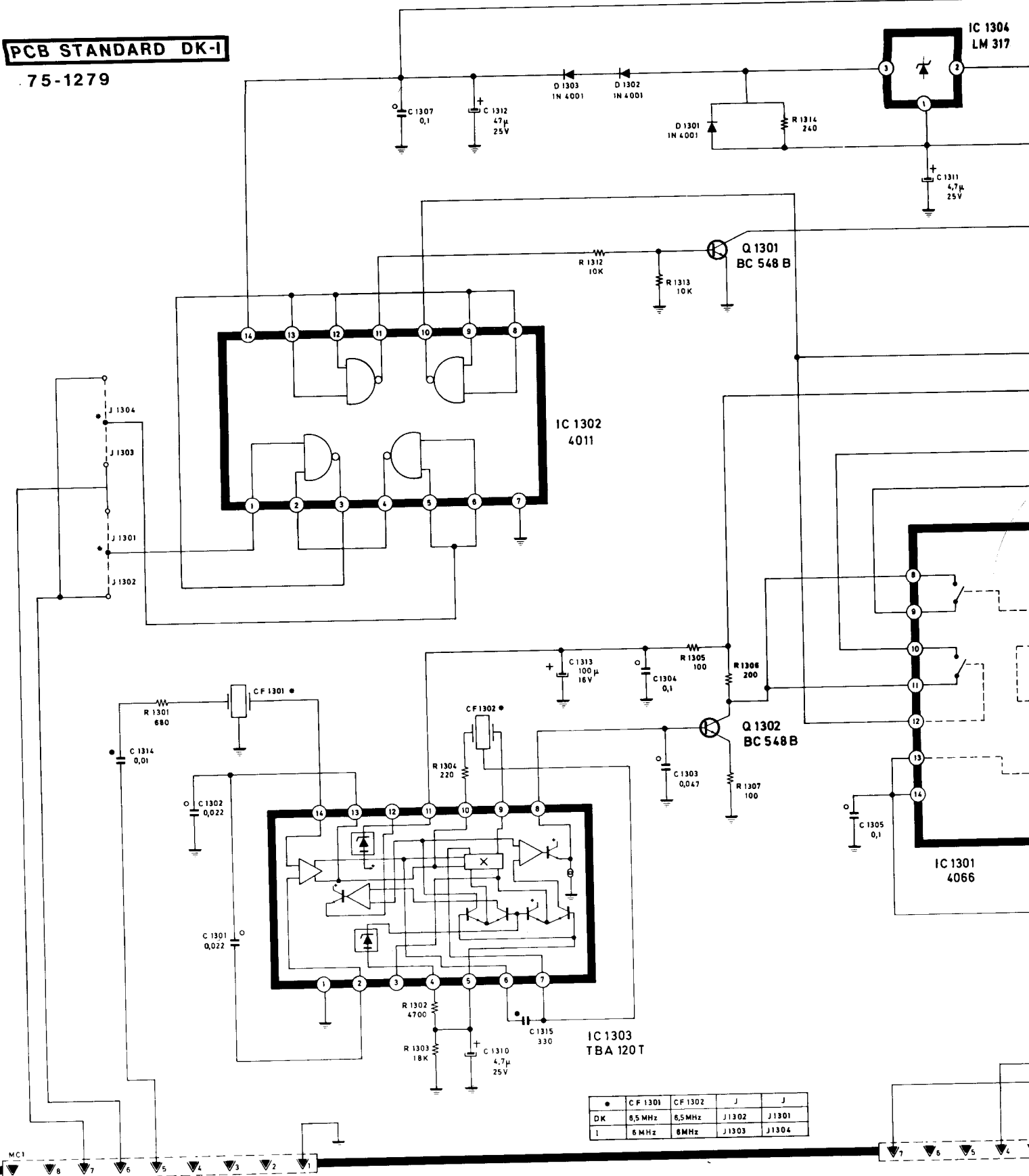






PCB STANDARD DK-I

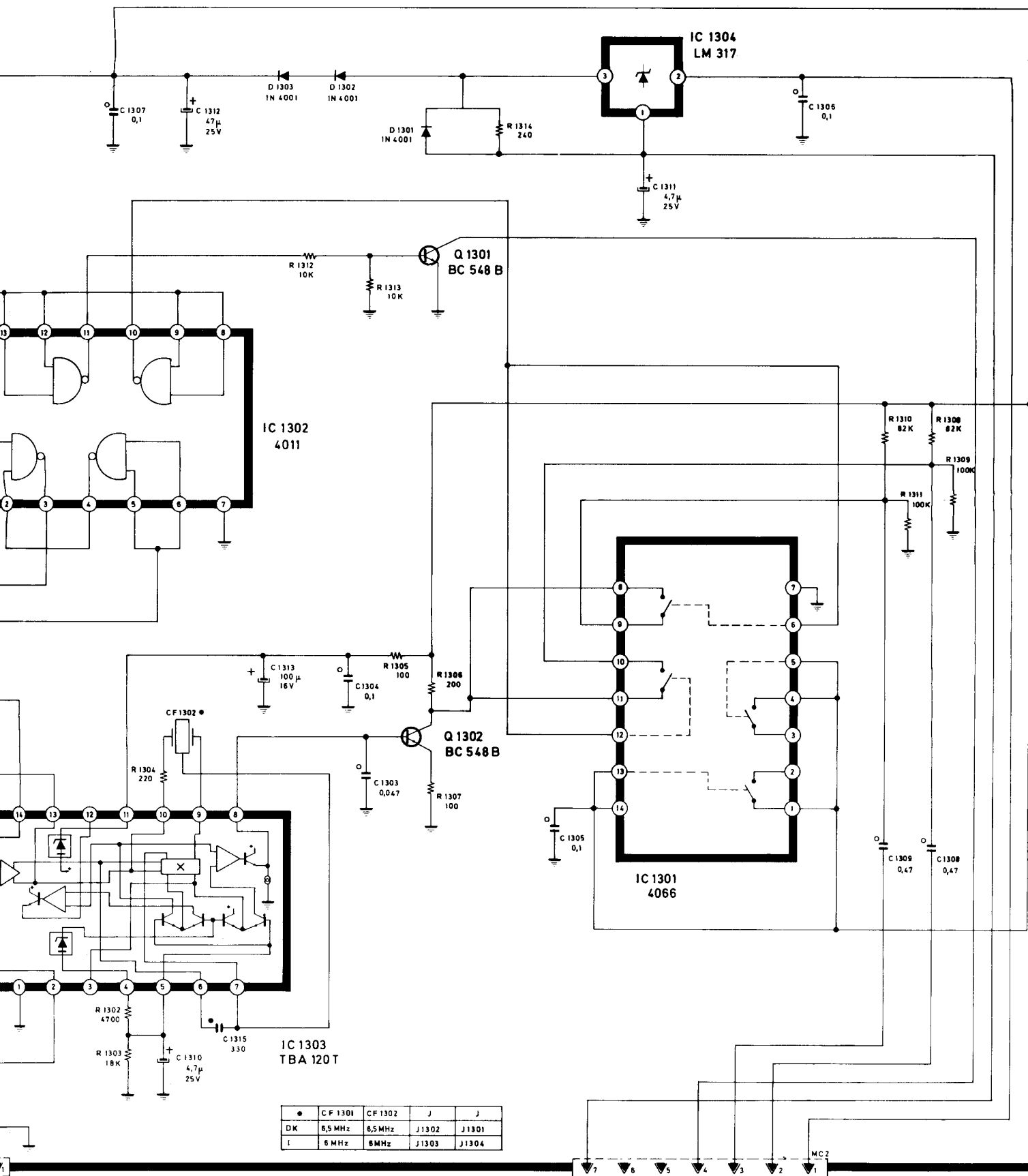
75-1279



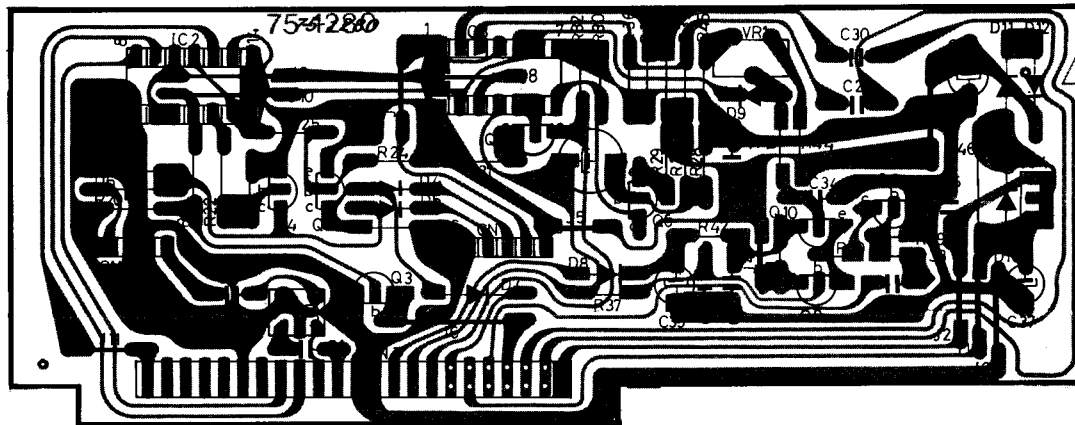
	CF 1301	CF 1302	J	J
DK	6,5 MHz	6,5 MHz	J 1302	J 1301
I	6 MHz	6 MHz	J 1303	J 1304

BEACHTUNG

Vertangaben für Widerstände in ohm, K = 1.000 / M = 1.000.000.
 n nicht anderslautend im Schaltplan vermerkt, sind alle
 ensatornwerte unter in μ F und über 1 in pF ausgewiesen.
 nungsangaben sind gegen Chassis Masse bezogen. Alle Spann-
 gemessen bei Normaleinstellung mit Farbbalken-Signal. Einige
 nungsangaben können mit dem Antennensignal variieren.
 Oscillogramme sind bezogen auf Empfang eines Farbbalken-Signals
 Normaleinstellung sowie gemessen mit einem breitbandigen Osci-
 pe unter Verwendung kapazitätsarmer Tastköpfe.
 Widerstandswerte von Transformatoren sind in unbelastetem



STANDARD L-L' PCB



COMPONENTS LOCATION

