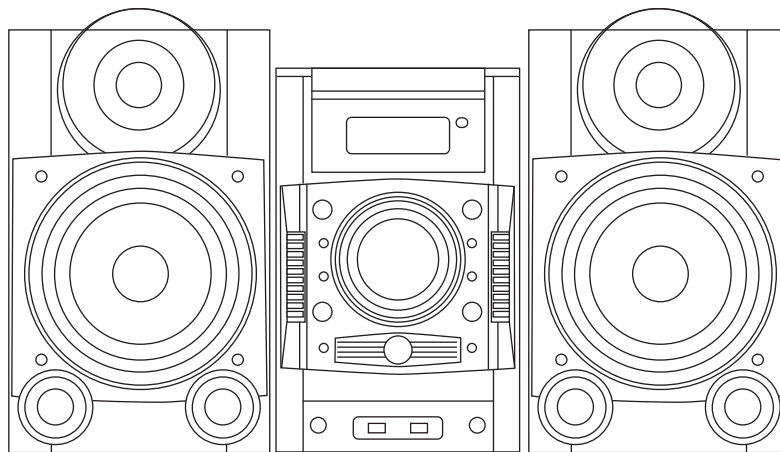


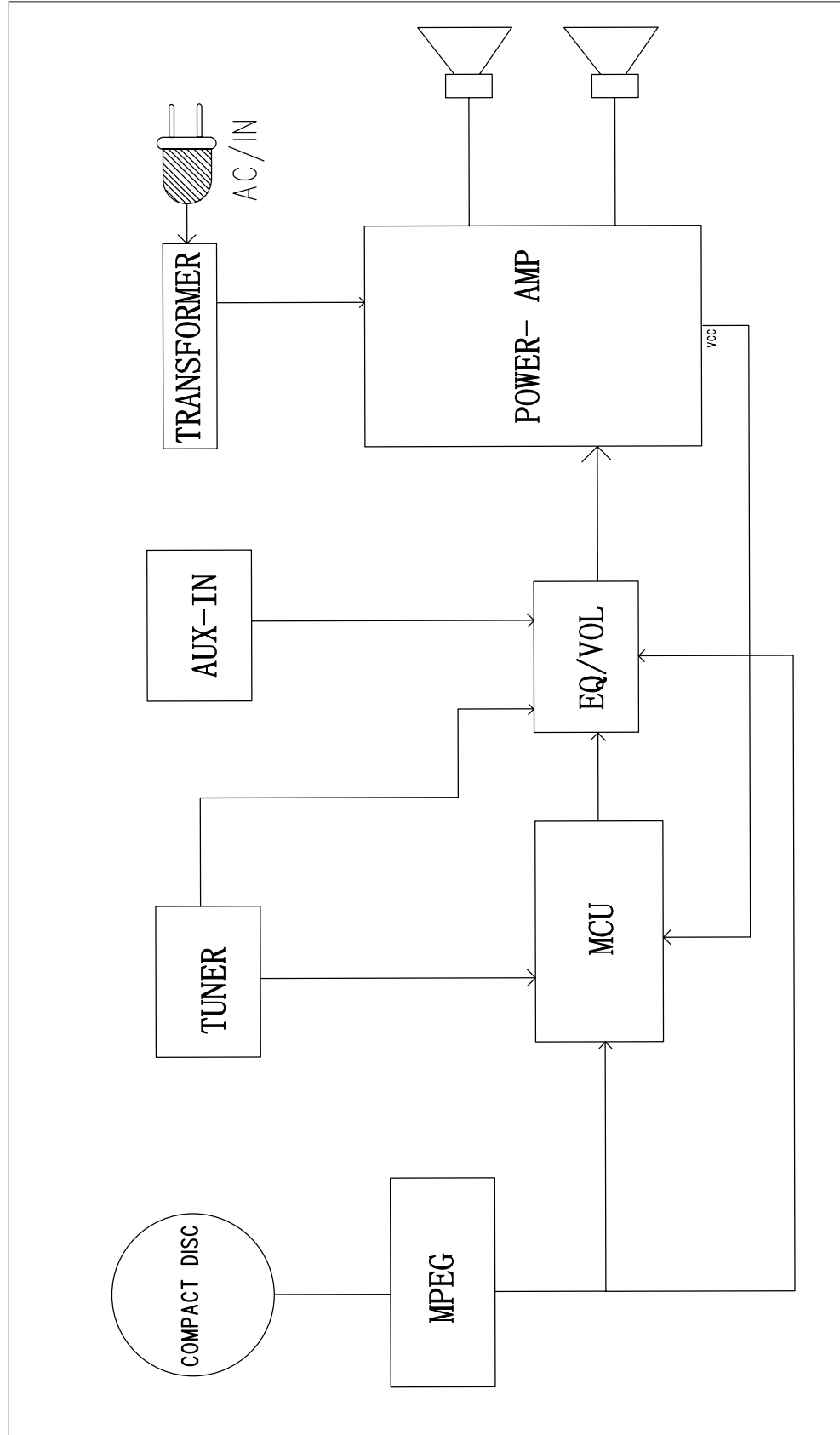
**CD/MP3 PLAYER WITH PLL STEREO RADIO**  
**DCG-105**



**CONTENTS**

**PAGE**

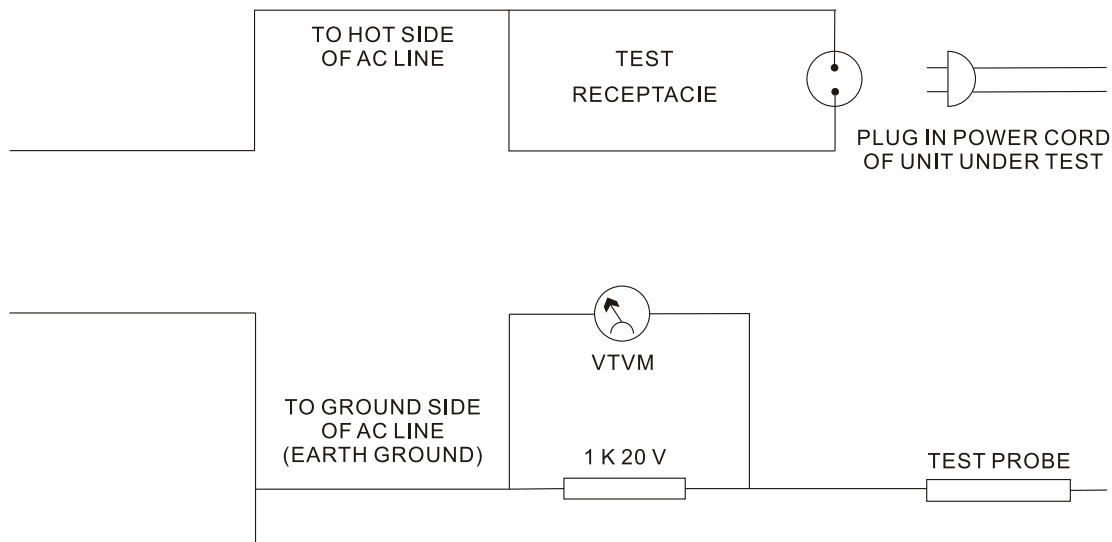
BLOCK DIAGRAM .....	2
SAFETY CHECKS .....	3
PRINTED CIRCUIT BOARDS .....	4-6
SCHEMATIC DIAGRAMS .....	7-9
EXPLODED VIEW .....	10
TROUBLE SHOOTING .....	11



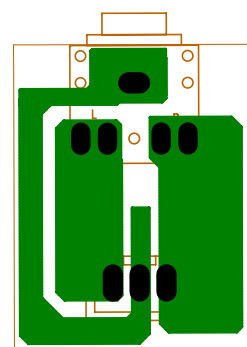
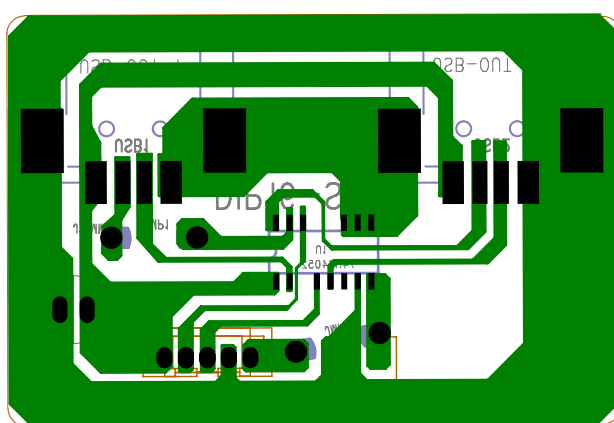
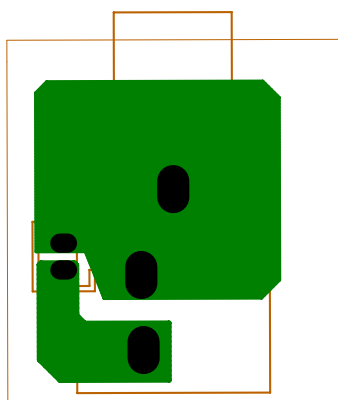
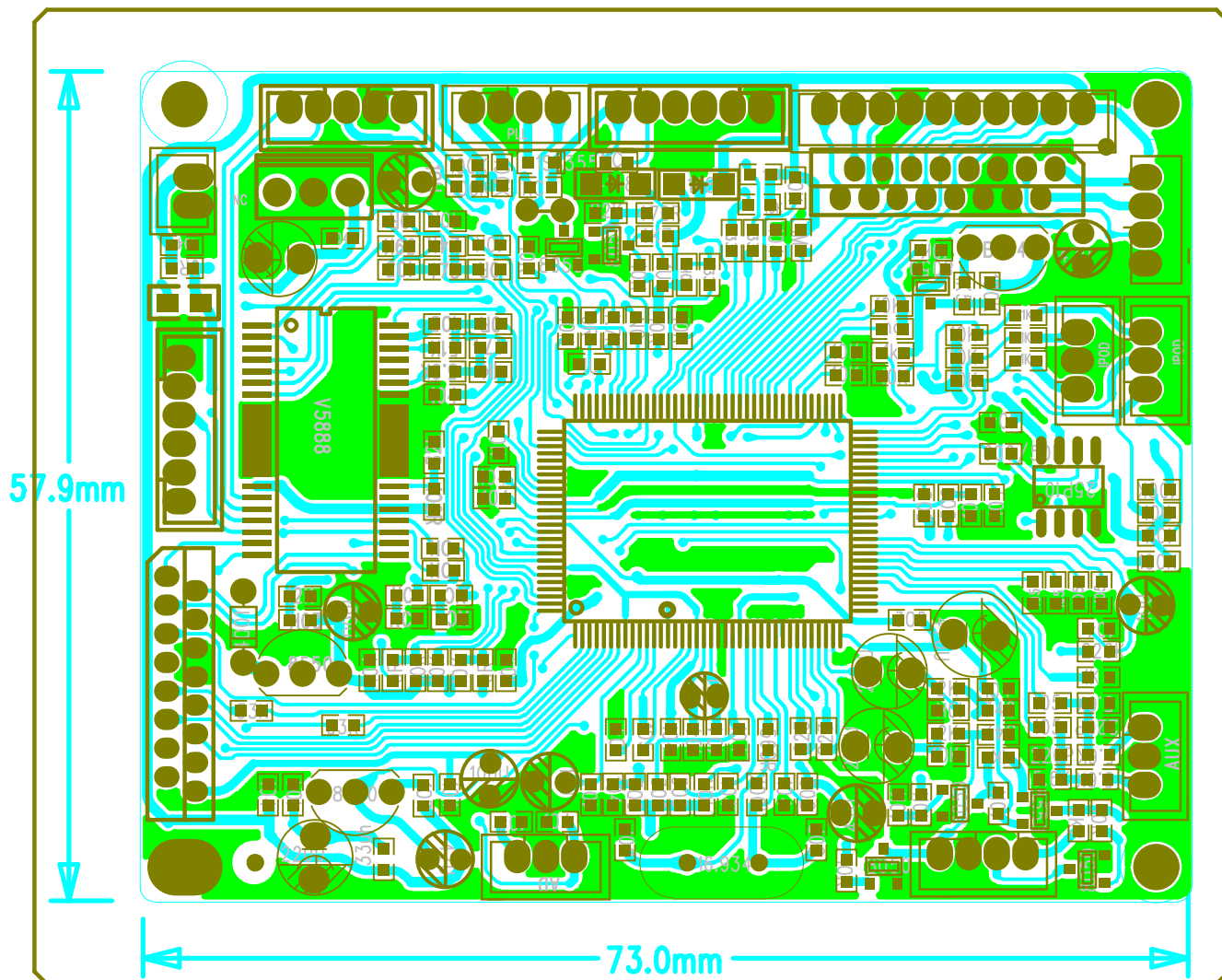
# SAFETY CHECKS

**Important Note!!!** Do the following safety checks after servicing this unit.

1. Remove all the externally connected test equipment and wires before testing the unit.
2. Use the safety test circuit as shown below.
3. Plug the power cord or unit to be tested into the test receptacle.
4. Switch the unit being tested to ON or PLAY.
5. Connect external jack/terminal contact VTVM across a 1k resistor in the test circuit. Set the meter to a high( 150V AC ) scale to avoid meter damage and then touch the points with the test probe.  
If the meter reading indicates less than 3 volts on all test points, set the meter to a low (3V AC) scale and repeat the test.
6. Any reading greater than 0.2 volt indicates a potential shock hazard. If this occurs, determine the cause of the leakage, correct the problem, and repeat the safety test.

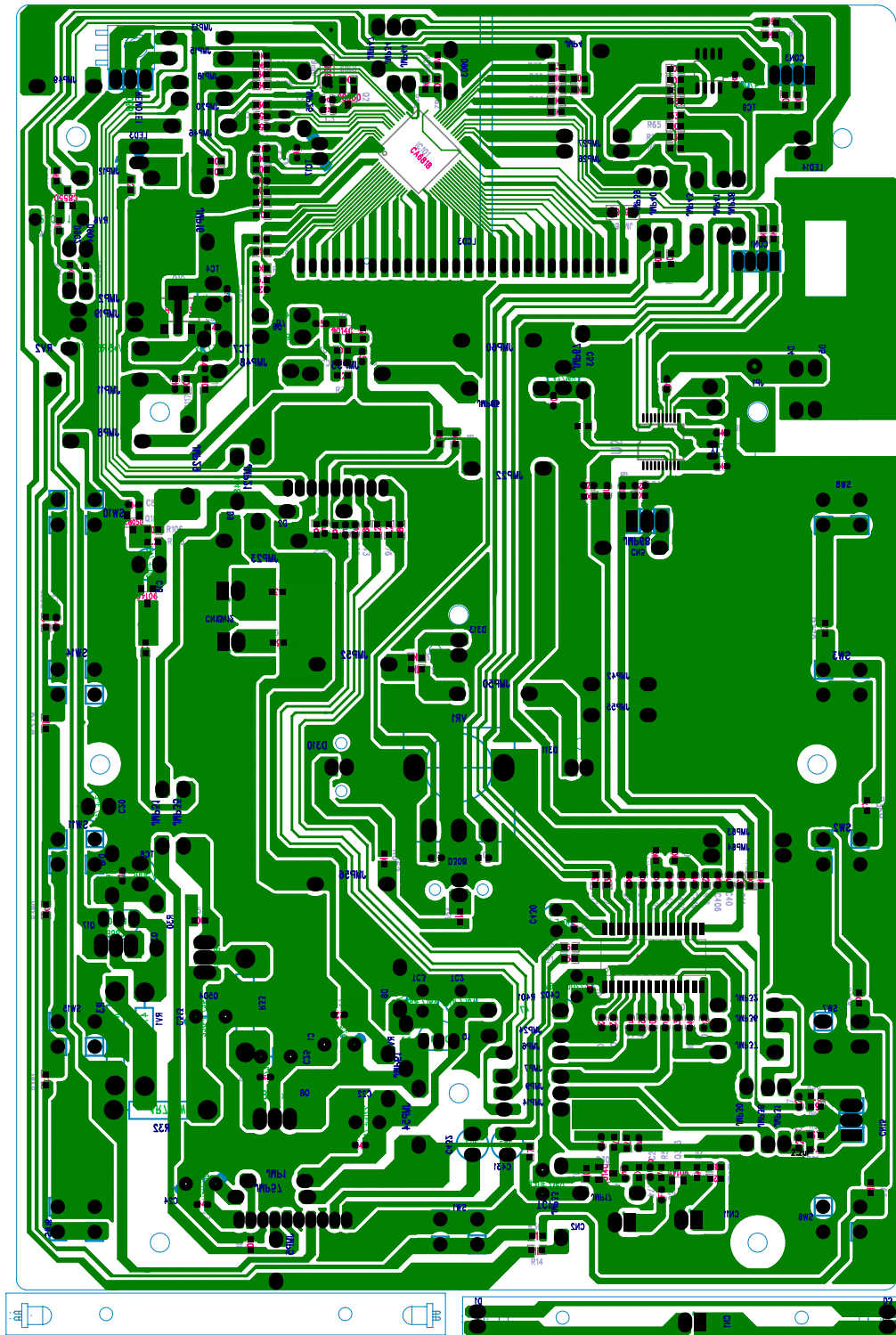


SAFETY TEST CIRCUIT

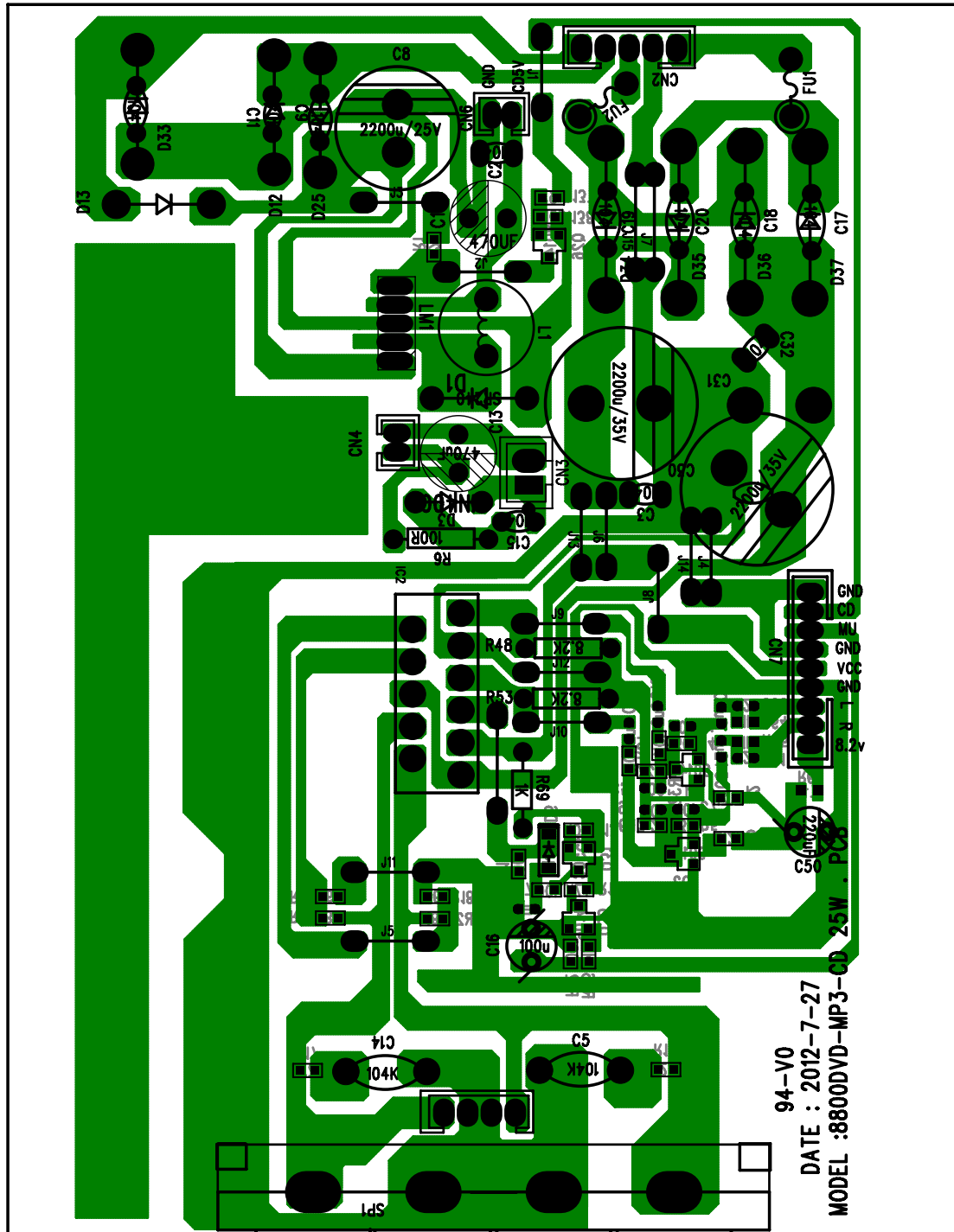


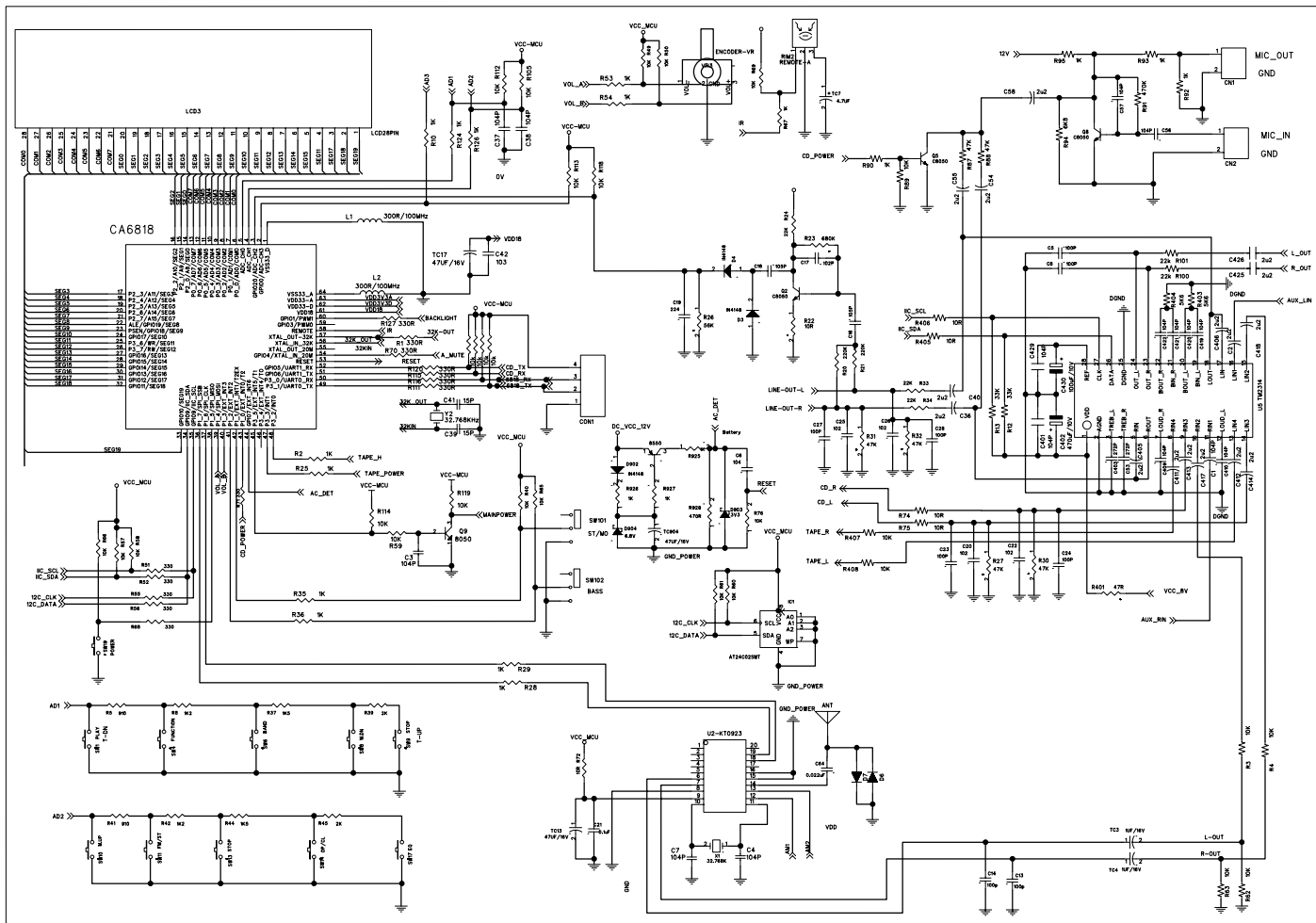
PCB. ALi5673/mic/aux/ 2usb

## Display.PCB

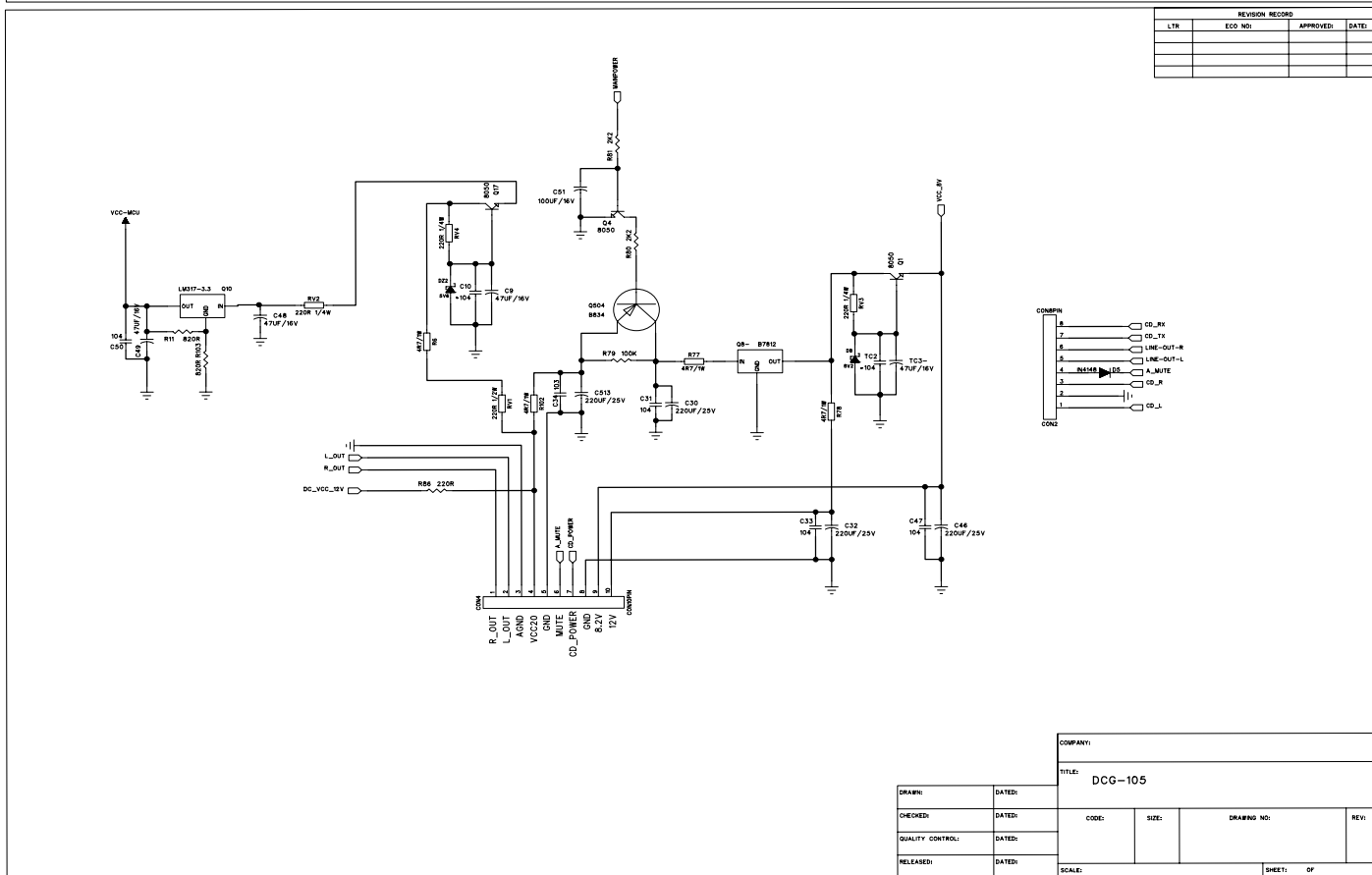


Power.PCB





REVISION RECORD			
LTR	ECO NO	APPROVED	DATE



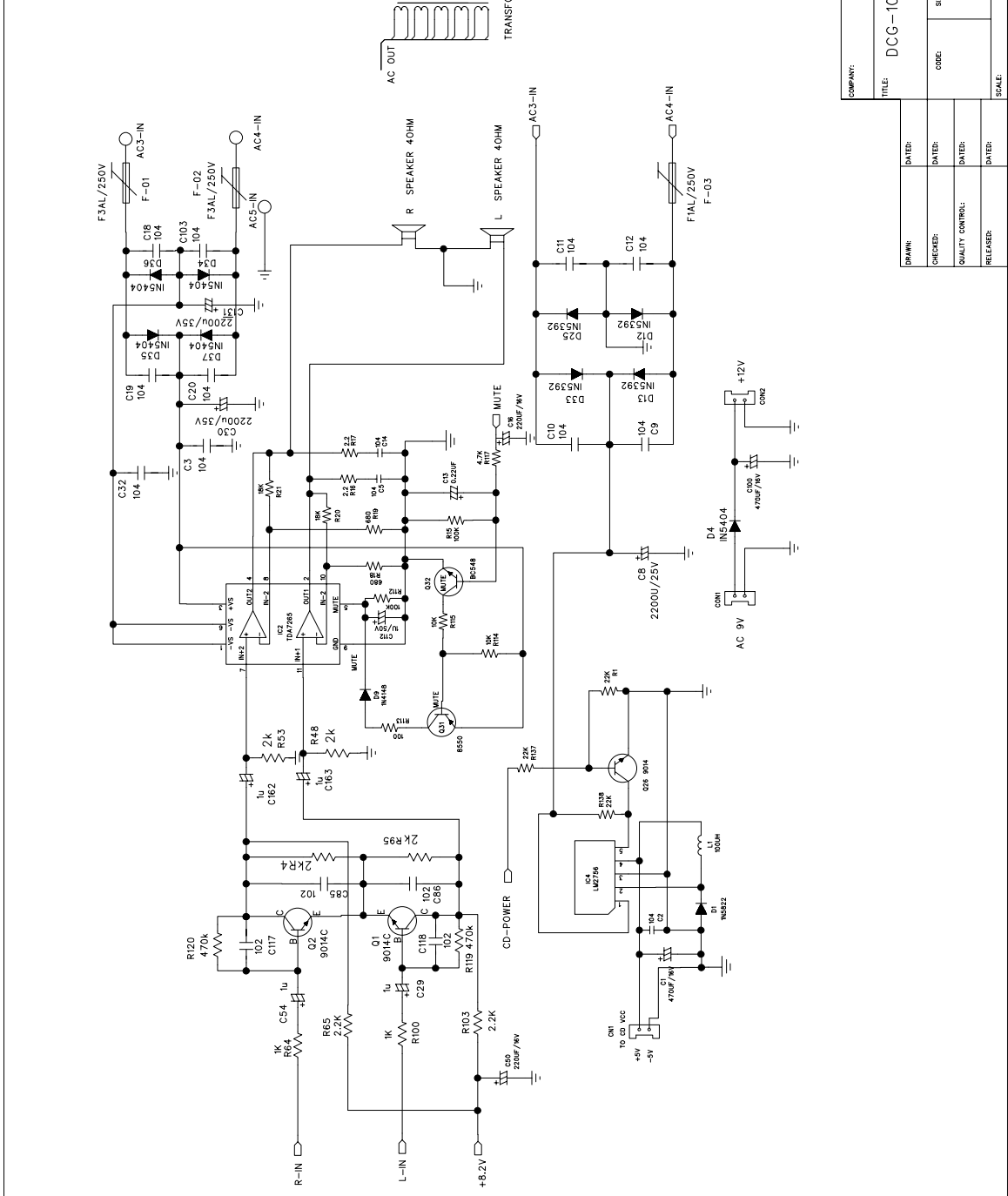
CONNECTION			
NO	DESCRIPTION	NO	DESCRIPTION
1	CON1	1	CON1
2	CON2	2	CON2
3	CON3	3	CON3
4	CON4	4	CON4
5	CON5	5	CON5
6	CON6	6	CON6
7	CON7	7	CON7
8	CON8	8	CON8
9	CON9	9	CON9
10	CON10	10	CON10

				COMPANY:							
				TITLE: DCG-105							
DRAWN:		DATED:									
CHECKED:		DATED:		CODE:		SIZE:		DRAWING NO:		REV:	
QUALITY CONTROL:		DATED:									
RELEASED:		DATED:		SCALE:				SHEET: 0F			

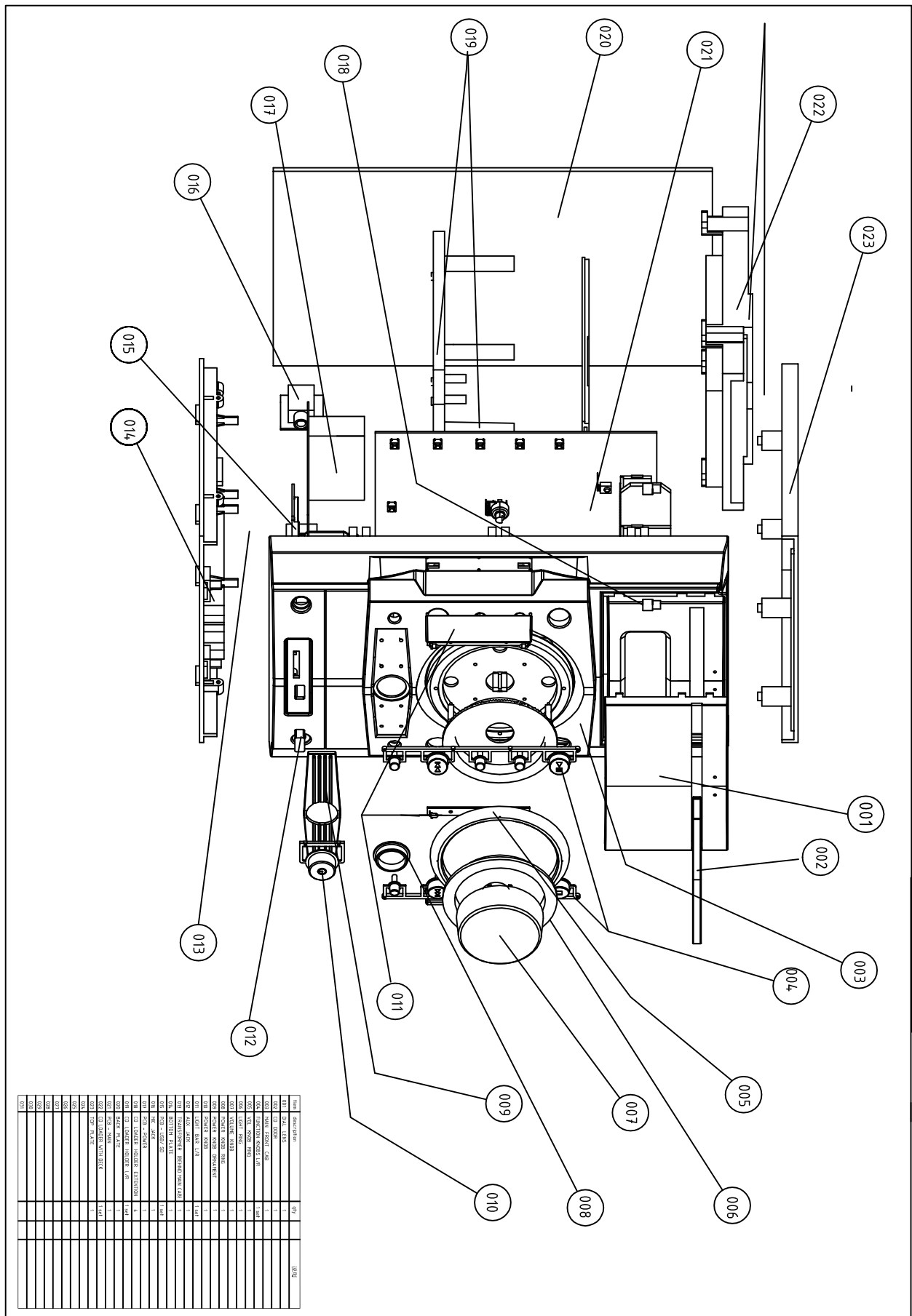




REVISION RECORD			
LTW	ECO NO.	APPROVED:	DATE



COMPANY:			
TITLE: DCG-105			
DRAWN:	DATED:	CODE:	SIZE:
CHECKED:	DATED:	QUALITY CONTROL:	REV:
RELEASED:	DATED:	SCALE:	SHEET: OF



## TROUBLE SHOOTING

Circuit	Symptom	Cause and Remedy
General	No sound	<ul style="list-style-type: none"> <li>• Speaker are not connected: Check the speaker connection.</li> <li>• Wrong function is selected: Set switch to the proper position.</li> <li>• Defective volume control: Set the volume control to a proper sound level.</li> <li>• Mute function is active: Release it by remote control.</li> </ul>
AM	No sound,weak sound (Low sensitivity)	<ul style="list-style-type: none"> <li>• AM antenna not connected Connect the external antenna and rotate it if necess</li> <li>• Intermediate Frequency tuning faulty: Readjust</li> <li>• RF tracking faulty: Readjust</li> <li>• Defective Tuner box Check voltages,Replace if necessary.</li> <li>• Poor contact in antenna circuit: Check resistance and resolder.</li> </ul>
FM	No sound,weak sound (Low sensitivity)	<ul style="list-style-type: none"> <li>• FM antenna not connected: Connect the built-in or external antenna.</li> <li>• Defective Tuner box Check voltages. Replace if necessary.</li> <li>• Intermediate Frequency tuning faulty: Readjust</li> <li>• Poor contact in FM antenna circuit: Resoled or repair as required.</li> </ul>
CD	Cannot read the table of contents, no display, no sound.	<ul style="list-style-type: none"> <li>• Disc is inserted upside down: Insert disc correctly.</li> <li>• Disc is dirty: Wipe clean with a soft cloth.</li> <li>• Disc is scratched: Use a new disc.</li> <li>• Disc is seriously warped: Use a new disc.</li> <li>• A non-standard disc has been inserted: Use only a brand name disc.</li> <li>• Moisture has formed inside the CD Pick-up Head: Wait about 20 to 30 minutes.</li> <li>• Defect in the servo control board: Replace or repair as required.</li> <li>• Defect in the picked mechanism: Replace as required.</li> </ul>