

Philco



**MINI
SYSTEM
PH800**

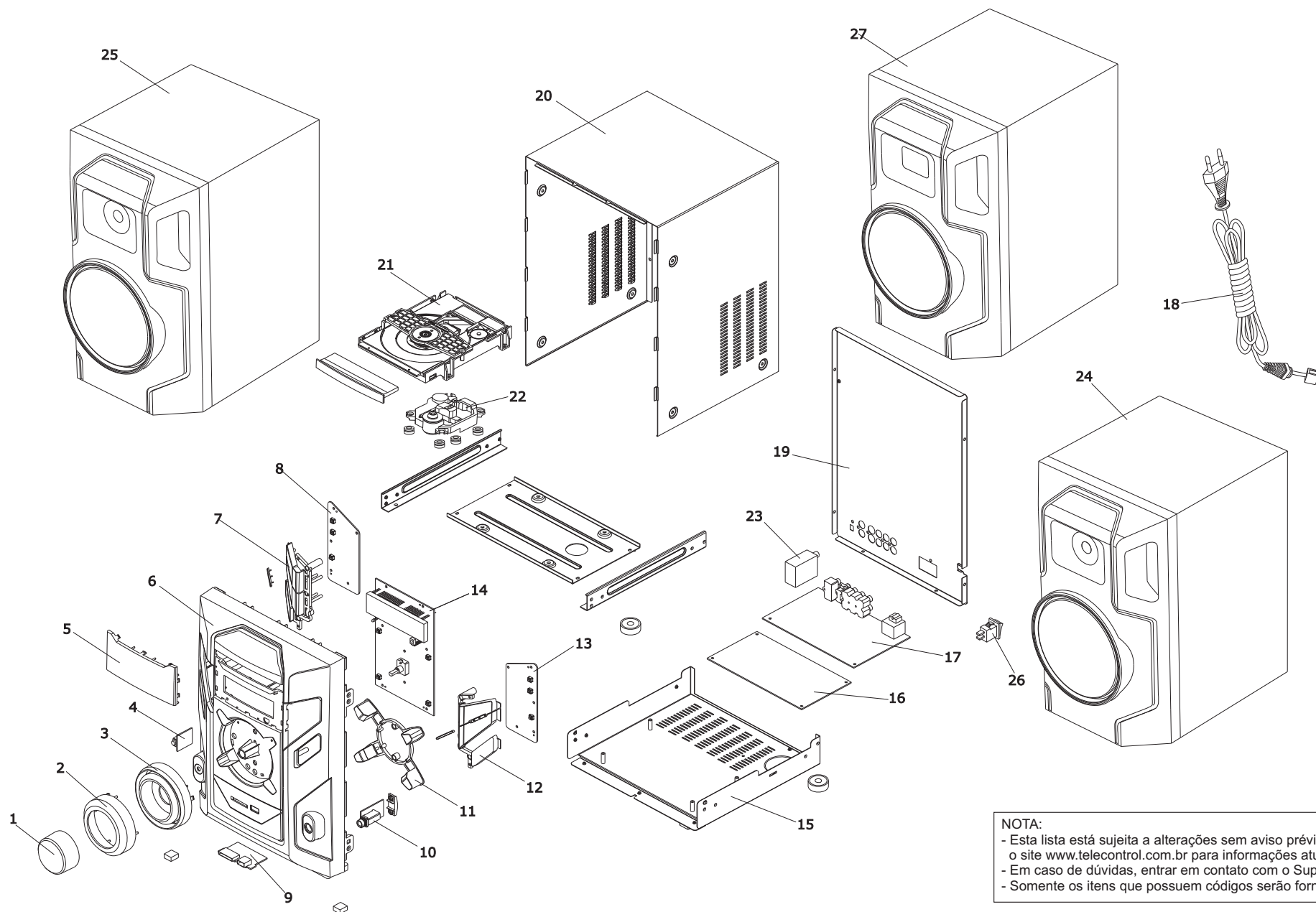
0800 415300

Suporte.tecnico@britania.com.br

VISTA EXPLODIDA

PRODUTO	CÓDIGO	TENSÃO	PADRÃO E N° SÉRIE
PH800	056603080ATX	BIV	0 00 00000 00 V088X

(X) - O último algarismo nas colunas "Código" e "Padrão N° Série" significa a versão do aparelho.



NOTA:

- Esta lista está sujeita a alterações sem aviso prévio, consultar o site www.telecontrol.com.br para informações atualizadas.
- Em caso de dúvidas, entrar em contato com o Suporte Técnico
- Somente os itens que possuem códigos serão fornecidos.

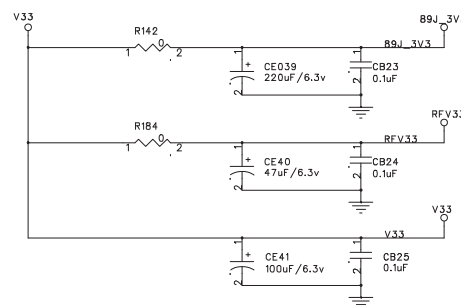
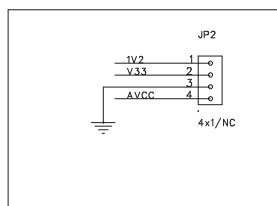
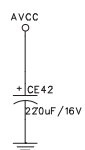
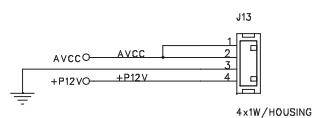
ITENS DA VISTA EXPLODIDA

Nº	Código	Descrição da Peça
1	709630	KNOB VOLUME PH650
2	709631	DECOR GRAFITE KNOB VOLUME PH650
3	709632	DECOR CINZA KNOB VOLUME PH650
4	709913	PCI JACK ENT AUX PH800
5	709636	LENTE DISPLAY PH650
6	709914	GAB FRONT PH800
7	709633	TECLA POWER/SOURCE/S.EFFECT PH650
8	709621	PCI TECLADO POWER/SOURCE/S.EFFECT
9	709625	PCI USB/SD/MS/MMC PH800
10	709624	PCI JACK MIC MICRO SYSTEM PH650
11	709635	TECLA SKIP/SEARCH PH650
12	709634	TECLA OPEN/PLAY/STOP PH650
13	709622	PCI TECLADO OPEN/PLAY/STOP
14	709912	PCI DISPLAY PH800
15	709638	GAB INF PH650
16	709911	PCI FONTE PH800
	712252	PCI FONTE PH800 V.B
17	709910	PCI PRINC PH800
	712249	PCI PRINC PH800 V.B
18	709628	CORD 2X0,5 1,5M PASSA FIO 8,0mm
19	709637	GAB TRAS PH650
	712253	GAB TRAS PH800 V.B
20	709639	GAB SUP PH650
21	709626	MEC DVD RYD-313AAM-2S
22	704892	UNID OTICA KHM313-AAA
24	709915	CX ACUST DIR PH800
	712023	CX ACUST DIR PH800 (COM TELA PROT)
	712254	CX ACUST DIR PH800 V.B
25	709916	CX ACUST ESQ PH800
	712024	CX ACUST ESQ PH800 (COM TELA PROT)
	712255	CX ACUST ESQ PH800 V.B
26	701902	CHAVE MASTER 8A220V 10A127V
27	709917	CX WOOFER PH800
	712025	CX WOOFER PH800 (COM TELA PROT)
	712256	CX WOOFER PH800 V.B

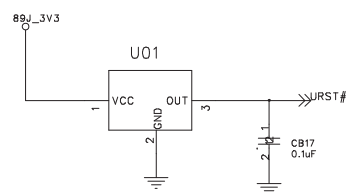
DEMAIS COMPONENTES FORNECIDOS

	Nº	Código	Descrição da Peça
PCI PRINCIPAL	U4	709438	CI MT1389DE-J (LQFP-128)(SMD)
	U5	709617	CI TAS5611 (S-PQFP-G64)(SMD)
	U1,U3,U8,U9	704478	CI 4558 (SOP-8)(SMD)
	U2	705616	CI HCF4052 (SOP-16)(SMD)
	U13	704993	CI D5888S (HSOP-28)(SMD)
	Q15,Q16	700102	TRANSISTOR B772.BD136(TO-126C)
	Q1	700105	TRANSISTOR S8050 (TO-92)(PTH)
	Q14	708664	TRANSISTOR 8550 (TO-92)(PTH)
	U14, U15	712250	CI TDA7498E (SSO-36)(SMD)
	Q14	712251	TRANSISTOR 3904 (TO-92)(PTH)
PCI FONTE	IC1	707235	CI VIPER22A (DIP-8)(PTH)
	IC2,IC6	701633	CI 817 OPTO (DIP-4)(PTH)
	T4,T5	706495	TRANSISTOR 2SC2235Y(TO-92MOD)(PTH)
	Q1	700105	TRANSISTOR S8050 (TO-92)(PTH)
	Q14	708664	TRANSISTOR 8550 (TO-92)(PTH)
	F1	709619	FUSIV RET VIDRO 5A250V 5X20mm
PCI DISPLAY	U1	702724	CI PT6311 (QFP-52)(SMD)
	Q1	700321	TRANSISTOR S8550 (TO-92)(PTH)
	VR1	706156	ENCODER VOL MSP200,210,PH200
ACESSÓRIOS E CABO FLAT	***	709627	CABO FLAT 24V 420mm P:0,5 NORMAL
	***	708684	CONTROLE REMOTO PH400 PH650 PH800
	***	708685	MICROFONE PRETO PHILCO
	***	704854	CABO/PLUGUE MICROFONE
	***	702065	CABO AUDIO E VIDEO 1,15M
	***	704196	ANTENA FM
	***	709642	ANTENA AM C CONECTOR
	***	709643	CONJ CALCO PH650 PH800
	***	705896	CERTIFICADO GARANTIA
	***	709895	CAIXA UNIT BIV AUDIO PH800
	***	709897	MANUAL AUDIO PH800

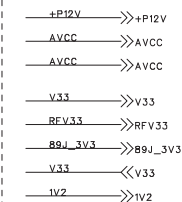
- 1 CIRCUITO POWER RESET
- 2 PROCESSADOR MT1389J
- 3 CIRCUITO MEMÓRIAS
- 4 SAÍDA DE ÁUDIO
- 5 RÁDIO, MIC, USB
- 6 CIRCUITO DISPLAY
- 7 CIRCUITO AMPLIFICADOR



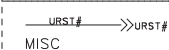
RESET Circuit



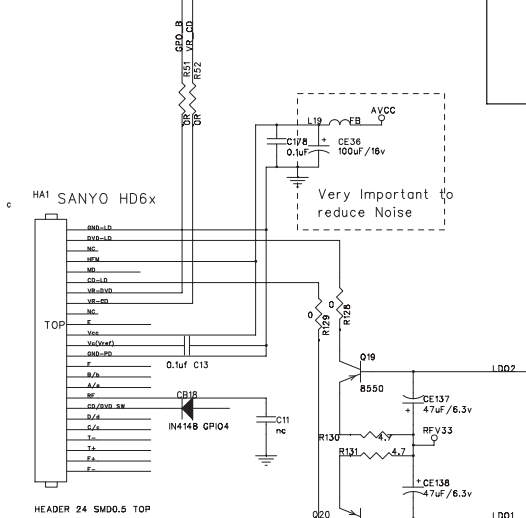
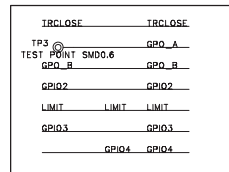
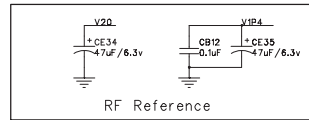
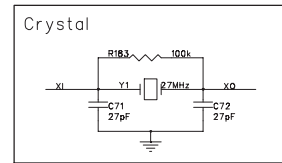
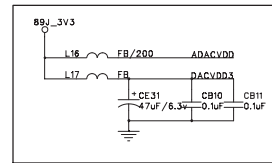
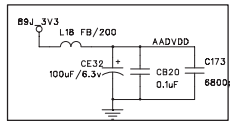
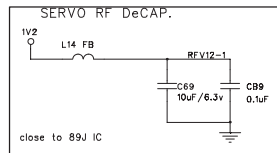
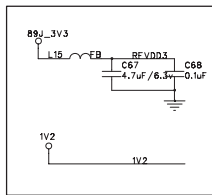
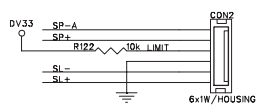
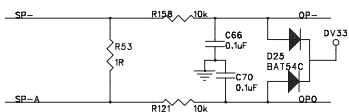
OFF-PAGE CONNECTION



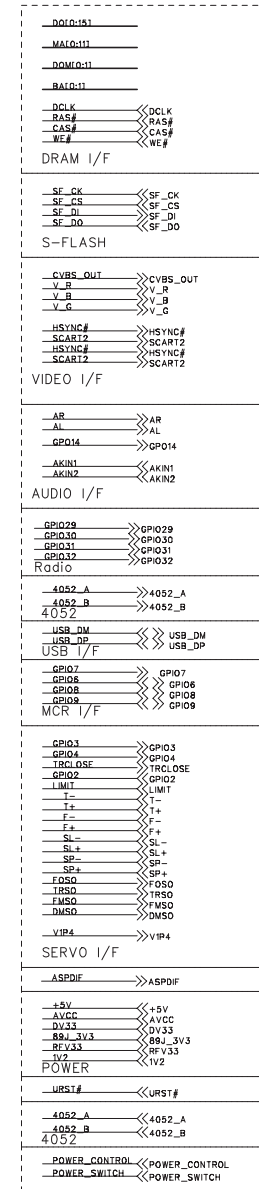
POWER



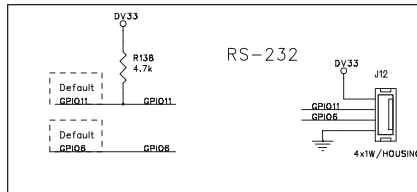
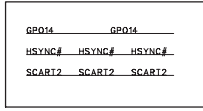
MISC

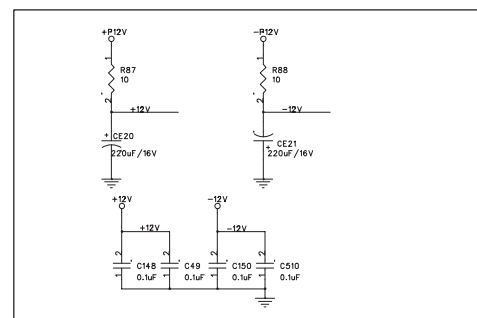
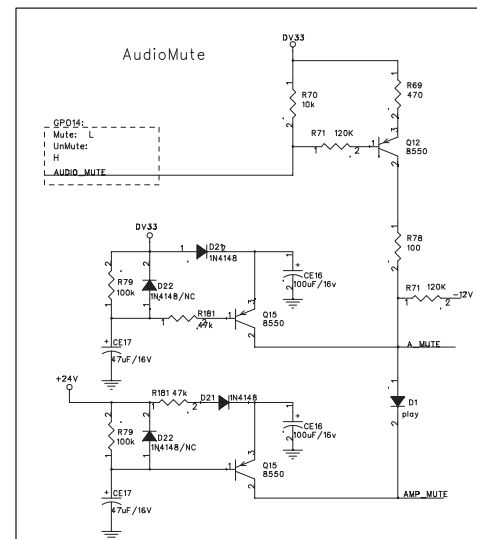
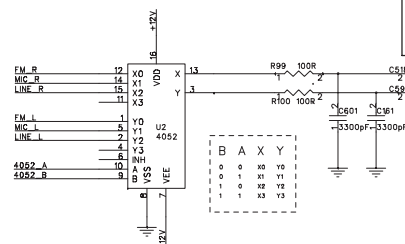
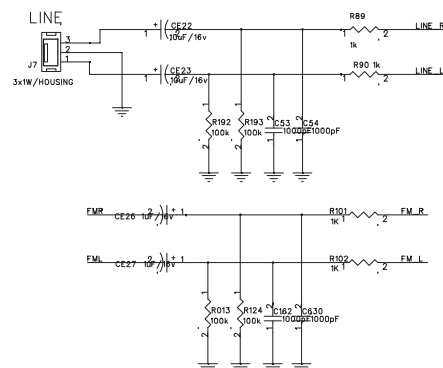
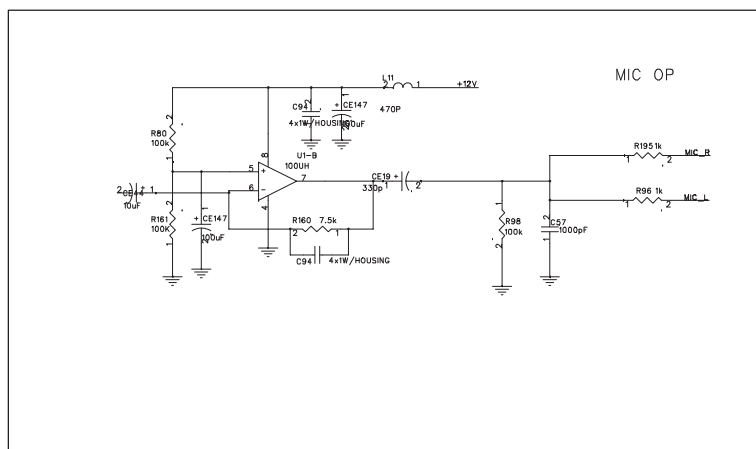
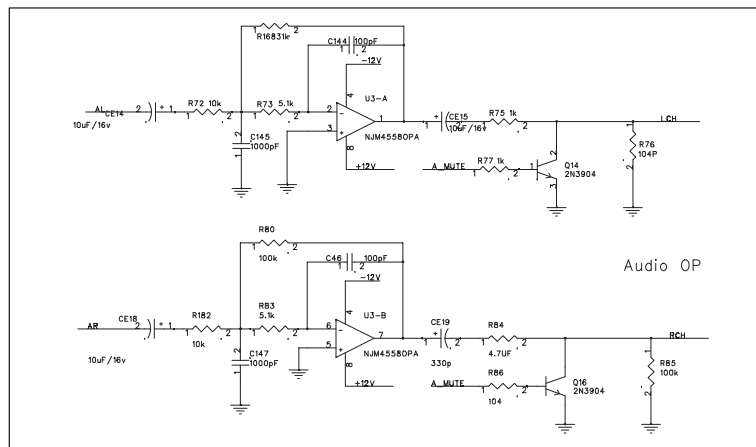


OFF-PAGE CONNECTION



MT1389J
No EPAD
LQFP 128
V1.0





OFF-PAGE CONNECTION

