

Service Guide Specification

1. Model Description

MODEL	T910BUK	BRAND	LG	Part No.	3828TSL076R
SUFFIX	KLEUQD	Product Name	FLATRONez T910BU		

답 당	관 리 자
PARK H.J 03.12.1	KIM O.K 03.12.1

2. Printing Specification

1. Trim Size (Format) : 215mm x 280 mm

2. Printing Colors

- Cover : LG COLORS
- Inside : Black

3. Stock (Paper)

- Cover : Snow White 150 g/m²
- Inside : Snow White 100 g/m²

4. Printing Method :

5. Bindery : Saddle stitch

6. Language : ENGLISH

7. Number of pages : 36 (Including blank 1page)

3. Special Instructions

(1) Origin Notification

- * LGEDI : Printed in Indonesia
- * LGESP : Printed in Brazil
- * LGENT : Printed in China

- * LGEWA : Printed in U.K.
- * LGEMX : Printed in Mexico
- * LGEIL : Printed in India

4. Changes

△ 8				
△ 7				
△ 6				
△ 5				
△ 4				
△ 3				
△ 2				
△ 1				
REV. NO.	MM/DD/YY	SIGNATURE	CHANGE NO.	CHANGE CONTENTS

Pagination sheet

P/N0.3828TSL076R

Total pages : 36pages

Cover	Front cover Inside Contents 2	English 3	English 4	English 5	English 	English 	English 28	English 29
	English 30		회로도 2절 2색 31		PCB 2절 33		Rear cover Inside (blank)	Back Cover



Website: <http://biz.LGservice.com>
E-mail: <http://www.LGEService.com/techsup.html>

COLOR MONITOR SERVICE MANUAL

CHASSIS NO. : CA-130

MODEL: FLATRON^{ez} T910BU (T910BUK-AL**Q, AL**E)
() **Same model for Service

CAUTION

BEFORE SERVICING THE UNIT,
READ THE **SAFETY PRECAUTIONS** IN THIS MANUAL.



*Same looking with new chassis

CONTENTS

SPECIFICATIONS	2	DESCRIPTION OF BLOCK DIAGRAM.....	9
SAFETY PRECAUTIONS	3	ADJUSTMENT	11
TIMING CHART	4	TROUBLESHOOTING GUIDE	13
OPERATING INSTRUCTIONS	5	EXPLODED VIEW	20
WIRING DIAGRAM	6	REPLACEMENT PARTS LIST	22
DISASSEMBLY	7	PIN CONFIGURATION	28
BLOCK DIAGRAM	8	SCHEMATIC DIAGRAM.....	31
		PRINTED CIRCUIT BOARD.....	33

SPECIFICATIONS

1. PICTURE TUBE

Size	: 19 inch (Flat Slot Mask)
Deflection Angle	: 90°
Neck Diameter	: 29.1 mm
Phosphor	: P22
Slot Pitch	: 0.25 mm
Face Treatment	: W-ARAS, Internal Anti-Glare
Function	: TCO 03, TCO99

2. SIGNAL

2-1. Horizontal & Vertical Sync

- 1) Input Voltage Level : Low= $\leq 0.8V$, High= $\geq 2.1V$
- 2) Sync Polarity : Positive or Negative

2-2. Video Input Signal

- 1) Voltage Level : 0 ~ 0.7 Vp-p
 - a) Color 0, 0 : 0 Vp-p
 - b) Color 7, 0 : 0.467 Vp-p
 - c) Color 15, 0 : 0.7 Vp-p
- 2) Input Impedance : 75 Ω
- 3) Video Color : R, G, B Analog
- 4) Signal Format : Refer to the Timing Chart

2-3. Signal Connector

15 Pin D-Sub Connector

2-4. Scanning Frequency

Horizontal	: 30 ~ 98 kHz
Vertical	: 50 ~ 160 Hz

3. POWER SUPPLY

AC 100~240V, 50/60HZ, 2.5A Max
AC 200~240V, 50Hz, 1.5A Max.(PFC version)

3-2. Power Consumption

MODE	VIDEO	POWER CONSUMPTION	LED COLOR
MAX	Yes	less than 120W	GREEN
STAND-BY	No	less than 8W	AMBER
SUSPEND	No	less than 8W	AMBER
DPMS OFF	No	less than 3W	AMBER

3-3. PFC: More than 0.72 at 230VAC

4. DISPLAY AREA

4-1. Active Video Area :

- Max Image Size - 365.8 x 274.3mm (12.91" x 9.61")
- Preset Image Size - 350 x 262 mm (12.20" x 9.06")

4-2. Display Color : Full Colors

4-3. Display Resolution : 1600 Dots x 1200Lines

4-4. Video Bandwidth : 203MHz

5. ENVIRONMENT

5-1. Operating Temperature: 0°C ~ 40°C (32°F ~ 103°)

5-2. Operating Humidity : 10% ~ 80%

5-3. Altitude(Operating) : 5,000m(Reliability)

6. DIMENSIONS (with TILT/SWIVEL)


Width	: 443 mm (17.44")
Depth	: 458 mm (18.03")
Height	: 450 mm (17.72")

7. WEIGHT (with TILT/SWIVEL)

Net Weight	: 20.9 kg (46.08 lbs)
Gross Weight	: 24.4 kg (53.79 lbs)

SAFETY PRECAUTIONS

SAFETY-RELATED COMPONENT WARNING!

There are special components used in this color monitor which are important for safety. ***These parts are marked  on the schematic diagram and the replacement parts list.*** It is essential that these critical parts should be replaced with the manufacturer's specified parts to prevent X-radiation, shock, fire, or other hazards. Do not modify the original design without obtaining written permission from manufacturer or you will void the original parts and labor guarantee.

CAUTION: No modification of any circuit should be attempted.

Service work should be performed only after you are thoroughly familiar with all of the following safety checks and servicing guidelines.

SAFETY CHECK

Care should be taken while servicing this color monitor because of the high voltage used in the deflection circuits. These voltages are exposed in such areas as the associated flyback and yoke circuits.

FIRE & SHOCK HAZARD

An isolation transformer must be inserted between the color monitor and AC power line before servicing the chassis.

- In servicing, attention must be paid to the original lead dress specially in the high voltage circuit. If a short circuit is found, replace all parts which have been overheated as a result of the short circuit.
- All the protective devices must be reinstalled per the original design.
- Soldering must be inspected for the cold solder joints, frayed leads, damaged insulation, solder splashes, or the sharp points. Be sure to remove all foreign materials.

IMPLOSION PROTECTION

All used display tubes are equipped with an integral implosion protection system, but care should be taken to avoid damage and scratching during installation. Use only same type display tubes.

X-RADIATION

The only potential source of X-radiation is the picture tube. However, when the high voltage circuitry is operating properly there is no possibility of an X-radiation problem. The basic precaution which must be exercised is keep the high voltage at the factory recommended level; the normal high voltage is about 27kV. The following steps describe how to measure the high voltage and how to prevent X-radiation.

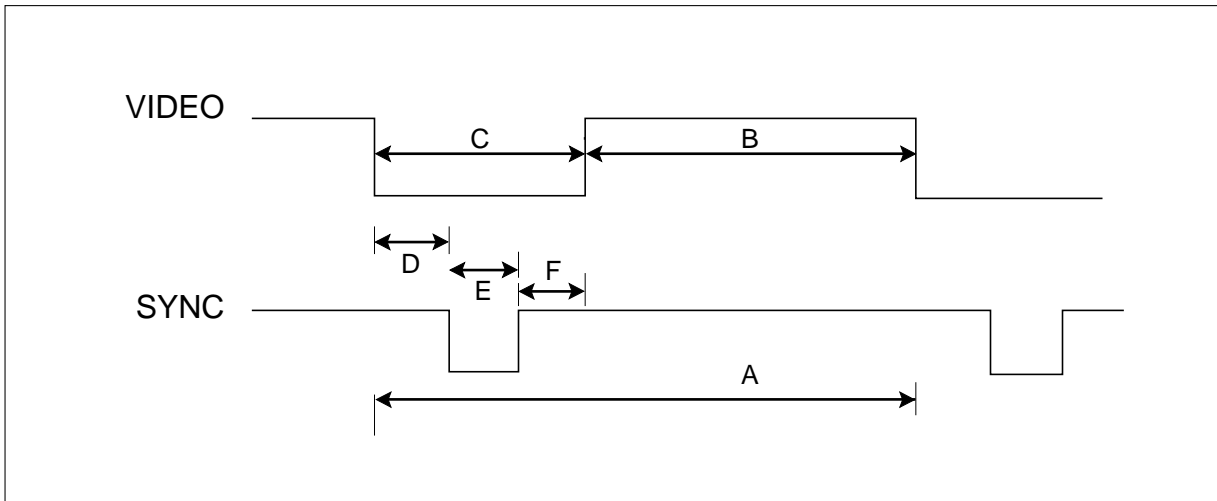
Note : It is important to use an accurate high voltage meter calibrated periodically.

- To measure the high voltage, use a high impedance high voltage meter, connect (–) to chassis and (+) to the CDT anode cap.
- Set the brightness control to maximum point at full white pattern.
- Measure the high voltage. The high voltage meter should be indicated at the factory recommended level.
- If the meter indication exceeds the maximum level, immediate service is required to prevent the possibility of premature component failure.
- To prevent X-radiation possibility, it is essential to use the specified picture tube.

CAUTION:

Please use only a plastic screwdriver to protect yourself from shock hazard during service operation.

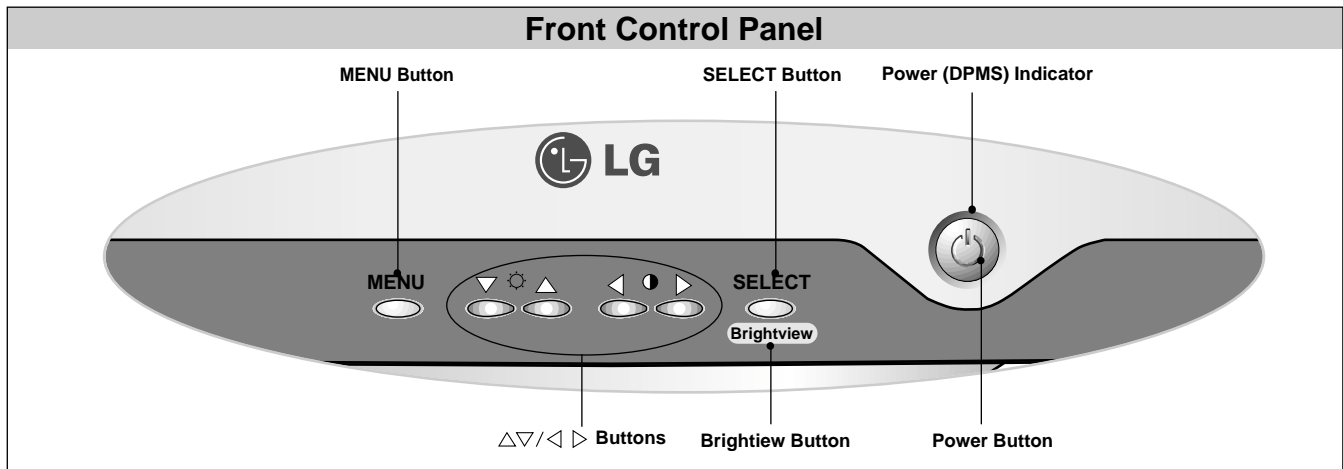
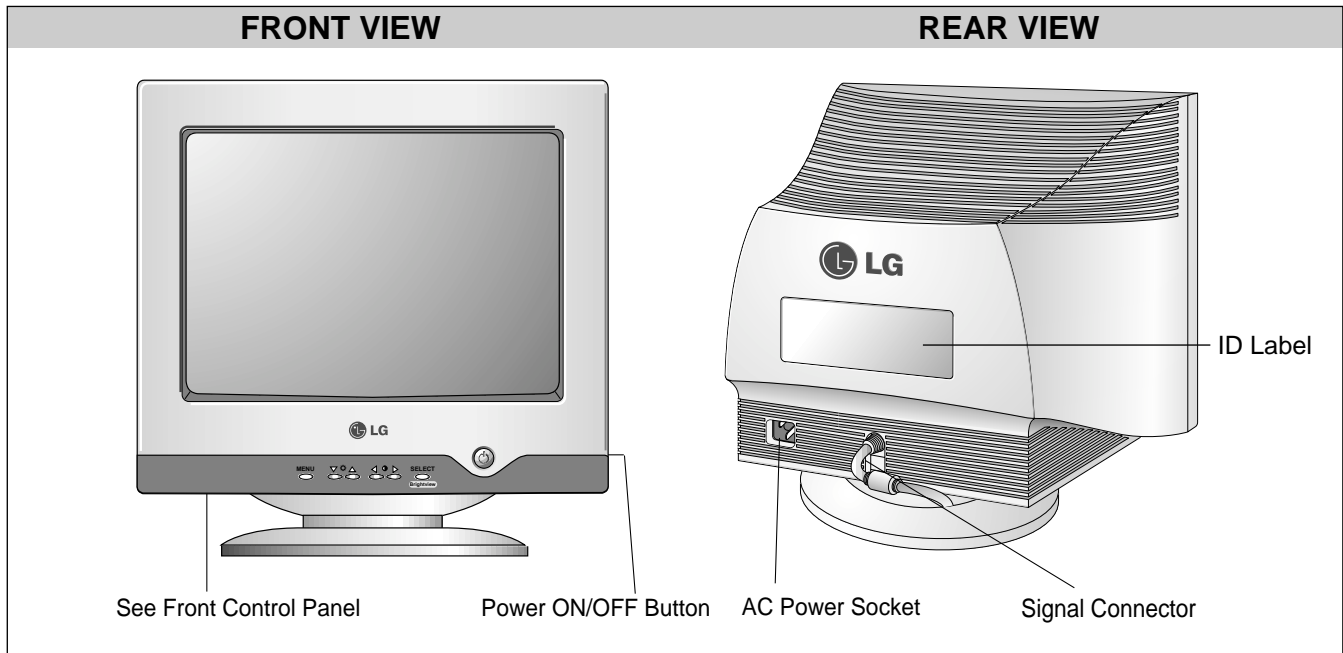
TIMING CHART



MODE			FACTORY PRESET MODE					
			MARK	MODE 1	MODE 2	MODE 3	MODE 4	MODE 5
				VESA				
H O R I Z O N T A L	Sync Polarity			—	+	+	+	+
	Frequency	kHz		43.269	53.674	68.677	91.146	93.750
	Total Period	μs	A	23.112	18.631	14.561	10.971	10.666
	Video Active Time	μs	B	17.778	14.222	10.836	8.127	7.901
	Blanking Time	μs	C	5.334	4.409	3.725	2.844	2.765
	Front Porch	μs	D	1.556	0.569	0.508	0.406	0.316
	Sync Duration	μs	E	1.556	1.138	1.016	1.016	0.948
	Back Porch	μs	F	2.222	2.702	2.201	1.422	1.501
V E R T I C A L	Sync Polarity			—	+	+	+	+
	Frequency	Hz		85.008	85.061	84.997	85.024	75.000
	Total Period	ms	A	11.763	11.756	11.765	11.762	13.333
	Video Active Time	ms	B	11.093	11.178	11.183	11.235	12.800
	Blanking Time	ms	C	0.670	0.578	0.582	0.527	0.533
	Front Porch	ms	D	0.023	0.019	0.015	0.011	0.011
	Sync Duration	ms	E	0.069	0.056	0.044	0.033	0.032
	Back Porch	ms	F	0.578	0.503	0.523	0.483	0.490
Resolution				640 X 480 85Hz	800 X 600 85Hz	1024 X 768 85Hz	1280 X 1024 85Hz	1600 X 1200 75Hz
Recall				Yes	Yes	Yes	Yes	

* Mode 5 is not preset mode but TCO check resolution!

OPERATING INSTRUCTIONS



1. Power ON/OFF Button

Use this button to turn the monitor ON or OFF.

2. Power Indicator

This indicator lights up green when the monitor operates normally; in DPMS (Energy Saving) mode, -stand-by, suspend, or power off mode - its color changes to orange, and if abnormal or damaging circuit turns out orange blink.

3. Select Button

Use this button to enter a selection in the on screen display.

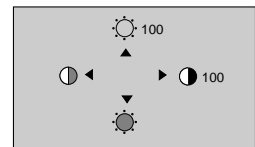
4. Δ▽/◀▶ Button

Use these buttons to choose or adjust items in the on screen display.

<Shortcut Keys>

- Brightness and Contrast can be adjusted directly without entering the On Screen Display (OSD) system.

Press the Δ▽/◀▶ buttons to adjust the settings and then the **MENU button** to save all changes. The Brightness and Contrast functions are also available in the On Screen Display (OSD) menu.



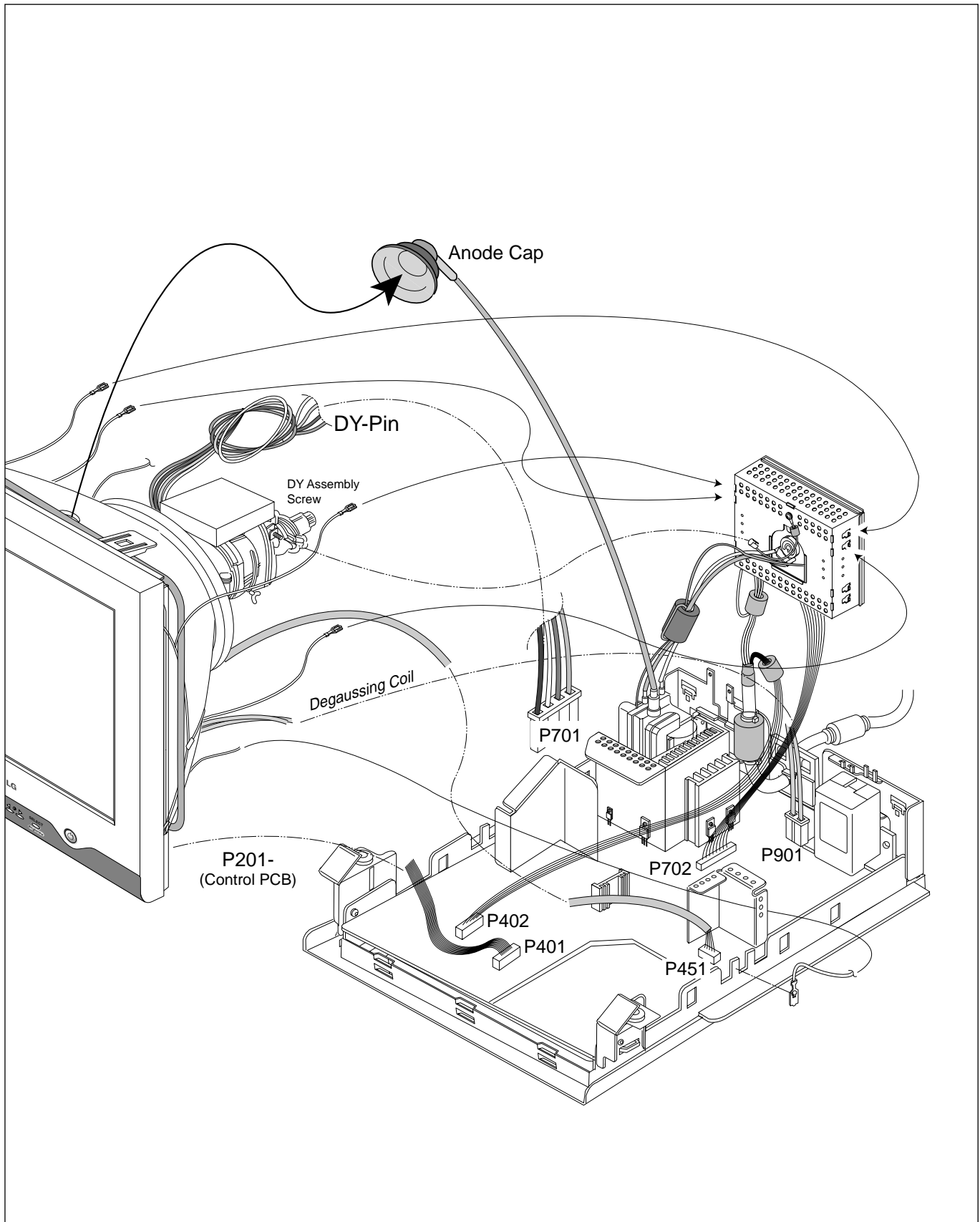
5. MENU Button

Use this button to enter or exit the on screen display.

6. Brightview Button

Use this button to select brightview function. (TEXT/PHOTO/MOVIE/NORMAL)

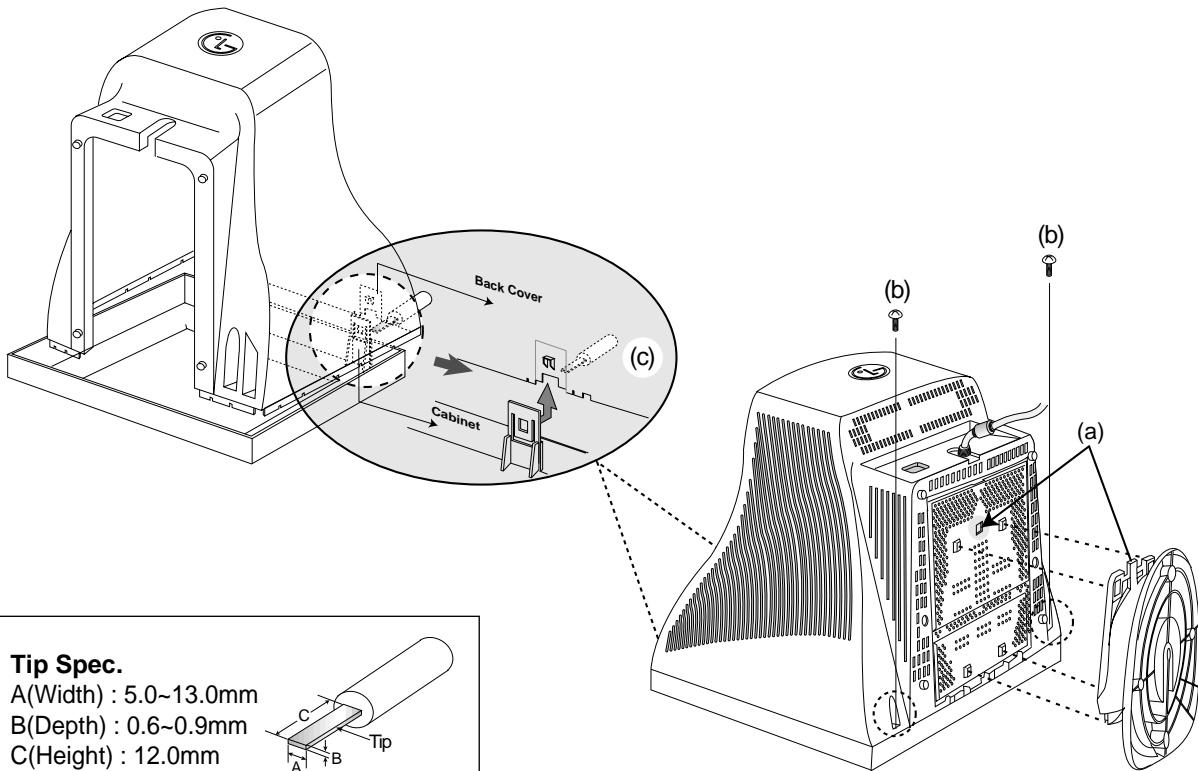
WIRING DIAGRAM



DISASSEMBLY

1. TILT/SWIVEL & BACK COVER REMOVAL

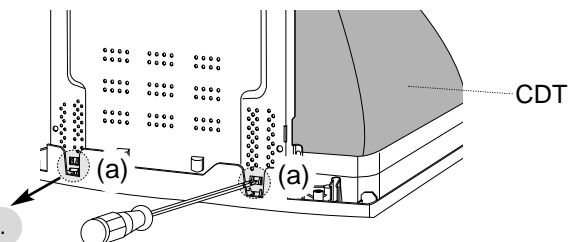
- 1) Set the monitor face downward.
- 2) Pull the latch (a), carefully remove the Tilt/Swivel by pulling it upward.
- 3) Remove two screws (b) .
- 4) Release the latch (c).
- 5) Slide the Back Cover away from the Front Cabinet of the monitor.



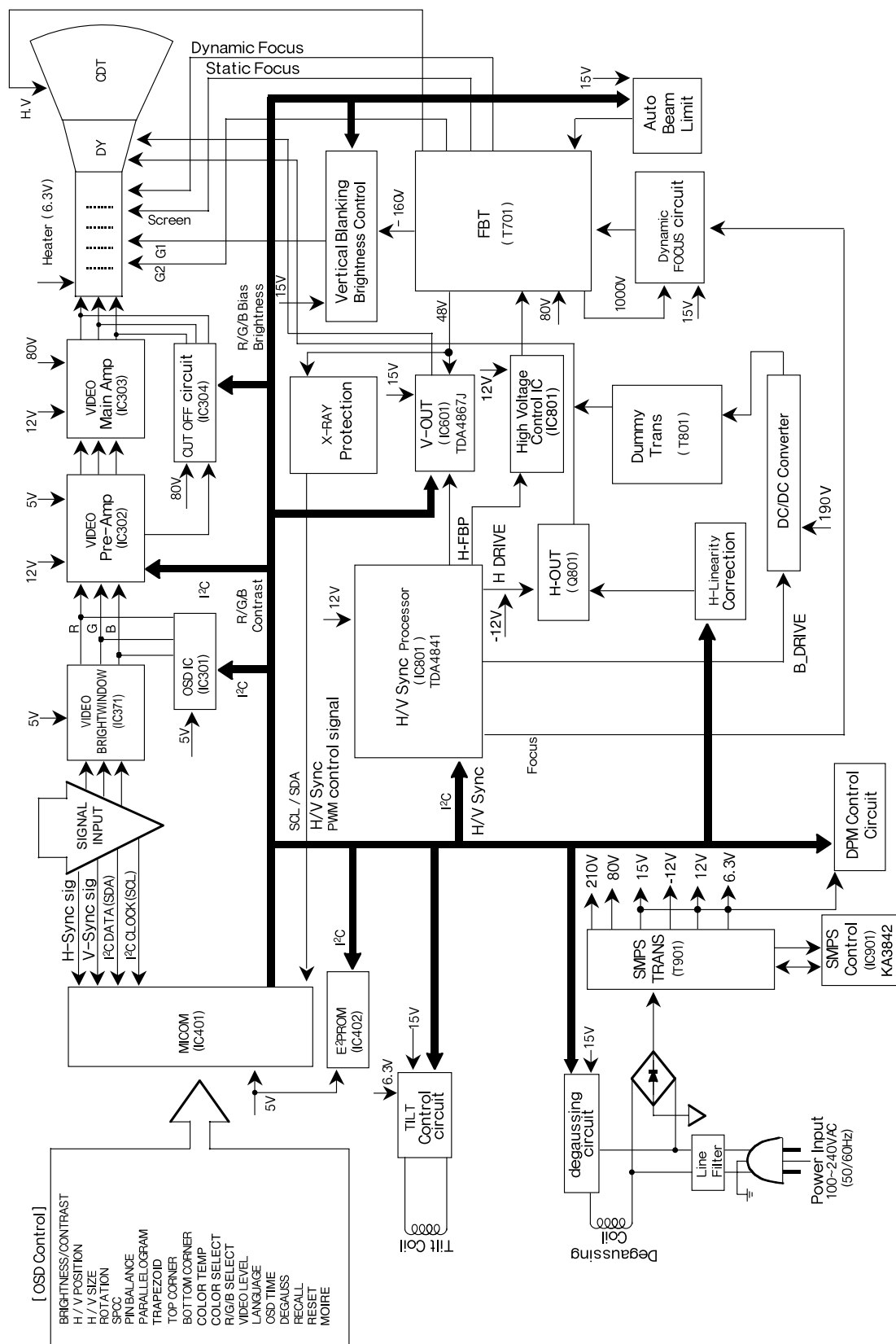
2. TOTAL CHASSIS ASSEMBLY REMOVAL

- 1) Set the monitor face downward.
- 2) Pressing the latch (a), Main Chassis by pushing it upward.

⚠ Please be careful, not to cut pattern.



BLOCK DIAGRAM



DESCRIPTION OF BLOCK DIAGRAM

1. Line Filter & Associated Circuit.

This is used for suppressing noise of power input line flowing into the monitor and/or some noise generated in this monitor flowing out through the power input line.

That is to say, this circuit prevents interference between the monitor and other electric appliances.

2. Degauss Circuit & Coil.

The degauss circuit consists of the degaussing coil, the PTC (Positive Temperature Coefficient) thermistor (TH901), and the relay (RL901). This circuit eliminates abnormal color of the screen automatically by degaussing the slot mask in the CDT when turn on the power switch.

When you need to degauss while using the monitor, select DEGAUSS on the OSD menu.

3. SMPS (Switching Mode Power Supply).

This circuit works with power of 100~240V or 200~240V (50/60Hz) specially for PFC version.

The operation procedure is as follows:

- 1) AC input voltage is rectified and smoothed by the bridge diode (D901) and the capacitor (C905).
- 2) The rectified voltage (DC voltage) is applied to the primary coil of the transformer (T901).
- 3) The control IC (IC901) generates switching pulse to turn on and off the primary coil of the transformer (T901) repeatedly.
- 4) Depending on the turn ratio of the transformer, the secondary voltages appear at the secondary coil of the transformer (T901).
- 5) These secondary voltages are rectified by each diode (D924, D926, D923, D929, D922, D921, D920) and operate the other circuits. (Deflection, Video Amplifier, etc.)

4. Display Power Management Circuit.

This circuit control power consumption of the monitor by detecting H and V sync signal. There are stand-by and suspend mode. When no horizontal or vertical sync signal input, the circuit consists of Q913, Q915 and IC401 control signal becomes stand-by and suspend mode. It's power consumption is below 8W. When no horizontal and vertical sync signal input, it's power consumption is below 1W.

5. X-ray Protection.

This circuit detects the rectified DC voltage comes from the FBT pin 4. If the high voltage of the FBT reaches up to about 30kV (abnormal state), H.V control (IC802) detects. It stops B⁺ voltage supplied to the FBT (T701), and high voltage is not be generated, (In the normal state, the high voltage is about 27kV.)

6. Micom(Microprocessor) Circuit.

The operating procedure of Micom (Microprocessor) and its associated circuit is as follows:

- 1) H and V sync signal is supplied from Signal Cable to the Micom (IC401).
- 2) The Micom (IC401) distinguishes polarity and frequency of H and V sync.
- 3) The Micom controls each OSD function signals. (H-size, H-position, V-size, etc.)
- 4) The controlled data of each mode is stored in IC402. User can adjust screen condition by each OSD function. The data of the adjust screen condition is stored automatically.

7. Horizontal and Vertical Synchronous Processor.

This circuit generates the horizontal drive pulse and the vertical drive pulse by taking sync-signal from Signal Cable. This circuit consists of the TDA4841(IC801) and the associated circuit.

8. Oscillating Circuit for D/D Converter.

This circuit generates the pulse wave which has the horizontal period by taking the output of the TDA4841(IC801).

9. D/D (DC to DC) Converter.

This circuit supplies DC voltage to the horizontal deflection output circuit by decreasing DC 210V which is the secondary voltage of the SMPS in accordance with the input horizontal sync signal.

10. D/D Drive & Convert Circuit.

This circuit is used for supplying B⁺ voltage to horizontal deflection output transistor (Q801).

11. Horizontal Deflection Output Circuit.

This circuit makes the horizontal deflection by supplying the saw-tooth current to the horizontal deflection yoke.

12. High Voltage Output & FBT (Flyback Transformer).

The high voltage output circuit is used for generating pulse wave to the primary coil of the FBT (Flyback Transformer (T701)). A boosted voltage (about 27kV) appears at the secondary of the FBT and it is supplied to the anode of the CDT.

And there are another output voltages such as the dynamic focus voltage.

13. H-Linearity Correction Circuit.

This circuit corrects the horizontal linearity for each horizontal sync frequency.

14. Vertical Output Circuit.

This circuit takes the vertical wave from the TDA4841(IC801) and performs the vertical deflection by supplying the saw-tooth wave current from the TDA4867J (IC601) to the vertical deflection yoke.

15. Dynamic Focus Output Circuit.

This circuit takes H and V parabola wave from the TDA4841(IC801), and amplifies these waves to offer to the FBT (T701).

16. H & V Blanking and Brightness Control.

This circuit eliminates the retrace line by supplying a negative pulse to the G1 of the CDT.

17. Image Rotation (Tilt) Circuit.

This circuit corrects the tilt of the screen by supplying the image rotation signal to the tilt coil which is attached to the CDT near the deflection.

18. Static Convergence Control Circuit.

This circuit corrects the convergence of the screen by supplying the convergence signal to the 4H (STC) coil which is attached to the CDT near the deflection.

19. Moire Reduction Circuit

This circuit reduce interference between the periodical display pattern and the CDT's slot (or dot).

The positions of every other one dot video signal beams (red, green, and blue beam) are shifted finely, thus reducing interference.

20. OSD Circuit.

This circuit is used for performing the OSD (On-Screen- Display) function.

When a user selects the OSD Select/Adjustment control, the adjustment status displays on the screen.

21. Video Bright-Window Circuit.

This circuit amplifies the analog video signal from 0-0.7V to 0-0.9V when it was operated by PC Bright Window program. With each input being separately controlled by it's own contrast to allow luminance differentiation between inside and outside Window Video. When a user select Bright-window icon and drag his mouse to the special point of screen that window is highbrihted by window highlight function.

22. Video Pre-Amp Circuit.

This circuit amplifies the analog video signal from 0-0.7V to 0-4V. This circuit is operated by taking the clamp, R, G, B drives, and contrast signals from the Micom (IC401).

23. Video Output Amp Circuit.

This circuit amplifies the video signal which comes from the video pre-amp circuit and amplified video signal is applied to the CDT cathode.

ADJUSTMENT

GENERAL INFORMATION

All adjustment are thoroughly checked and corrected when the monitor leaves the factory, but sometimes several adjustments may be required.

Adjustment should be following procedure and after warming up for a minimum of 30 minutes.

- Alignment appliances and tools.
 - IBM compatible PC.
 - Programmable Signal Generator.
(eg. VG-819 made by Astrodesign Co.)
 - EPROM or EEPROM with saved each mode data.
 - Alignment Adaptor and Software.
 - Digital Voltmeter.
 - White Balance Meter.
 - Luminance Meter.
 - High-voltage Meter.

AUTOMATIC AND MANUAL DEGAUSSING

The degaussing coil is mounted around the CDT so that automatic degaussing when turn on the monitor. But a monitor is moved or faced in a different direction, become poor color purity cause of CDT magnetized, then press DEGAUSSING on the OSD menu.

ADJUSTMENT PROCEDURE & METHOD

- Install the cable for adjustment such as Figure 1 and run the alignment program on the DOS for IBM compatible PC.
- Set external Brightness and Contrast volume to max position.

1. Adjustment for B⁺ Voltage.

- 1) Display cross hatch pattern at Mode 4.
- 2) Adjust P905 voltage to 210V \pm 0.2V with **VR901**.

2. Adjustment for High-Voltage.

- 1) Display cross hatch pattern at Mode 4.
- 2) Adjust CDT Anode voltage to 27kV \pm 0.2kV with **VR801**.

3. Adjustment for Factory Mode (Preset Mode).

- 1) Display cross hatch pattern at Mode All.
- 2) Run alignment program for T910BUK on the IBM compatible PC.

- 3) EEPROM \rightarrow ALL CLEAR \rightarrow Y(Yes) command.

<Caution> Do not run this procedure unless the EEPROM is changed. All data in EEPROM (mode data and color data) will be erased.

- 4) COMMAND \rightarrow PRESET START \rightarrow Y(Yes) command.
- 5) DIST. ADJ. \rightarrow FOS. ADJ command.
- 6) Adjust H-POSITION as arrow keys to center of the screen.
- 7) Adjust H-SIZE as arrow keys to 350 \pm 2mm.
- 8) Adjust V-POSITION as arrow keys to center of the screen.
- 9) Adjust V-SIZE as arrow keys to 262 \pm 2mm.
- 10) Adjust TRAPEZOID as arrow keys to be the best condition.
- 11) Adjust SIDE PINCUSHION as arrow keys to be the best condition.
- 12) Adjust TILT as arrow keys to be the best condition.
- 13) Display cross hatch pattern at Mode 4.
- 14) DIST. ADJ. \rightarrow BALANCE DATA command.
- 15) Adjust balance of Pin-Balance as arrow keys to be the best condition.
- 16) Adjust parallelogram as arrow keys to be the best condition.
- 17) Save of the Mode.
- 18) Save of the System.
- 19) Display from Mode 4 and repeat above from number 6) to 16).
- 20) COMMAND \rightarrow PRESET EXIT \rightarrow Y (Yes) command.

4. Adjustment for White Balance and Luminance.

- 1) Set the White Balance Meter.
- 2) Press the DEGAUSSING on the OSD menu for demagnetization of the CDT.
- 3) Display color 0,0 pattern at Mode 4.
- 4) COMMAND \rightarrow PRESET START \rightarrow Y(Yes) command.
- 5) Set Brightness and Contrast to max position.
- 6) COLOR ADJ. \rightarrow LUMINANCE command of the alignment program.
- 7) COLOR ADJ. \rightarrow BIAS ADJ. command of the alignment program.
- 8) Check whether blue color or not at R-BIAS and G-BIAS to min position, Sub-Brightness to (95:HEX(5F)) position, B-BIAS to 90: HEX(5A) position. If it's not blue color, the monitor must repair.
- 9) Adjust Screen control on the FBT to 0.15 \pm 0.05FL of the raster luminance.
- 10) Adjust R-BIAS and G-BIAS command to x=0.283 \pm 0.006 and y=0.298 \pm 0.006 on the White Balance Meter with PC arrow keys.

- 11) Adjust SUB-Brightness command to 0.4 ± 0.05 FL of the raster luminance.
- 12) Display color 15,0 Full White pattern(70x70mm) at mode 4.
- 13) DRIVE ADJ command.
- 14) Set B-DRIVE to 92:HEX(5C) at DRIVE of the alignment program.
- 15) Adjust R-DRIVE and G-DRIVE command to white balance $x=0.283 \pm 0.003$ and $y=0.298 \pm 0.003$ on the White Balance Meter with PC arrow keys.
- 16) Adjust SUB-CONTRAST command to 45 ± 1 FL of the raster luminance.
- 17) Display color 15,0 full white patten at Mode 4.
- 18) COLOR ADJ. → LUMINANCE → ABL command.
- 19) Adjust ABL to 30 ± 1 FL of the luminance.
- 20) Exit from the program.

5. Input EDID Data.

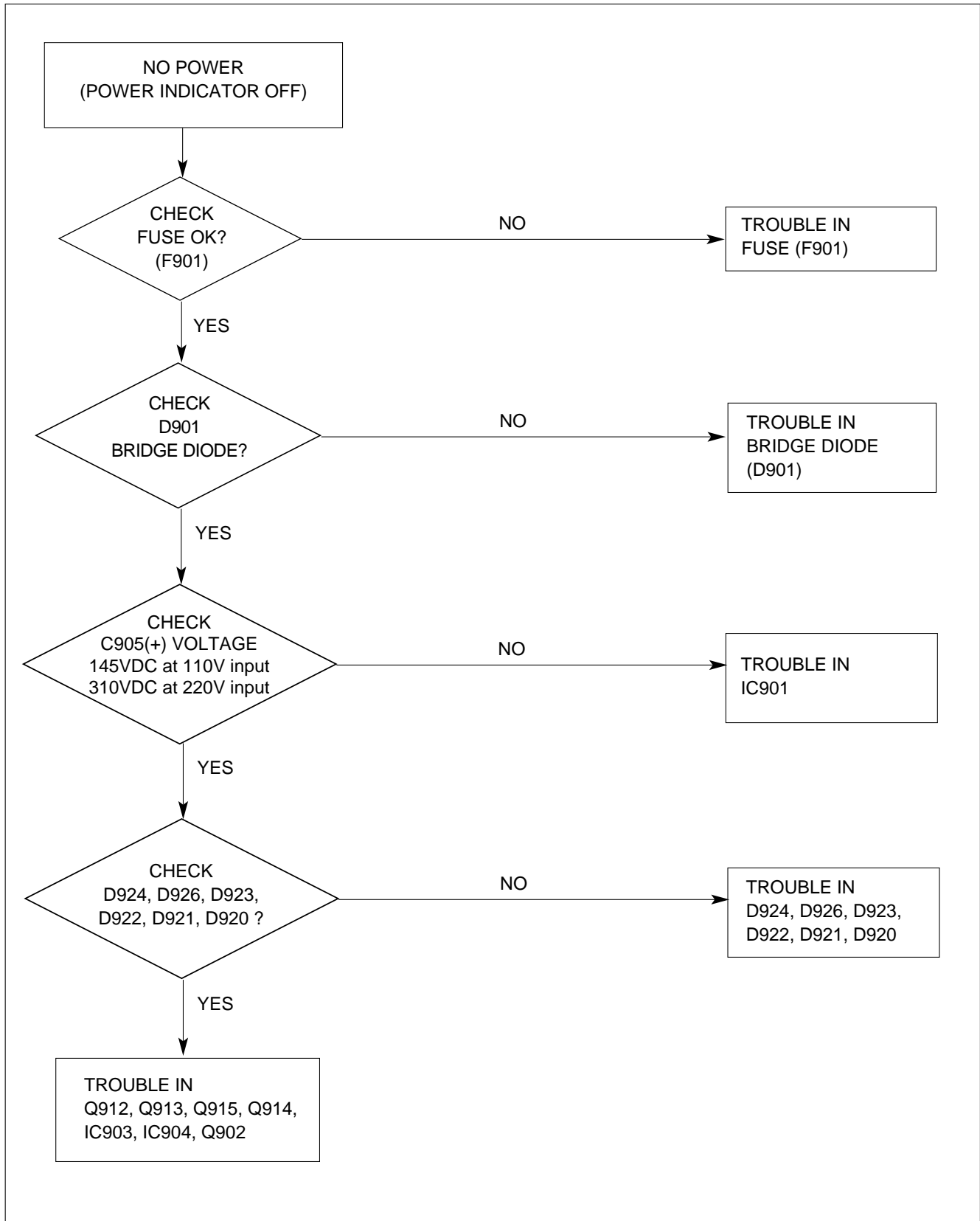
- 1) Display color 15,0 cross hatch pattern at Mode 4.
- 2) EEPROM → Write EDID command and confirm "EDID Write OK!!" message of monitor.
- 3) Exit from the alignment program.
- 4) Power switch OFF/ON for EDID data save.

6. Adjustment for Focus.

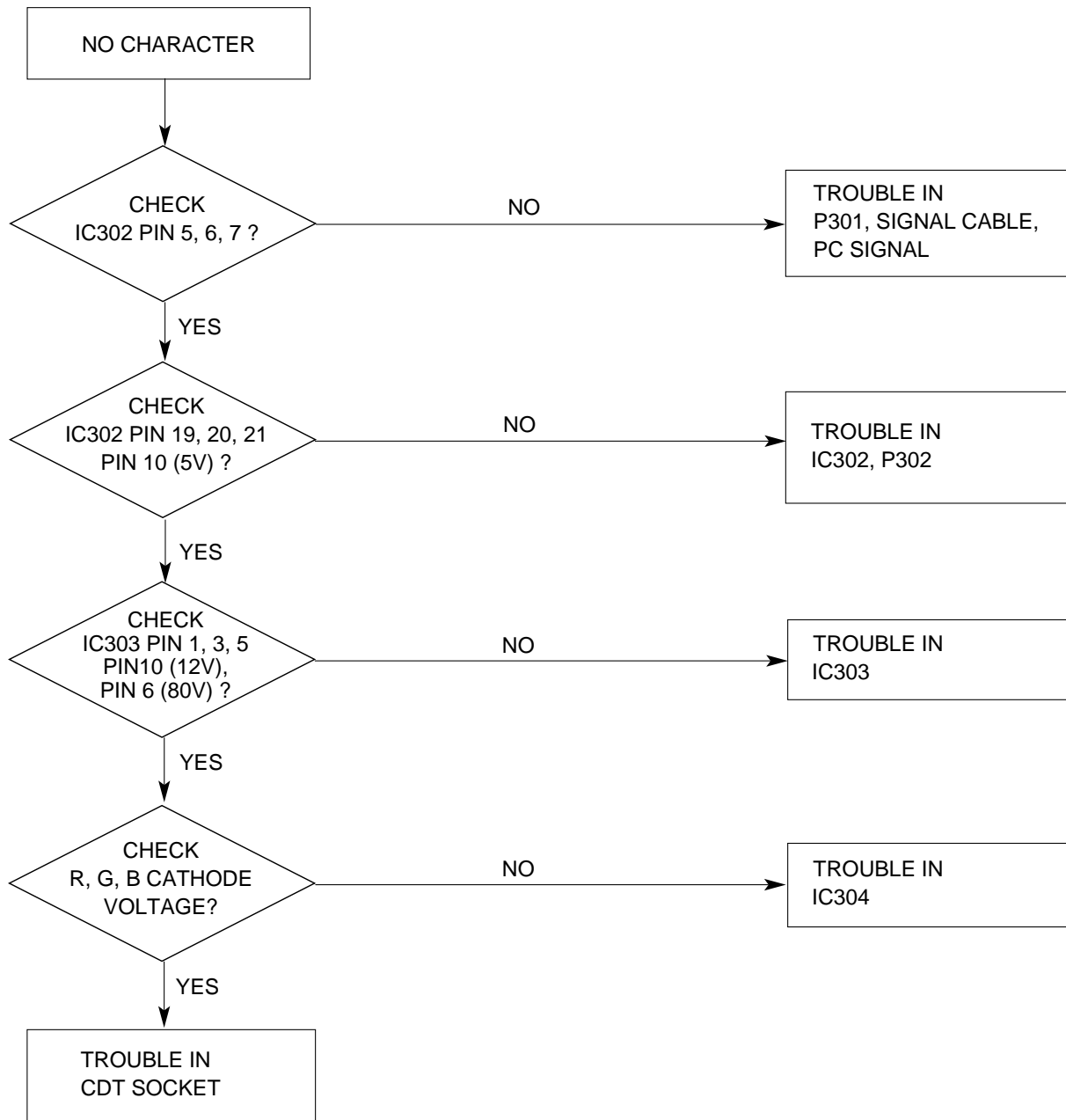
- 1) Display H character in full screen at Mode 4.
- 2) Adjust two Focus control on the FBT that focus should be the best condition.

TROUBLESHOOTING GUIDE

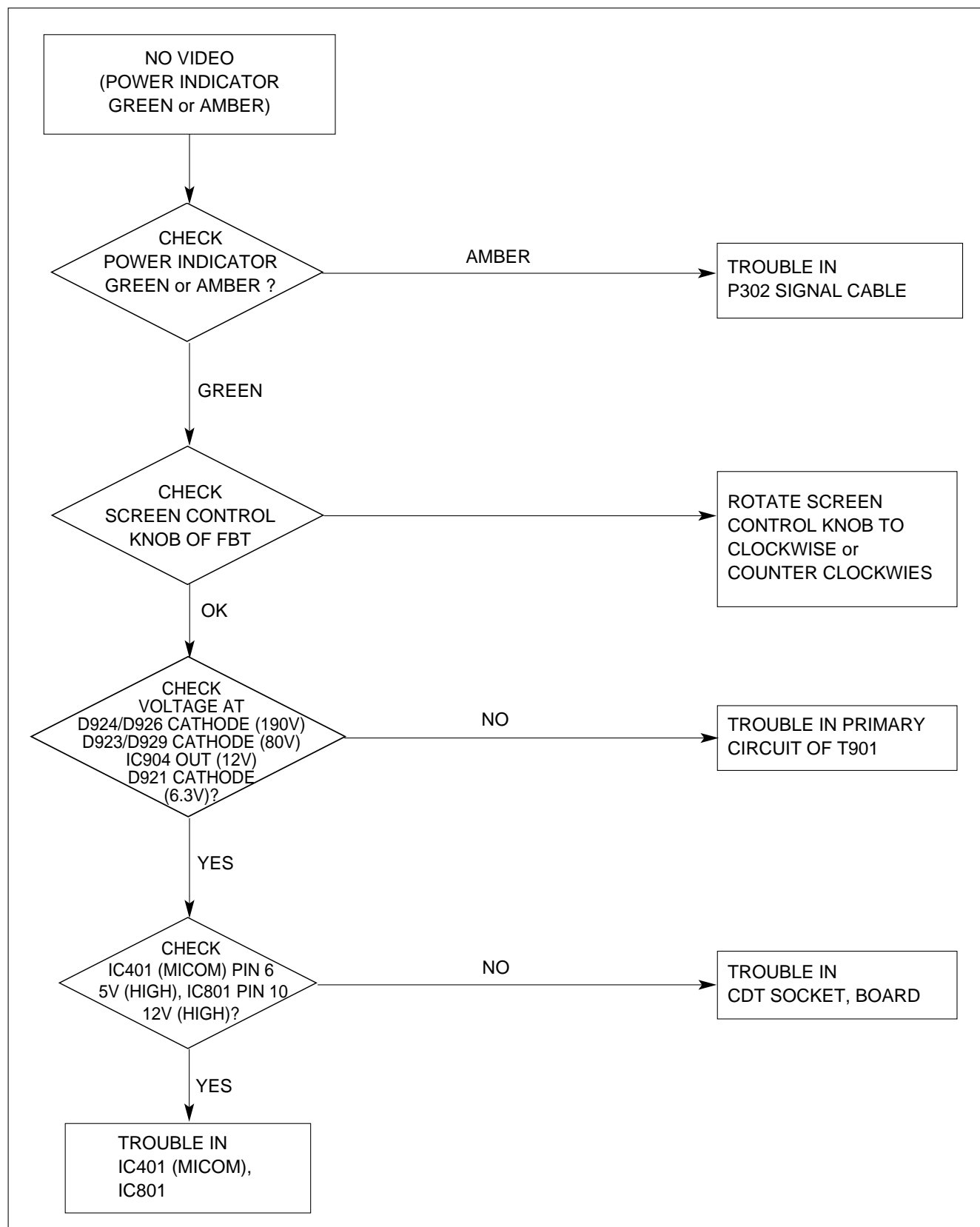
1. NO POWER



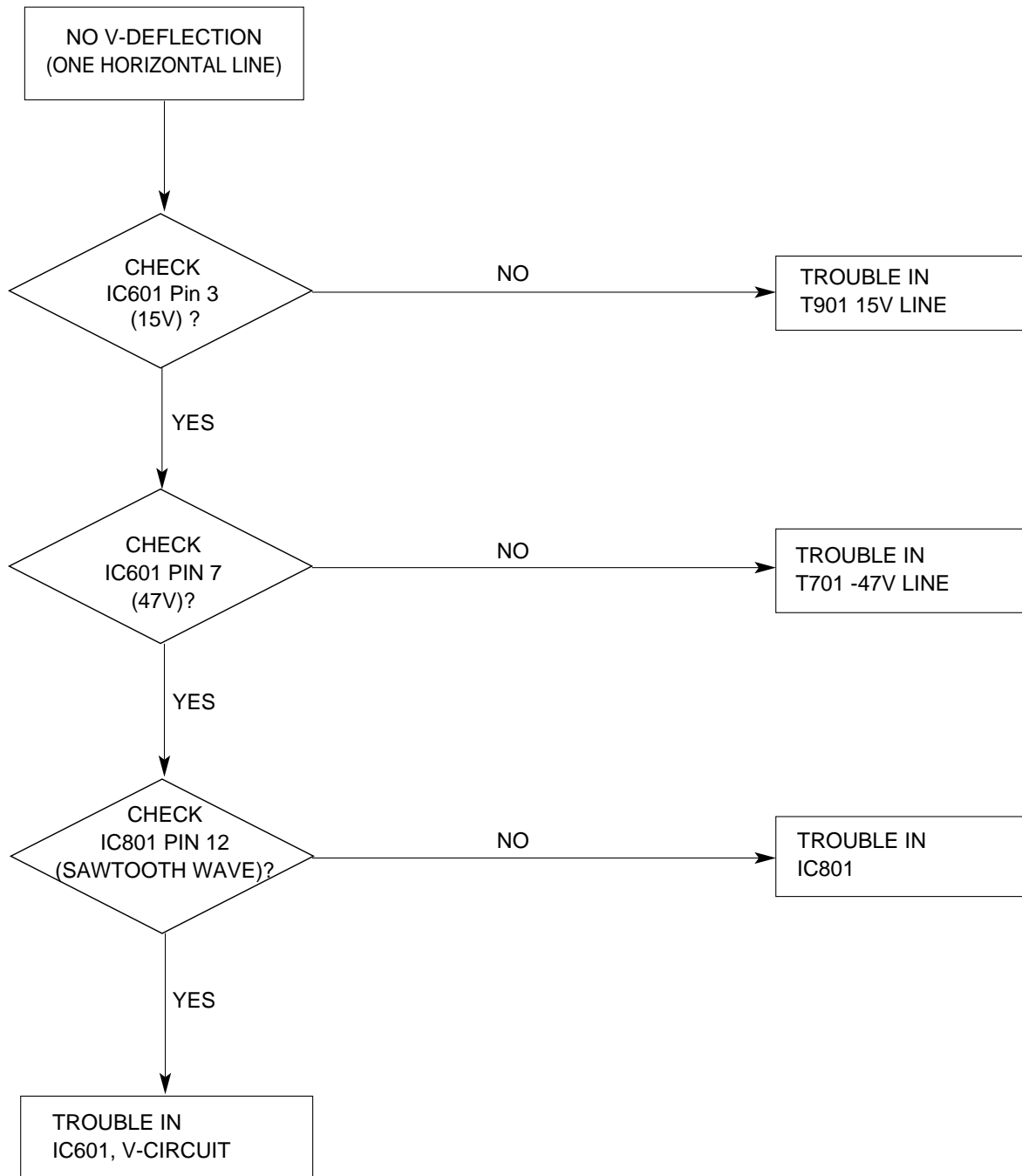
2. NO CHARACTER



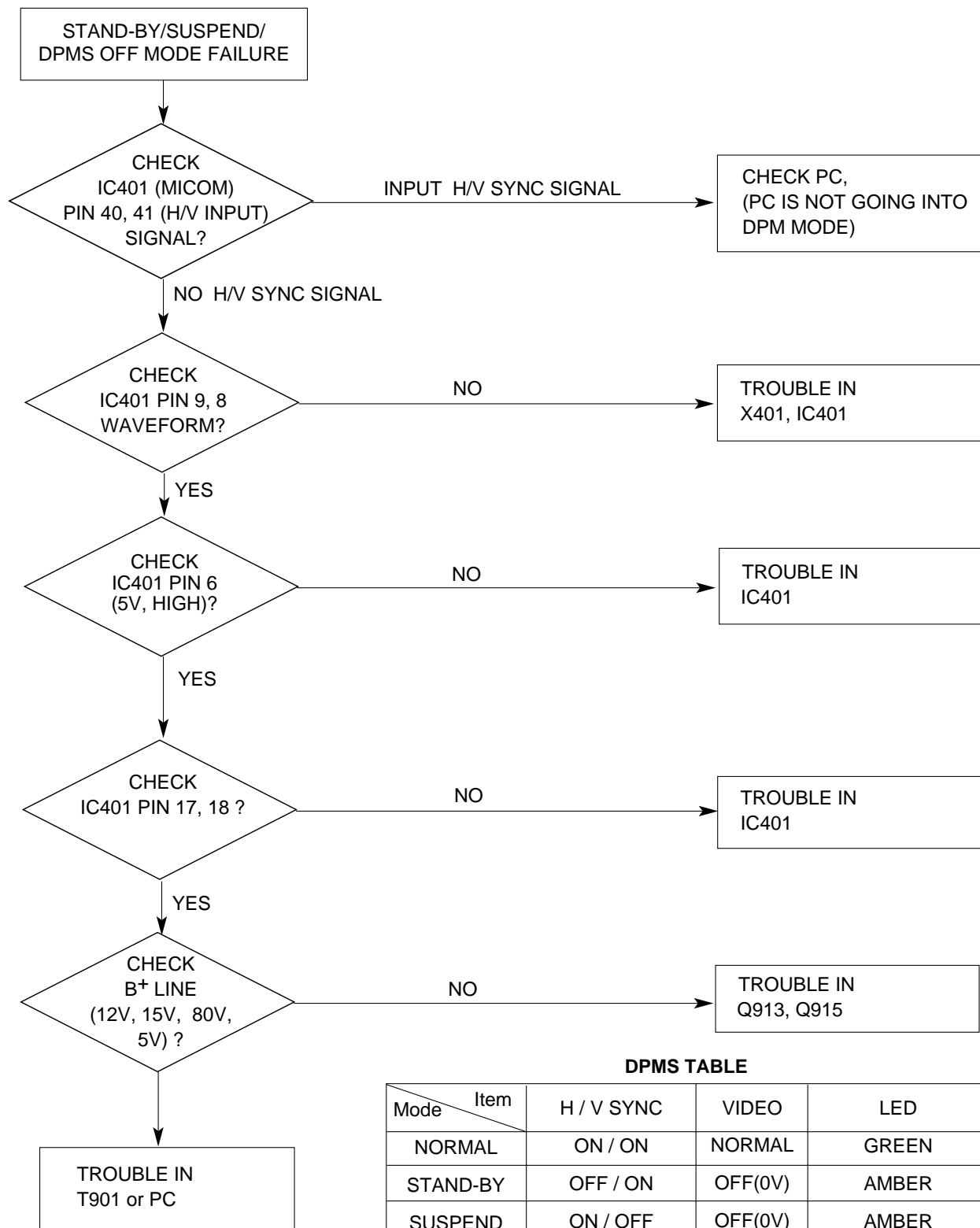
3. NO RASTER



4. NO VERTICAL DEFLECTION



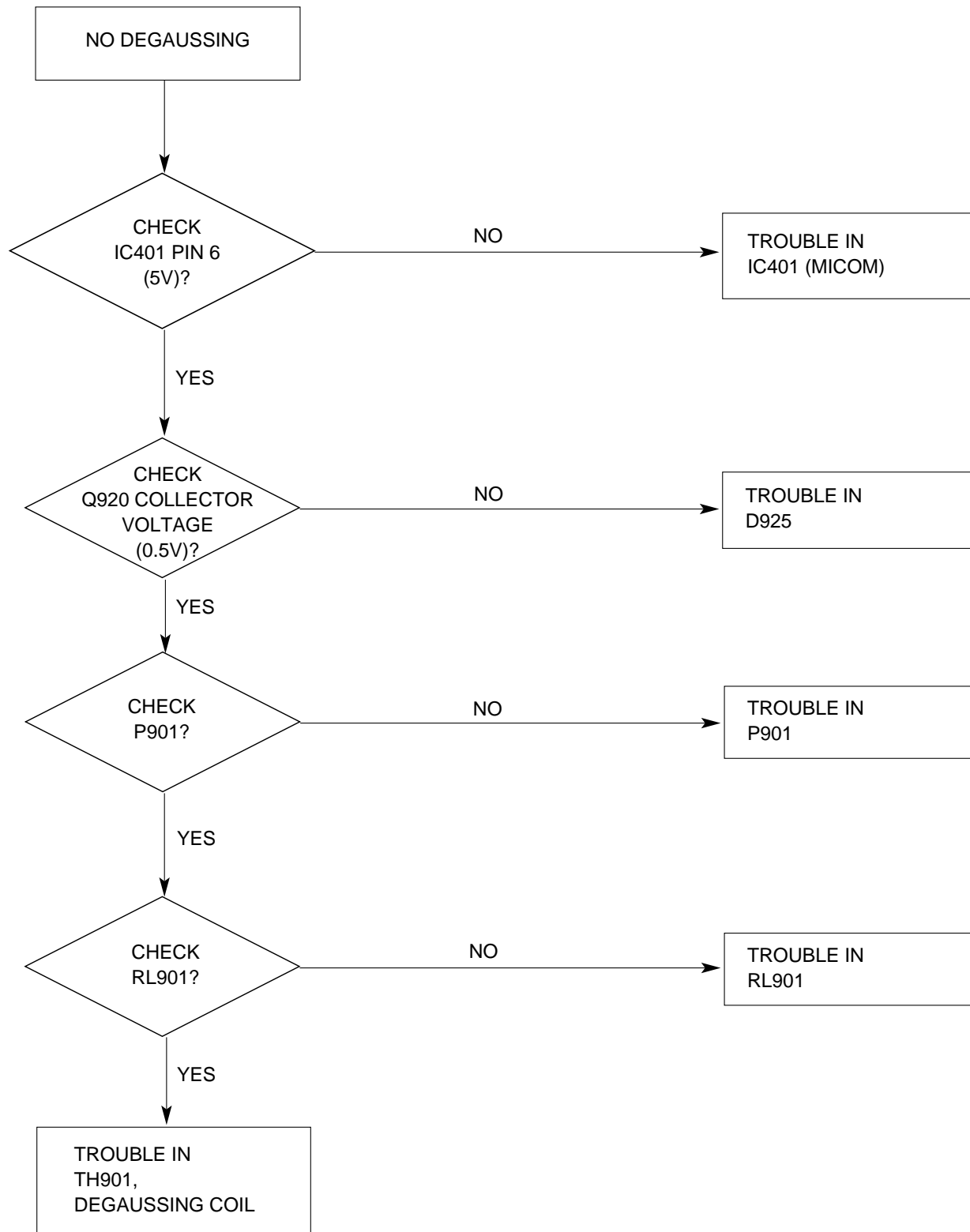
5. TROUBLE IN DPM



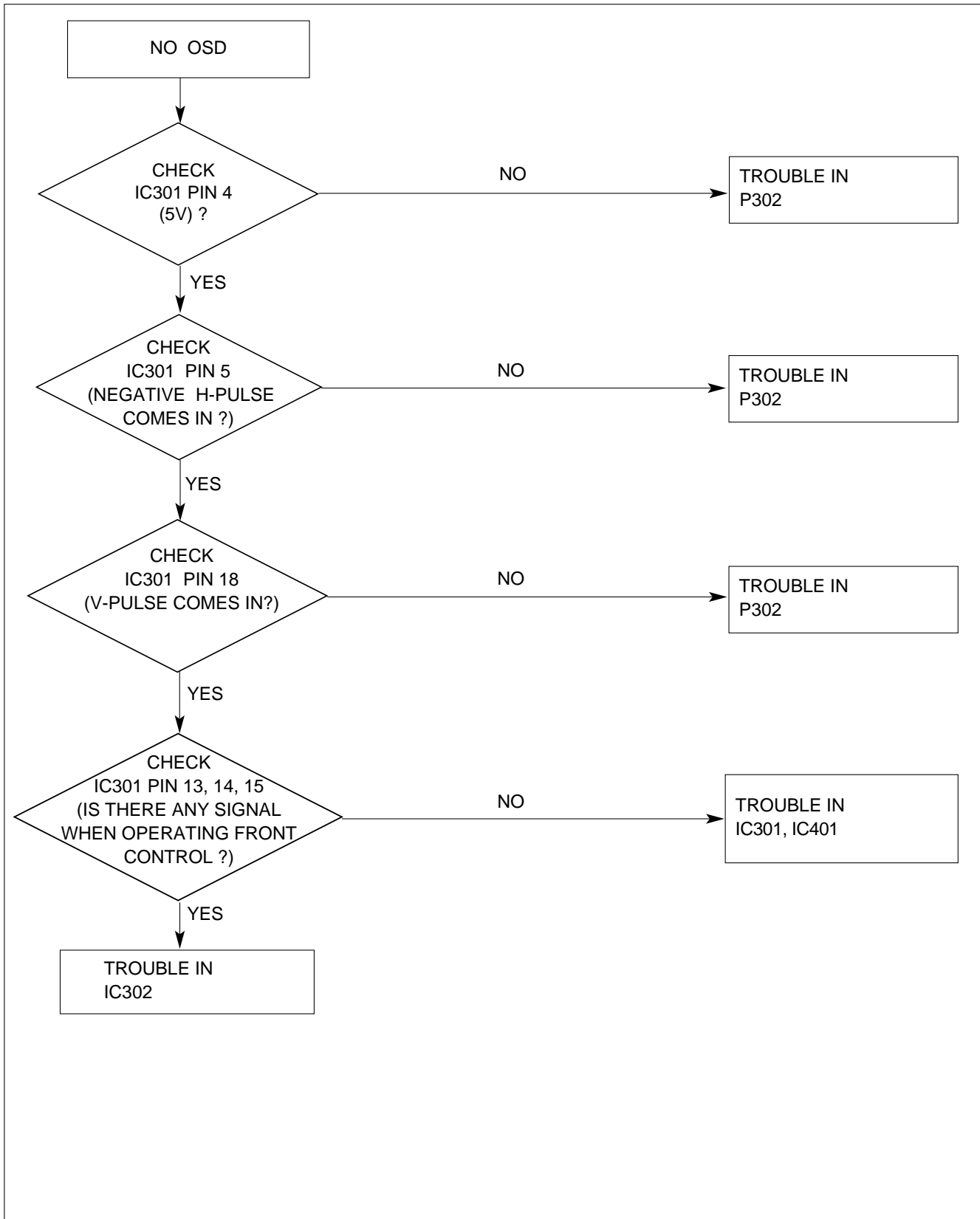
DPMS TABLE

Mode \ Item	H / V SYNC	VIDEO	LED
NORMAL	ON / ON	NORMAL	GREEN
STAND-BY	OFF / ON	OFF(0V)	AMBER
SUSPEND	ON / OFF	OFF(0V)	AMBER
DPMS OFF	OFF / OFF	OFF(0V)	AMBER

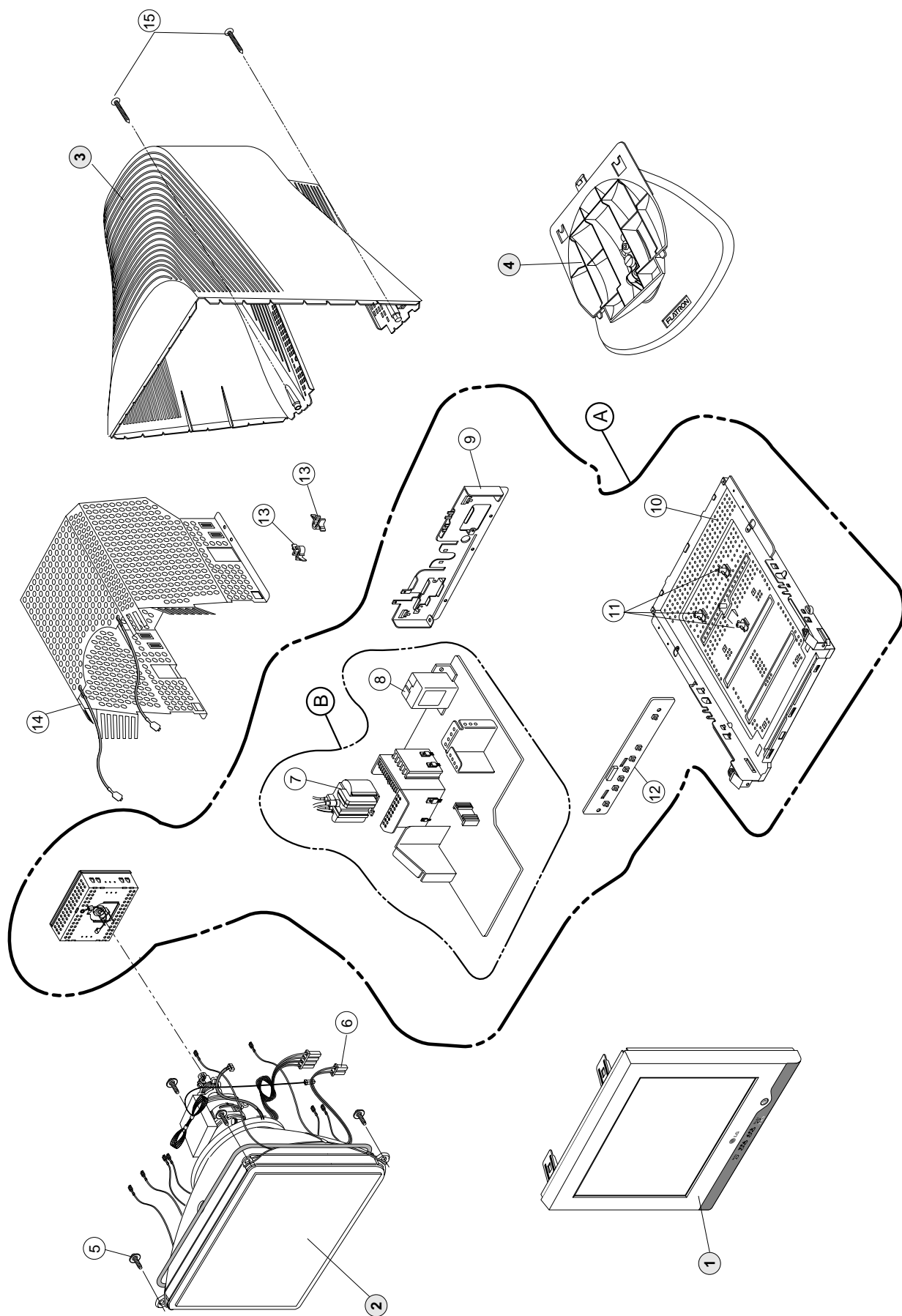
6. NO DEGAUSSING



7. TROUBLE IN OSD



EXPLODED VIEW




EXPLODED VIEW PARTS LIST

Ref. No.	Part No.	Description
1	3091TKC112K	CABINET ASSEMBLY, T910BUK BRAND TKC080 DOW TCO03 DI-LOCAL- For Europe, U.K
	3091TKC112A	CABINET ASSEMBLY, T910BUJ BRAND TKC080 DOW TCO99 DI-LOCAL - For Central ASIA, Israel
2	6318L19011A	CDT(CIRC), M46QEF903X25NDDH LG-PHILIPS DISPLAYS 85KHZ 29.1MM FCDT TCO HB
3	3809TKC054H	BACK COVER ASSEMBLY, T910BK TKC047 PFC DI-LOCAL - For Europe, U.K
	3809TKC054J	BACK COVER ASSEMBLY, T910BK TKC047 DI-LOCAL - For Central ASIA, Israel
4	3043TKK141D	TILT SWIVEL ASSEMBLY, T910BK TKB059/TKT054 DI-LOCAL
5	339-002H	SCREW ASSY, PHP+5*20(FZMY)+GW18 NEW TYPE
6	6140TC4002B	COIL, DEGAUSSING, - - 0.45*115TS,17 OHM,WITH EARTH,T910BJ
7	6174T13006F	FBT (FLY BACK TRANSFORMER), CF2159,T910BK(98K) LIEN CHANGE 19"
	or 6174T13010K	FBT (FLY BACK TRANSFORMER), FQM19A013,T910BJ(98K) SAMSUNG 19"
8	6200TJB001N	FILTER(CIRC),EMC, 02MD5 DELTA BK F900BJ
9	4950TKK292C	METAL REAR T910 DI-LOCAL
10	4951TKK108J	METAL ASSEMBLY, SHIELD T910BK/910BK DI-LOCAL
11	4930TKK022A	HOLDER, PCB FIX FBT
12	6871TST467C	PWB(PCB) ASSEMBLY, SUB, T910BUK LGEDI CONTROL TOTAL BRAND CA129
13	4930TKK031C	HOLDER, PCB FIX , PC+ABS
14	4815TKT017G	SHIELD ASSEMBLY, TOP T910BK/910BK DI-LOCAL
15	332-102F	SCREW, PTP+4*20BP(MSWR/FZMY)
A	3313T19063C	MAIN TOTAL ASSEMBLY, T910BUK LGEDI BRAND CA129 - For Europe, U.K
	3313T19063D	MAIN TOTAL ASSEMBLY, T910BUK BRAND CA-130 - For Central ASIA, Israel
B	6871TMT504C	PWB(PCB) ASSEMBLY, MAIN, T910BUK LGEDI KLEUQD BRAND CA129 TOTAL - For Europe, U.K
	6871TMT504D	PWB(PCB) ASSEMBLY,MAIN, T910BUK KLIRED BRAND CA-130 TOTAL - For Central ASIA, Israel

REPLACEMENT PARTS LIST

CAUTION: BEFORE REPLACING ANY OF THESE COMPONENTS,
READ CAREFULLY THE **SAFETY PRECAUTIONS** IN THIS MANUAL.

* NOTE : **S** SAFETY Mark 
AL ALTERNATIVE PARTS

DATE: 2003. 11. 28.				
*S	*AL	LOC. NO.	PART NO.	DESCRIPTION / SPECIFICATION
CAPACITORS				
		C201	OCN1040K949	0.1M 50V Z F TA52
		C301	OCK1020K515	1000PF 50V K B TR
		C303	OCK3320K515	3300P 50V K B TS
		C304	181-288B	MKT 100V 104JTR PHS26104
		C306	181-288N	MKT 100V 103JTR PHS86103
		C307	OCK1030K945	0.01UF 50V Z F TR
		C308	OCK1040K945	0.1UF 50V Z F TR
		C309	OCK1040K945	0.1UF 50V Z F TR
		C310	181-288E	MKT 100V 474JTR PHS 26474
		C311	181-288B	MKT 100V 104JTR PHS26104
		C312	181-288B	MKT 100V 104JTR PHS26104
		C313	181-288B	MKT 100V 104JTR PHS26104
		C315	OCE476CF638	47UF SHL,SD 16V M FM5 TP 5
		C317	OCK1040K945	0.1UF 50V Z F TR
		C318	OCN1040K949	0.1M 50V Z F TA52
		C319	OCK1040K945	0.1UF 50V Z F TR
		C320	OCE107CN630	100U SHL 100V M FM5
		C321	OCK1040K945	0.1UF 50V Z F TR
		C323	OCE107CH638	100UF SHL,SD 25V M FM5 TP 5
		C324	OCN1040K949	0.1M 50V Z F TA52
		C325	181-288E	MKT 100V 474JTR PHS 26474
		C328	OCE476CN618	47UF SHL 100V M FL TP5
		C330	181-288B	MKT 100V 104JTR PHS26104
		C331	181-288G	MKT 100V 334JTR PHS26334
		C332	181-288G	MKT 100V 334JTR PHS26334
		C333	181-288G	MKT 100V 334JTR PHS26334
		C334	181-288B	MKT 100V 104JTR PHS26104
		C335	181-288B	MKT 100V 104JTR PHS26104
		C339	OCK2710W515	270P 500V K B TS
		C340	181-288B	MKT 100V 104JTR PHS26104
		C341	OCK10302940	0.01M 2KV Z F S
		C342	OCC2200W415	22PF 500V J NP0 TR
		C344	181-288C	MKT 100V 224JTR PHS 26224
		C346	OCK10202515	1000PF D 2KV 10% TR B(Y5P)
		C347	OCK10302940	0.01M 2KV Z F S
		C348	OCK2210W515	220P 500V K B TS
		C351	181-288E	MKT 100V 474JTR PHS 26474
		C352	OCK1020K515	1000PF 50V K B TR
		C353	181-288B	MKT 100V 104JTR PHS26104
		C354	OCE106CF638	10UF SHL,SD 16V M FM5 TP 5
		C355	OCE476CF638	47UF SHL,SD 16V M FM5 TP 5
		C356	181-288B	MKT 100V 104JTR PHS26104
		C357	OCK1040K945	0.1UF 50V Z F TR
		C358	OCN1040K949	0.1M 50V Z F TA52
		C359	OCN1040K949	0.1M 50V Z F TA52
		C360	OCN1040K949	0.1M 50V Z F TA52
		C372	OCN1040K949	0.1M 50V Z F TA52
		C401	OCC5600K415	56P 50V J NP0 TP
		C402	OCE476CH638	47UF SHL,SD 25V M FM5 TP 5
		C403	OCK2710K515	270P 50V K B TS
		C404	OCK2710K515	270P 50V K B TS
		C405	OCK2710K515	270P 50V K B TS
		C406	OCC0400K115	4P 50V D NP0 TS

DATE: 2003. 11. 28.				
*S	*AL	LOC. NO.	PART NO.	DESCRIPTION / SPECIFICATION
		C407	OCC0400K115	4P 50V D NP0 TS
		C408	OCN1040K949	0.1M 50V Z F TA52
		C410	OCK1040K945	0.1UF 50V Z F TR
		C417	OCK1040K945	0.1UF 50V Z F TR
		C456	OCN1040K949	0.1M 50V Z F TA52
		C457	181-288E	MKT 100V 474JTR PHS 26474
		C458	OCK1040K945	0.1UF 50V Z F TR
		C459	OCK1010K515	100PF 50V K B TR
		C460	OCE475CK638	4.7UF SHL,SD 50V M FM5 TP 5
		C601	OCQ6821N419	6800PF 100V J PE NI TP
		C602	181-288Q	MKT 100V 154JTR PHS26154
		C603	OCK1020W515	1000P 500V K B TS
		C605	OCE476CN618	47UF SHL 100V M FL TP5
		C611	OCE108CH630	1000UF SHL 25V M FM5 BULK
		C701	OCE106CK638	10UF SHL,SD 50V M FM5 TP 5
		C702	OCE337EN630	330UF KMG 100V M FM5 BULK
		C704	OCBZTBU003M	562J 20.0*14.0*8.5*10.0 800V
		C705	OCE336CN638	33UF SHL,SD 100V M FM5 TP 5
		C707	OCE106CK638	10UF SHL,SD 50V M FM5 TP 5
		C708	OCE476CQ630	47UF SHL 200V M FM5 BULK
		C709	181-302A	102J 19.5*12.0*7.0*10.0 250V
		C710	OCC3300K405	33P 50V J SL TP
		C711	OCQ4721N419	0.0047U 100V J POLY NI TP5
		C712	OCK2220K515	2200P 50V K B TS
		C713	OCE107CH638	100UF SHL,SD 25V M FM5 TP 5
		C730	OCE476CH638	47UF SHL,SD 25V M FM5 TP 5
		C731	OCE105CK638	1UF SHL,SD 50V 20% FM5 TP 5
		C732	OCK1040K945	0.1UF 50V Z F TR
		C734	181-288T	MKT 100V 223KTR PHS85223
		C735	OCK10302940	0.01M 2KV Z F S
		C736	OCK10302940	0.01M 2KV Z F S
		C738	OCE685CN638	6.8UF SHL,SD 100V 20% TP 5 F
		C739	OCK1040K945	0.1UF 50V Z F TR
		C740	OCE106EK638	10UF KMG 50V M FM5 TP 5
		C741	OCC1000W105	10PF 500V D SL TR
		C742	OCC1000W105	10PF 500V D SL TR
		C743	OCE106CN638	10UF SHL,SD 100V M FM5 TP 5
		C744	OCN1020K519	1000P 50V K B TA52
		C771	OCK6810K515	680P 50V K B TS
		C772	OCK4710W515	470P 500V K B TS
		C801	OCQ8221N519	0.0082UF D 100V 10% PE NI TP
		C802	181-288B	MKT 100V 104JTR PHS26104
		C803	OCE106CK638	10UF SHL,SD 50V M FM5 TP 5
		C804	181-288D	MKT 100V 473JTR PHS26473
		C805	181-476R	2200 D 100V H PP NI TP5
		C806	OCE227CH638	220UF SHL,SD 25V M FM5 TP 5
		C807	181-288B	MKT 100V 104JTR PHS26104
		C808	OCC1000K115	10P 50V D NP0 TS
		C809	OCK1020K515	1000PF 50V K B TR
		C810	OCE105CK638	1UF SHL,SD 50V 20% FM5 TP 5
		C811	OCE476CH638	47UF SHL,SD 25V M FM5 TP 5
		C812	OCE107CH638	100UF SHL,SD 25V M FM5 TP 5
		C813	OCE106CK638	10UF SHL,SD 50V M FM5 TP 5
		C814	OCK5610K515	560P 50V K B TS

DATE: 2003. 11. 28.				
*S	*AL	LOC. NO.	PART NO.	DESCRIPTION / SPECIFICATION
			C815	0CE227CF638 220UF SHL,SD 16V M FM5 TP 5
			C817	0CE476CH638 47UF SHL,SD 25V M FM5 TP 5
			C818	181-288J MKT 100V 563JTR PHS26563
			C819	181-302U 333J 19.5*13.0*7.5*10.0 250V
			C821	0CN1040K949 0.1M 50V Z F TA52
			C823	0CK1010K515 100PF 50V K B TR
			C832	0CK10102515 100PF D 2KV 10% B(Y5P) TR
			C833	181-482C 154J 18.0*14.0*8.0*7.5 250V
			C834	0CN1040K949 0.1M 50V Z F TA52
			C841	0CE476CR630 47UF SHL,SD 250V M FM5 BULK
			C842	0CBZTBU004N MEPP KE/SH/SW 2.5KV 1800PF 5
			C843	0CQ3321N419 3300P 100V J POLY NI TP
			C844	0CBZTBU004N MEPP KE/SH/SW 2.5KV 1800PF 5
			C845	181-288B MKT 100V 104JTR PHS26104
			C846	0CE108EF630 1000UF KMG 16V M FM5 BULK
			C847	0CQ2221N419 2200PF 100V J PE NI TP
			C848	0CK47101515 470P 1KV K B TS
			C849	0CK6810W515 680P 500V K B TS
			C850	0CK1040K945 0.1UF 50V Z F TR
			C851	0CK1040K945 0.1UF 50V Z F TR
			C852	0CN1040K949 0.1M 50V Z F TA52
			C854	181-305F MPP 250V 274J S=10.0
			C855	181-477Y 683JF 20.0*16.5*9.5*7.5 250V
			C857	181-305M 824J 26.0*21.5*13.0*15.0 25
			C858	181-477Z 823J 20.0*17.5*10.0*7.5 250V
			C859	181-477Y 683JF 20.0*16.5*9.5*7.5 250V
			C860	0CN1040K949 0.1M 50V Z F TA52
			C861	0CN1040K949 0.1M 50V Z F TA52
			C864	0CN1040K949 0.1M 50V Z F TA52
			C865	0CE105CK638 1UF SHL,SD 50V 20% FM5 TP 5
			C891	0CZZTFT001J ECQB1H562JM3 562J 50V TP5.0
			C892	0CZZTFT001M ECQB1H103JF3 MATSUSHITA 50V
			C893	181-288B MKT 100V 104JTR PHS26104
			C894	0CZZTFT001L ECQB1H822JM3 822J 50V TP5.0
			C895	181-288B MKT 100V 104JTR PHS26104
			C896	181-288Q MKT 100V 154JTR PHS26154
			C901	0CKZTTA003C SC E 472M 14.0FF7 250V TP7.5
			C902	0CKZTTA003C SC E 472M 14.0FF7 250V TP7.5
			C903	0CK10101515 100PF 1KV K B TR
			C904	181-304V 393J 19.5*15.5*9.5*10.0 400V
			C905	181-296F 330UF SMH(30*40) 400V M VNS
			C906	0CE475CN638 4.7UF SHL,SD 100V M FM5 TP 5
			C907	0CE476CK638 47UF SHL,SD 50V M FM5 TP 5
			C908	0CK1040K945 0.1UF 50V Z F TR
			C909	181-288T MKT 100V 223KTR PHS85223
			C910	0CZZTFT001N ECQB1H123JM3 123J 50V TP5.0
			C911	0CE108CD618 1000UF SHL 10V M FL TP5
			C912	0CE475CK638 4.7UF SHL,SD 50V M FM5 TP 5
			C915	0CE476CH638 47UF SHL,SD 25V M FM5 TP 5
			C916	0CK2220K515 2200P 50V K B TS
			C917	0CKZTTA003C SC E 472M 14.0FF7 250V TP7.5
			C918	0CKZTTA003C SC E 472M 14.0FF7 250V TP7.5
			C919	0CZZTCB003A BULK 7.5 CS E 222M 10.5 250V
			C920	0CC47001505 47PF 1KV K SL TR
			C921	0CE227CR650 220UF SHL 250V M FM7.5 BULK
			C922	0CE3376N650 330M SMS 100V M FM7.5
			C923	0CK1010W515 100P 500V K B TS
			C925	0CE228EH630 2200UF KMG 25V M FM5 BULK
			C926	0CE108EF630 1000UF KMG 16V M FM5 BULK
			C927	0CE228CH630 2200U SHL 25V M FM5
			C928	0CE108EF630 1000UF KMG 16V M FM5 BULK
			C929	0CK1020K515 1000PF 50V K B TR

DATE: 2003. 11. 28.				
*S	*AL	LOC. NO.	PART NO.	DESCRIPTION / SPECIFICATION
			C930	0CQ2721N419 2700PF 100V J PE NI TP
			C931	0CK1010W515 100P 500V K B TS
			C932	0CC47001505 47PF 1KV K SL TR
			C953	0CE477CF638 470UF SHL TYPE 16V M FM5 TP
			C970	0CE476CH638 47UF SHL,SD 25V M FM5 TP 5
DIODEs				
			D201	0DL305029BA LTL-305DJ-0C2 TP LITEON GREE
			D301	0DS141489AB 1N4148 TP GRANDE DO-34 500MW
			D302	0DS141489AB 1N4148 TP GRANDE DO-34 500MW
			D303	0DS141489AB 1N4148 TP GRANDE DO-34 500MW
			D304	0DS141489AB 1N4148 TP GRANDE DO-34 500MW
			D305	0DS141489AB 1N4148 TP GRANDE DO-34 500MW
			D306	0DS141489AB 1N4148 TP GRANDE DO-34 500MW
			D307	0DS124409AA 1SS244 TP ROHM KOREA
			D308	0DS124409AA 1SS244 TP ROHM KOREA
			D309	0DS124409AA 1SS244 TP ROHM KOREA
			D310	0DS124409AA 1SS244 TP ROHM KOREA
			D311	0DS124409AA 1SS244 TP ROHM KOREA
			D312	0DS124409AA 1SS244 TP ROHM KOREA
			D313	0DS124409AA 1SS244 TP ROHM KOREA
			D314	0DS124409AA 1SS244 TP ROHM KOREA
			D315	0DS124409AA 1SS244 TP ROHM KOREA
			D316	0DR140059DA 1N4005TB52 TP LITEON DO41 60
			D401	0DS141489AB 1N4148 TP GRANDE DO-34 500MW
			D402	0DS141489AB 1N4148 TP GRANDE DO-34 500MW
			D405	0DS141489AB 1N4148 TP GRANDE DO-34 500MW
			D701	0DR400409AC UF4004 GULF TP DO41 400V 1A
			D702	0DR400409AC UF4004 GULF TP DO41 400V 1A
			D703	0DS141489AB 1N4148 TP GRANDE DO-34 500MW
			D704	0DR100009CA RGP10G TP GULF SEMICONDUCTOR
			D706	0DS141489AB 1N4148 TP GRANDE DO-34 500MW
			D707	0DR100009DA RGP10J TP GULF SEMICONDUCTOR
			D708	0DRFJ00011A YG339D6F208 FUJI ST TO220 -4
			D731	0DS141489AB 1N4148 TP GRANDE DO-34 500MW
			D732	0DD400709CB UF4007 TP G.I DO204AL 1000V
			D733	0DD400709CB UF4007 TP G.I DO204AL 1000V
			D734	0DD400709CB UF4007 TP G.I DO204AL 1000V
			D735	0DS141489AB 1N4148 TP GRANDE DO-34 500MW
			D736	0DS141489AB 1N4148 TP GRANDE DO-34 500MW
			D737	0DS141489AB 1N4148 TP GRANDE DO-34 500MW
			D738	0DS141489AB 1N4148 TP GRANDE DO-34 500MW
			D740	0DS141489AB 1N4148 TP GRANDE DO-34 500MW
			D771	0DS141489AB 1N4148 TP GRANDE DO-34 500MW
			D772	0DS141489AB 1N4148 TP GRANDE DO-34 500MW
			D773	0DS141489AB 1N4148 TP GRANDE DO-34 500MW
			D801	0DS141489AB 1N4148 TP GRANDE DO-34 500MW
			D802	0DS141489AB 1N4148 TP GRANDE DO-34 500MW
			D803	0DS141489AB 1N4148 TP GRANDE DO-34 500MW
			D804	0DS141489AB 1N4148 TP GRANDE DO-34 500MW
			D805	0DS141489AB 1N4148 TP GRANDE DO-34 500MW
			D808	0DS141489AB 1N4148 TP GRANDE DO-34 500MW
			D811	0DS141489AB 1N4148 TP GRANDE DO-34 500MW
			D812	0DS141489AB 1N4148 TP GRANDE DO-34 500MW
			D831	0DRGF00150A UF5404 GULF BK DO201AD 400V
			D833	0DR140059DA 1N4005TB52 TP LITEON DO41 60
			D834	0DS141489AB 1N4148 TP GRANDE DO-34 500MW
			D837	0DS141489AB 1N4148 TP GRANDE DO-34 500MW
			D838	0DRFC00020A FFPF10F150S FAIR CHILD BK TO
			D839	0DS141489AB 1N4148 TP GRANDE DO-34 500MW
			D840	0DR100009DA RGP10J TP GULF SEMICONDUCTOR

DATE: 2003. 11. 28.				
*S	*AL	LOC. NO.	PART NO.	DESCRIPTION / SPECIFICATION
		D861	0DRGF00069A	SB140 GULF TP DO41 40V 1A 40
		D901	0DRGF00090A	GBL06 GULF BK GBL 600V 4A 12
		D902	0DRGF00109A	GUF10M GULF TP DO41 1000V 1A
		D903	0DR100009CA	RGP10G TP GULF SEMICONDUCTOR
		D904	0DR100009DA	RGP10J TP GULF SEMICONDUCTOR
		D905	0DS141489AB	1N4148 TP GRANDE DO-34 500MW
		D907	0DS141489AB	1N4148 TP GRANDE DO-34 500MW
		D908	0DS141489AB	1N4148 TP GRANDE DO-34 500MW
		D910	0DRGF00139A	GPP20J GULF TP DO15 600V 2.0
		D913	0DS141489AB	1N4148 TP GRANDE DO-34 500MW
		D914	0DS141489AB	1N4148 TP GRANDE DO-34 500MW
		D920	0DRSD00079A	D2L20U SHINDENGEN TP DO-204A
		D921	0DRSD00079A	D2L20U SHINDENGEN TP DO-204A
		D922	0DRGF00150A	UF5404 GULF BK DO201AD 400V
		D923	0DRGS00400A	31GF4 GENERAL SEMICONDUCTOR
		D924	0DR260400AA	S2L60-4004P15 BK SHINDENGEN
		D925	0DS141489AB	1N4148 TP GRANDE DO-34 500MW
		D926	0DR260400AA	S2L60-4004P15 BK SHINDENGEN
		D927	0DS141489AB	1N4148 TP GRANDE DO-34 500MW
		D928	971-0016	TIN HDC 0.60H
		D929	0DRGS00400A	31GF4 GENERAL SEMICONDUCTOR
		D951	0DR100009CA	RGP10G TP GULF SEMICONDUCTOR
		ZD401	0DZ560009AG	GDZJ5.6B TP GRANDE DO-34 500
		ZD402	0DZ560009AG	GDZJ5.6B TP GRANDE DO-34 500
		ZD403	0DZ560009AG	GDZJ5.6B TP GRANDE DO-34 500
		ZD404	0DZ560009AG	GDZJ5.6B TP GRANDE DO-34 500
		ZD405	0DZ560009AG	GDZJ5.6B TP GRANDE DO-34 500
		ZD407	0DZ560009AG	GDZJ5.6B TP GRANDE DO-34 500
		ZD408	0DZ560009AG	GDZJ5.6B TP GRANDE DO-34 500
		ZD409	0DZ560009AG	GDZJ5.6B TP GRANDE DO-34 500
		ZD410	0DZ560009AG	GDZJ5.6B TP GRANDE DO-34 500
		ZD601	0DZ560009AG	GDZJ5.6B TP GRANDE DO-34 500
		ZD703	0DZ510009BE	GDZ5.1B TP GRANDE DO34 500MW
		ZD711	0DZ180009BD	GDZJ18B TP GRANDE DO34 0.5W
		ZD712	0DZ560009AG	GDZJ5.6B TP GRANDE DO-34 500
		ZD801	0DZ110009AD	MTZJ11B TP ROHM-K DO34 500MW
		ZD802	0DZ180009BD	GDZJ18B TP GRANDE DO34 0.5W
		ZD804	0DZ180009BD	GDZJ18B TP GRANDE DO34 0.5W
		ZD902	0DZ560009AG	GDZJ5.6B TP GRANDE DO-34 500
ICs				
		IC302	0IPRPNS025B	LM1246DDB/NA NATIONAL SEMICO
		IC303	0IPRPNS007A	LM2463TA NATIONAL SEMICONDC
		IC304	0IPRPNS005A	LM2480NA NATIONAL SEMICONDC
		IC305	0IPRPNS022B	LM1270NA-AZ5 NATIONAL SEMICO
		IC401	0IZZTSZ314C	98K K-CHASSIS WT62P1 42P WEL
		IC402	0ISG240860A	M24C08-BN6 8DIP BK 8K SERIAL
		IC601	0IPRPPH018A	TDA4867J PHILIPS 9PIN,ST DIP
		IC702	0INS353000A	LF353N OP-AMP
		IC801	0IPRPPH005A	TDA4841PS PHILIPS 32P,SDIP S
		IC802	0IMI625010A	M62501P 16P4 BK INTERFACE PW
		IC901	0ISS384300A	KA3843B 8P SDIP BK PWM CONTR
		IC903	0ISS780500F	KA7805
		IC904	0IKE781200F	KIA78L12BP(AT) 3P 12V,150MA
COILs & COREs				
		FB201	971-0016	TIN HDC 0.60H
		FB301	6210TCZ001J	BAS3550T0(125-022J) BO SUNG
		FB302	6210TCE003P	BRS2550B BO SUNG 2550MM AXIA
		FB303	6210TCZ001J	BAS3550T0(125-022J) BO SUNG

DATE: 2003. 11. 28.				
*S	*AL	LOC. NO.	PART NO.	DESCRIPTION / SPECIFICATION
		FB304	6210TCZ001J	BAS3550T0(125-022J) BO SUNG
		FB305	6210TCE003J	BAS2550T BO SUNG 2550MM AXIA
		FB306	6210TCE003A	BRD3510B BO SUNG 3510MM RADI
		FB309	6210TCE003B	BRS3580B BO SUNG 3580MM RADI
		FB310	6210TCE003A	BRD3510B BO SUNG 3510MM RADI
		FB311	6210TCE003A	BRD3510B BO SUNG 3510MM RADI
		FB351	6210TCE003J	BAS2550T BO SUNG 2550MM AXIA
		FB401	6210TCE003J	BAS2550T BO SUNG 2550MM AXIA
		FB402	6210TCE003N	BRD3565B BO SUNG 3565MM RADI
		FB403	6210TCE003L	BAS3580T BO SUNG 3580MM AXIA
		FB404	6210TCE003F	BRD3580B BO SUNG 3580MM RADI
		FB405	6210TCE003F	BRD3580B BO SUNG 3580MM RADI
		FB701	6210TCE003J	BAS2550T BO SUNG 2550MM AXIA
		FB801	6210TCE003J	BAS2550T BO SUNG 2550MM AXIA
		FB841	6210TCE003P	BRS2550B BO SUNG 2550MM RADI
		FB901	6210TCE003J	BAS2550T BO SUNG 2550MM AXIA
		FB902	6210TCE003A	BRD3510B BO SUNG 3510MM RADI
		FB903	6210TCE003H	BAS3510T BO SUNG 3510MM AXIA
		FB904	6210TCE003H	BAS3510T BO SUNG 3510MM AXIA
		FB905	6210TCE003C	BRD3514B BO SUNG 3514MM RADI
		FB906	6210TCE003H	BAS3510T BO SUNG 3510MM AXIA
		FB907	6210TCE003J	BAS2550T BO SUNG 2550MM AXIA
		FB908	6210TCE003J	BAS2550T BO SUNG 2550MM AXIA
		FB909	6210TCE003H	BAS3510T BO SUNG 3510MM AXIA
		L301	6210TCE003J	BAS2550T BO SUNG 2550MM AXIA
		L302	6210TCE003J	BAS2550T BO SUNG 2550MM AXIA
		L303	6210TCE003J	BAS2550T BO SUNG 2550MM AXIA
		L311	0LA0390K119	0.39UH K 2.3*3.4 TP
		L312	0LA0390K119	0.39UH K 2.3*3.4 TP
		L313	0LA0470K119	0.47UH K 2.3*3.4 TP
		L701	6140TBZ009C	NO CORE 10UH 0.12*15MM 50.5T
		L801	6140TYZ011B	- GET DR14*15 EB990G H-LIN
		L806	150-985N	DR10*10 4.7UH 0.16MM 322.5
		L901	6140TBZ031B	EE36SI PFC 49MH 0.5MM 228 -For Europe, U.K
TRANSISTOR				
		Q458	0TR320509AB	KTC3205-Y(KTC2236A) TP KEC T
		Q459	0TR127309AA	KTA1273-Y(KTA966A) TP KEC TO
		Q701	0TRFC10003A	FAIRCHILD KSD882Y-S ST TO126
		Q704	0TF760000AD	SSS7N60B FAIRCHILD ST TO220F
		Q705	0TR320209AA	KTC3202-Y(KTC1959) TP KEC TO
		Q706	0TR127009AA	KTA1270-Y(KTA562TM) TP KEC T
		Q707	0TR390409CA	FAIRCHILD 2N3904(TA) TP TO-9
		Q708	0TR319809AA	KTC3198-Y(KTC1815) TP KEC TO
		Q721	0TR390409CA	FAIRCHILD 2N3904(TA) TP TO-9
		Q723	0TR390409CA	FAIRCHILD 2N3904(TA) TP TO-9
		Q724	0TR463300AB	2SC4633(LS-CB11) BK SANYO L
		Q725	0TR463300AB	2SC4633(LS-CB11) BK SANYO L
		Q726	0TR555109AB	2N5551 TP SAMSUNG TO92 AMP
		Q771	0TR920009AB	KSP92 TP SAMSUNG TO92 HIGH V
		Q801	0TRFC10007A	FJAF6815 FAIRCHILD ST TO3PF
		Q802	0TR471009AA	KSD471AC-Y TP SAMSUNG TO92
		Q803	0TR564009AB	KSB564AC-YTA TP SANSUNG TO92
		Q804	0TR319809AA	KTC3198-Y(KTC1815) TP KEC TO
		Q806	0TR471009AA	KSD471AC-Y TP SAMSUNG TO92
		Q807	0TR564009AB	KSB564AC-YTA TP SANSUNG TO92
		Q808	0TR127009AA	KTA1270-Y(KTA562TM) TP KEC T
		Q810	0TR114009AB	DTC114ES TP ROHM-K SPT NPN
		Q811	0TF630001BB	SGS-T(STM) IRF630MFP ST TO22
		Q812	0TR114009AB	DTC114ES TP ROHM-K SPT NPN
		Q832	0TFFC90002A	IRFNL210B FAIRCHILD TP TO-92

DATE: 2003. 11. 28.				
*S	*AL	LOC. NO.	PART NO.	DESCRIPTION / SPECIFICATION
		Q833	0TFFC10008A	SFS9634 FAIRCHILD ST TO220F
		Q834	0TR231609AA	KSC2316-Y TP SAMSUNG TO92L
		Q836	0TF630001BB	SGS-T(STM) IRF630MFP ST TO22
		Q837	0TF630001BB	SGS-T(STM) IRF630MFP ST TO22
		Q839	0TF640000CA	IRFS640A BK SAMSUNG 200V 9A
		Q841	0TR114009AB	DTC114ES TP ROHM-K SPT NPN
		Q842	0TR114009AB	DTC114ES TP ROHM-K SPT NPN
		Q844	0TR114009AB	DTC114ES TP ROHM-K SPT NPN
		Q901	0TFFC10010A	FQPF10N60C FAIRCHILD ST TO22
		Q903	0TR319809AA	KTC3198-Y(KTC1815) TP KEC TO
		Q912	0TR127309AA	KTA1273-Y(KTA966A) TP KEC TO
		Q913	0TR319809AA	KTC3198-Y(KTC1815) TP KEC TO
		Q914	0TR928009AB	KSA928A-Y TP SAMSUNG TO92L P
		Q915	0TR319809AA	KTC3198-Y(KTC1815) TP KEC TO
		Q920	0TR319809AA	KTC3198-Y(KTC1815) TP KEC TO
RESISTORS				
		R201	0RD1001Q609	1K 1/4W(3 5% TA52
		R202	0RD1600Q609	160 1/4W(3 5% TA52
		R203	0RD2200Q609	220 1/4W(3 5% TA52
		R204	0RD2200Q609	220 1/4W(3 5% TA52
		R205	0RD1001Q609	1K 1/4W(3 5% TA52
		R206	0RD1600Q609	160 1/4W(3 5% TA52
		R207	0RD3300Q609	330 1/4W(3 5% TA52
		R208	0RD3300Q609	330 1/4W(3 5% TA52
		R209	0RD5600Q609	560 1/4W(3 5% TA52
		R210	0RD3600Q609	360 1/4W(3 5% TA52
		R211	0RD2200Q609	220 1/4W(3 5% TA52
		R301	0RD0752Q609	75 1/4W(3 5% TA52
		R302	0RD0752Q609	75 1/4W(3 5% TA52
		R303	0RD0752Q609	75 1/4W(3 5% TA52
		R305	0RN6201F409	6.20K 1/6W 1% TA52
		R314	0RD1000Q609	100 1/4W(3 5% TA52
		R315	0RD1000Q609	100 1/4W(3 5% TA52
		R319	0RD8201Q609	8.20K 1/4W(3 5% TA52
		R320	0RD4701Q609	4.70K 1/4W(3 5% TA52
		R326	0RD4701Q609	4.70K 1/4W(3 5% TA52
		R327	0RD2001Q609	2K 1/4W(3 5% TA52
		R328	0RD2001Q609	2K 1/4W(3 5% TA52
		R329	0RD2001Q609	2K 1/4W(3 5% TA52
		R330	0RD1000Q609	100 1/4W(3 5% TA52
		R331	0RD1600Q609	160 1/4W(3 5% TA52
		R332	0RD1800Q609	180 1/4W(3 5% TA52
		R333	0RD1500Q609	150 1/4W(3 5% TA52
		R334	0RD3303Q609	330K 1/4W(3 5% TA52
		R335	0RD3303Q609	330K 1/4W(3 5% TA52
		R336	0RD3303Q609	330K 1/4W(3 5% TA52
		R337	0RD1500Q609	150 1/4W(3 5% TA52
		R340	0RN1002F409	10K 1/6W 1 TA52
		R341	0RD0332A609	33 OHM 1/2 W (7.0) 5% TA52
		R342	0RD0332A609	33 OHM 1/2 W (7.0) 5% TA52
		R343	0RD0332A609	33 OHM 1/2 W (7.0) 5% TA52
		R344	0RD0332Q609	33 1/4W(3 5% TA52
		R345	0RD0332Q609	33 1/4W(3 5% TA52
		R346	0RD0332Q609	33 1/4W(3 5% TA52
		R347	971-0016	TIN HDC 0.60H
		R351	0RN4701F409	4.70K 1/6W 1% TA52
		R352	0RD1000Q609	100 1/4W(3 5% TA52
		R353	0RD1000Q609	100 1/4W(3 5% TA52
		R354	0RD1000Q609	100 1/4W(3 5% TA52
		R355	0RD1000Q609	100 1/4W(3 5% TA52

DATE: 2003. 11. 28.				
*S	*AL	LOC. NO.	PART NO.	DESCRIPTION / SPECIFICATION
		R356	0RN1002F409	10K 1/6W 1 TA52
		R357	0RD4701Q609	4.70K 1/4W(3 5% TA52
		R358	0RD2202Q609	22K 1/4W(3 5% TA52
		R359	0RN1002F409	10K 1/6W 1 TA52
		R401	0RD3300Q609	330 1/4W(3 5% TA52
		R402	0RD1000Q609	100 1/4W(3 5% TA52
		R403	0RD4701Q609	4.70K 1/4W(3 5% TA52
		R405	0RD4701Q609	4.70K 1/4W(3 5% TA52
		R406	0RD4701Q609	4.70K 1/4W(3 5% TA52
		R407	0RD1000Q609	100 1/4W(3 5% TA52
		R409	0RN1002F409	10K 1/6W 1 TA52
		R412	0RD1000Q609	100 1/4W(3 5% TA52
		R413	0RD2202Q609	22K 1/4W(3 5% TA52
		R414	0RD2202Q609	22K 1/4W(3 5% TA52
		R415	0RD2202Q609	22K 1/4W(3 5% TA52
		R416	0RD2202Q609	22K 1/4W(3 5% TA52
		R418	0RD2000Q609	200 1/4W(3 5% TA52
		R419	0RN1002F409	10K 1/6W 1 TA52
		R420	0RD4701Q609	4.70K 1/4W(3 5% TA52
		R421	0RD1001Q609	1K 1/4W(3 5% TA52
		R422	0RD4701Q609	4.70K 1/4W(3 5% TA52
		R423	0RD1000Q609	100 1/4W(3 5% TA52
		R424	0RN5601F409	5.60K 1/6W 1% TA52
		R425	0RD2001Q609	2K 1/4W(3 5% TA52
		R426	0RD2001Q609	2K 1/4W(3 5% TA52
		R428	0RD1000Q609	100 1/4W(3 5% TA52
		R429	0RD1000Q609	100 1/4W(3 5% TA52
		R430	0RD1801Q609	1.80K 1/4W(3 5% TA52
		R431	0RD1801Q609	1.80K 1/4W(3 5% TA52
		R432	0RD1301Q609	1.30K 1/4W(3 5% TA52
		R440	0RD1000Q609	100 1/4W(3 5% TA52
		R443	0RD1001Q609	1K 1/4W(3 5% TA52
		R461	0RX0472J609	47 OHM 1 W 5% TA52
		R462	0RD0102A609	10 OHM 1/2 W (7.0) 5% TA52
		R463	0RD6801Q609	6.80K 1/4W(3 5% TA52
		R464	0RN1000F409	100OHM 1/6 W 1% TA52
		R465	0RN6202F409	62KOHM 1/6 W 1% TA52
		R466	0RD4302Q609	43K 1/4W(3 5% TA52
		R467	0RN5601F409	5.60K 1/6W 1% TA52
		R473	0RD1004Q609	1M OHM 1/4 W (3.4) 5% TA52
		R493	0RD1000Q609	100 1/4W(3 5% TA52
		R494	0RD1000Q609	100 1/4W(3 5% TA52
		R601	0RD2001Q609	2K 1/4W(3 5% TA52
		R602	0RD2001Q609	2K 1/4W(3 5% TA52
		R603	0RD0131A509	1.3 OHM 1/2 W (7.0) 2% TA52
		R604	0RD0331A609	3.3 OHM 1/2 W (7.0) 5% TA52
		R605	0RN1502F409	15K 1/6W 1% TA52
		R606	0RN1202F409	12K 1/6W 1% TA52
		R607	0RD1500A609	150 OHM 1/2 W (7.0) 5% TA52
		R608	0RD1000Q609	100 1/4W(3 5% TA52
		R609	0RD1000A609	100 OHM 1/2 W (7.0) 5% TA52
		R610	0RN0390H609	0.39 1/2W 5 TA52
		R701	0RMZTWD001C	47 OHM 7 W 5% RWR PD-TYPE
		R702	0RD1002Q609	10K 1/4W(3 5% TA52
		R703	0RD3301Q609	3.30K 1/4W(3 5% TA52
		R704	0RD2201Q609	2.20K 1/4W(3 5% TA52
		R705	0RB0150K609	0.15 OHM 2 W 5% TA52
		R706	0RD1003Q609	100K 1/4W(3 5% TA52
		R707	0RD5601Q609	5.60K 1/4W(3 5% TA52
		R710	0RD0222Q609	22 1/4W(3 5% TA52
		R711	0RN1502F409	15K 1/6W 1% TA52
		R712	0RD1003Q609	100K 1/4W(3 5% TA52

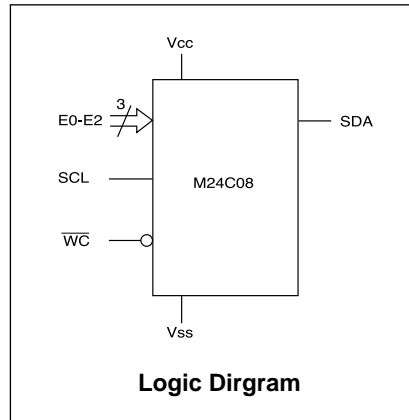
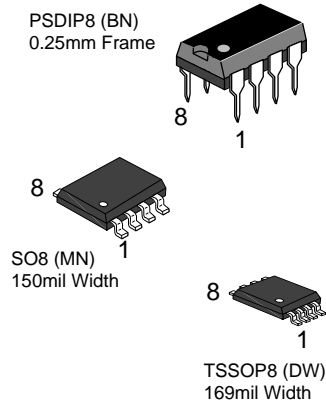
DATE: 2003. 11. 28.				
*S	*AL	LOC. NO.	PART NO.	DESCRIPTION / SPECIFICATION
		R714	ORD1001Q609	1K 1/4W(3 5% TA52
		R715	ORD5601Q609	5.60K 1/4W(3 5% TA52
		R716	ORD1004Q609	1M OHM 1/4 W (3.4) 5% TA52
		R717	ORD1000Q609	100 1/4W(3 5% TA52
		R718	0RN0101H609	1.0 1/2W 5 TA52
		R718-1	0RN0101H609	1.0 1/2W 5 TA52
		R719	ORD0332Q609	33 1/4W(3 5% TA52
		R720	ORD4701Q609	4.70K 1/4W(3 5% TA52
		R721	0RN7501F409	7.50K 1/6W 1% TA52
		R722	ORD1003Q609	100K 1/4W(3 5% TA52
		R723	0RN1302F409	13K 1/6W 1% TA52
		R730	ORD7502Q609	75K 1/4W(3 5% TA52
		R731	ORD1000Q609	100 1/4W(3 5% TA52
		R732	ORD1001Q609	1K 1/4W(3 5% TA52
		R733	ORD4702Q609	47K 1/4W(3 5% TA52
		R734	ORD2001Q609	2K 1/4W(3 5% TA52
		R735	ORD1002Q609	10K 1/4W(3 5% TA52
		R736	0RX2001J609	2K OHM 1 W 5% TA52
		R737	ORD6801Q609	6.80K 1/4W(3 5% TA52
		R738	0RN2702F409	27K 1/6W 1% TA52
		R739	0RC1004A609	1M OHM 1/2 W(7.0) 5% TA52
⚠		R740	0RN1503G409	150K 1/4W 1 TA52
		R741	ORD2001Q609	2K 1/4W(3 5% TA52
		R742	ORD6800Q609	680 1/4W(3 5% TA52
		R743	ORD1000A609	100 OHM 1/2 W (7.0) 5% TA52
		R744	0RX1502J609	15KOHM 1 W 5% TA52
		R745	971-0016	TIN HDC 0.60H
		R746	0RX1503L607	150K OHM 3 W 5% TA62
		R747	0RX1503L607	150K OHM 3 W 5% TA62
		R748	ORD0472Q609	47 1/4W(3 5% TA52
		R749	ORD4300Q609	430 OHM 1/4 W(3.4) 5.00% TA5
		R750	ORD6800Q609	680 1/4W(3 5% TA52
		R751	0RX0102J609	10 OHM 1 W 5% TA52
		R764	ORD0472Q609	47 1/4W(3 5% TA52
		R771	ORD1101Q609	1.1K OHM 1/4 W (3.4) 5% TA52
		R773	0RN2403G409	240K OHM 1/4 W 1% TA52
		R774	ORD4302G509	43K OHM 1/4 W 2.00% TA52
		R775	ORD3300Q609	330 1/4W(3 5% TA52
		R776	ORD7502Q609	75K 1/4W(3 5% TA52
		R780	ORD2202Q609	22K 1/4W(3 5% TA52
		R801	ORD1502Q609	15K 1/4W(3 5% TA52
		R802	0RN2002F409	20K 1/6W 1% TA52
		R803	ORD3302Q609	33K 1/4W(3 5% TA52
		R805	ORD1002Q609	10K 1/4W(3 5% TA52
		R806	ORD1002Q609	10K 1/4W(3 5% TA52
		R807	ORD1001Q609	1K 1/4W(3 5% TA52
		R808	ORD1001Q609	1K 1/4W(3 5% TA52
		R809	ORD2702Q509	27K OHM 1/4 W(3.4) 2% TA52
		R810	ORD1001Q609	1K 1/4W(3 5% TA52
		R811	ORD1001Q609	1K 1/4W(3 5% TA52
		R812	ORD2201Q609	2.20K 1/4W(3 5% TA52
		R813	ORD2401Q609	2.40K 1/4W(3 5% TA52
⚠		R814	0RN1202F409	12K 1/6W 1% TA52
		R815	0RN4700F409	470 1/6W 1 TA52
		R816	ORD1001Q609	1K 1/4W(3 5% TA52
		R817	ORD1002Q609	10K 1/4W(3 5% TA52
		R818	ORD2701Q609	2.70K 1/4W(3 5% TA52
⚠		R822	0RN3601F409	3.6K 1/6W 1 TA52
		R823	ORD2703Q609	270K 1/4W(3 5% TA52
⚠		R824	0RN4700F409	470 1/6W 1 TA52
⚠		R825	0RN1002F409	10K 1/6W 1 TA52
⚠		R826	0RN1502F409	15K 1/6W 1% TA52

DATE: 2003. 11. 28.				
*S	*AL	LOC. NO.	PART NO.	DESCRIPTION / SPECIFICATION
		R827	0RN1002F409	10K 1/6W 1 TA52
		R830	ORD1002Q609	10K 1/4W(3 5% TA52
⚠		R831	0RN1002F409	10K 1/6W 1 TA52
		R835	ORD4700Q609	470 OHM 1/4 W (3.4) 5% TA52
		R836	ORD1002A609	10K OHM 1/2 W (7.0) 5% TA52
		R837	0RN1202F409	12K 1/6W 1% TA52
		R838	0RD0101Q609	1 1/4W(3 5% TA52
		R841	ORD5601Q609	5.60K 1/4W(3 5% TA52
		R842	0RMZTWD001A	4.7 OHM 5 W 5% B RWR
		R843	0RX1003J609	100KOHM 1 W 5% TA52
		R846	ORD0332A609	33 OHM 1/2 W (7.0) 5% TA52
		R847	ORD1000A609	100 OHM 1/2 W (7.0) 5% TA52
		R849	0RX1300J609	130 OHM 1 W 5% TA52
		R851	ORD4701Q609	4.70K 1/4W(3 5% TA52
		R853	ORD4701Q609	4.70K 1/4W(3 5% TA52
		R857	ORD3001Q609	3K 1/4W(3 5% TA52
		R859	ORD0102Q609	10 1/4W(3 5% TA52
		R860	ORD1000Q609	100 1/4W(3 5% TA52
		R861	0RMZTWD001L	RWR SMART 1.5OHM 5 W 5% PD T
		R862	0RN0390J607	0.39 1W 5% TA62
		R865	ORD4701Q609	4.70K 1/4W(3 5% TA52
		R871	0RX1500K607	150 OHM 2 W 5% TA62
		R872	ORD2401Q609	2.40K 1/4W(3 5% TA52
		R873	0RD0122A609	12 OHM 1/2 W (7.0) 5% TA52
		R874	0RX0332K607	33 OHM 2 W 5% TA62
		R875	0RX0242K607	24 OHM 2 W 5.00% TA62
		R876	0RN2402F409	24K 1/6W 1% TA52
		R878	0RX0182K607	18 OHM 2 W 5% TA62
		R891	0RN2701F409	2.7K OHM 1/6 W 1.00% TA52
		R892	0RN6800F409	680 1/6W 1% TA52
		R893	ORD3301Q609	3.30K 1/4W(3 5% TA52
		R894	0RN2202F409	22K 1/6W 1% TA52
		R895	ORD1000Q609	100 1/4W(3 5% TA52
		R896	ORD1000Q609	100 1/4W(3 5% TA52
		R901	180-465H	0.24 OHM 5W 5% B RWR -For Central, Israel
		R902	ORD0512Q609	51 1/4W(3 5% TA52
		R903	ORD0752Q609	75 1/4W(3 5% TA52
		R904	0RX3902K665	39K OHM 2 W 5% SF
		R905	0RX1003K607	100KOHM 2 W 5% TA62
		R906	0RX1003K607	100KOHM 2 W 5% TA62
		R908	0RN0220H609	0.22 1/2W 5% TA52
		R909	ORD1002Q609	10K 1/4W(3 5% TA52
⚠		R910	0RN1602H409	16000 OHM 1/2 W 1% TA52
⚠		R911	0RN6200F409	620 1/6W 1% TA52
		R912	ORD1001Q609	1K 1/4W(3 5% TA52
		R913	0RB0120K607	0.12 OHM 2 W 5% TA62
		R914	ORD2000Q609	200 1/4W(3 5% TA52
		R915	ORD8203Q609	820KOHM 1/4 W (3.4) 5% TA52
		R916	ORD8203Q609	820KOHM 1/4 W (3.4) 5% TA52
		R917	ORD0622Q609	62 OHM 1/4 W(3.4) 5.00% TA52
		R918	ORD1003Q609	100K 1/4W(3 5% TA52
		R919	ORD2002Q609	20K 1/4W(3 5% TA52
		R920	ORD0392Q609	39 1/4W(3 5% TA52
		R921	ORD0332Q609	33 1/4W(3 5% TA52
		R922	ORD5601Q609	5.60K 1/4W(3 5% TA52
		R925	ORD1501Q609	1.50K 1/4W(3 5% TA52
		R926	ORD4701Q609	4.70K 1/4W(3 5% TA52
		R929	0RN0220H609	0.22 1/2W 5% TA52
		R930	0RN0220H609	0.22 1/2W 5% TA52
		R931	0RC4703A609	470K OHM 1/2 W(7.0) 5% TA52
		R932	0RC4703A609	470K OHM 1/2 W(7.0) 5% TA52
		R933	ORD0472Q609	47 1/4W(3 5% TA52

DATE: 2003. 11. 28.				
*S	*AL	LOC. NO.	PART NO.	DESCRIPTION / SPECIFICATION
		R934	0RD3302Q609	33K 1/4W(3 5% TA52
		R935	0RD3301Q609	3.30K 1/4W(3 5% TA52
		R941	0RD2703Q609	270K 1/4W(3 5% TA52
		R949	0RN0220H609	0.22 1/2W 5% TA52
		R951	0RD1101A609	1.1K OHM 1/2 W (7.0) 5% TA52
		R952	0RD4701Q609	4.70K 1/4W(3 5% TA52
		R954	0RD4700A609	470 OHM 1/2 W (7.0) 5% TA52
		R955	0RD4701Q609	4.70K 1/4W(3 5% TA52
		R990	0RD0512Q609	51 1/4W(3 5% TA52
		R991	0RD5101Q609	5.10K 1/4W(3 5% TA52
		R992	0RD5101Q609	5.10K 1/4W(3 5% TA52
OTHERs				
		F1	430-858C	AFC-520 BAE EUN TA
		F2	430-858C	AFC-520 BAE EUN TA
		F901	0FZZTTH004B	TIME LAG HBC TSC 5A/250V,WAL
		J315	6210TCE003K	BAS3550T BO SUNG 3550MM AXIA
		J54	6210TCE0003J	BAS2550T BO SUNG 2550MM AXIA
		RL901	6920TBB006A	DY3M-DC12V DONGYANG 250VAC 5
		SC301	6620TBD003A	PCS701E PARK ELEC. 10PIN 14/
		SC901	6200TJB001N	02MD5 DELTA BK F900BJ
		SG301	6918TAT005E	MTAS-201M GIGA AXIAL TAPING
		SG302	6918TAT005E	MTAS-201M GIGA AXIAL TAPING
		SG303	6918TAT005E	MTAS-201M GIGA AXIAL TAPING
		SG304	6918TAT005E	MTAS-201M GIGA AXIAL TAPING
		SG305	6918TRT004B	SG5-152-CB Y&Y UNICTRON RADI
		SG701	6918TRT004B	SG5-152-CB Y&Y UNICTRON RADI
		SW201	140-058D	SKHV10911A LGEC NON 12 20 HO
		SW202	140-058D	SKHV10911A LGEC NON 12 20 HO
		SW203	140-058D	SKHV10911A LGEC NON 12 20 HO
		SW204	140-058D	SKHV10911A LGEC NON 12 20 HO
		SW205	140-058D	SKHV10911A LGEC NON 12 20 HO
		SW206	140-058D	SKHV10911A LGEC NON 12 20 HO
		SW207	140-058D	SKHV10911A LGEC NON 12 20 HO
⚠		T701	6174T13006F	CF2159,T910BK(98K) LIEN CHAN
		T801	6140TDZ010D	1.3MH EER2834,66.5TS
		T802	6170TCZ008A	EE2218 1.3MH FB995C
		T901	6170TMZ151A	EER4445S 200UH V-18PIN 900BJ
		TH901	6322B00003A	J502P62D070Q290 JA HWA 7 OHM
		TH902	6322TA080BA	SCK-084 THINKING 8 OHM 15% 2 -For Central ASIA, Israel
		VR801	180-035Q	EVN-DJAA03B24 (MEC),20KB
		VR901	180-035A	EVN-DJAA03B12 (MEC),100B
		X401	6202TTB008A	HC-49U HUALIANXING RADIAL 12

PIN CONFIGURATION

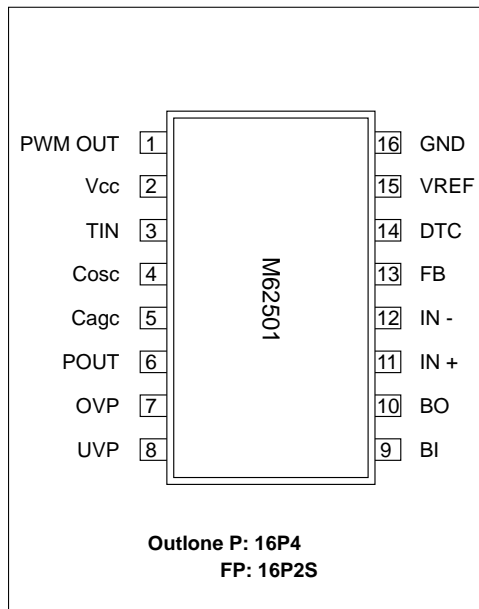
M24C08 Serial I²C BUS EEPROM



SYMBOL	DESCRIPTION
E0-E2	Chip Enable Input
SDA	Serial Data Address Input/Output
SCL	Serial Clock
WC	Write Control
Vcc	Supply Voltage
Vss	Ground

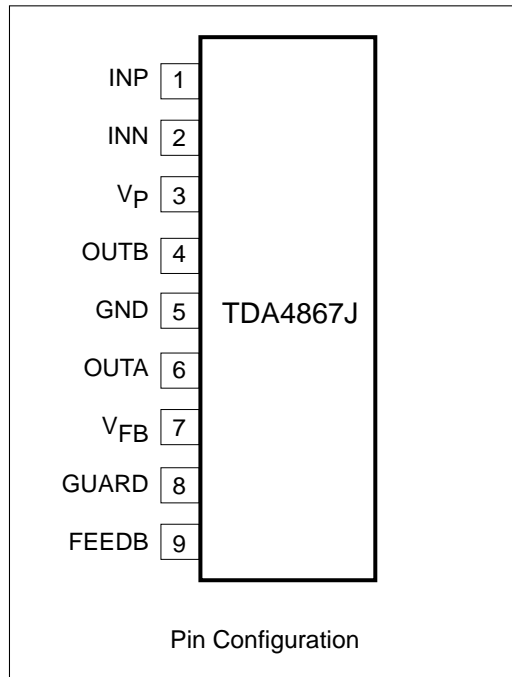
M62501P /FP

PIN CONFIGURATION(TOP VIEW)

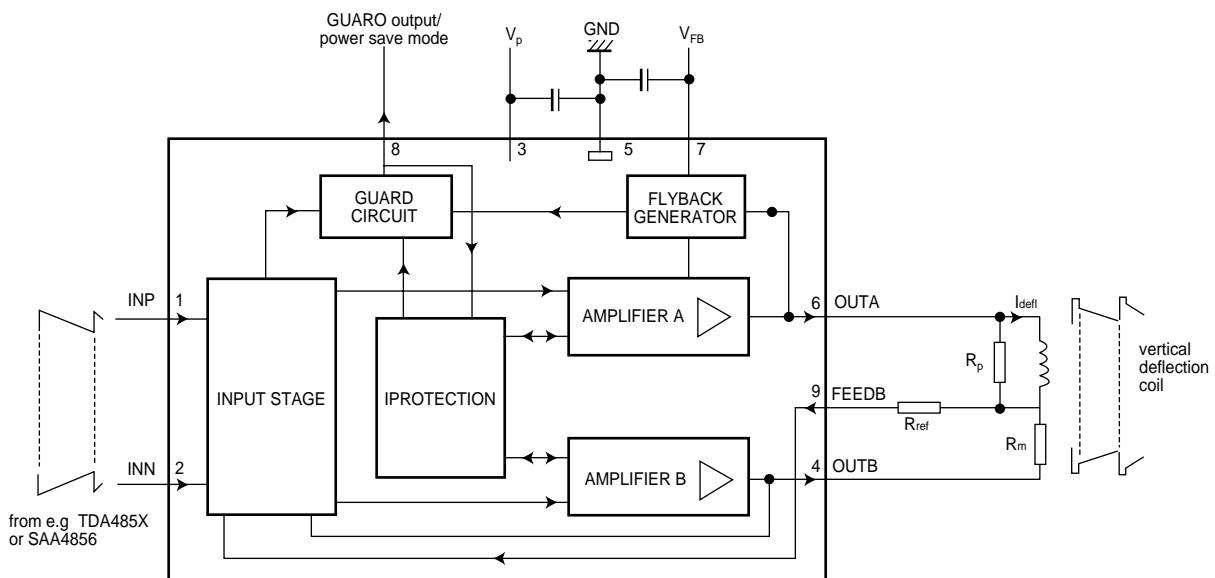


Teerminal Number and The facility

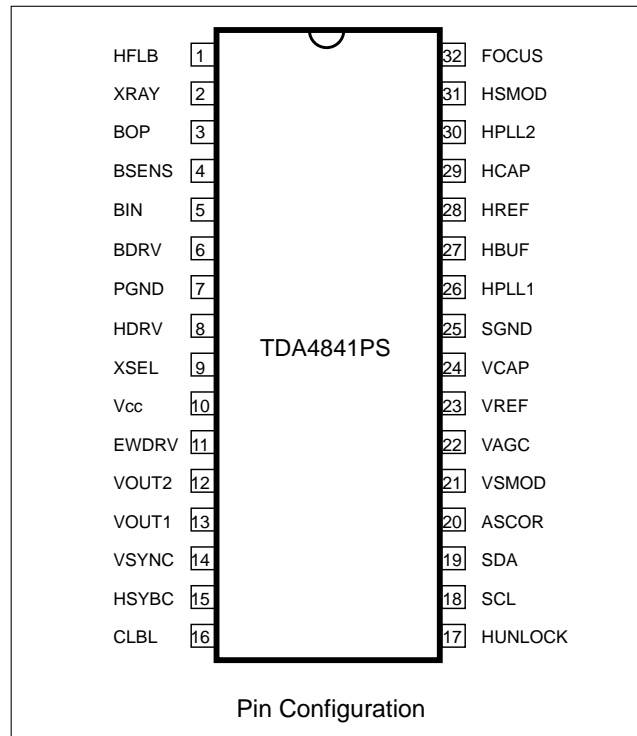
PIN NO.	Symbol	Functional Description
1	PWM OUT	PWM output terminal
2	Vcc	Power supply terminal
3	TIN	Trigger Input terminal
4	CAGC	This pin is used to set oscillating frequency
5	CAGC	This pin is used for AGC setting
6	P.OUT	Output terminal of error signal
7	OVP	Input terminal of Over Voltage Protection
8	UVP	Input terminal of Under Voltage Protection
9	BI	Postive Input terminal of Buffer Amp
10	BO	Output terminal of Buffer Amp
11	IN ⁺	Postive Input terminal of OP Amp
12	IN ⁻	Negative Input terminal of OP Amp
13	FB	Output terminal of OP Amp
14	DTC	Dead time control terminal(Soft start function)
15	VREF	Output terminal of reference voltage (5V)
16	GND	Ground terminal



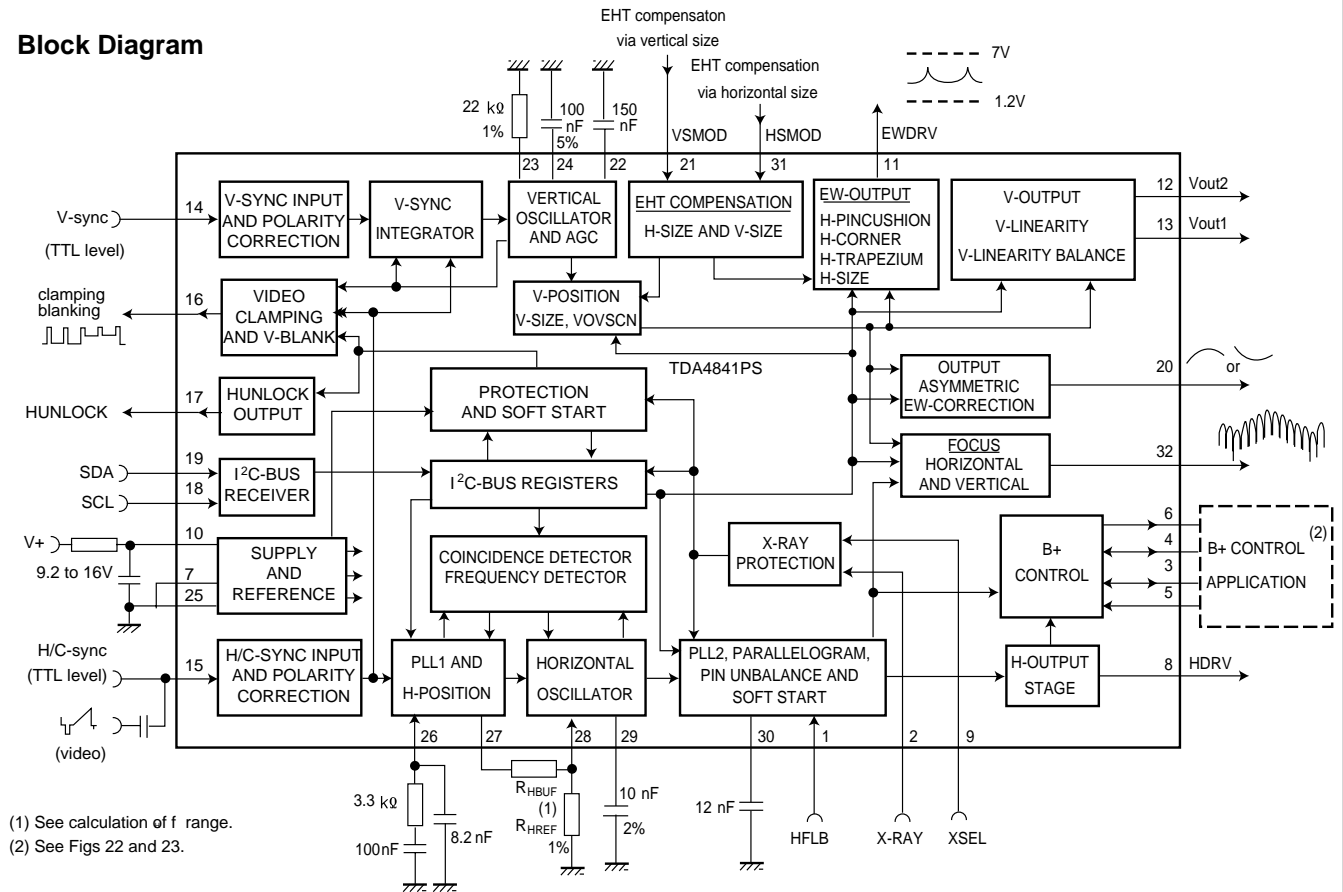
SYMBOL	PIN	DESCRIPTION
INP	1	non-inverted input
INN	2	inverted input
V_P	3	supply voltage
OUTB	4	output B
GND	5	ground
OUTA	6	output A
V_{FB}	7	flyback supply voltage
GUARD	8	guard output
FEEDB	9	feedback inprt



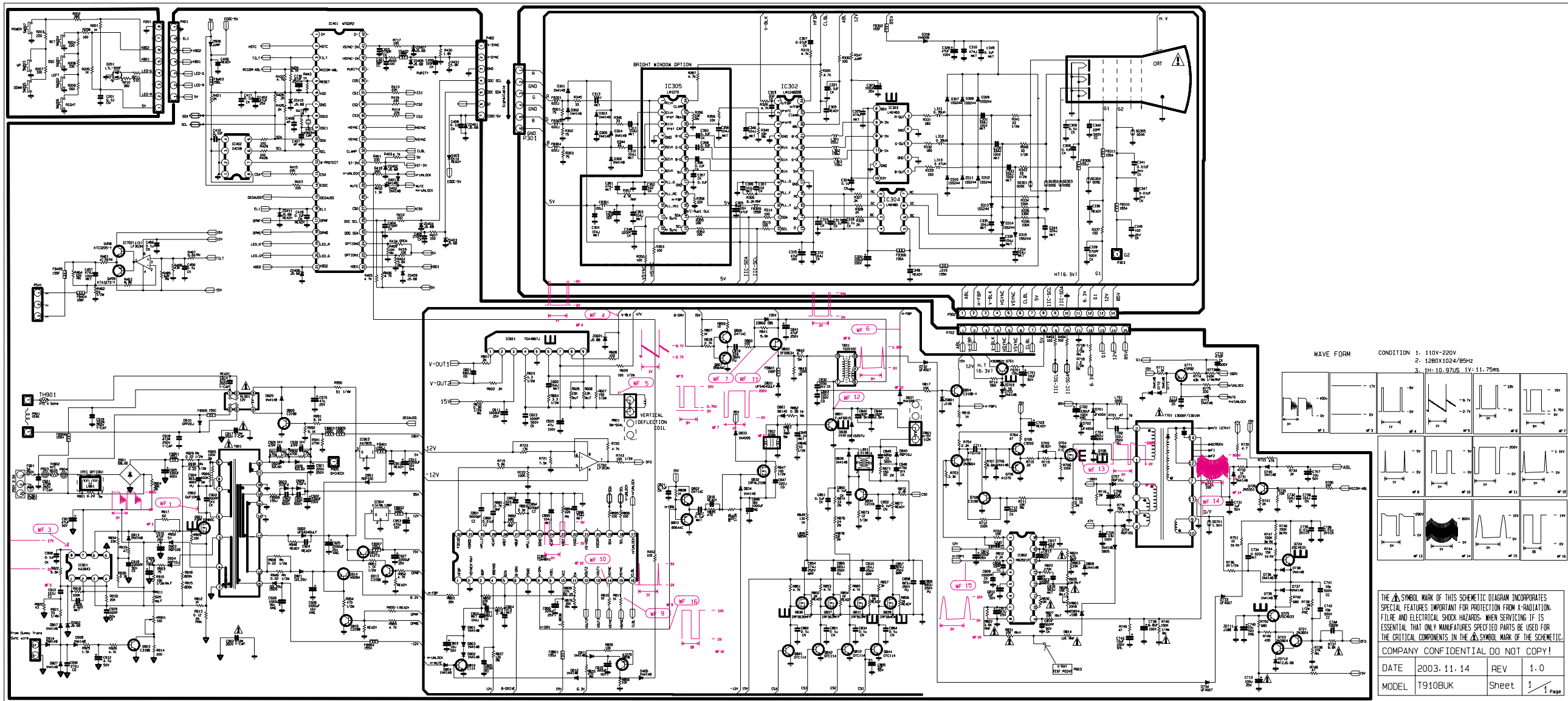
Block Diagram



Block Diagram



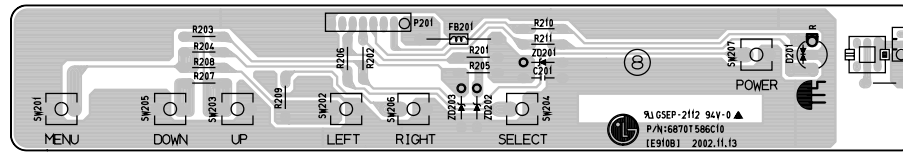
SCHEMATIC DIAGRAM



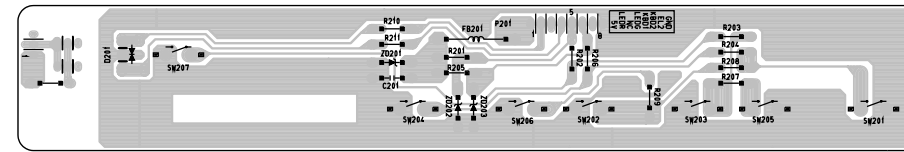
NOTICE
Since this is a basic schematic diagram.
The value of components and some partial connection are
subject to be changed for improvement without notice.

PRINTED CIRCUIT BOARD

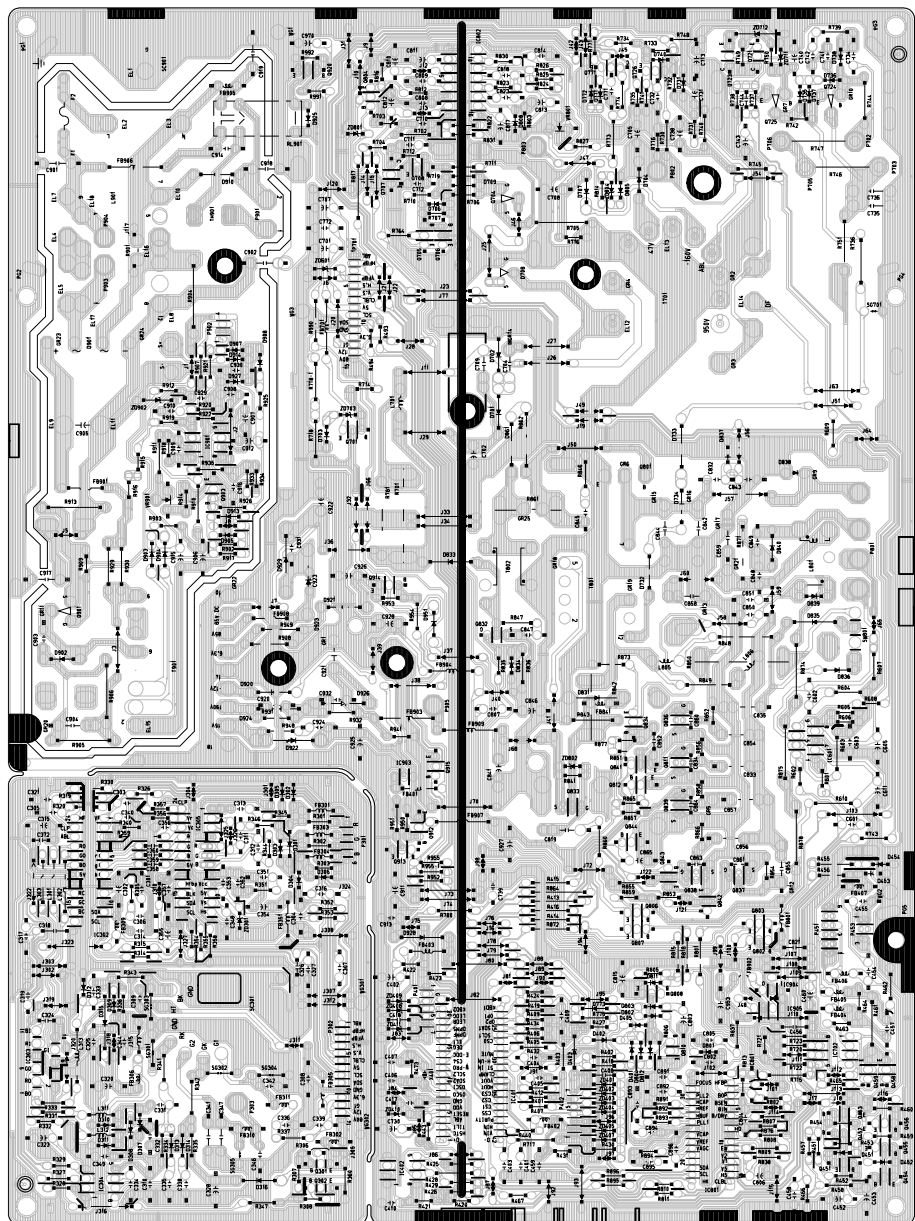
1. CONTROL BOARD (Component Side)



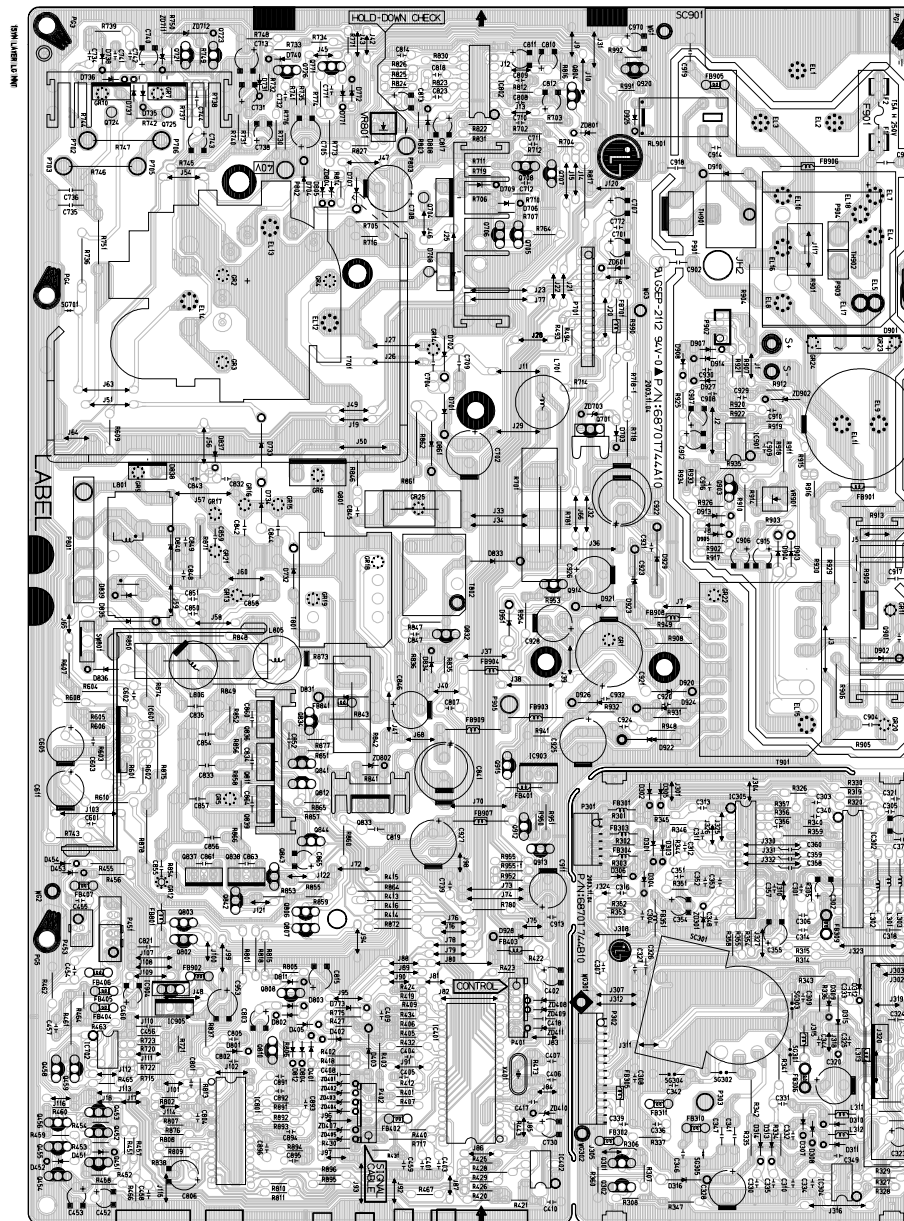
2. CONTROL BOARD (Solder Side)



3. MAIN BOARD (Component Side)



4. MAIN BOARD (Solder Side)





P/NO : 3828TSL076R

Nov. 2003
Printed in Korea