

TCL

SERVICE MANUAL

L32D10 MT23-LA

1. Caution.....	2
2. specification.....	6
3. Alignment Procedure.....	7
4. Scheme Diagram	20
5. Troubleshooting.....	24
6. PCB Layout	30
7. Explode Diagram	32
8. BOM List	33

This manual is the latest at the time of printing, and does not include the modification which may be made after the printing, by the constant improvement of product

1. CAUTION

CAUTION:

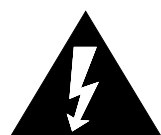
Use of controls, adjustments or procedures other than those specified herein may result in hazardous radiation exposure.



CAUTION
RISK OF ELECTRIC SHOCK DO NOT OPEN.



CAUTION: TO REDUCE THE RISK OF ELECTRICAL SHOCK, DO NOT REMOVE COVER (OR BACK). NO USER SERVICEABLE PARTS INSIDE. REFER SERVICING TO QUALIFIED SERVICE PERSONNEL.



The lightning flash with arrowhead symbol, with an equilateral triangle is intended to alert the user to the presence of uninsulated “dangerous voltage” within the product’s enclosure that may be of sufficient magnitude to constitute a risk of electric shock to the person.



The exclamation point within an equilateral triangle is intended to alert the user to the presence of important operating and maintenance (servicing) instructions in the literature accompanying the appliance.

WARNING: TO REDUCE RISK OF FIRE OR ELECTRIC SHOCK, DO NOT EXPOSE THIS APPLIANCE TO RAIN OR MOISTURE.

IMPORTANT SAFETY INSTRUCTIONS

CAUTION:

Read all of these instructions. Save these instructions for later use. Follow all Warnings and Instructions marked on the audio equipment.

1. Read Instructions- All the safety and operating instructions should be read before the product is operated.
2. Retain Instructions- The safety and operating instructions should be retained for future reference.
3. Heed Warnings- All warnings on the product and in the operating instructions should be adhered to.
4. Follow Instructions- All operating and use instructions should be followed.

FOR YOUR PERSONAL SAFETY

1. When the power cord or plug is damaged or frayed, unplug this television set from the wall outlet and refer servicing to qualified service personnel.
2. Do not overload wall outlets and extension cords as this can result in fire or electric shock.
3. Do not allow anything to rest on or roll over the power cord, and do not place the TV where power cord is subject to traffic or abuse. This may result in a shock or fire hazard.
4. Do not attempt to service this television set yourself as opening or removing covers may expose you to dangerous voltage or other hazards. Refer all servicing to qualified service personnel.
5. Never push objects of any kind into this television set through cabinet slots as they may touch dangerous voltage points or short out parts that could result in a fire or electric shock. Never spill liquid of any kind on the television set.
6. If the television set has been dropped or the cabinet has been damaged, unplug this television set from the wall outlet and refer servicing to qualified service personnel.
7. If liquid has been spilled into the television set, unplug this television set from the wall outlet and refer servicing to qualified service personnel.
8. Do not subject your television set to impact of any kind. Be particularly careful not to damage the picture tube surface.
9. Unplug this television set from the wall outlet before cleaning. Do not use liquid cleaners or aerosol cleaners. Use a damp cloth for cleaning.
- 10.1. Do not place this television set on an unstable cart, stand, or table. The television set may fall, causing serious injury to a child or an adult, and serious damage to the appliance. Use only with a cart or stand recommended by the manufacturer, or sold with the television set. Wall or shelf mounting should follow the manufacturer's instructions, and should use a mounting kit approved by the manufacturer.
- 10.2. An appliance and cart combination should be moved with care. Quick stops, excessive force, and uneven surfaces may cause the appliance and cart combination to overturn.



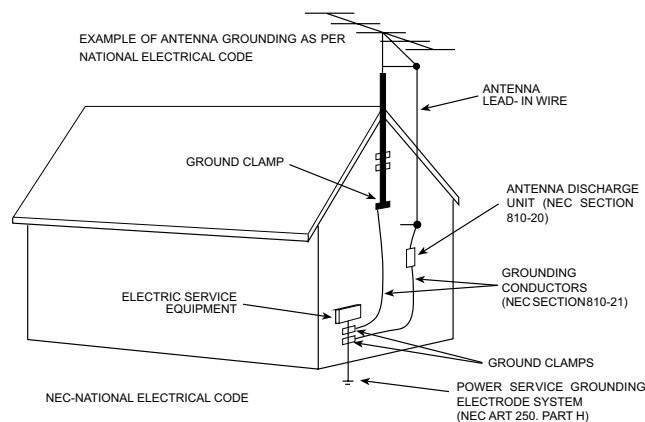
PROTECTION AND LOCATION OF YOUR SET

11. • Do not use this television set near water ... for example, near a bathtub, washbowl, kitchen sink, or laundry tub, in a wet basement, or near a swimming pool, etc.
 - Never expose the set to rain or water. If the set has been exposed to rain or water, unplug the set from the wall outlet and refer servicing to qualified service personnel.
12. Choose a place where light (artificial or sunlight) does not shine directly on the screen.
13. Avoid dusty places, since piling up of dust inside TV chassis may cause failure of the set when high humidity persists.
14. The set has slots, or openings in the cabinet for ventilation purposes, to provide reliable operation of the receiver, to protect it from overheating. These openings must not be blocked or covered.
 - Never cover the slots or openings with cloth or other material.
 - Never block the bottom ventilation slots of the set by placing it on a bed, sofa, rug, etc.
 - Never place the set near or over a radiator or heat register.
 - Never place the set in a "built-in" enclosure, unless proper ventilation is provided.

PROTECTION AND LOCATION OF YOUR SET

- 15.1. If an outside antenna is connected to the television set, be sure the antenna system is grounded so as to provide some protection against voltage surges and built up static charges, Section 810 of the National Electrical Code, NFPA No. 70-1975, provides information with respect to proper grounding of the mast and supporting structure, grounding of the lead-in wire to an antenna discharge unit, size of grounding conductors, location of antenna discharge unit, connection to grounding electrode, and requirements for the grounding electrode.

EXAMPLE OF ANTENNA GROUNDING AS PER NATIONAL ELECTRICAL CODE INSTRUCTIONS



- 15.2. Note to CATV system installer : (Only for the television set with CATV reception)

This reminder is provided to call the CATV system installer's attention to Article 820-40 of the NEC that provides guidelines for proper grounding and, in particular, specifies that the cable ground shall be connected to the grounding system of the building, as close to the point of cable entry as practical.

16. An outside antenna system should not be located in the vicinity of overhead power lines or other electric lights or power circuits, or where it can fall into such power lines or circuits. When installing an outside antenna system, extreme care should be taken to keep from touching such power lines or circuits as contact with them might be fatal.
17. For added protection for this television set during a lightning storm, or when it is left unattended and unused for long periods of time, unplug it from the wall outlet and disconnect the antenna. This will prevent damage due to lightning and power-line surges.

OPERATION OF YOUR SET

18. This television set should be operated only from the type of power source indicated on the marking label. If you are not sure of the type of power supply at your home, consult your television dealer or local power company. For television sets designed to operate from battery power, refer to the operating instructions.
19. If the television set does not operate normally by following the operating instructions, unplug this television set from the wall outlet and refer servicing to qualified service personnel. Adjust only those controls that are covered in the operating instructions as improper adjustment of other controls may result in damage and will often require extensive work by a qualified technician to restore the television set to normal operation.
20. When going on a holiday : If your television set is to remain unused for a period of time, for instance, when you go on a holiday, turn the television set " off " and unplug the television set from the wall outlet.

IF THE SET DOES NOT OPERATE PROPERLY

21. If you are unable to restore normal operation by following the detailed procedure in your operating instructions, do not attempt any further adjustment. Unplug the set and call your dealer or service technician.
22. Whenever the television set is damaged or fails, or a distinct change in performance indicates a need for service, unplug the set and have it checked by a professional service technician.
23. It is normal for some TV sets to make occasional snapping or popping sounds, particularly when being turned on or off. If the snapping or popping is continuous or frequent, unplug the set and consult your dealer or service technician.

FOR SERVICE AND MODIFICATION

24. Do not use attachments not recommended by the television set manufacturer as they may cause hazards.
25. When replacement parts are required, be sure the service technician has used replacement parts specified by the manufacturer that have the same characteristics as the original part. Unauthorized substitutions may result in fire, electric shock, or other hazards.
26. Upon completion of any service or repairs to the television set, ask the service technician to perform routine safety checks to determine that the television is in safe operating condition.

LCD TV SPECIFICATION RELEASE

Version: V1.0

Issued Date: 2010.04.15

Model: L32D10/MT23-LA

PICTURE	
Panel Size (inch)	32.0"
Category	LCD TV
Aspect Ratio	16:9
Color Temperature	Normal/Warm/Cool
Backlight Adjustable	Energy saving/Normal/Sunshine & ALC(Adaptive Luma Control)
Zoom Mode	4:3/16:9 /panoramic/Full
Picture Effect	4 picture effects preset (Normal/Brightness/soft/Custom)
Film Mode (3:2/2:2 pull down)	yes
Picture Enhancement	
Comb Filter	2D
Core Technology	High-quality scaling engine& 2D/3D video de-interlacer
CCS	X
DCDi TM	X
Blue Stretch	yes
Black Stretch	yes
Motion Compensation	yes
DLTI	yes
DCTI	yes
Dynamic Skin Correction	yes
DNR	yes(Off/Low/Normal/Strong)
Panel Specification	
Panel supplier	Samsung
Viewing Technology	--
Display Resolution	1366*768
Brightness (cd/m2)	400
Contrast Ratio	4000:1
Response Time	8ms (G to G)
Viewing Angle (H/V)	178°/178°
Life Time	50,000hrs
Color	16.7M (8 bit)
SOUND	
Speakers	Integrated speakers (Two mediant)
Audio Power Output	5W*2
Sound Processing	Stereo/MTK 3D surround
DVSS (Dolby Virtual Surround)	X
DDAS (Digital Dymic Audio System)	X
AVC (Auto Volume Control)	Yes
BBE	X
SRS	X
BTSC	yes
Sound Features	AV Stereo
Sound Control	Volume, Balance,5 Band EQ, 5 mode presets (Custom/Stereo/Music/Movie/News)
Function	
V-Chip	yes
CCD (Closed Caption)	yes
Teletext	X
PIP/POP	X
Macro Vision	X
Calendar	X
Clock/Timers	Yes
Lock	Yes(Child Lock to lock keys)
OSD Language	English/Spanish/Portuguese
OSD Features	256 COLOURS
Card Reader	X
DVD Combo	X
USB Connection	yes
Game	X
Screen Saver	Yes
Demo Function	X
Melody	yes
Software Upgrade	yes(By USB)



SIGNAL FORMAT CAPABILITY	
Component Video Format	Y,Pb/Cb,Pr/Cr:up to 1080P (Option)
DVI Video Format	X
HDMI Video Format	SD,HD,VGA
PC Compatibility	VGA,SVGA,XGA etc.
TERMINALS	
Audio/CVBS Input (Composite)	1 AUDIO R/L+1 Video: AV1IN 1 AUDIO R/L+1 Video:AV2 IN
S-Video Input	1
Audio Input for S-Video	Share with "AV1 "
YPbPr Input	1
Audio Input for YPbPr	Share with Audio for"AV2 "
YCbCr Input	Share with Audio for "YPbPr"
Audio Input for YCbCr	Share with Audio for "YPbPr"
VGA Input(RGB)	1 (D-Sub,15 Pins)
Audio Input for RGB	1
DVI	X
Audio Input for DVI	X
HDMI 1.3	1
Audio/CVBS Output (Composite)	1
SPDIF	--
Headphone Output	1 (Φ3.5mm)
RF Input(Antenna)	1 (F Type)
USB 2.0	1 (Supports MP3 & JPEG Decode)
Basic Info.	
TV System	NTSC-M,PAL M/N
AV System	PAL,NTSC
Channels	181 (Antenna: 2~69; CATV: 1~125)
Chassis	MT23-LA
Certification	CB
Power Supply	AC 110V-240V 50/60Hz
Power Consumption-TV on	90W
Power Consumption-Standby	<1W
Default Color of Front Cabinet	Black
Keyboard Position	on the left side
Base Stand Detachable	Yes
Unpackaged Dimension for Main Body (L*H*D) (mm)	
With Base Stand (mm)	807mm*580mm*250mm
Without Base Stand (mm)	807mm*530mm*81.5mm
Packaged Dimension (L*H*D)	
Main Body (mm)	883mm*170mm*617mm
Speaker Box	X
Base Stand	Packaged with ALL
Net Weight (Kg)	8.9
Gross Weight (Kg)	11
Container Loading	
20 feet	321
40 feet	672
40 feet high	761
ACCESSORIES	
Operation Manual	English(Default)
Remote Control Mode	RC288 (with two 7# batteries)
Base Stand	Integrated Packaging
Speaker Box	Integrated
Wall Mount	Optional
Others	AC Power cord

Drafted by: 韩春宇

Approved by:

Design and specifications are subject to change without notice!

Alignment Procedure

MODEL/Chassis: L24D10/MT23

L26D10/MT23

L32D10/MT23

Version: V1.0

PREPARED BY : chunyu han **DATE:** 2010-3-20

APPROVED BY : _____ **DATE:** _____

1、Contents:

MT23 chassis LCD display is the integration of VIDEO and PC;It has high quality picture, little cubage, little weight, energy saving and ;little rays.

2、The way to enter Factory Mode and exit Factory Mode

◆The way to enter Factory Mode:

Method one: In any sources, enter to the menu, move the cursor to “Contrast” item then press the “9”, “7”, “3”, “5” keys continuously on RC. Then the factory menu will show on the panel, as follow:

FACTORY MENU	
VERSION	OMT2301-LF*
WB	
ADC	
VOL. CURVE	
PIC. CURVE	
PRODUCTION	
CONFIG	
SHOP SET	
NVM RESET	
SHOP INIT	

Method two: In the “PRODUCTION” of the factory menu, if set “FacMode” and “FacHotkey” as “on”. There is a “P” on the left corner of panel. In this status, you can enter the factory menu by press the “RETURN” key of RC.

Note: In the factory menu, you can return to the previous menu by the “MENU” key of RC.

◆The way to Exit P-Mode:

- 2.1, Press the “Exit” key of RC exit the factory menu;
- 2.2, Press the “Menu” key of RC go back to the previous menu;
- 2.3, If the hotkey of factory menu is “ON”, the status can not be changed by turn off the TV. You need change the hotkey of the factory to “OFF”.
- 2.4, SHOP INIT should be done at the last alignment, If the NVM is set OK you do not need do this.

3、Indicate software version

3.1、Software part number should be made reference to the latest BOM.

3.2、You see software version on the screen when enter the factory Mode.

CPU: V8-0MT2311-LF1V*** (software version)

DAT:XXXXXX (software edit date)

4、The adjustment for the tv.

(1) Device.

1, Color TV Pattern Generator PM5418;

2, Chroma2329;

3, Color Analyzer CA-210;

(2) **ADC Calibration**

MT23 chassis do not need adjust;

(3) **White Balance Adjustment**

The sources AV, YPbPr, HDMI and PC need adjust the WB; the standard of picture need adjust, the other do not need;

(standard: X=280, Y=290; warm: X=300, Y=305; cold: X=270, Y=270)

3.1. devices and signal:

Pattern113(white) of Chroma2329, Pattern114(dark) of Chroma2329 ,
Timing38(PAL) of Chroma2329;

3.2. The steps of adjustment

3.2.1. Enter the WB adjust menu;

3.2.2. Input the dark signal of Chroma2329;

3.2.3. Adjust R-offset, B-offset, to set the reading of the color analyzer to (X=280+/-5; Y=290+/-5);

3.2.4. Input the white signal of Chroma2329;

3.2.5. Adjust R-gain, B-gain, to set the reading of the color analyzer to (X=280+/-5; Y=290+/-5);

3.2.6. Repeat 2~5, make sure the reading of the color analyzer to (X=280+/-5; Y=290+/-5);

3.2.7. Change the source , repeat 2-6 , make sure the WB (X=280+/-5; Y=290+/-5) 。

NOTE: For panel consistency is good and White Balance date is not need to adjust, please use default value

(4) All sources check

Connect all external generator devices to relevant inputs/outputs according to their respective test patterns format and check picture content and sound quality accordingly.

(5) DDC&EDID&HDCP test

1, Both VGA and HDMI have their own bin files in the nvram, do not: need check in the process;

2, For HDCP compliancy, it's needed to check whether the HDCP key has been well set

(6) Factory shop init

After finishing check, if the hotkey is "ON", you need init. After SHOP init, the status will be the "SHOP SET";

5、Factory Menu" Definition

The value of the chassis is OK. During the flow, the tv do not need adjust.

1) VERSION

VERSION	SOFT VERSION
	DATE
	TIME

2) WB

Item	Sub-item	Value	Note
WB	Source	TV/AV1/YPbPr...	For balance source; select for AV, YPbPr, HDMI1 and PC
	R-offset	14	R Gray balance
	G-offset	20(default)	G Gray balance
	B-offset	17	B Gray balance
	R-gain	65	R White balance
	G-gain	64(default)	G White balance
	B-gain	93	B White balance

Note: The balance sources are AV, YPbPr, HDMI1 and PC.

3) ADC

Item	Sub-item	Value	Note
ADC	Source	YPbPr	For ADC source: YPbPr, PC,
	R-offset	255	For fine tune ADC manually default
	G-offset	255	
	B-offset	255	
	R-gain	255	
	G-gain	255	
	B-gain	255	
	Auto tune	D0	Press “Right” key to do

NOTE: This unit do not need adjust the ADC

4) VOL. CURVER

Item	Sub-item	Value	Note
VOL. CURVE	VOL01	1 (default)	The value for VOL01
	VOL10	8 (default)	The value for VOL10
	VOL30	34 (default)	The value for VOL40
	VOL80	66 (default)	The value for VOL80
	VOL100	100 (default)	The value for VOL100

5) PIC. CURVER

Item	Sub-item	Value	Note
PIC. CURVE	Brightness		It has Sub-item, as table 5-1
	Contrast		It has Sub-item, as table 5-2
	Color		It has Sub-item, as table 5-3
	Tint		It has Sub-item, as table 5-4

Table 5-1

Item	Sub-item	Value TV	Value YPbPr	Value HDMI	Value VGA/USB	Note
Brightness	Brightness0	60	60	60	60	default
	Brightness25	90	114	114	114	
	Brightness50	117	131	126	128	
	Brightness75	125	137	134	135	
	Brightness100	143	143	143	143	

Table 5-2

Item	Sub-item	Value (TV/AV/S-Video)	Value YPbPr	Value HDMI	Value VGA/USB	Note
Contrast	Contrast0	87	87	87	87	default
	Contrast25	111	111	111	111	
	Contrast 50	128	115	116	128	
	Contrast 75	134	131	134	135	
	Contrast 100	143	143	143	143	

Table 5-3

Item	Sub-item	Value (TV/AV/S-Video/YPbPr/HDMI/VGA/USB)	Note
Color	Color 0	0	default
	Color 25	100	
	Color 50	160	
	Color 75	180	
	Color 100	200	

Table 5-4

Item	Sub-item	Value (TV/AV/S-Video/YPbPr /HDMI/VGA/USB)	Note
Tint	Tint 0	96	default
	Tint 30	128	
	Tint 60	160	

6) PRODUCTION

Item	Sub-item	Value	Note
PRODUCTION	FacHotkey	Off/On	OFF: hotkey is invalid On: hotkey (RETURN) is availability
	FacMode	Off/On	OFF: hotkey is invalid On: hotkey (RETURN) is availability
	WarmMode	Off/On	OFF: hotkey is invalid On: hotkey (RETURN) is availability
	PowerMode	On/Last/ Standby	On: Enter power on mode Last: Power on according to last status Standby: Enter standby mode
	ChannelPres et	1-255	Pre frequency
	AGC	165	default
	InterKey	off	default
	FailKeyChec k	off	default
	SSC ADJUST		It has Sub-item, as table 6-1

Table 6-1

Item	Sub-item	Value	Note
SSC ADJUST	SSC LVDS	Off/On	Default Off On: Open the span of LVDS with the “right” key
	LVDS Modulation	165	Change the Fre. of Modulation with the “right/left” key

	LVDS Percentage	50	Change the Amp. of Modulation with the “right/left” key
--	-----------------	----	---

7) .CONFIG

Item	Sub-item	Value	NOTE
CONFIG	ProjectID	ID	Select panel with “left/right”, restart the set to take effect;
	HotelMode	Off/On	The switch of the hotel mode
	SrcSel		It has sub-item, as table 7-1
	TvSysSel		It has sub-item, as table 7-2, there is difference between AP and LA
	AvSysSel		It has sub-item, as table 7-3
	LanguageSel		It has sub-item, as table 7-4; there is difference between AP and LA
	LogoSel	TCL/ROWA/None	TCL: Start with TCL logo ROWA: Start with ROWA logo None: Start without logo
	TunerSel		It has sub-item, as table 7-5
	ScreenSave	On/Off	On: Screen saver is availability Off: Screen saver is invalid
	Equalizer		It has sub-item, as table 7-6
	HotelMode		It has sub-item, as table 7-7

Table 7-1

Item	Sub-item	Value	NOTE
SrcSel	TV	On/Off	Source select On: It support this source; Off: It does not support this source
	AV1	On/Off	
	AV2	On/Off	
	S-Video	On/Off	
	YPbPr	On/Off	
	PC	On/Off	
	HDMI1	On/Off	

	USB	On/Off	
--	-----	--------	--

Table 7-2

Item	Sub-item(LA)	Sub-item(AP)	Value	NOTE
TvSysSel	AUTO	AUTO	On/Off	TV's color system select On: It support this system; Off: It does not support this system
	PAL	PAL	On/Off	
	PAL-M	NTSC358	On/Off	
	PAL-N	NTSC443	On/Off	
	NTSC358	SECAM	On/Off	
	NTSC443	D/K	On/Off	
	SECAM	I	On/Off	
	//////	B/G	On/Off	
	//////	M	On/Off	

Table 7-3

Item	Sub-item	Value	NOTE
AvSysSel	AUTO	On/Off	TV's color system select On: It support this system; Off: It does not support this system
	PAL	On/Off	
	PAL-M	On/Off	
	PAL-N	On/Off	
	NTSC358	On/Off	
	NTSC443	On/Off	
	SECAM	On/Off	

Table 7-4

Item	Sub-item(LA/AP1)	Sub-item(AP2)	Value	NOTE
LanguageSel	English	English	On/Off	TV's OSD language select On: It has this language; Off: It does not have this language
	Simp CHines	THAI	On/Off	
	Francese	VIETNAM	On/Off	
	Arabian	RUSSIAN	On/Off	
	Portuguese	PERSIAN	On/Off	
	Spanish		On/Off	

Table 7-5

Item	Sub-itme	Value	Note
Tunersel	Address	0	default
	VH	0	
	UHF	0	

Table 7-6

Item	Sub-item	value	Note
Equalizer	100HZ	10/20	100HZ of sound, 24D10 (10), other (20)
	300HZ	12/20	300HZ of sound, 24D10 (12), other (20)
	1KHZ	20	default
	3KHZ	20	default
	10KHZ	20	default

Table 7-5

Item	Sub-item	value	Note
HotelMode	HotelOption	On/off	Hotel mode switch
	Powerlogo	On/off	Start up logo
	Chlock	On/off	Chanel lock
	MaxVol	0-100	The max volume
	AutoSet	On/off	
	PowerPic	Normal/Soft..	The start up picture mode
	PowerVol	0-100	The start up picture mode
	PowerSrc	TV/AV	The start up source
	PowerPrgm	1-255	The start up program
	KeyLock	On/off	The key lock

8) SHOP SET

Item	Sub-item(LA)	Sub-item(AP)	Value	NOTE
SHOP SET	Volume	Volume	0-100	Shop volume value; Press "Left/Right" to change
	Pic Mode	Pic Mode	Soft/Custom/ Normal/Brightness	Shop picture mode
	SoundMode	SoundMode	Music/Movie/ NewsStereo/	Shop sound mode
	PowerMode	PowerMode	On/Standby/Last	Shop power mode
	Language	Language	English/简体中文/ Portugues	Shop language
	ColorSys	ColorSys	PAL/NTSC...	Shop Color system

	////	SoundSys	D/K, I, B/G, M,	Shop sound system
--	------	----------	-----------------	-------------------

9) NVM RESET

Item	Sub-item	Value	NOTE
NVM RESET	NVM RESET	D0	Press “Right” key to clear the value of NVM value, and restart to set default value.

10) SHOP INIT

Item	Sub-item	Value	NOTE
SHOP INIT	SHOP INIT	D0	Press “Right” key to INIT

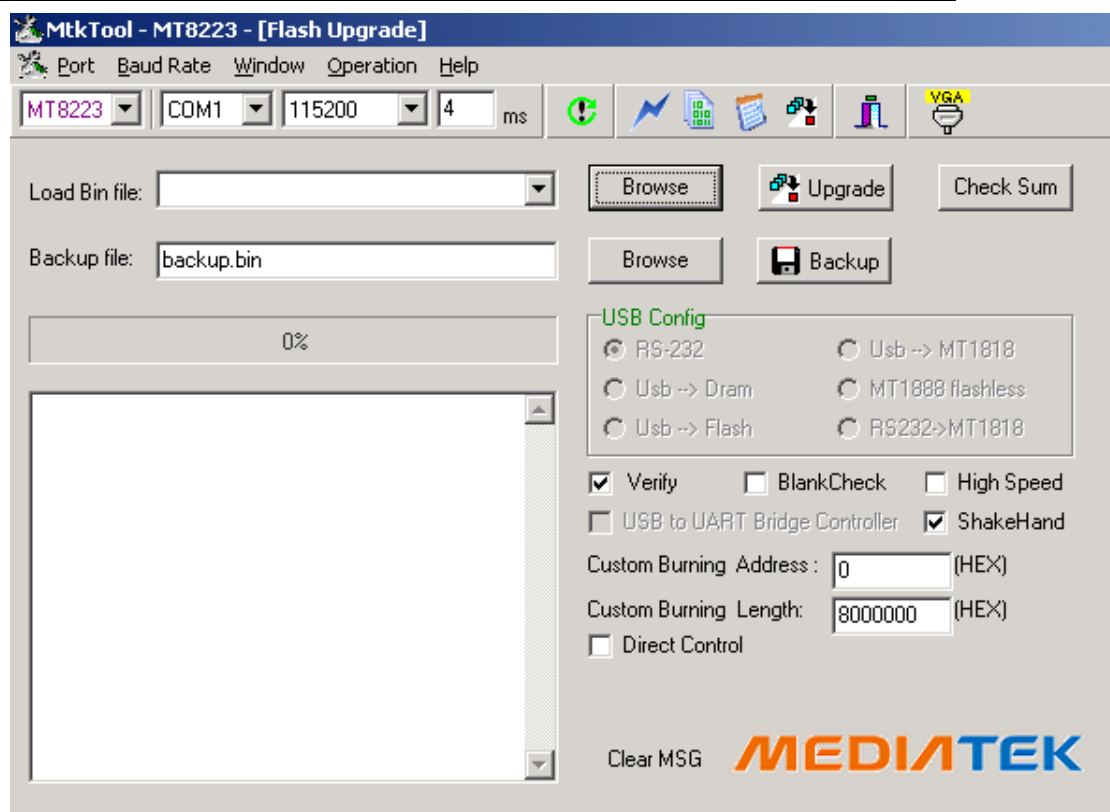
6、Chip list of software programming

Position	Chip type	Software description
U202(CP)	32M BIT FLASH	main software
U203(CP)	IC-EEPROM(32K)	EEPROM+VGA'DDC+HDMI'EDID and HDMI KEY

7、How to download FLASH SW

Prepare MTK SW tool for update.

1. Connect the PC to the serial connector on board using a special serial device (USB or COMx).
2. Provide the a correct voltage to the board
3. Start “**MTKTOOL.exe**” application under MTKxx folder, and set the parameters as below picture(notice:select MT8223 chassiss):



4. Press “Browse” button to select the corresponding SW bin file to upload
5. Press “Upgrade” button to start downloading the SW and wait the gauge displayed “100%” that means the SW has been successfully downloaded.
In the meanwhile, all operations such erasing flash and so... are parsed into the debug window script.
6. Once the SW is downloaded, switch-off/on the chassis board and wait few seconds for eeprom update.

2) Software upgrade through USB disk

A Please ensure the software you are using has a correct file name. The name is “mt23lf”;

B Insert the USB disk to the USB socket of the set for which you are going to upgrade program.

C, Enter the **Menu**, select **SW UPDATE** of **APP**, press ► button of remote control to start upgrade.

8、Panel and region select

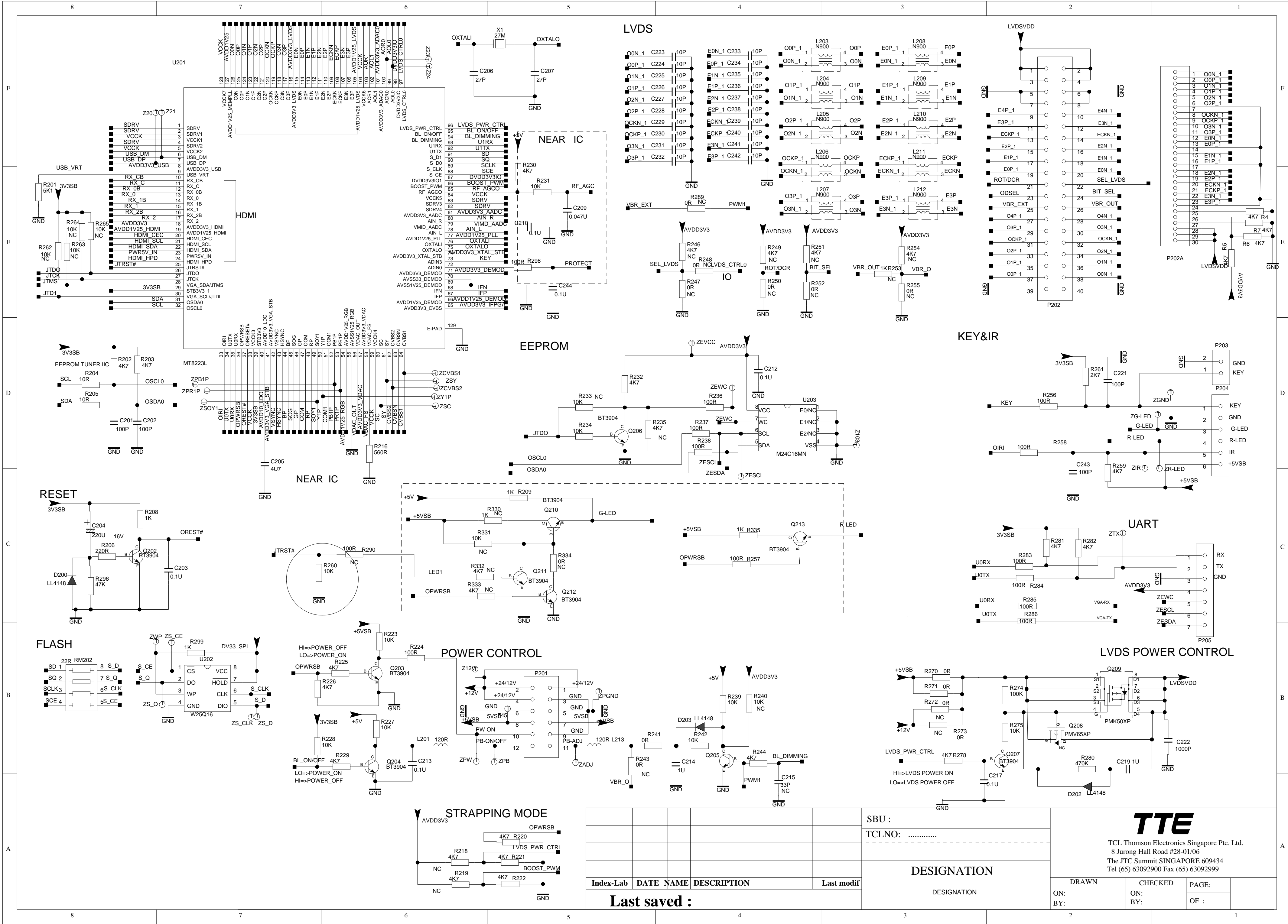
- 1, Set projectID by factory data;

2, Set projected by serial connector;

Changing EEPROM by MTKTOOLS' s“R/W register”, the address is 00000009. The corresponding data is as follow in the version .

Project ID	LCD24-LA/AP	IVO26-LA/AP	SAM32-LA/AP
NVM DATA	01/02	03/04	05/06
Panel 4A-	LCD24T-CM1	LCD26T-IV1	LCD32T-SS6

THIS DRAWING CANNOT BE COMMUNICATED TO UNAUTHORIZED PERSONS COPIED UNLES S PERMITTED IN WRITING

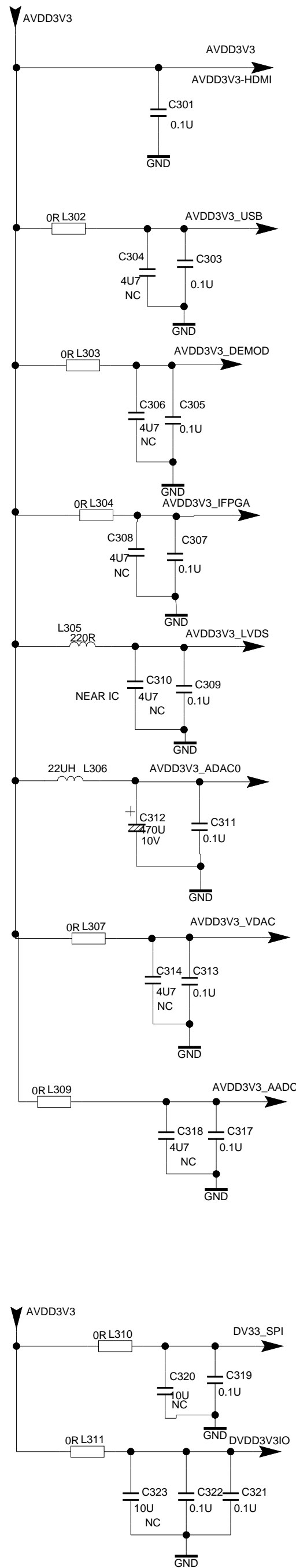


					GND		<div><div>TTE</div><div>TCL Thomson Electronics Singapore Pte. Ltd. 8 Jurong Hall Road #28-01/06 The JTC Summit SINGAPORE 609434 Tel (65) 63092900 Fax (65) 63092999</div></div>					
					SBU :							
					TCLNO:							

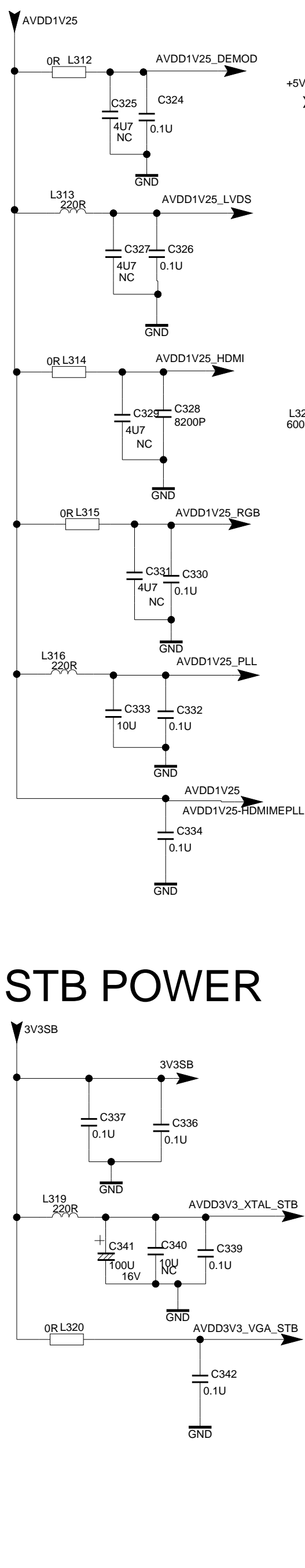
					DESIGNATION							
					DESIGNATION							
							DRAWN		CHECKED		PAGE:	
							ON:		ON:		OF :	
							BY:		BY:			

Index-Lab	DATE	NAME	DESCRIPTION	Last modif
Last saved :				

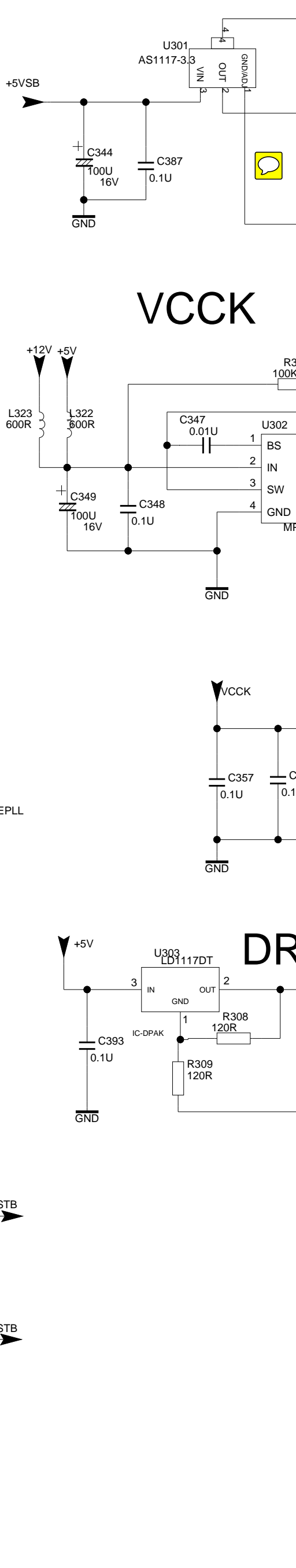
3V3 POWER



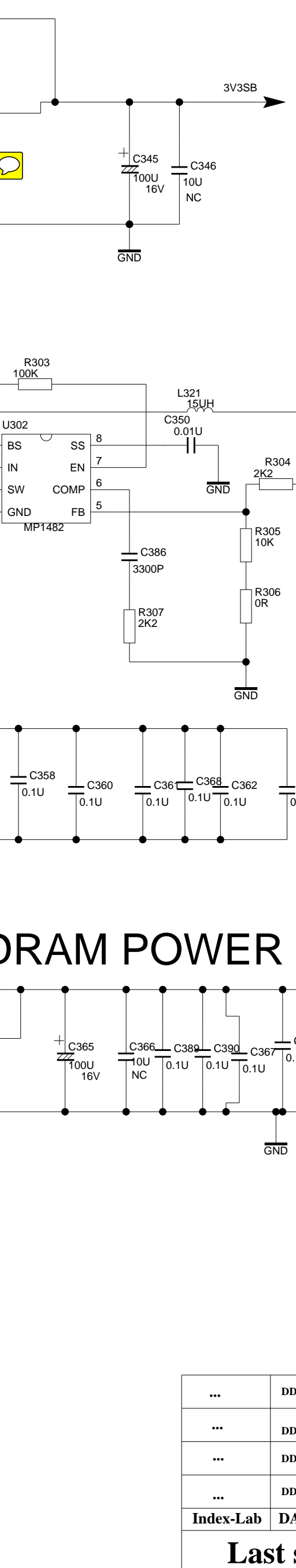
1V25 POWER



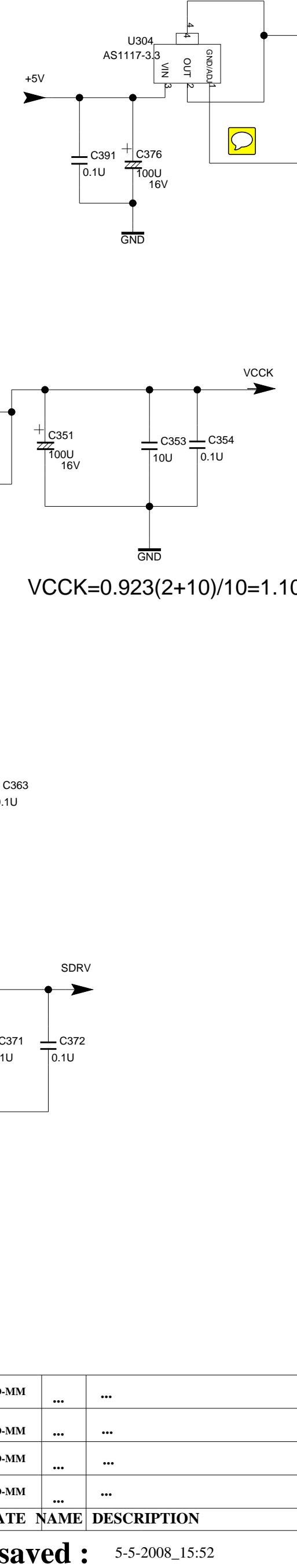
STANDBT POWER



3V3SB



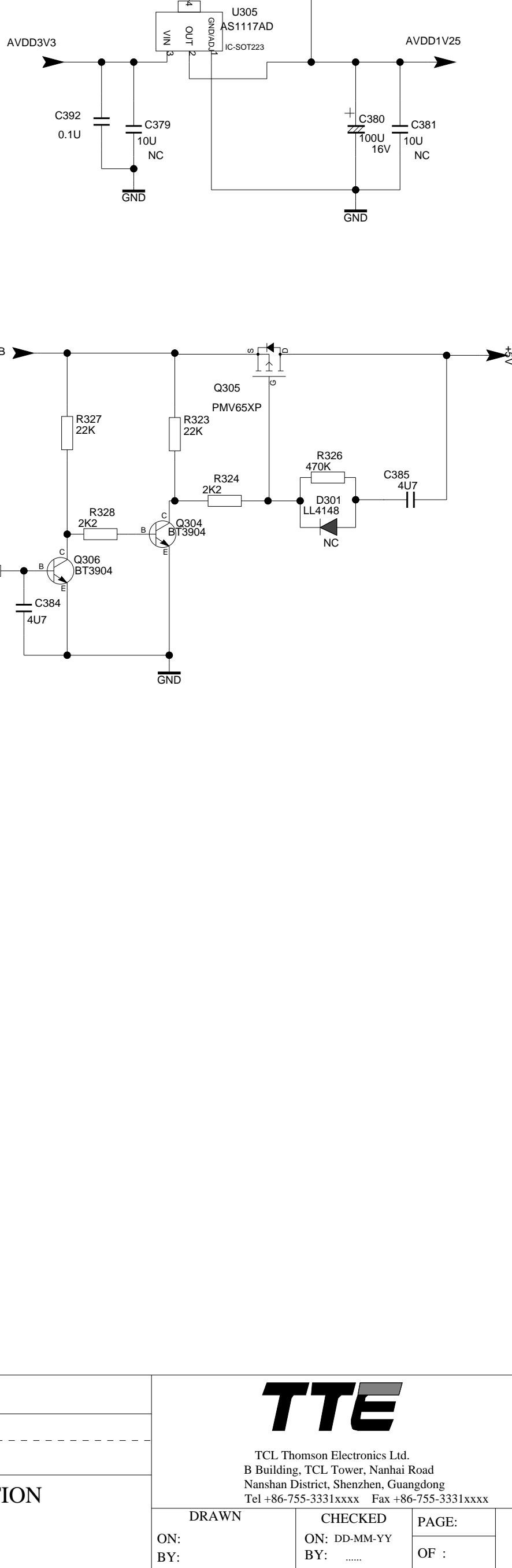
ANALOG POWER



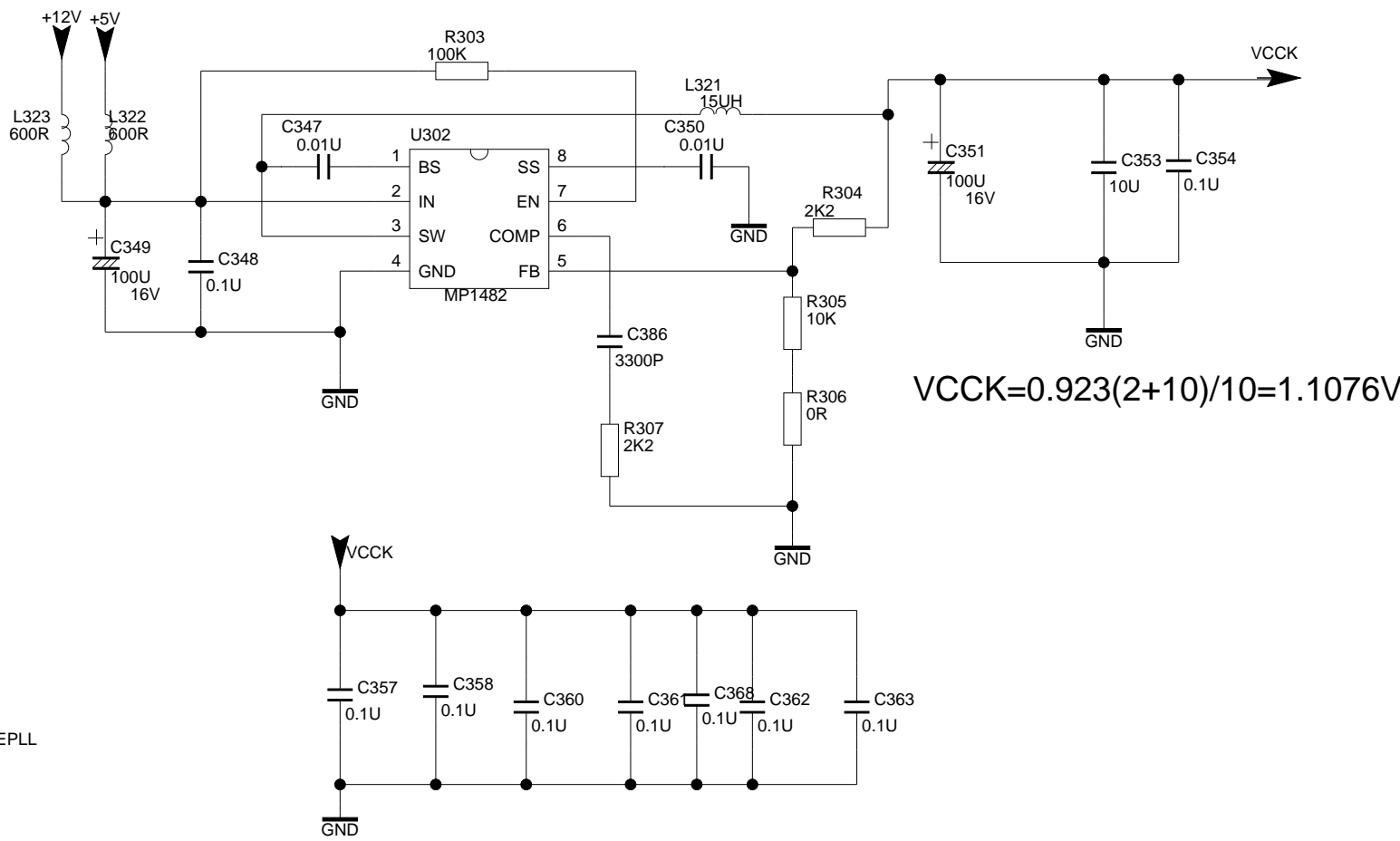
AVDD3V3



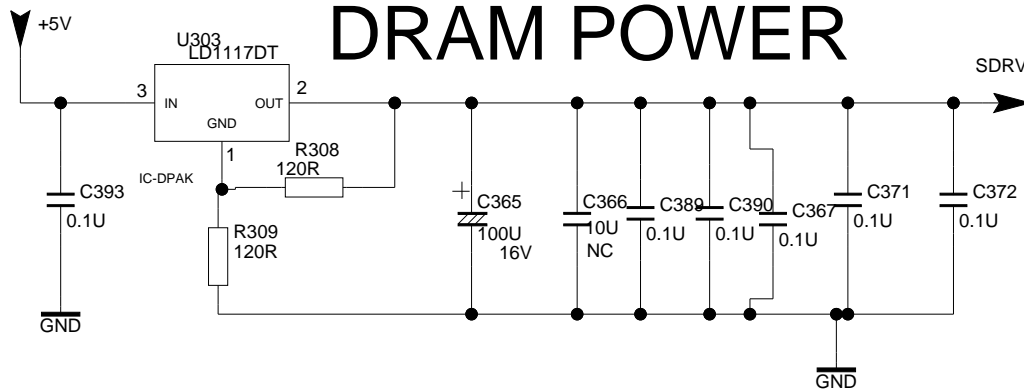
ANALOG POWER 1V25



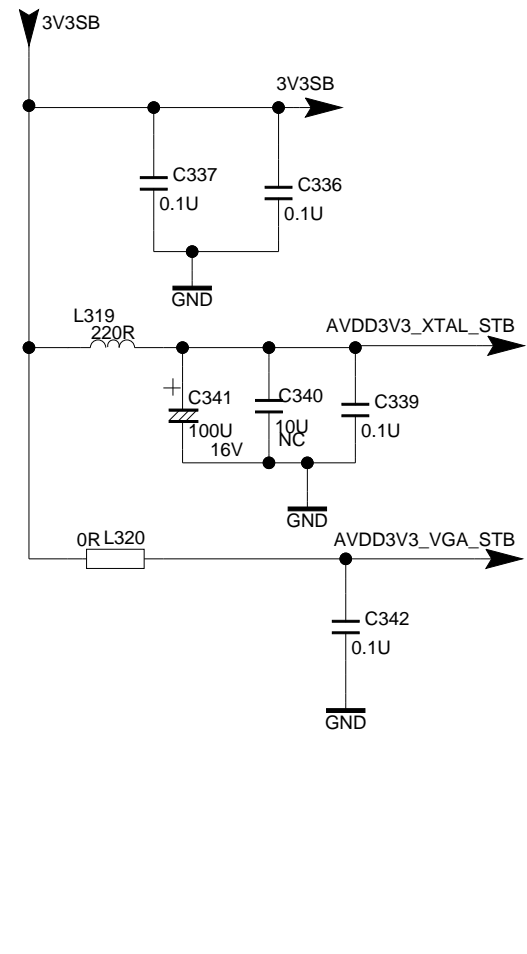
VCCK



DRAM POWER



STB POWER



THIS DRAWING CANNOT BE COMMUNICATED TO UNAUTHORIZED PERSONS COPIED UNLESS S PERMITTED IN WRITING

...	DD-MM	SBU :
...	DD-MM	TCLNO:
...	DD-MM
...	DD-MM	DESIGNATION
Index-Lab	DATE	NAME	DESCRIPTION	Last modif

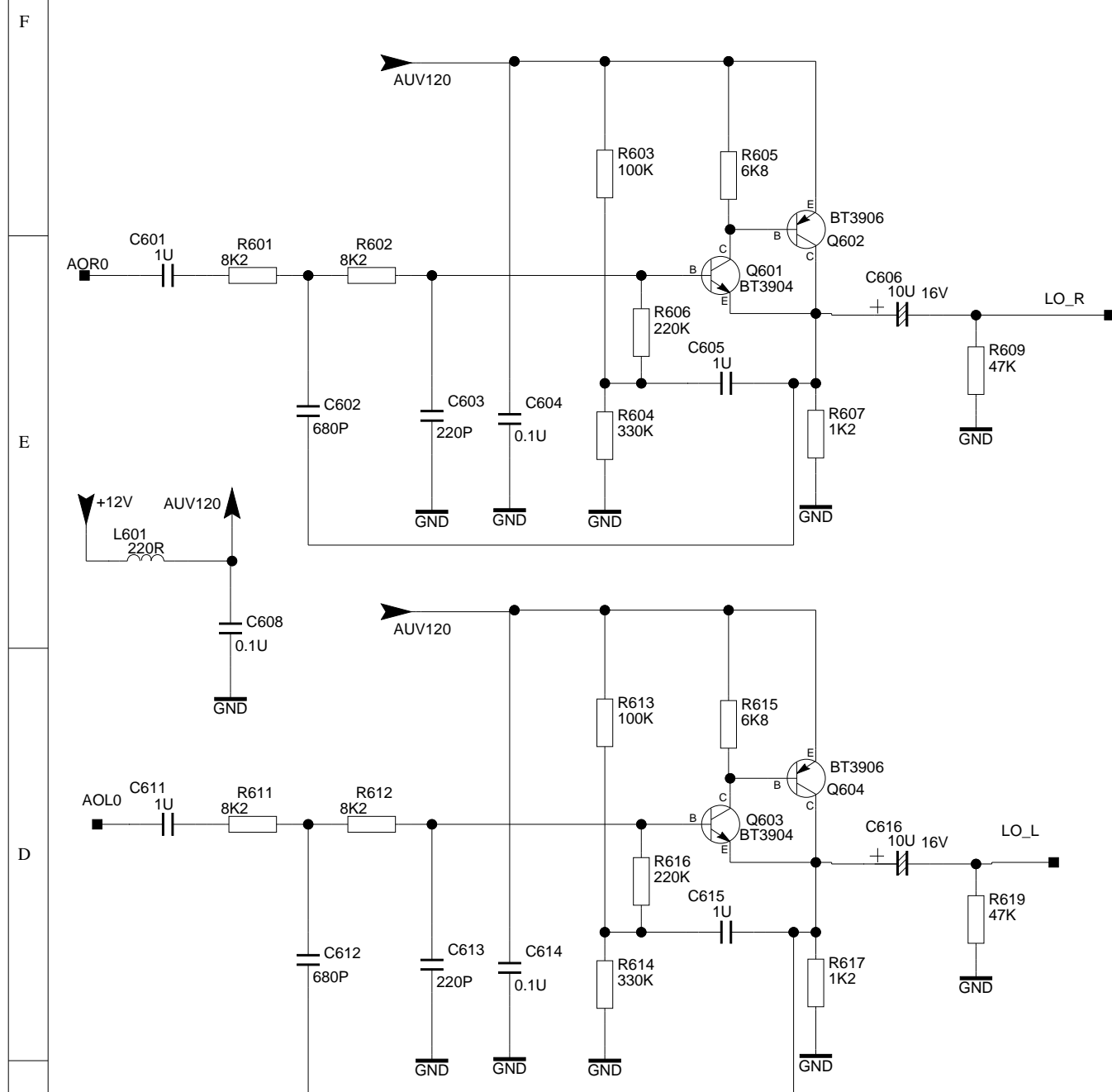
Last saved : 5-5-2008_15:52

TTE

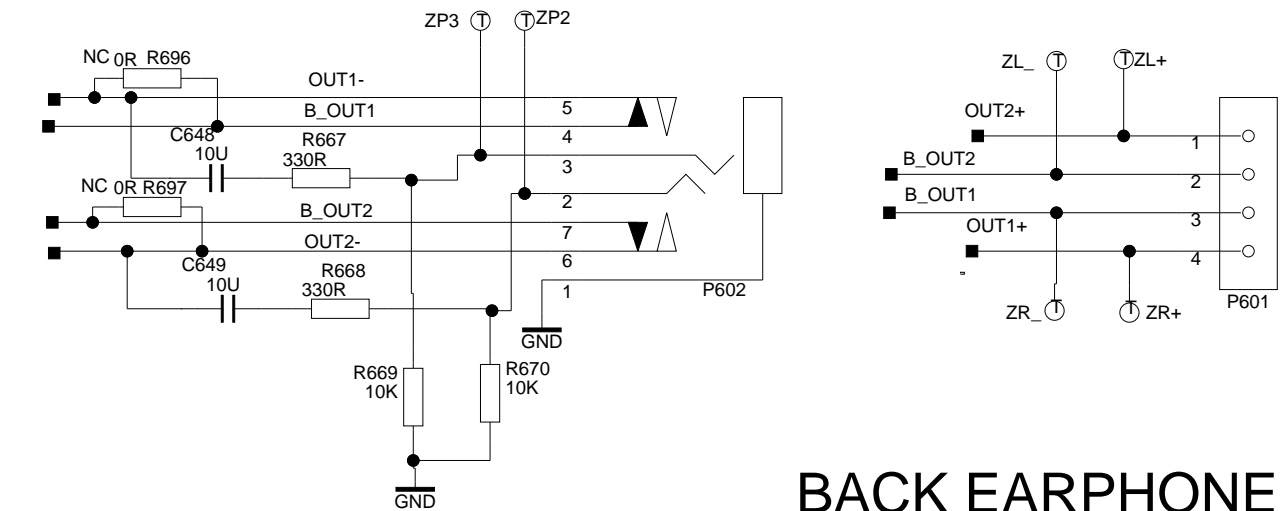
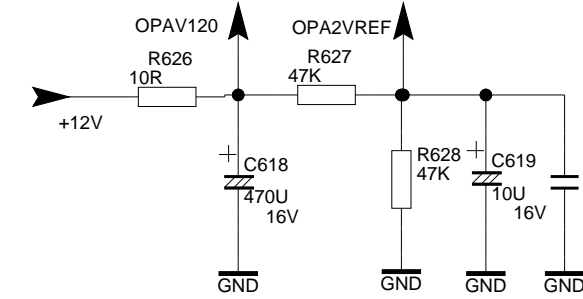
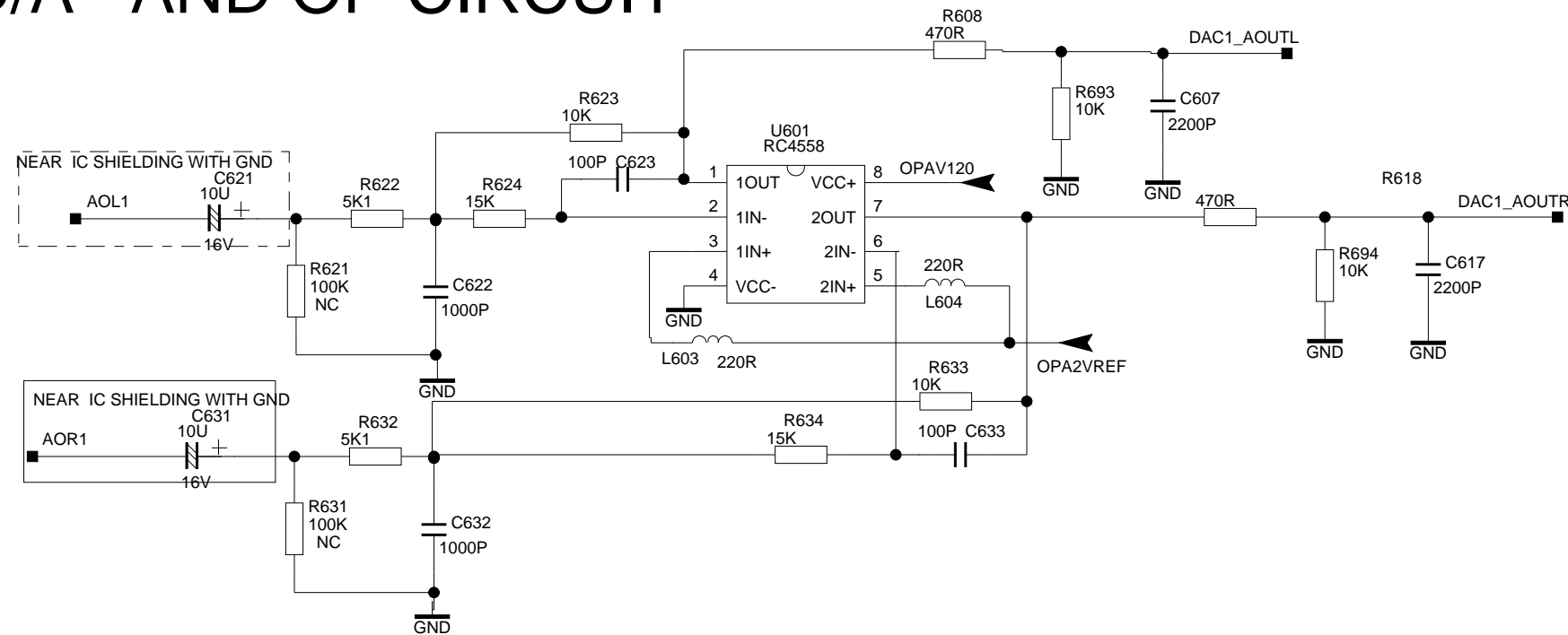
TCL Thomson Electronics Ltd.
B Building, TCL Tower, Nanhai Road
Nanshan District, Shenzhen, Guangdong
Tel +86-755-3331xxxx Fax +86-755-3331xxxx

DRAWN	CHECKED	PAGE:
ON: DD-MM-YY	BY:	OF :

D/A CIRCUIT



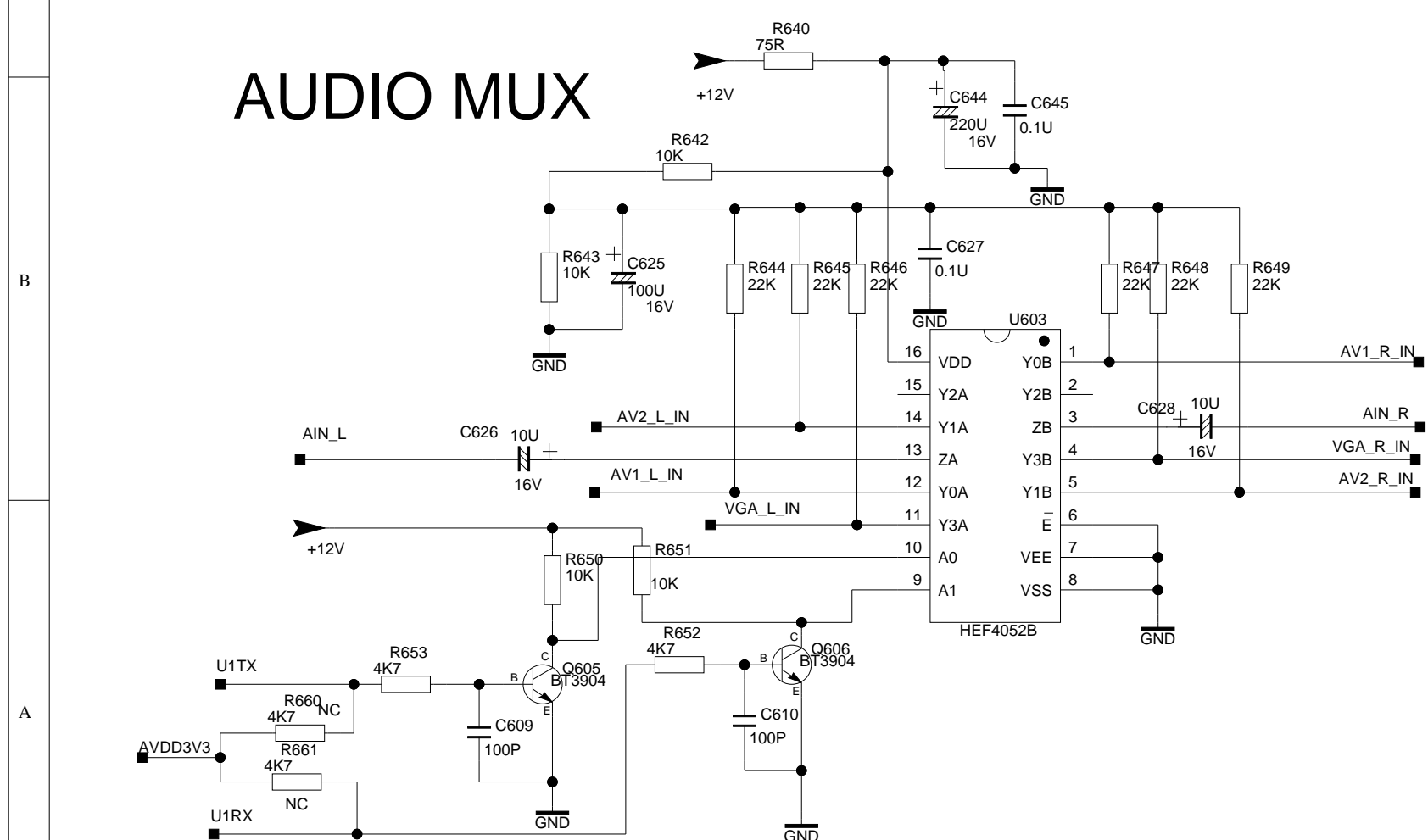
D/A AND OP CIRCUIT



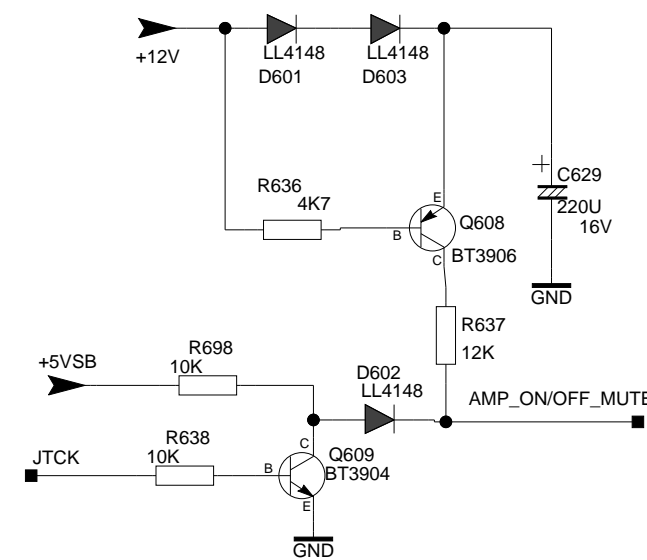
BACK EARPHONE

AUDIO_SPEAKER

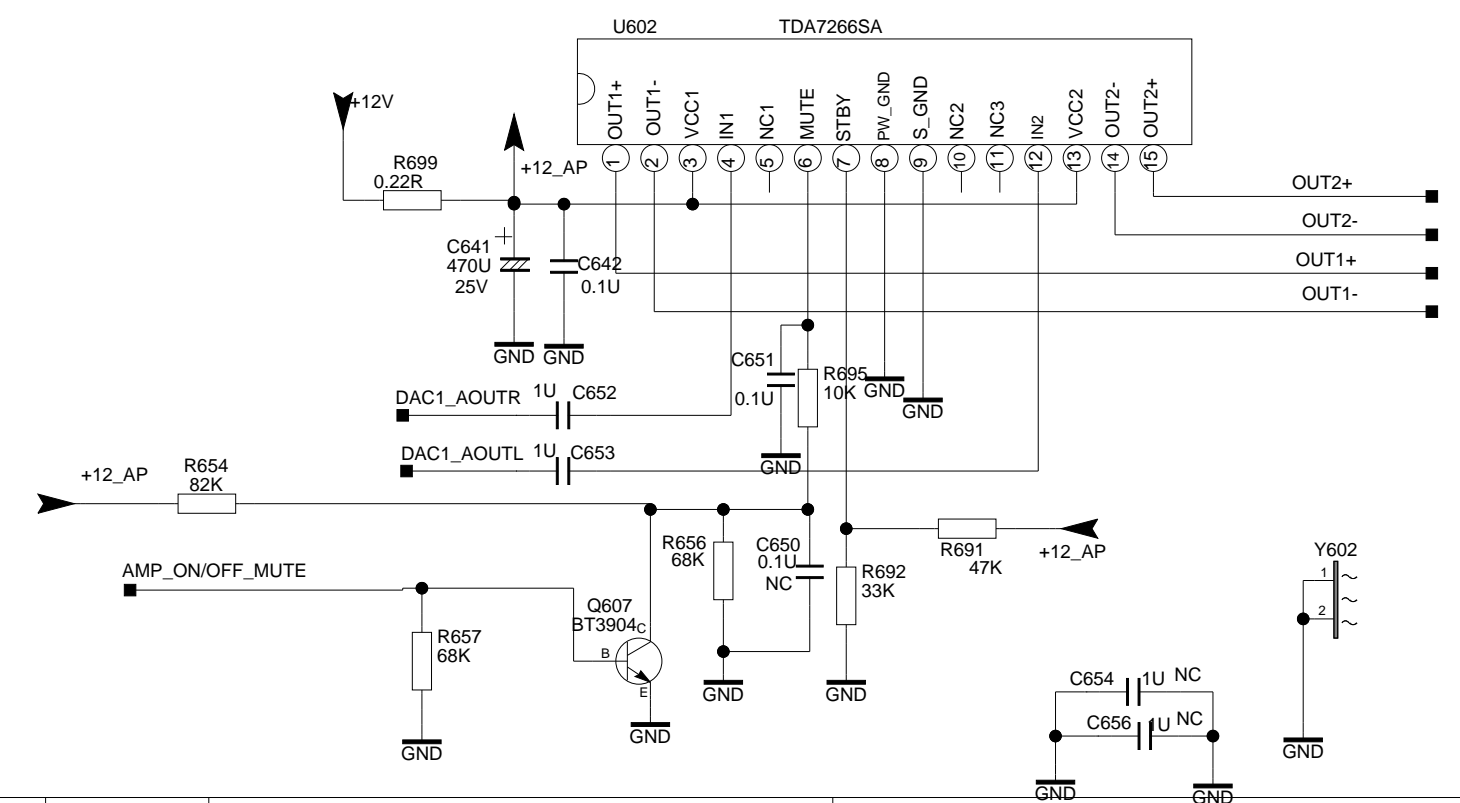
AUDIO MUX



AUDIO MUTE CIRCUIT



...	DD-MM
...	DD-MM
...	DD-MM
...	DD-MM
Index-Lab	DATE	NAME	DESCRIPTION	Last modified
Last saved : 5-5-2008_15:52				

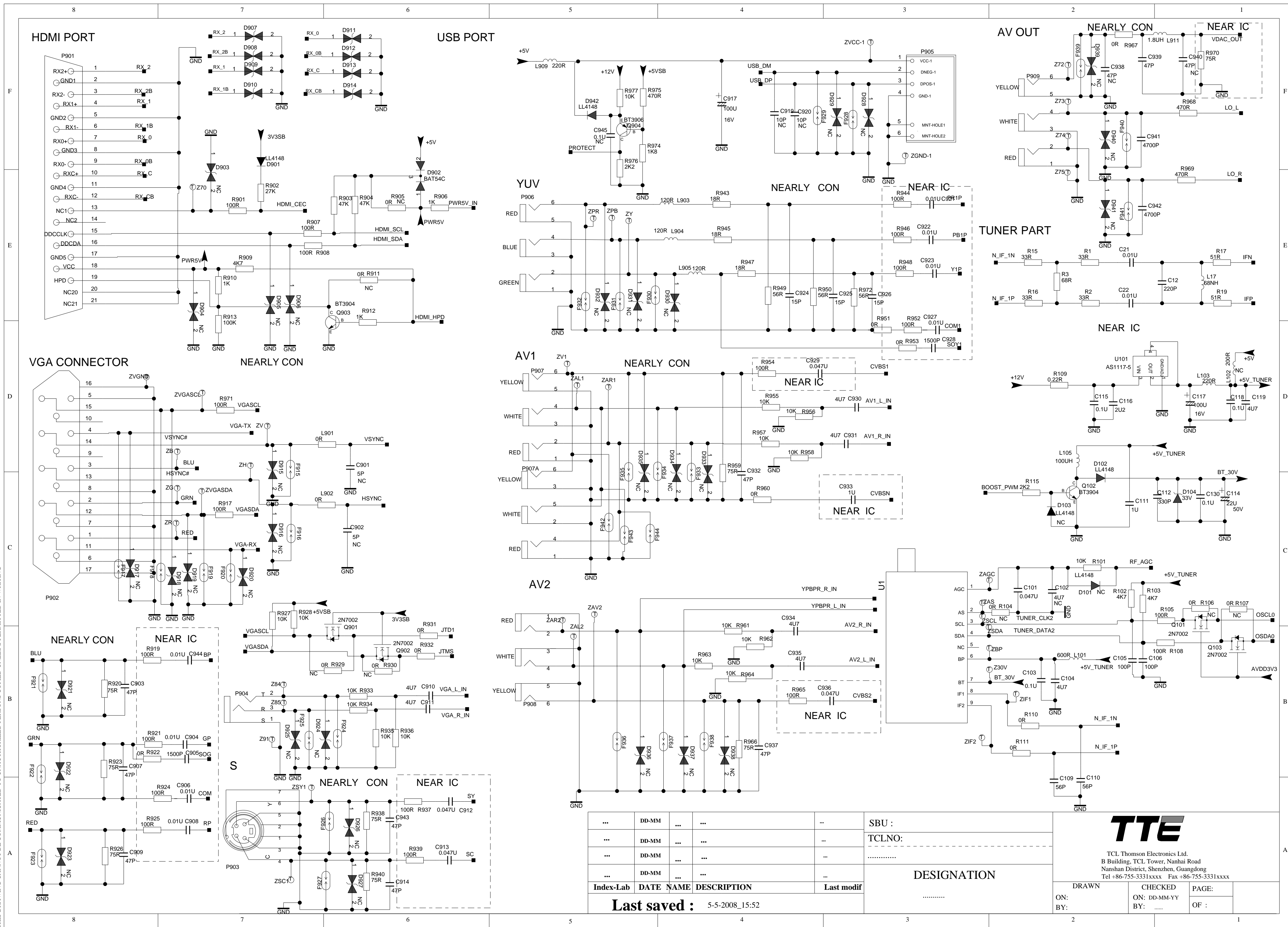


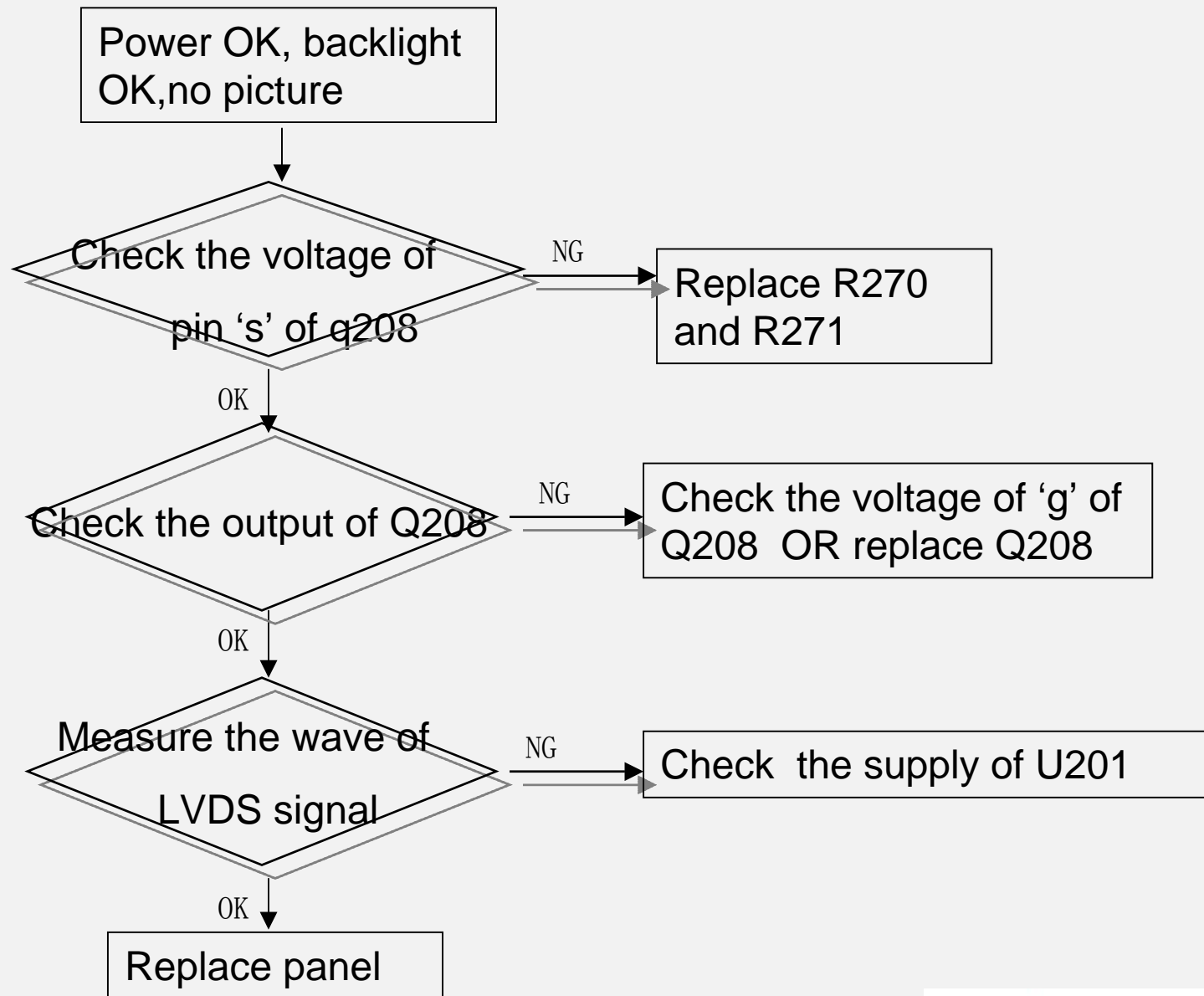
TCL Thomson Electronics Ltd.
B Building, TCL Tower, Nanhai Road
Nanshan District, Shenzhen, Guangdong
Tel +86-755-3331xxxx Fax +86-755-3331xxxx

DRAWN	CHECKED	PAGE:
ON:	ON: DD-MM-YY	OF :
BY:	BY:	

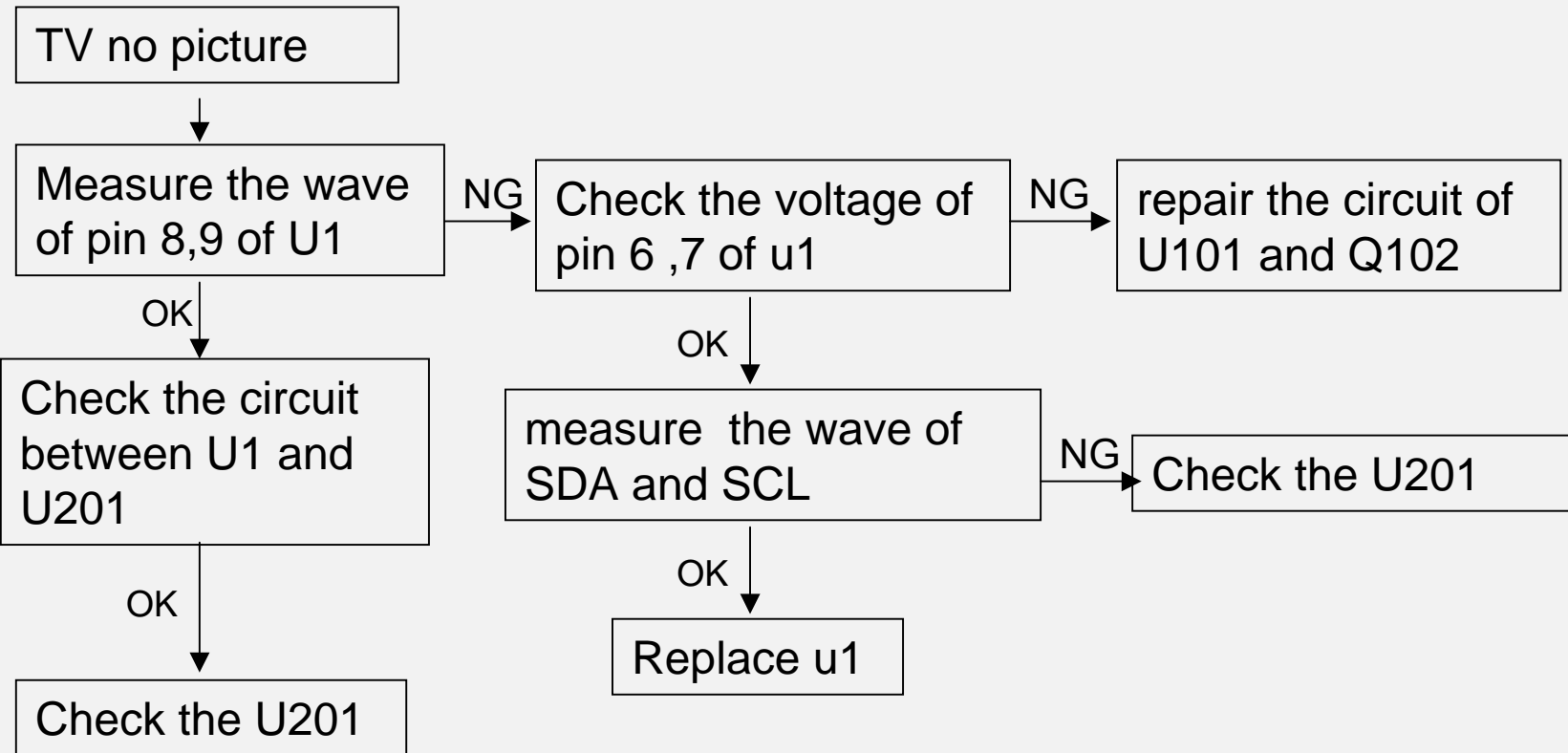
THIS DRAWING CANNOT BE COMMUNICATED TO UNAUTHORIZED PERSONS COPIED UNLESS PERMITTED IN WRITING

THIS DRAWING CANNOT BE COMMUNICATED TO UNAUTHORIZED PERSONS COPIED UNLESS PERMITTED IN WRITING

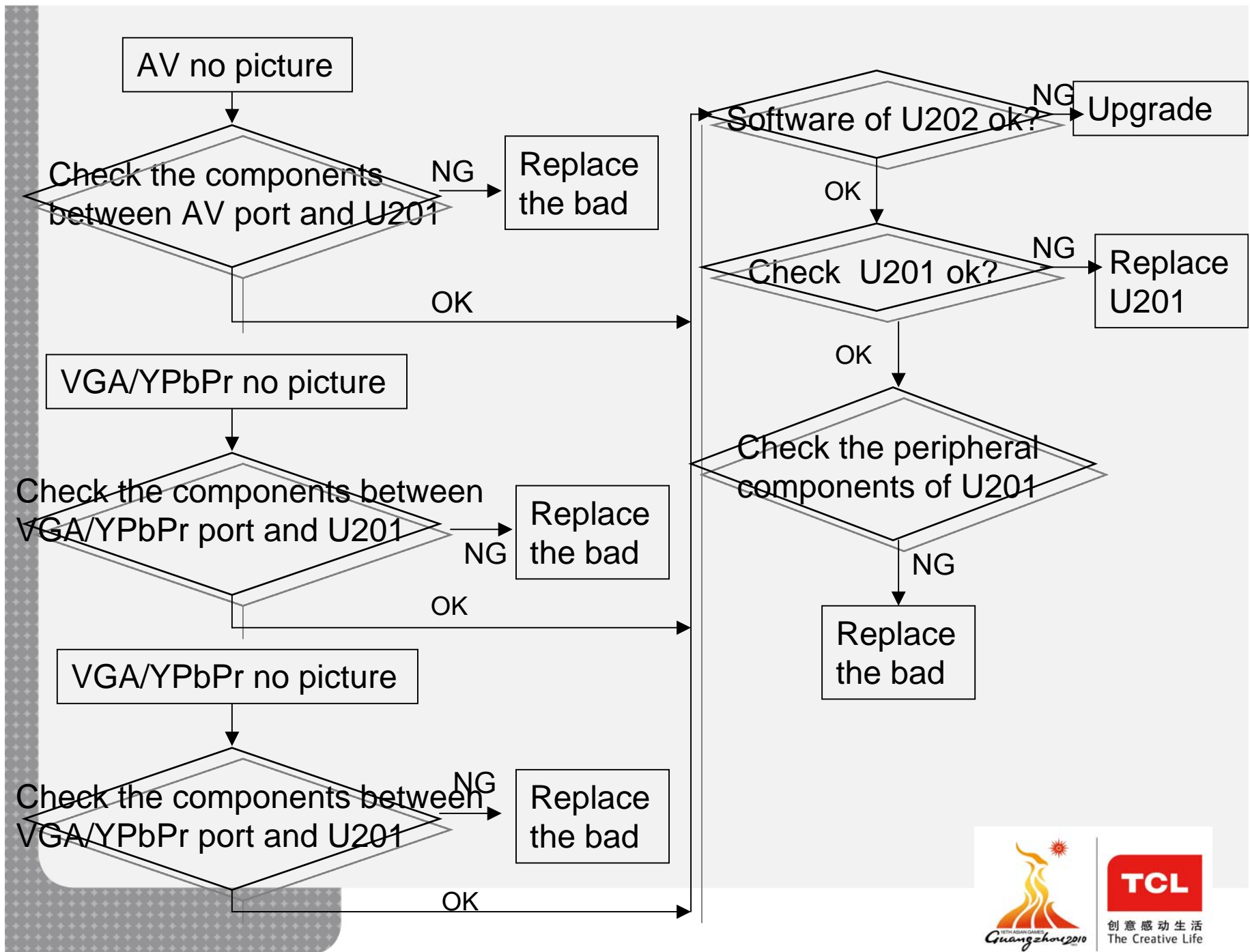


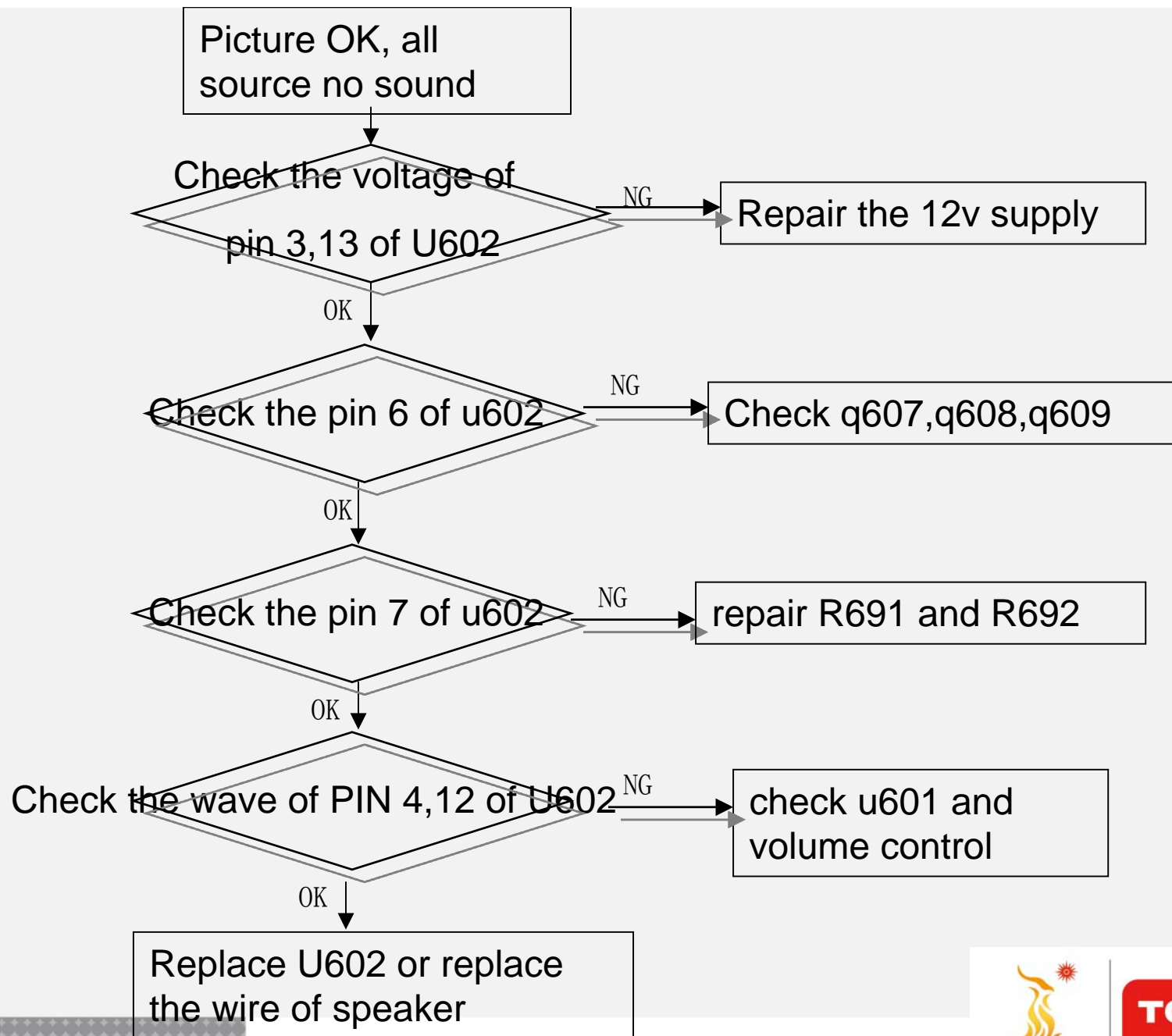


广州2010年亚运会合作伙伴

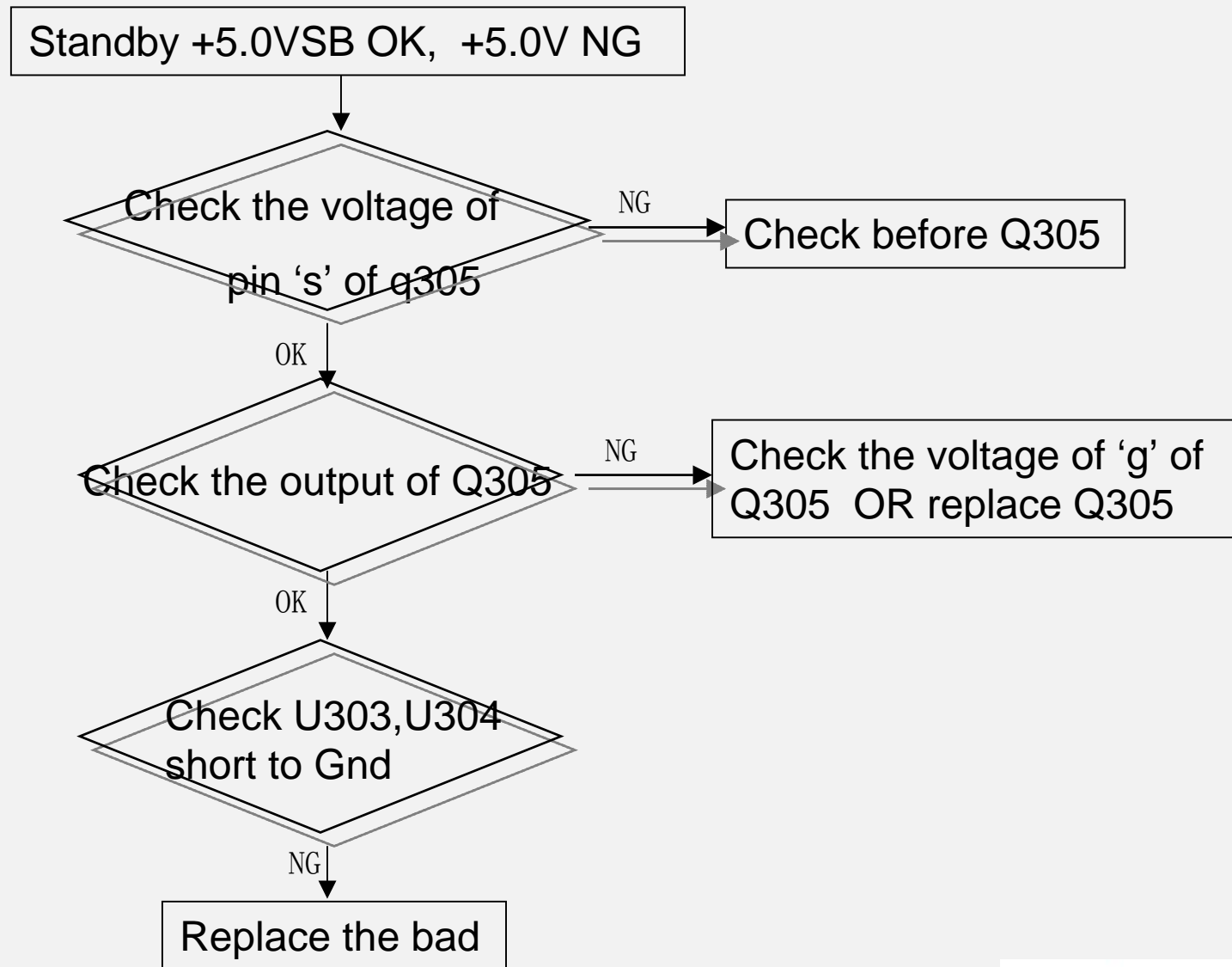


广州2010年亚运会合作伙伴

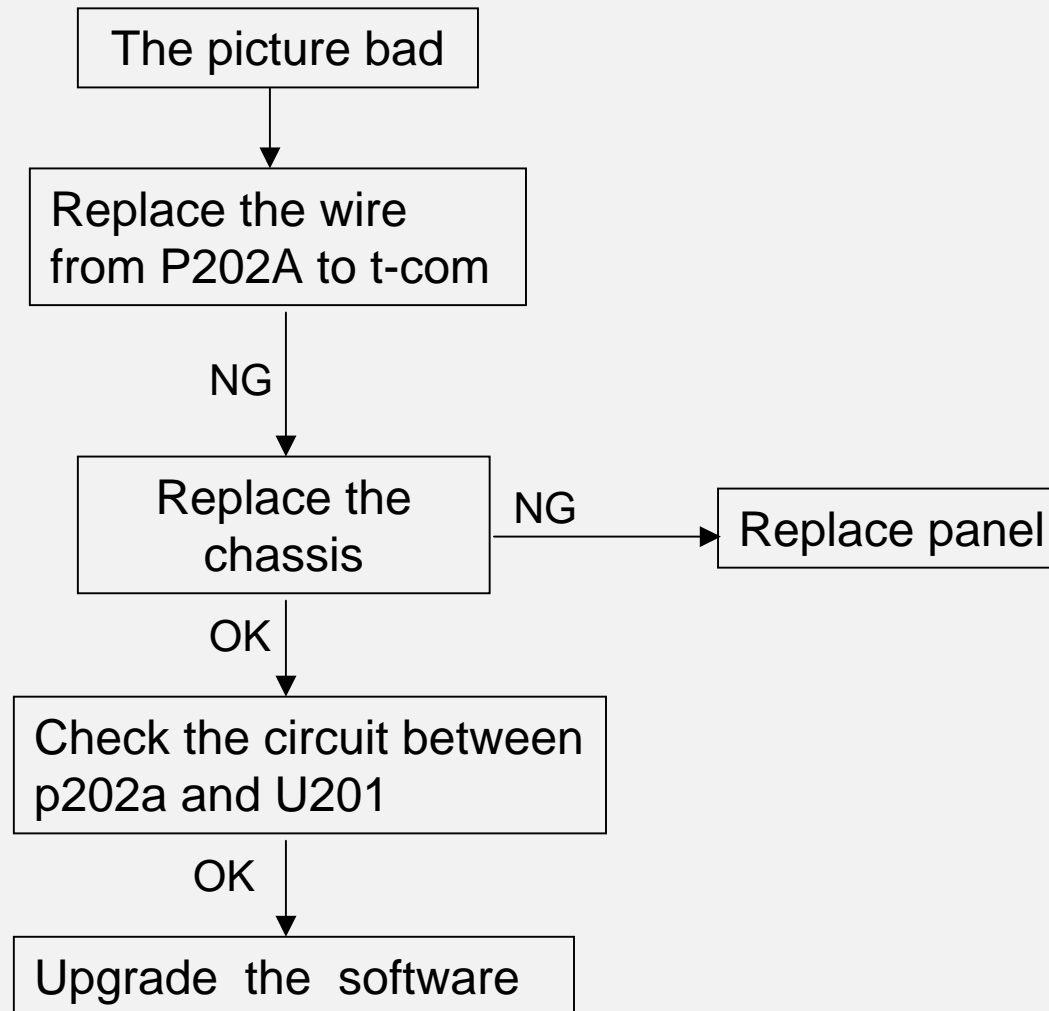


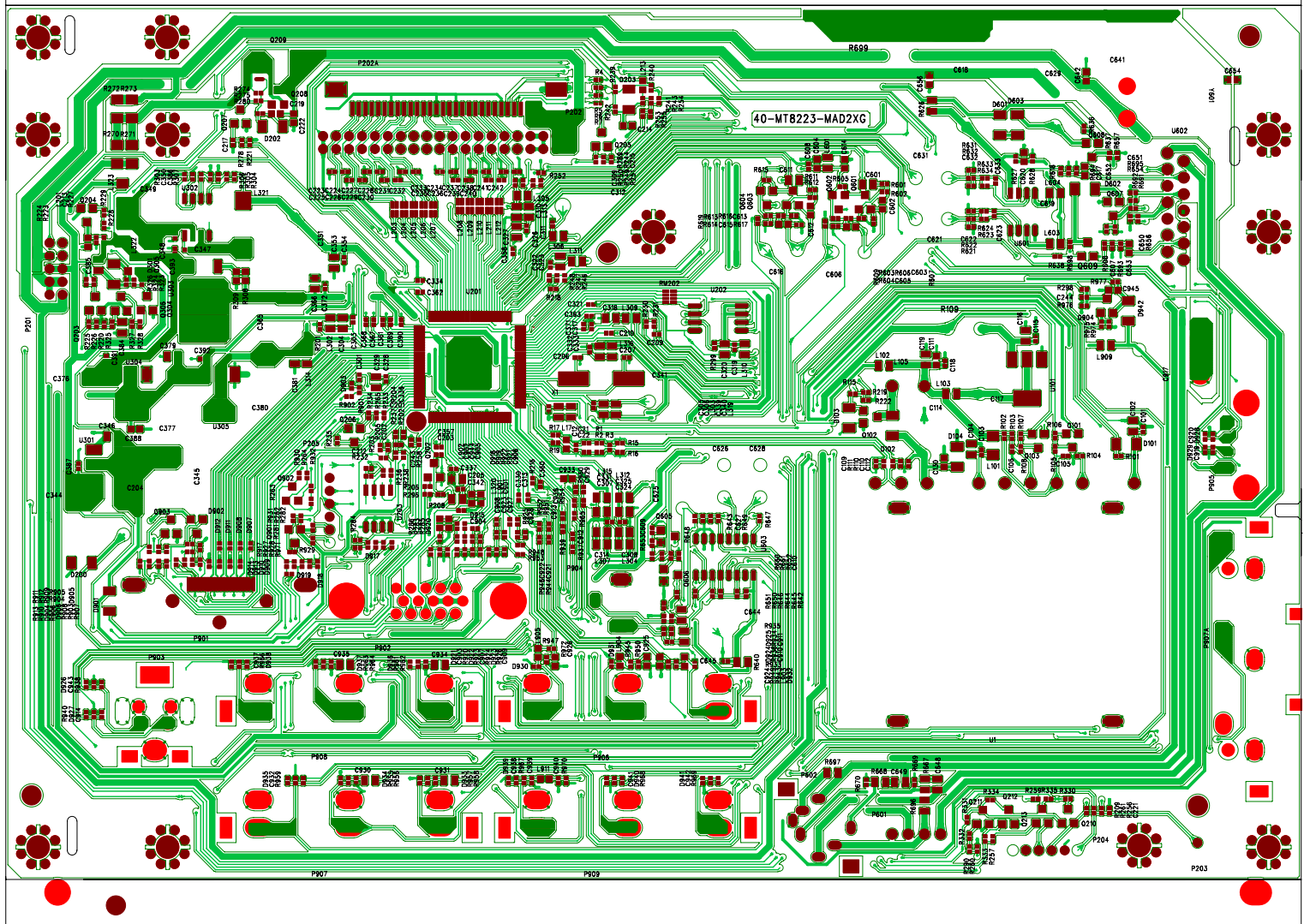


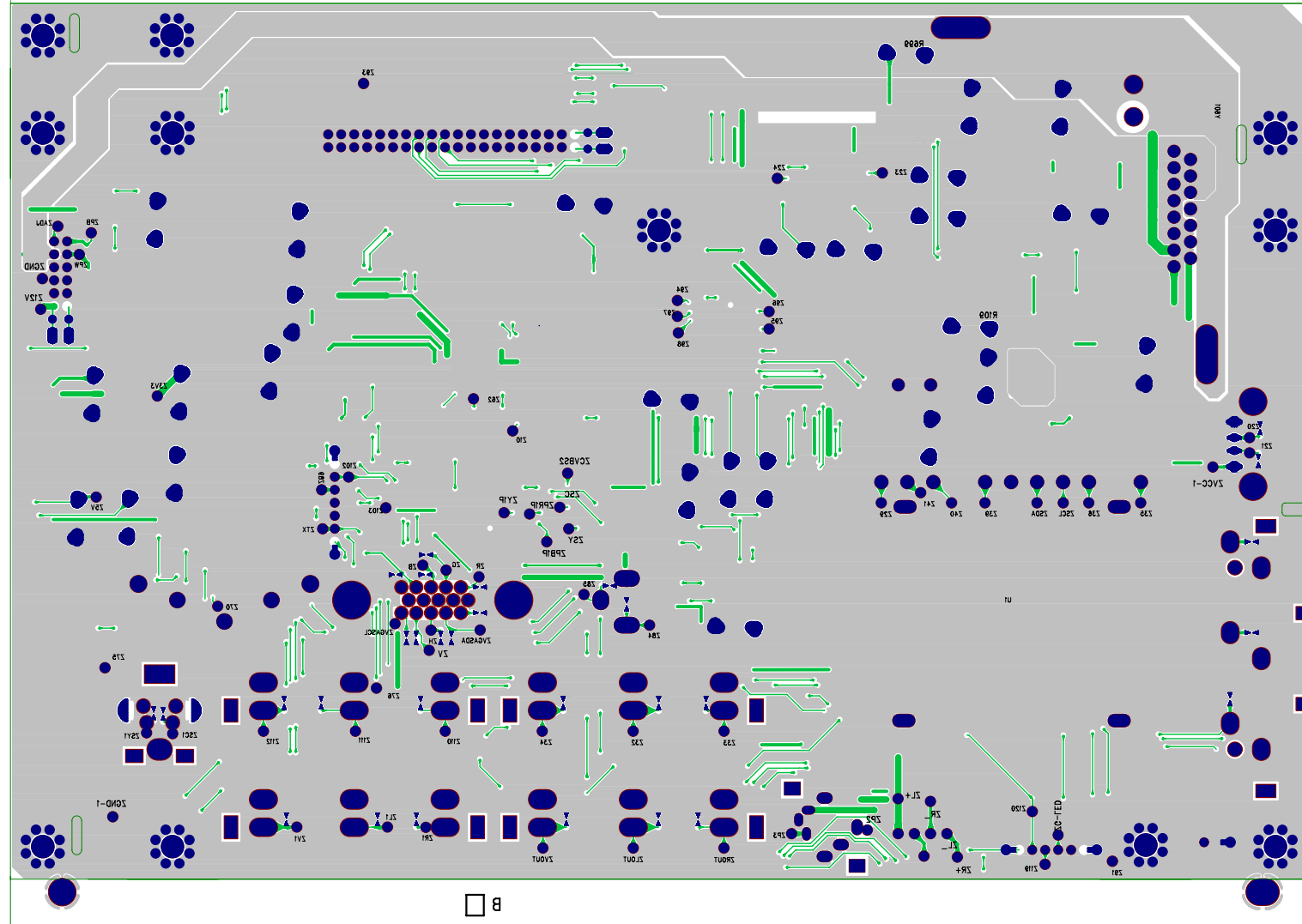
广州2010年亚运会合作伙伴



广州2010年亚运会合作伙伴







2010.06.09			
MATERIAL BOM PRINT			
MATERIAL NO. :		H3-HD10S7A-SV0	
MATERIAL NAME:		L32D10/MT23-LA/SS6	
WERK:1034		BOM APPLICATION:PP01	
parent	child	description	BOM text
H3-HD10S7A-SV0	T6-528W34-AAC0X	RCAASY	
T6-528W34-AAC0X	06-528W34-A000X	RCT MS719/HY76/MT23 JY-T04003-004	
H3-HD10S7A-SV0	T8-32LA7A-MA1	ASS'Y - MAIN BDASY	
T8-32LA7A-MA1	07-380FF5-NF1G	TUNER A% BULK NTSC 38MHZ F	U1
T8-32LA7A-MA1	09-55C33V-DTX	SMD.DIODE BZV55-C33	D104
T8-32LA7A-MA1	09-BAT54C-STX	SMD.DIODE BAT54C+215	D902
T8-32LA7A-MA1	09-LL4148-ATX	SMD. SWITCHING DIODE LL4148	D603
T8-32LA7A-MA1	09-LL4148-ATX	SMD. SWITCHING DIODE LL4148	D102
T8-32LA7A-MA1	09-LL4148-ATX	SMD. SWITCHING DIODE LL4148	D901
T8-32LA7A-MA1	09-LL4148-ATX	SMD. SWITCHING DIODE LL4148	D602
T8-32LA7A-MA1	09-LL4148-ATX	SMD. SWITCHING DIODE LL4148	D200
T8-32LA7A-MA1	09-LL4148-ATX	SMD. SWITCHING DIODE LL4148	D203
T8-32LA7A-MA1	09-LL4148-ATX	SMD. SWITCHING DIODE LL4148	D601
T8-32LA7A-MA1	09-LL4148-ATX	SMD. SWITCHING DIODE LL4148	D202
T8-32LA7A-MA1	09-LL4148-ATX	SMD. SWITCHING DIODE LL4148	D942
T8-32LA7A-MA1	12-2N7002-OBX	MOSFET-SMD N 60V 0.3A 0.83W SOT23	Q101
T8-32LA7A-MA1	12-2N7002-OBX	MOSFET-SMD N 60V 0.3A 0.83W SOT23	Q103
T8-32LA7A-MA1	12-2N7002-OBX	MOSFET-SMD N 60V 0.3A 0.83W SOT23	Q901
T8-32LA7A-MA1	12-2N7002-OBX	MOSFET-SMD N 60V 0.3A 0.83W SOT23	Q902
T8-32LA7A-MA1	12-BT3904-OBX	TR-SMD NPN 40VV 200MA A 300HZ 0.25W	Q605
T8-32LA7A-MA1	12-BT3904-OBX	TR-SMD NPN 40VV 200MA A 300HZ 0.25W	Q306
T8-32LA7A-MA1	12-BT3904-OBX	TR-SMD NPN 40VV 200MA A 300HZ 0.25W	Q304
T8-32LA7A-MA1	12-BT3904-OBX	TR-SMD NPN 40VV 200MA A 300HZ 0.25W	Q202
T8-32LA7A-MA1	12-BT3904-OBX	TR-SMD NPN 40VV 200MA A 300HZ 0.25W	Q206
T8-32LA7A-MA1	12-BT3904-OBX	TR-SMD NPN 40VV 200MA A 300HZ 0.25W	Q205
T8-32LA7A-MA1	12-BT3904-OBX	TR-SMD NPN 40VV 200MA A 300HZ 0.25W	Q203
T8-32LA7A-MA1	12-BT3904-OBX	TR-SMD NPN 40VV 200MA A 300HZ 0.25W	Q213
T8-32LA7A-MA1	12-BT3904-OBX	TR-SMD NPN 40VV 200MA A 300HZ 0.25W	Q204
T8-32LA7A-MA1	12-BT3904-OBX	TR-SMD NPN 40VV 200MA A 300HZ 0.25W	Q207
T8-32LA7A-MA1	12-BT3904-OBX	TR-SMD NPN 40VV 200MA A 300HZ 0.25W	Q609
T8-32LA7A-MA1	12-BT3904-OBX	TR-SMD NPN 40VV 200MA A 300HZ 0.25W	Q102
T8-32LA7A-MA1	12-BT3904-OBX	TR-SMD NPN 40VV 200MA A 300HZ 0.25W	Q606
T8-32LA7A-MA1	12-BT3904-OBX	TR-SMD NPN 40VV 200MA A 300HZ 0.25W	Q603
T8-32LA7A-MA1	12-BT3904-OBX	TR-SMD NPN 40VV 200MA A 300HZ 0.25W	Q607
T8-32LA7A-MA1	12-BT3904-OBX	TR-SMD NPN 40VV 200MA A 300HZ 0.25W	Q601
T8-32LA7A-MA1	12-BT3904-OBX	TR-SMD NPN 40VV 200MA A 300HZ 0.25W	Q903
T8-32LA7A-MA1	12-BT3906-OBX	TR-SMD PNP 40V 200MIO A 250MHZ	Q904
T8-32LA7A-MA1	12-BT3906-OBX	TR-SMD PNP 40V 200MIO A 250MHZ	Q602
T8-32LA7A-MA1	12-BT3906-OBX	TR-SMD PNP 40V 200MIO A 250MHZ	Q604
T8-32LA7A-MA1	12-BT3906-OBX	TR-SMD PNP 40V 200MIO A 250MHZ	Q608
T8-32LA7A-MA1	12-MK50XP-OBX	MOSFET-SMD P 20V 7.9A 5W S08	Q209
T8-32LA7A-MA1	12-MV65XP-OBX	MOSFET-SMD P 20V 3.9A 1.92W SOT23	Q305
T8-32LA7A-MA1	13-AS1117-33B	IC 3.3V SOT-223 AS1117-33 CX	U301
T8-32LA7A-MA1	13-AS1117-33B	IC 3.3V SOT-223 AS1117-33 CX	U304
T8-32LA7A-MA1	13-AS1117-50B	IC 5V SOT-223 AS1117-50 CX	U101
T8-32LA7A-MA1	13-AS1117-ADB	IC AS1117-ADX	U305
T8-32LA7A-MA1	13-AS4558-00B	IC AS4558M	U601
T8-32LA7A-MA1	13-DA7266-SAS	TCL13-DA7266-SAS= IC TDA7266SA R=N	U602
T8-32LA7A-MA1	13-EF4052-BTB	TCL13-EF4052-BTB= IC HEF4052BT (D)	U603
T8-32LA7A-MA1	13-LD1117-DTB	IC-REGULADJ LD1117DT R=Y	U303

T8-32LA7A-MA1	13-M24C32-MNB	IC-EEPROM M24C32-WMN6 R=N	U203 (CP)
T8-32LA7A-MA1	13-MP1482-DSB	IC DC RECTIFIED STEP-DOWN CONVERTER	U302
T8-32LA7A-MA1	13-MT8223-L0B	OPTICOU P MT23 IC TRAY QFP 128	U201
T8-32LA7A-MA1	13-W25Q32-VSB	IC MT23 32M BIT FLASH STICK SS	U202 (CP)
T8-32LA7A-MA1	18-FG0180-JSX	RMOF 180HM +/-5% 2W R=Y	R109
T8-32LA7A-MA1	18-RG0228-JSX	RESISTOR WIRE WOUND 0.220HM +/-5%	R699
T8-32LA7A-MA1	19-AB0000-JTX	RES SMD 0 OHM 1/10W +/-5% 0603	L201
T8-32LA7A-MA1	19-AB0000-JTX	RES SMD 0 OHM 1/10W +/-5% 0603	L213
T8-32LA7A-MA1	19-AB0121-FTX	SMD. RES 120 OHM 1/10W +/-1% 0603	R309
T8-32LA7A-MA1	19-AB0121-FTX	SMD. RES 120 OHM 1/10W +/-1% 0603	R308
T8-32LA7A-MA1	19-BC0000-JTX	SMD. RES 0 OHM 1/8W +/-5%	L302
T8-32LA7A-MA1	19-BC0000-JTX	SMD. RES 0 OHM 1/8W +/-5%	L309
T8-32LA7A-MA1	19-BC0000-JTX	SMD. RES 0 OHM 1/8W +/-5%	L303
T8-32LA7A-MA1	19-BC0000-JTX	SMD. RES 0 OHM 1/8W +/-5%	L307
T8-32LA7A-MA1	19-BC0000-JTX	SMD. RES 0 OHM 1/8W +/-5%	L312
T8-32LA7A-MA1	19-BC0000-JTX	SMD. RES 0 OHM 1/8W +/-5%	L320
T8-32LA7A-MA1	19-BC0000-JTX	SMD. RES 0 OHM 1/8W +/-5%	L304
T8-32LA7A-MA1	19-BC0000-JTX	SMD. RES 0 OHM 1/8W +/-5%	L310
T8-32LA7A-MA1	19-BC0100-JTX	SMD. RES 10 OHM 1/8W +/-5%	R626
T8-32LA7A-MA1	19-BC0331-JTX	SMD. RES 330 OHM 1/8W +/-5%	R667
T8-32LA7A-MA1	19-BC0331-JTX	SMD. RES 330 OHM 1/8W +/-5%	R668
T8-32LA7A-MA1	19-BC0750-JTX	SMD. RES 75 OHM 1/8W +/-5%	R640
T8-32LA7A-MA1	19-GA0000-JTX	SMD. RES 0 OHM 1/16W +/-5%	R953
T8-32LA7A-MA1	19-GA0000-JTX	SMD. RES 0 OHM 1/16W +/-5%	R111
T8-32LA7A-MA1	19-GA0000-JTX	SMD. RES 0 OHM 1/16W +/-5%	R110
T8-32LA7A-MA1	19-GA0000-JTX	SMD. RES 0 OHM 1/16W +/-5%	R306
T8-32LA7A-MA1	19-GA0000-JTX	SMD. RES 0 OHM 1/16W +/-5%	R241
T8-32LA7A-MA1	19-GA0000-JTX	SMD. RES 0 OHM 1/16W +/-5%	R922
T8-32LA7A-MA1	19-GA0000-JTX	SMD. RES 0 OHM 1/16W +/-5%	R931
T8-32LA7A-MA1	19-GA0000-JTX	SMD. RES 0 OHM 1/16W +/-5%	R326
T8-32LA7A-MA1	19-GA0000-JTX	SMD. RES 0 OHM 1/16W +/-5%	R967
T8-32LA7A-MA1	19-GA0000-JTX	SMD. RES 0 OHM 1/16W +/-5%	R960
T8-32LA7A-MA1	19-GA0000-JTX	SMD. RES 0 OHM 1/16W +/-5%	R951
T8-32LA7A-MA1	19-GA0000-JTX	SMD. RES 0 OHM 1/16W +/-5%	R932
T8-32LA7A-MA1	19-GA0100-JTX	SMD. RES 10 OHM 1/16W +/-5%	R204
T8-32LA7A-MA1	19-GA0100-JTX	SMD. RES 10 OHM 1/16W +/-5%	R205
T8-32LA7A-MA1	19-GA0101-JTX	SMD. RES 100 OHM 1/16W +/-5%	R237
T8-32LA7A-MA1	19-GA0101-JTX	SMD. RES 100 OHM 1/16W +/-5%	R924
T8-32LA7A-MA1	19-GA0101-JTX	SMD. RES 100 OHM 1/16W +/-5%	R946
T8-32LA7A-MA1	19-GA0101-JTX	SMD. RES 100 OHM 1/16W +/-5%	R939
T8-32LA7A-MA1	19-GA0101-JTX	SMD. RES 100 OHM 1/16W +/-5%	R937
T8-32LA7A-MA1	19-GA0101-JTX	SMD. RES 100 OHM 1/16W +/-5%	R256
T8-32LA7A-MA1	19-GA0101-JTX	SMD. RES 100 OHM 1/16W +/-5%	R901
T8-32LA7A-MA1	19-GA0101-JTX	SMD. RES 100 OHM 1/16W +/-5%	R907
T8-32LA7A-MA1	19-GA0101-JTX	SMD. RES 100 OHM 1/16W +/-5%	R908
T8-32LA7A-MA1	19-GA0101-JTX	SMD. RES 100 OHM 1/16W +/-5%	R284
T8-32LA7A-MA1	19-GA0101-JTX	SMD. RES 100 OHM 1/16W +/-5%	R925
T8-32LA7A-MA1	19-GA0101-JTX	SMD. RES 100 OHM 1/16W +/-5%	R965
T8-32LA7A-MA1	19-GA0101-JTX	SMD. RES 100 OHM 1/16W +/-5%	R285
T8-32LA7A-MA1	19-GA0101-JTX	SMD. RES 100 OHM 1/16W +/-5%	R108
T8-32LA7A-MA1	19-GA0101-JTX	SMD. RES 100 OHM 1/16W +/-5%	R921
T8-32LA7A-MA1	19-GA0101-JTX	SMD. RES 100 OHM 1/16W +/-5%	R283
T8-32LA7A-MA1	19-GA0101-JTX	SMD. RES 100 OHM 1/16W +/-5%	R954
T8-32LA7A-MA1	19-GA0101-JTX	SMD. RES 100 OHM 1/16W +/-5%	R224
T8-32LA7A-MA1	19-GA0101-JTX	SMD. RES 100 OHM 1/16W +/-5%	R944
T8-32LA7A-MA1	19-GA0101-JTX	SMD. RES 100 OHM 1/16W +/-5%	R948
T8-32LA7A-MA1	19-GA0101-JTX	SMD. RES 100 OHM 1/16W +/-5%	R286

[illegible]

T8-32LA7A-MA1	19-GA0180-JTX	R-SMD 180HM +/-5% 1/16W REEL TAPED	R947
T8-32LA7A-MA1	19-GA0180-JTX	R-SMD 180HM +/-5% 1/16W REEL TAPED	R943
T8-32LA7A-MA1	19-GA0180-JTX	R-SMD 180HM +/-5% 1/16W REEL TAPED	R945
T8-32LA7A-MA1	19-GA0182-JTX	SMD. RES 1800 OHM 1/16W +/-5%	R974
T8-32LA7A-MA1	19-GA0221-JTX	SMD. RES 220 OHM 1/16W +/-5%	R206
T8-32LA7A-MA1	19-GA0222-JTX	SMD. RES 2.2K OHM 1/16W +/-5%	R115
T8-32LA7A-MA1	19-GA0222-JTX	SMD. RES 2.2K OHM 1/16W +/-5%	R976
T8-32LA7A-MA1	19-GA0222-JTX	SMD. RES 2.2K OHM 1/16W +/-5%	R324
T8-32LA7A-MA1	19-GA0222-JTX	SMD. RES 2.2K OHM 1/16W +/-5%	R328
T8-32LA7A-MA1	19-GA0222-JTX	SMD. RES 2.2K OHM 1/16W +/-5%	R304
T8-32LA7A-MA1	19-GA0222-JTX	SMD. RES 2.2K OHM 1/16W +/-5%	R307
T8-32LA7A-MA1	19-GA0223-JTX	SMD. RES 22K OHM 1/16W +/-5%	R323
T8-32LA7A-MA1	19-GA0223-JTX	SMD. RES 22K OHM 1/16W +/-5%	R645
T8-32LA7A-MA1	19-GA0223-JTX	SMD. RES 22K OHM 1/16W +/-5%	R649
T8-32LA7A-MA1	19-GA0223-JTX	SMD. RES 22K OHM 1/16W +/-5%	R644
T8-32LA7A-MA1	19-GA0223-JTX	SMD. RES 22K OHM 1/16W +/-5%	R327
T8-32LA7A-MA1	19-GA0223-JTX	SMD. RES 22K OHM 1/16W +/-5%	R648
T8-32LA7A-MA1	19-GA0223-JTX	SMD. RES 22K OHM 1/16W +/-5%	R647
T8-32LA7A-MA1	19-GA0223-JTX	SMD. RES 22K OHM 1/16W +/-5%	R646
T8-32LA7A-MA1	19-GA0224-JTX	R-SMD 220K00HM 5% 1/16W 0402 -	R606
T8-32LA7A-MA1	19-GA0224-JTX	R-SMD 220K00HM 5% 1/16W 0402 -	R616
T8-32LA7A-MA1	19-GA0272-JTX	R-SMD 2K70HM 5% 1/16W 0402 -	R261
T8-32LA7A-MA1	19-GA0273-JTX	R-SMD 27K00HM 5% 1/16W 0402 -	R902
T8-32LA7A-MA1	19-GA0330-JTX	SMD. RES 33 OHM 1/16W +/-5%	R1
T8-32LA7A-MA1	19-GA0330-JTX	SMD. RES 33 OHM 1/16W +/-5%	R16
T8-32LA7A-MA1	19-GA0330-JTX	SMD. RES 33 OHM 1/16W +/-5%	R15
T8-32LA7A-MA1	19-GA0330-JTX	SMD. RES 33 OHM 1/16W +/-5%	R2
T8-32LA7A-MA1	19-GA0333-JTX	SMD. RES 33K OHM 1/16W +/-5%	R692
T8-32LA7A-MA1	19-GA0334-JTX	R-SMD 330K00HM 5% 1/16W 0402 -	R614
T8-32LA7A-MA1	19-GA0334-JTX	R-SMD 330K00HM 5% 1/16W 0402 -	R604
T8-32LA7A-MA1	19-GA0392-JTX	SMD. RES 3.9K OHM 1/16W +/-5%	R622
T8-32LA7A-MA1	19-GA0392-JTX	SMD. RES 3.9K OHM 1/16W +/-5%	R632
T8-32LA7A-MA1	19-GA0471-JTX	SMD. RES 470 OHM 1/16W +/-5%	R975
T8-32LA7A-MA1	19-GA0471-JTX	SMD. RES 470 OHM 1/16W +/-5%	R969
T8-32LA7A-MA1	19-GA0471-JTX	SMD. RES 470 OHM 1/16W +/-5%	R608
T8-32LA7A-MA1	19-GA0471-JTX	SMD. RES 470 OHM 1/16W +/-5%	R618
T8-32LA7A-MA1	19-GA0471-JTX	SMD. RES 470 OHM 1/16W +/-5%	R968
T8-32LA7A-MA1	19-GA0472-JTX	SMD. RES 4.7K OHM 1/16W +/-5%	R278
T8-32LA7A-MA1	19-GA0472-JTX	SMD. RES 4.7K OHM 1/16W +/-5%	R281
T8-32LA7A-MA1	19-GA0472-JTX	SMD. RES 4.7K OHM 1/16W +/-5%	R246
T8-32LA7A-MA1	19-GA0472-JTX	SMD. RES 4.7K OHM 1/16W +/-5%	R653
T8-32LA7A-MA1	19-GA0472-JTX	SMD. RES 4.7K OHM 1/16W +/-5%	R203
T8-32LA7A-MA1	19-GA0472-JTX	SMD. RES 4.7K OHM 1/16W +/-5%	R244
T8-32LA7A-MA1	19-GA0472-JTX	SMD. RES 4.7K OHM 1/16W +/-5%	R230
T8-32LA7A-MA1	19-GA0472-JTX	SMD. RES 4.7K OHM 1/16W +/-5%	R220
T8-32LA7A-MA1	19-GA0472-JTX	SMD. RES 4.7K OHM 1/16W +/-5%	R232
T8-32LA7A-MA1	19-GA0472-JTX	SMD. RES 4.7K OHM 1/16W +/-5%	R282
T8-32LA7A-MA1	19-GA0472-JTX	SMD. RES 4.7K OHM 1/16W +/-5%	R103
T8-32LA7A-MA1	19-GA0472-JTX	SMD. RES 4.7K OHM 1/16W +/-5%	R221
T8-32LA7A-MA1	19-GA0472-JTX	SMD. RES 4.7K OHM 1/16W +/-5%	R226
T8-32LA7A-MA1	19-GA0472-JTX	SMD. RES 4.7K OHM 1/16W +/-5%	R229
T8-32LA7A-MA1	19-GA0472-JTX	SMD. RES 4.7K OHM 1/16W +/-5%	R222
T8-32LA7A-MA1	19-GA0472-JTX	SMD. RES 4.7K OHM 1/16W +/-5%	R225
T8-32LA7A-MA1	19-GA0472-JTX	SMD. RES 4.7K OHM 1/16W +/-5%	R909
T8-32LA7A-MA1	19-GA0472-JTX	SMD. RES 4.7K OHM 1/16W +/-5%	R102
T8-32LA7A-MA1	19-GA0472-JTX	SMD. RES 4.7K OHM 1/16W +/-5%	R652
T8-32LA7A-MA1	19-GA0472-JTX	SMD. RES 4.7K OHM 1/16W +/-5%	R636

T8-32LA7A-MA1	19-GA0472-JTX	SMD. RES 4.7K OHM 1/16W +/-5%	R259
T8-32LA7A-MA1	19-GA0472-JTX	SMD. RES 4.7K OHM 1/16W +/-5%	R202
T8-32LA7A-MA1	19-GA0473-JTX	SMD. RES 47K OHM 1/16W +/-5%	R609
T8-32LA7A-MA1	19-GA0473-JTX	SMD. RES 47K OHM 1/16W +/-5%	R628
T8-32LA7A-MA1	19-GA0473-JTX	SMD. RES 47K OHM 1/16W +/-5%	R619
T8-32LA7A-MA1	19-GA0473-JTX	SMD. RES 47K OHM 1/16W +/-5%	R275
T8-32LA7A-MA1	19-GA0473-JTX	SMD. RES 47K OHM 1/16W +/-5%	R296
T8-32LA7A-MA1	19-GA0473-JTX	SMD. RES 47K OHM 1/16W +/-5%	R904
T8-32LA7A-MA1	19-GA0473-JTX	SMD. RES 47K OHM 1/16W +/-5%	R627
T8-32LA7A-MA1	19-GA0473-JTX	SMD. RES 47K OHM 1/16W +/-5%	R691
T8-32LA7A-MA1	19-GA0473-JTX	SMD. RES 47K OHM 1/16W +/-5%	R903
T8-32LA7A-MA1	19-GA0474-JTX	R-SMD 470K00HM 5% 1/16W 0402 -	R280
T8-32LA7A-MA1	19-GA0510-JTX	R-SMD 51R00HM 5% 1/16W 0402 -	R19
T8-32LA7A-MA1	19-GA0510-JTX	R-SMD 51R00HM 5% 1/16W 0402 -	R17
T8-32LA7A-MA1	19-GA0512-FTX	R-CHIP 5.1KOHM +/-1% 1/16W R=Y	R201
T8-32LA7A-MA1	19-GA0512-JTX	R-SMD 5K10HM 5% 1/16W 0402 -	R958
T8-32LA7A-MA1	19-GA0512-JTX	R-SMD 5K10HM 5% 1/16W 0402 -	R956
T8-32LA7A-MA1	19-GA0512-JTX	R-SMD 5K10HM 5% 1/16W 0402 -	R935
T8-32LA7A-MA1	19-GA0512-JTX	R-SMD 5K10HM 5% 1/16W 0402 -	R936
T8-32LA7A-MA1	19-GA0512-JTX	R-SMD 5K10HM 5% 1/16W 0402 -	R964
T8-32LA7A-MA1	19-GA0512-JTX	R-SMD 5K10HM 5% 1/16W 0402 -	R962
T8-32LA7A-MA1	19-GA0560-JTX	R-SMD 560HM +/-5% 1/16W 0402 0402	R972
T8-32LA7A-MA1	19-GA0560-JTX	R-SMD 560HM +/-5% 1/16W 0402 0402	R949
T8-32LA7A-MA1	19-GA0560-JTX	R-SMD 560HM +/-5% 1/16W 0402 0402	R950
T8-32LA7A-MA1	19-GA0561-JTX	SMD. RES 560 OHM 1/16W +/-5%	R216
T8-32LA7A-MA1	19-GA0680-JTX	SMD. RES 68 OHM 1/16W +/-5%	R3
T8-32LA7A-MA1	19-GA0682-JTX	SMD. RES 6800 OHM 1/16W +/-5%	R605
T8-32LA7A-MA1	19-GA0682-JTX	SMD. RES 6800 OHM 1/16W +/-5%	R615
T8-32LA7A-MA1	19-GA0683-JTX	SMD. RES 68K OHM 1/16W +/-5%	R657
T8-32LA7A-MA1	19-GA0683-JTX	SMD. RES 68K OHM 1/16W +/-5%	R656
T8-32LA7A-MA1	19-GA0750-JTX	SMD. RES 75 OHM 1/16W +/-5%	R926
T8-32LA7A-MA1	19-GA0750-JTX	SMD. RES 75 OHM 1/16W +/-5%	R920
T8-32LA7A-MA1	19-GA0750-JTX	SMD. RES 75 OHM 1/16W +/-5%	R970
T8-32LA7A-MA1	19-GA0750-JTX	SMD. RES 75 OHM 1/16W +/-5%	R966
T8-32LA7A-MA1	19-GA0750-JTX	SMD. RES 75 OHM 1/16W +/-5%	R959
T8-32LA7A-MA1	19-GA0750-JTX	SMD. RES 75 OHM 1/16W +/-5%	R923
T8-32LA7A-MA1	19-GA0750-JTX	SMD. RES 75 OHM 1/16W +/-5%	R940
T8-32LA7A-MA1	19-GA0750-JTX	SMD. RES 75 OHM 1/16W +/-5%	R938
T8-32LA7A-MA1	19-GA0822-JTX	R-SMD 8K20HM 5% 1/16W 0402 -	R612
T8-32LA7A-MA1	19-GA0822-JTX	R-SMD 8K20HM 5% 1/16W 0402 -	R611
T8-32LA7A-MA1	19-GA0822-JTX	R-SMD 8K20HM 5% 1/16W 0402 -	R602
T8-32LA7A-MA1	19-GA0822-JTX	R-SMD 8K20HM 5% 1/16W 0402 -	R601
T8-32LA7A-MA1	19-GA0823-JTX	R-SMD 82K00HM 5% 1/16W 0402 -	R654
T8-32LA7A-MA1	23-D04330-JBX	NETWORK RES. 33R	L212
T8-32LA7A-MA1	23-D04330-JBX	NETWORK RES. 33R	L211
T8-32LA7A-MA1	23-D04330-JBX	NETWORK RES. 33R	L210
T8-32LA7A-MA1	23-D04330-JBX	NETWORK RES. 33R	L209
T8-32LA7A-MA1	23-D04330-JBX	NETWORK RES. 33R	L208
T8-32LA7A-MA1	23-D04330-JBX	NETWORK RES. 33R	L207
T8-32LA7A-MA1	23-D04330-JBX	NETWORK RES. 33R	L206
T8-32LA7A-MA1	23-D04330-JBX	NETWORK RES. 33R	L203
T8-32LA7A-MA1	23-D04330-JBX	NETWORK RES. 33R	L204
T8-32LA7A-MA1	23-D04330-JBX	NETWORK RES. 33R	L205
T8-32LA7A-MA1	23-D08220-JBX	NETWORK RES. 22 OHM 1/16W +/-5%	RM202
T8-32LA7A-MA1	25-BBB471-M1X	CAP. ELE 5MM 470UF 10V 8X11.5 85 /	C312
T8-32LA7A-MA1	25-BCB471-M1X	CAP. ELEC 470 UF 16V +/-20%	C618
T8-32LA7A-MA1	25-BDB471-M1X	CAP. ELEC 470 UF 25V +/-20%	C641

T8-32LA7A-MA1	25-HCB100-M1X	CAP. ELEC 10 UF 16V +/-20%	C626
T8-32LA7A-MA1	25-HCB100-M1X	CAP. ELEC 10 UF 16V +/-20%	C628
T8-32LA7A-MA1	25-HCB100-M1X	CAP. ELEC 10 UF 16V +/-20%	C616
T8-32LA7A-MA1	25-HCB100-M1X	CAP. ELEC 10 UF 16V +/-20%	C619
T8-32LA7A-MA1	25-HCB100-M1X	CAP. ELEC 10 UF 16V +/-20%	C621
T8-32LA7A-MA1	25-HCB100-M1X	CAP. ELEC 10 UF 16V +/-20%	C631
T8-32LA7A-MA1	25-HCB100-M1X	CAP. ELEC 10 UF 16V +/-20%	C606
T8-32LA7A-MA1	25-HCB101-M1X	CAP.ELE 5MM 100UF 16.0V 6.3*7 85 \	C365
T8-32LA7A-MA1	25-HCB101-M1X	CAP.ELE 5MM 100UF 16.0V 6.3*7 85 \	C376
T8-32LA7A-MA1	25-HCB101-M1X	CAP.ELE 5MM 100UF 16.0V 6.3*7 85 \	C377
T8-32LA7A-MA1	25-HCB101-M1X	CAP.ELE 5MM 100UF 16.0V 6.3*7 85 \	C917
T8-32LA7A-MA1	25-HCB101-M1X	CAP.ELE 5MM 100UF 16.0V 6.3*7 85 \	C117
T8-32LA7A-MA1	25-HCB101-M1X	CAP.ELE 5MM 100UF 16.0V 6.3*7 85 \	C625
T8-32LA7A-MA1	25-HCB101-M1X	CAP.ELE 5MM 100UF 16.0V 6.3*7 85 \	C344
T8-32LA7A-MA1	25-HCB101-M1X	CAP.ELE 5MM 100UF 16.0V 6.3*7 85 \	C380
T8-32LA7A-MA1	25-HCB101-M1X	CAP.ELE 5MM 100UF 16.0V 6.3*7 85 \	C341
T8-32LA7A-MA1	25-HCB101-M1X	CAP.ELE 5MM 100UF 16.0V 6.3*7 85 \	C345
T8-32LA7A-MA1	25-HCB101-M1X	CAP.ELE 5MM 100UF 16.0V 6.3*7 85 \	C349
T8-32LA7A-MA1	25-HCB221-M1X	CAP. ELE 5MM 220UF 16V +/-20%(8*7)	C629
T8-32LA7A-MA1	25-HCB221-M1X	CAP. ELE 5MM 220UF 16V +/-20%(8*7)	C644
T8-32LA7A-MA1	25-HCB221-M1X	CAP. ELE 5MM 220UF 16V +/-20%(8*7)	C204
T8-32LA7A-MA1	25-HFB220-M1X	CAP. ELE 5MM 22UF 50VV 6.3 *7 85 \	C114
T8-32LA7A-MA1	28-AB0102-KBX	CAP. CER, SMD 1NF 50.0V 0603 - +/-10%	C222
T8-32LA7A-MA1	28-AB0104-KBX	CAP. CER, SMD 100NF 50.0V 0603 - +/-	C642
T8-32LA7A-MA1	28-AB0104-ZFX	CAP. CER, SMD 100NOF 50V DCV 0603 -	C130
T8-32LA7A-MA1	28-AB0104-ZFX	CAP. CER, SMD 100NOF 50V DCV 0603 -	C614
T8-32LA7A-MA1	28-AB0104-ZFX	CAP. CER, SMD 100NOF 50V DCV 0603 -	C604
T8-32LA7A-MA1	28-AB0150-JCX	CAP. SMD 15P 50V +/-5% 0603	C925
T8-32LA7A-MA1	28-AB0150-JCX	CAP. SMD 15P 50V +/-5% 0603	C926
T8-32LA7A-MA1	28-AB0150-JCX	CAP. SMD 15P 50V +/-5% 0603	C924
T8-32LA7A-MA1	28-AB0224-ZFX	CAP. CER, SMD 220NOF 50V DCV 0603 -	C653
T8-32LA7A-MA1	28-AB0224-ZFX	CAP. CER, SMD 220NOF 50V DCV 0603 -	C652
T8-32LA7A-MA1	28-AB0681-JCX	CAP. CER, SMD 680POF 50.0V 0603 -	C612
T8-32LA7A-MA1	28-AB0681-JCX	CAP. CER, SMD 680POF 50.0V 0603 -	C602
T8-32LA7A-MA1	28-AC0104-KBX	CAP. M. PE 100NF 16V +/-10% 20947390	C219
T8-32LA7A-MA1	28-AC0105-ZFX	SMD. CAP 1 UF 16VDC +80%/-20%	C933
T8-32LA7A-MA1	28-AC0105-ZFX	SMD. CAP 1 UF 16VDC +80%/-20%	C111
T8-32LA7A-MA1	28-AC0105-ZFX	SMD. CAP 1 UF 16VDC +80%/-20%	C388
T8-32LA7A-MA1	28-AC0105-ZFX	SMD. CAP 1 UF 16VDC +80%/-20%	C214
T8-32LA7A-MA1	28-AC0105-ZFX	SMD. CAP 1 UF 16VDC +80%/-20%	C620
T8-32LA7A-MA1	28-AC0105-ZFX	SMD. CAP 1 UF 16VDC +80%/-20%	C605
T8-32LA7A-MA1	28-AC0105-ZFX	SMD. CAP 1 UF 16VDC +80%/-20%	C615
T8-32LA7A-MA1	28-BA0105-KBX	SMD. CAP 1UF 10V +/-10%	C601
T8-32LA7A-MA1	28-BA0105-KBX	SMD. CAP 1UF 10V +/-10%	C611
T8-32LA7A-MA1	28-BA0106-ZFX	CAP. CER, SMD 10UOF 10V DCV 0805 -	C333
T8-32LA7A-MA1	28-BA0225-ZFX	SMD. CAP 10V 2.2UF +80% -20%	C934
T8-32LA7A-MA1	28-BA0225-ZFX	SMD. CAP 10V 2.2UF +80% -20%	C935
T8-32LA7A-MA1	28-BA0225-ZFX	SMD. CAP 10V 2.2UF +80% -20%	C930
T8-32LA7A-MA1	28-BA0225-ZFX	SMD. CAP 10V 2.2UF +80% -20%	C910
T8-32LA7A-MA1	28-BA0225-ZFX	SMD. CAP 10V 2.2UF +80% -20%	C911
T8-32LA7A-MA1	28-BA0225-ZFX	SMD. CAP 10V 2.2UF +80% -20%	C931
T8-32LA7A-MA1	28-BA0475-ZFX	CAP. CER, SMD 4U7F 10V DCV 0805 -	C384
T8-32LA7A-MA1	28-BA0475-ZFX	CAP. CER, SMD 4U7F 10V DCV 0805 -	C385
T8-32LA7A-MA1	28-BA0475-ZFX	CAP. CER, SMD 4U7F 10V DCV 0805 -	C104
T8-32LA7A-MA1	28-BA0475-ZFX	CAP. CER, SMD 4U7F 10V DCV 0805 -	C205
T8-32LA7A-MA1	28-BA0475-ZFX	CAP. CER, SMD 4U7F 10V DCV 0805 -	C119
T8-32LA7A-MA1	28-BC0106-KBX	CAP. CER, SMD 10UF 16V 0805	C649

T8-32LA7A-MA1	28-BC0106-KBX	CAP. CER, SMD 10UF 16V 0805	C648
T8-32LA7A-MA1	28-BC0225-ZFX	CAP. CER, SMD 2U2F 16.0V 0805 -	C116
T8-32LA7A-MA1	28-HB0100-JCX	CAP. CER, SMD 10PF 50V 0402 - +/-5%	C224
T8-32LA7A-MA1	28-HB0100-JCX	CAP. CER, SMD 10PF 50V 0402 - +/-5%	C242
T8-32LA7A-MA1	28-HB0100-JCX	CAP. CER, SMD 10PF 50V 0402 - +/-5%	C223
T8-32LA7A-MA1	28-HB0100-JCX	CAP. CER, SMD 10PF 50V 0402 - +/-5%	C233
T8-32LA7A-MA1	28-HB0100-JCX	CAP. CER, SMD 10PF 50V 0402 - +/-5%	C238
T8-32LA7A-MA1	28-HB0100-JCX	CAP. CER, SMD 10PF 50V 0402 - +/-5%	C226
T8-32LA7A-MA1	28-HB0100-JCX	CAP. CER, SMD 10PF 50V 0402 - +/-5%	C232
T8-32LA7A-MA1	28-HB0100-JCX	CAP. CER, SMD 10PF 50V 0402 - +/-5%	C231
T8-32LA7A-MA1	28-HB0100-JCX	CAP. CER, SMD 10PF 50V 0402 - +/-5%	C236
T8-32LA7A-MA1	28-HB0100-JCX	CAP. CER, SMD 10PF 50V 0402 - +/-5%	C237
T8-32LA7A-MA1	28-HB0100-JCX	CAP. CER, SMD 10PF 50V 0402 - +/-5%	C225
T8-32LA7A-MA1	28-HB0100-JCX	CAP. CER, SMD 10PF 50V 0402 - +/-5%	C228
T8-32LA7A-MA1	28-HB0100-JCX	CAP. CER, SMD 10PF 50V 0402 - +/-5%	C241
T8-32LA7A-MA1	28-HB0100-JCX	CAP. CER, SMD 10PF 50V 0402 - +/-5%	C230
T8-32LA7A-MA1	28-HB0100-JCX	CAP. CER, SMD 10PF 50V 0402 - +/-5%	C229
T8-32LA7A-MA1	28-HB0100-JCX	CAP. CER, SMD 10PF 50V 0402 - +/-5%	C234
T8-32LA7A-MA1	28-HB0100-JCX	CAP. CER, SMD 10PF 50V 0402 - +/-5%	C235
T8-32LA7A-MA1	28-HB0100-JCX	CAP. CER, SMD 10PF 50V 0402 - +/-5%	C227
T8-32LA7A-MA1	28-HB0100-JCX	CAP. CER, SMD 10PF 50V 0402 - +/-5%	C239
T8-32LA7A-MA1	28-HB0100-JCX	CAP. CER, SMD 10PF 50V 0402 - +/-5%	C240
T8-32LA7A-MA1	28-HB0101-JCX	CAP. CER, SMD 100P0F 50V DCV 0402 -	C623
T8-32LA7A-MA1	28-HB0101-JCX	CAP. CER, SMD 100P0F 50V DCV 0402 -	C633
T8-32LA7A-MA1	28-HB0101-JCX	CAP. CER, SMD 100P0F 50V DCV 0402 -	C610
T8-32LA7A-MA1	28-HB0101-JCX	CAP. CER, SMD 100P0F 50V DCV 0402 -	C609
T8-32LA7A-MA1	28-HB0101-JCX	CAP. CER, SMD 100P0F 50V DCV 0402 -	C243
T8-32LA7A-MA1	28-HB0102-KBX	CAP. CER, SMD 1N0F 50V DCV 0402 -	C221
T8-32LA7A-MA1	28-HB0102-KBX	CAP. CER, SMD 1N0F 50V DCV 0402 -	C622
T8-32LA7A-MA1	28-HB0102-KBX	CAP. CER, SMD 1N0F 50V DCV 0402 -	C632
T8-32LA7A-MA1	28-HB0103-KBX	CAP. CER, SMD 10N0F 50V DCV 0402 -	C927
T8-32LA7A-MA1	28-HB0103-KBX	CAP. CER, SMD 10N0F 50V DCV 0402 -	C906
T8-32LA7A-MA1	28-HB0103-KBX	CAP. CER, SMD 10N0F 50V DCV 0402 -	C908
T8-32LA7A-MA1	28-HB0103-KBX	CAP. CER, SMD 10N0F 50V DCV 0402 -	C350
T8-32LA7A-MA1	28-HB0103-KBX	CAP. CER, SMD 10N0F 50V DCV 0402 -	C347
T8-32LA7A-MA1	28-HB0103-KBX	CAP. CER, SMD 10N0F 50V DCV 0402 -	C942
T8-32LA7A-MA1	28-HB0103-KBX	CAP. CER, SMD 10N0F 50V DCV 0402 -	C607
T8-32LA7A-MA1	28-HB0103-KBX	CAP. CER, SMD 10N0F 50V DCV 0402 -	C617
T8-32LA7A-MA1	28-HB0103-KBX	CAP. CER, SMD 10N0F 50V DCV 0402 -	C941
T8-32LA7A-MA1	28-HB0103-KBX	CAP. CER, SMD 10N0F 50V DCV 0402 -	C923
T8-32LA7A-MA1	28-HB0103-KBX	CAP. CER, SMD 10N0F 50V DCV 0402 -	C904
T8-32LA7A-MA1	28-HB0103-KBX	CAP. CER, SMD 10N0F 50V DCV 0402 -	C944
T8-32LA7A-MA1	28-HB0103-KBX	CAP. CER, SMD 10N0F 50V DCV 0402 -	C922
T8-32LA7A-MA1	28-HB0103-KBX	CAP. CER, SMD 10N0F 50V DCV 0402 -	C921
T8-32LA7A-MA1	28-HB0103-KBX	CAP. CER, SMD 10N0F 50V DCV 0402 -	C22
T8-32LA7A-MA1	28-HB0103-KBX	CAP. CER, SMD 10N0F 50V DCV 0402 -	C21
T8-32LA7A-MA1	28-HB0152-KBX	0402 CHIP CAPACITORS 50VDC 1500PF	C928
T8-32LA7A-MA1	28-HB0152-KBX	0402 CHIP CAPACITORS 50VDC 1500PF	C905
T8-32LA7A-MA1	28-HB0221-JCX	CAP. CER, SMD 220P0F 50V DCV 0402 -	C12
T8-32LA7A-MA1	28-HB0221-KBX	SMD. CAP 220PF 50V +/-10%	C613
T8-32LA7A-MA1	28-HB0221-KBX	SMD. CAP 220PF 50V +/-10%	C603
T8-32LA7A-MA1	28-HB0270-JCX	SMD. CAP 27 PF 50V +/-5% 0402	C207
T8-32LA7A-MA1	28-HB0270-JCX	SMD. CAP 27 PF 50V +/-5% 0402	C105
T8-32LA7A-MA1	28-HB0270-JCX	SMD. CAP 27 PF 50V +/-5% 0402	C206
T8-32LA7A-MA1	28-HB0270-JCX	SMD. CAP 27 PF 50V +/-5% 0402	C106
T8-32LA7A-MA1	28-HB0331-JCX	CAP. CER, SMD 330PF 50V 0402 -	C112
T8-32LA7A-MA1	28-HB0470-JCX	CAP. CER, SMD 47PF 50V 0402 -	C932

[illegible]

T8-32LA7A-MA1	28-HC0104-KBX	CAP. CER, SMD 100NF 16V 0402 -	C387
T8-32LA7A-MA1	28-HC0104-KBX	CAP. CER, SMD 100NF 16V 0402 -	C357
T8-32LA7A-MA1	28-HC0104-KBX	CAP. CER, SMD 100NF 16V 0402 -	C337
T8-32LA7A-MA1	28-HC0104-KBX	CAP. CER, SMD 100NF 16V 0402 -	C322
T8-32LA7A-MA1	28-HC0104-KBX	CAP. CER, SMD 100NF 16V 0402 -	C367
T8-32LA7A-MA1	28-HC0473-KBX	CAP. CER, SMD 47NF 16V 0402 -	C209
T8-32LA7A-MA1	28-HC0473-KBX	CAP. CER, SMD 47NF 16V 0402 -	C929
T8-32LA7A-MA1	28-HC0473-KBX	CAP. CER, SMD 47NF 16V 0402 -	C101
T8-32LA7A-MA1	28-HC0473-KBX	CAP. CER, SMD 47NF 16V 0402 -	C936
T8-32LA7A-MA1	28-HC0473-KBX	CAP. CER, SMD 47NF 16V 0402 -	C912
T8-32LA7A-MA1	28-HC0473-KBX	CAP. CER, SMD 47NF 16V 0402 -	C913
T8-32LA7A-MA1	28-HD0822-KBX	SMD. CAP 0402 25V 8200PF +/-10%	C328
T8-32LA7A-MA1	33-ELN221-NTB	FILLCEMI 220.00HM R=Y	L909
T8-32LA7A-MA1	33-ELN221-NTX	CHIP BEAD 220 OHM +/-25%	L315
T8-32LA7A-MA1	33-ELN221-NTX	CHIP BEAD 220 OHM +/-25%	L601
T8-32LA7A-MA1	33-ELN221-NTX	CHIP BEAD 220 OHM +/-25%	L314
T8-32LA7A-MA1	33-ELN221-NTX	CHIP BEAD 220 OHM +/-25%	L103
T8-32LA7A-MA1	33-ELN221-NTX	CHIP BEAD 220 OHM +/-25%	L311
T8-32LA7A-MA1	33-ELN221-NTX	CHIP BEAD 220 OHM +/-25%	L305
T8-32LA7A-MA1	33-ELN221-NTX	CHIP BEAD 220 OHM +/-25%	L313
T8-32LA7A-MA1	33-ELN221-NTX	CHIP BEAD 220 OHM +/-25%	L603
T8-32LA7A-MA1	33-ELN221-NTX	CHIP BEAD 220 OHM +/-25%	L316
T8-32LA7A-MA1	33-ELN221-NTX	CHIP BEAD 220 OHM +/-25%	L319
T8-32LA7A-MA1	33-ELN221-NTX	CHIP BEAD 220 OHM +/-25%	L604
T8-32LA7A-MA1	33-GLN300-NTX	CHIP BEAD 30 OHM +/-25%	R272
T8-32LA7A-MA1	33-GLN300-NTX	CHIP BEAD 30 OHM +/-25%	R273
T8-32LA7A-MA1	33-GLN601-NTX	CHIP BEAD 600 OHM +/-25%	L323
T8-32LA7A-MA1	33-GLN601-NTX	CHIP BEAD 600 OHM +/-25%	L101
T8-32LA7A-MA1	33-KHL108-JTX	IND-SMD 10HM 12 0.2A TAPE	L17
T8-32LA7A-MA1	33-KLL189-KTX	SMD. COIL 1.8 UH +/-10% 0603	L911
T8-32LA7A-MA1	33-KLN121-NTX	CHIP BEAD 120 OHM +/-25%	L905
T8-32LA7A-MA1	33-KLN121-NTX	CHIP BEAD 120 OHM +/-25%	L903
T8-32LA7A-MA1	33-KLN121-NTX	CHIP BEAD 120 OHM +/-25%	L904
T8-32LA7A-MA1	33-MLL150-MTA	IND-SMD 15UH 20% 2.8A	L321
T8-32LA7A-MA1	34-R101J2-OEX	COIL PL - 100 UH +/-5%	L105
T8-32LA7A-MA1	40-MT8223-MAD2XG	TV PCB MA BD R=Y	
T8-32LA7A-MA1	45-OSC27M-0Y6C	SMD CRYSTAL 8D27000223BHAF2025	X1
T8-32LA7A-MA1	46-33079W-04XG	PIN BASE *4 TJC3-4A	P601
T8-32LA7A-MA1	46-35199W-06XG	. PH-6A 6PIN PITCH=2.0MM	P204
T8-32LA7A-MA1	46-35199W-07XG	CONN. PH-7A PITCH=2.0MM 7PIN	P205
T8-32LA7A-MA1	46-40335W-12XG	CONN PHD 12 2.0MM FEMALE ST	P201
T8-32LA7A-MA1	46-40335W-40XG	CONN PHD 40 2.0MM FEMALE ST	P202
T8-32LA7A-MA1	47-EAR014-XX0	EARPHONE SOCKET CK3-3.5-7LK-A	P602
T8-32LA7A-MA1	47-HDI008-XS1	SOCKET HDMI R N E110001-72	P901
T8-32LA7A-MA1	47-MIC012-XX0	MSJ-035-29D PP0(PHT)	P904
T8-32LA7A-MA1	47-RCA217-XX0G	AV SOCKET AV-3.2-3W120	P907A
T8-32LA7A-MA1	47-RCA275-XX0G	SOCKET-RCA 3 RD-WH-YE ST	P909
T8-32LA7A-MA1	47-RCA275-XX0G	SOCKET-RCA 3 RD-WH-YE ST	P908
T8-32LA7A-MA1	47-RCA287-XX0G	SOCKET-RCA N RD-BU-GN 3 R YES AV-	P906
T8-32LA7A-MA1	47-SVI001-XX0	SOCKET S端子 ST N /	P903
T8-32LA7A-MA1	47-USB011-XX0	SOCKET USB R N TCL3149	P905
T8-32LA7A-MA1	47-VGA019-XX0	SOCKET VGA ST Y /	P902
T8-32LA7A-MA1	64-P30080-104G	M/C SCREW P 3 X 8	FOR U602
T8-32LA7A-MA1	67-H46168-0A0	RAW HEATSINK -- F 00 R=Y	Y602
T8-32LA7A-MA1	71-BAR008-0A9	BARCODE LABEL	
T8-32LA7A-MA1	19-BC0101-JTX	SMD. RES100 OHM 1/8W +/-5%	L306

T8-32LA7A-MA1	19-GA0103-JTX	SMD. RES 10K OHM 1/16W +/-5%	R265
T8-32LA7A-MA1	19-GA0472-JTX	SMD. RES 4.7K OHM 1/16W +/-5%	R227
T8-32LA7A-MA1	19-AB0101-JTX	RES SMD 100 OHM 1/10W 0603	L901
T8-32LA7A-MA1	19-AB0101-JTX	RES SMD 100 OHM 1/10W 0603	L902
T8-32LA7A-MA1	19-GA0102-JTX	SMD. RES 1K OHM 1/16W +/-5%	R335
T8-32LA7A-MA1	28-HC0333-KBX	CAP. CER, SMD 33NF 16V 0402 -	C386
T8-32LA7A-MA1	25-HCB221-M1X	CAP. ELE 5MM 220UF 16V +/-20%(8*7)	C351
T8-32LA7A-MA1	28-BA0106-KBX	CAP. CER, SMD 10U0F 10V DCV 0805 -	C353
T8-32LA7A-MA1	19-GA0472-JTX	SMD. RES 4.7K OHM 1/16W +/-5%	R223
T8-32LA7A-MA1	28-BB0101-JCX	SMD CAP. 100 PF 50V C 0805	R696
T8-32LA7A-MA1	28-BB0101-JCX	SMD CAP. 100 PF 50V C 0805	R697
T8-32LA7A-MA1	19-CD0102-JTX	SMD. RES 1000 OHM 1/4W +/-5%	D103
H3-HD10S7A-SV0	T8-32D107A-BS1	ASS'Y - BASEASY	
T8-32D107A-BS1	59-849080-001	TV RAW CUSHION RUBBER 01 00 00 R=N	FOR FIX BASE BOTTOM
T8-32D107A-BS1	63-B4015T-BF5G	SCREW-ST 4MM 15MM ISO 19 R=Y	MOUNT STAND JOINT TO STAND COVER
T8-32D107A-BS1	63-B4015T-BF5G	SCREW-ST 4MM 15MM ISO 19 R=Y	MOUNT STAND BASE TO BACK COVER
T8-32D107A-BS1	T8-32D107A-BS1Z	ASS'Y - BASE(ART)ASY	
T8-32D107A-BS1Z	55-892860-0CQ9B	DEC STAND BASE -- 00 1B 00 R=N	
T8-32D107A-BS1Z	56-892870-0CQ9A	DEC STAND BASE PLATE -- 00 00 00	
T8-32D107A-BS1Z	62-892880-0HN9A	PAI HOLDER SUPPORT -- 00 00 R=N	
T8-32D107A-BS1Z	74-004006-12C	RAW BAG 60X40X0.08MM -- 00 00 00 R=Y	PACK SCREW FOR MOUNTING STAND
T8-32D107A-BS1	89-604792-JZK	SUNDRIES-FILM SELF ADHESIVE FILM	FOR DECORATE RING
T8-32D107A-BS1	89-604791-JZ0	SUNDRIES-FILM SELF ADHESIVE FILM	FOR BASE
H3-HD10S7A-SV0	T8-32D107A-FB1	ASS'Y - F. CTL BDASY	
T8-32D107A-FB1	10-1N4148-ABX	DIODE 1N4148 (SWITCHING)	D001
T8-32D107A-FB1	14-LED03A-XX4	LED 2.1V 0.025 A RD+GNM TRANSPARENT	D002
T8-32D107A-FB1	18-CB0101-JNX	RES. C.F. 100 OHM 1/6W +/-5%	R007
T8-32D107A-FB1	18-CB0102-JNX	RES. C.F. 1K OHM 1/6W +/-5%	R002
T8-32D107A-FB1	18-CB0222-JNX	RES. C.F. 2.2K OHM 1/6W +/-5%	R001
T8-32D107A-FB1	18-CB0271-JNX	RES. C.F. 270 OHM 1/6W +/-5%	R006
T8-32D107A-FB1	18-CB0331-JNX	RES. C.F. 330 OHM 1/6W +/-5%	R005
T8-32D107A-FB1	18-CB0470-JNX	RES. C.F. 47 OHM 1/6W +/-5%	R008
T8-32D107A-FB1	18-CB0471-JNX	RES. C.F. 470 OHM 1/6W +/-5%	R004
T8-32D107A-FB1	18-CB0561-JNX	RES. C.F. 560 OHM 1/6W +/-5%	R003
T8-32D107A-FB1	25-HCB470-M1X	CAP. ELEC 47 UF 16V +/-20%	C001
T8-32D107A-FB1	26-EBP104-ZFS	CAP. CER 0.1UF 50V +80%/-20%	C002
T8-32D107A-FB1	40-L24D10-FBD1XG	TV PCB FB BD R=Y	
T8-32D107A-FB1	46-35199W-06XG	.PH-6A 6PIN PITCH-2.0MM	P001
T8-32D107A-FB1	48-TAC002-XX0	TACT SWITCH	K001
T8-32D107A-FB1	48-TAC002-XX0	TACT SWITCH	K002
T8-32D107A-FB1	48-TAC002-XX0	TACT SWITCH	K003
T8-32D107A-FB1	48-TAC002-XX0	TACT SWITCH	K004
T8-32D107A-FB1	48-TAC002-XX0	TACT SWITCH	K005
T8-32D107A-FB1	48-TAC002-XX0	TACT SWITCH	K006
T8-32D107A-FB1	48-TAC002-XX0	TACT SWITCH	K007
T8-32D107A-FB1	02-IRR002-X12	IR RECEIVER 37900HZ 5V NONE	G001
H3-HD10S7A-SV0	T8-32D107A-FC1	ASS'Y - FRONT CABINETASY	
T8-32D107A-FC1	46-39453H-06XG	HS 6P 20080#28 200MM PH-6Y/PH-6Y	FOR FB. BD P001 TO MA. BD P204
T8-32D107A-FC1	46-AB350B-SS5H1G	WIRE LVDS WIRE FOR 32INCH SAMSUNG HD PAN	FOR MA. BD P202 TO PANEL
T8-32D107A-FC1	46-LL045L-12X01G	WIRE POWER SULLPY WIRE FOR MAIN BOARD 45	FOR PW. BD CON102 TO MA. BD P201

T8-32D107A-FC1	4A-LCD32T-SS6	DISPLAY LCD PANEL 32INCH LTA320AP07	
T8-32D107A-FC1	62-892890-OHN	RAW SUPPORT LCD32D10 -- 00 00 00	
T8-32D107A-FC1	63-B40100-AB4G	SCREW-ST 4MM 10MM 53 R=Y	MTG PANEL&FC
T8-32D107A-FC1	64-B30080-104G	M/C SCREW B 3 X 8	MTG PANEL&CHASSIS
T8-32D107A-FC1	64-B30080-104G	M/C SCREW B 3 X 8	MTG PANEL&SIDE AV HOLDER
T8-32D107A-FC1	64-B30080-104G	M/C SCREW B 3 X 8	MTG POWER BD
T8-32D107A-FC1	64-B30080-104G	M/C SCREW B 3 X 8	MTG PANEL&CHASSIS
T8-32D107A-FC1	64-B40080-104G	M/C SCREW B4X8	MTG LCD SUPPORT & LCD PANEL
T8-32D107A-FC1	67-M89376-0G0	RAW SUPPORT CHASSIS -- 00 00 00	MTG PANEL&CHASSIS
T8-32D107A-FC1	67-M89583-0G0	RAW SUPPORT CHASSIS -- 00 00 00	MTG PANEL&FC
T8-32D107A-FC1	89-604790-JZ4	PROTECTING LABEL	FOR FC BOTTOM
T8-32D107A-FC1	T8-32D107A-FC1Z	ASS'Y - FRONT CABINET ARTASY	
T8-32D107A-FC1Z	55-892840-0CQ9B	DEC FRONTPANEL --- 01 8G 00 R=N	
T8-32D107A-FC1Z	56-891550-OHN6R	PAI SUPPORT -- -- -- -- R=N	
T8-32D107A-FC1Z	56-892900-OHC5Z	PRI LENS NT21M97S TRANSPARENT 5Z	
T8-32D107A-FC1Z	56-892920-OHH9A	PRI DECOR -- -- 00 00 01 R=N	
T8-32D107A-FC1Z	56-893920-OHA6R	PAI KEY PUSH BUTTON R=N	
T8-32D107A-FC1Z	58-895840-OUI9A	DEC OVERLAY -- WHITE 01 00 00 R=Y	
T8-32D107A-FC1	89-604790-JZ3	PROTECTING LABEL	FOR FC TWO SIDES
T8-32D107A-FC1	89-604790-JZ4	PROTECTING LABEL	FOR FC TOP
T8-32D107A-FC1	58-897460-1UH	TV RAW SPACER L32D10 -- 00 00 R=Y	
T8-32D107A-FC1	42-51312F-XX2G	SPEAKER 120HM 8W 180HZ RECTANGLE	FOR MA.BD P601
T8-32D107A-FC1	54-462520-000	SPONGE SQUARE BK R=Y	STICK ON RIGHT&LEFT SIDE
T8-32D107A-FC1	54-462530-000	SPONGE SQUARE BK R=Y	STICK ON TOP&BUTOM SIDE
H3-HD10S7A-SV0	T8-32D107A-PA2	ASS'Y - PACKINGASY	
T8-32D107A-PA2	49-R03P80-BAT	BATTERY 1.5V	
T8-32D107A-PA2	51-BC0160- ODROHG	POWER CORD 1600MM DTI-2P-02/DTIII- 2P-01	
T8-32D107A-PA2	75-893660-EC0	RAW POLYFOAM LCD32D10 -- 01 00 R=Y	
T8-32D107A-PA2	75-893670-EC0	RAW POLYFOAM LCD32D10 -- 01 00 R=Y	
T8-32D107A-PA2	75-893680-EC0	RAW POLYFOAM LCD32D10 -- 01 00 R=Y	
T8-32D107A-PA2	75-893690-EC0	RAW POLYFOAM LCD32D10 -- 01 00 R=Y	
T8-32D107A-PA2	T8-32D107A-PA2Z	ASS'Y - PACKING ARTASY	
T8-32D107A-PA2Z	72-3D10MA-E009A	IB -- -- RUS R=Y	
T8-32D107A-PA2Z	74-022032-6WEEM	PRI BAG -- RED 186C 01 00 00 R=N	
T8-32D107A-PA2Z	74-106072-3WDEM	PRI BAG -- RED 186C 01 00 00 R=N	
T8-32D107A-PA2Z	76-893700-OAT	RAW CARTON-BOX 32D10 KXKXK 00 00	
T8-32D107A-PA2Z	74-015012-50H	RAW BAG PLASTIC 150X120MM -- 00 00	FOR BASE DECORATE RING
T8-32D107A-PA2Z	74-032065-20HEM	DEC BAG 320X650MM R=Y	FOR BASE
H3-HD10S7A-SV0	T8-32D107A-RC1	ASS'Y - REAR CABINETASY	
T8-32D107A-RC1	63-B4015T-BF5G	SCREW-ST 4MM 15MM ISO 19 R=Y	MOUNT POWER SUPPORT&RC
T8-32D107A-RC1	63-B4015T-BF5G	SCREW-ST 4MM 15MM ISO 19 R=Y	MTG FC&RC
T8-32D107A-RC1	63-B4020T-BF5G	SCREW-ST 4MM 20MM ISO R=Y	MTG FC&RC
T8-32D107A-RC1	63-F30100-BT3G	SCREW-ST 3MM 10MM ISO 65 0 0 R=Y	FOR AV JACK
T8-32D107A-RC1	T8-32D107A-RC1Z	ASS'Y - REAR CABINET ARTASY	
T8-32D107A-RC1Z	55-892850-0CL6R	PAI BACKCOVER --- A8252 R=N	
T8-32D107A-RC1Z	56-892940-OHN6R	DEC STAND BASE PLATE -- 00 00 00	
T8-32D107A-RC1Z	58-3D10MP-JKL9A	DEC OVERLAY -- WHITE 01 00 00 R=Y	
T8-32D107A-RC1Z	62-839350-OHG6R	TV PAI HOLDER VESA BOSS -- 00 00 R=N	MTG VESA SCREW POLE ON BACKCOVER
H3-HD10S7A-SV0	V8-OMT2311- LF1V122	SOFTWARE SOFTWARE CODE	FOR U202
H3-HD10S7A-SV0	81-PBL032-PW1L	PSU MT23 SHP3208B-101	