

DSC-S800

SERVICE MANUAL

Ver. 1.1 2007.10

Revision History

**Internal memory
ON BOARD**

Revised-1

Replace the previously issued
SERVICE MANUAL 9-852-208-11
with this Manual.



*US Model
Canadian Model
AEP Model
UK Model
E Model
Australian Model
Chinese Model
Korea Model
Hong Kong Model
Argentine Model*

Link

[SPECIFICATIONS](#)

[DISASSEMBLY](#)

[REPAIR PARTS LIST](#)

[SERVICE NOTE](#)

[BLOCK DIAGRAMS](#)

The components identified by
mark Δ or dotted line with
mark Δ are critical for safety.
Replace only with part num-
ber specified.

Les composants identifiés par une
marque Δ sont critiques pour la
sécurité.
Ne les remplacer que par une pièce
portant le numéro spécifié.

In case of the lens assembly, MAIN BOARD (COMPLETE), DC BOARD
(COMPLETE) or MAIN FRAME ASSY (COMPLETE) failure, contact
your local Sony Service Headquarter for the measures.

DIGITAL STILL CAMERA

SONY®

Cyber-shot



SPECIFICATIONS

[System]

Image device: 9.04 mm (1/1.8 type) color CCD,
Primary color filter
Total pixel number of camera:
Approx. 8 303 000 pixels
Effective pixel number of camera:
Approx. 8 068 000 pixels
Lens: 6× zoom lens $f = 7.8 - 46.8$ mm (37 –
222 mm when converted to a 35 mm still
camera) F2.8 – 4.8
Exposure control: Automatic exposure, Scene
Selection (7 modes)
White balance: Automatic, Daylight, Cloudy,
Fluorescent, Incandescent, Flash
File format (DCF compliant):
Still images: Exif Ver. 2.21 JPEG compliant,
DPOF compatible
Movies: AVI (Motion JPEG)
Recording media: Internal Memory (approx.
54 MB), “Memory Stick Duo”
Flash: Flash range (ISO sensitivity
(Recommended Exposure Index) set to Auto):
approx. 0.5 to 5.0 m (19 3/4 inches to 197 3/8
inches) (W)/approx. 0.7 to 2.9 m (27 5/8
inches to 114 1/2 inches) (T)

[Input and Output connectors]

• (USB) · A/V OUT terminal:
Video, Audio (Monaural),
USB communication
USB communication:
Full-Speed USB (USB 2.0 compliant)

[LCD screen]

LCD panel: 6.2 cm (2.5 type) TFT drive
Total number of dots: 230 400 (960×240) dots

[Power, general]

Power: HR15/51: HR6 (size AA) Nickel-Metal
Hydride batteries (2), 2.4 V
AC-LS5K AC Adaptor (not supplied), 4.2 V
Power consumption (during shooting): 1.4 W
Operating temperature: 0 to 40°C (32 to 104°F)
Storage temperature: –20 to +60°C (–4 to +140°F)
Dimensions: 92.7×62.7×39.3 mm (3 3/4×
2 1/2×1 9/16 inches) (W/H/D, excluding
protrusions)
Mass: Approx. 245 g (8.6 oz) (including two
batteries and wrist strap, etc.)
Microphone: Monaural
Speaker: Monaural
Exif Print: Compatible
PRINT Image Matching III: Compatible
PictBridge: Compatible

[BC-CS2B Ni-MH battery charger]

Power requirements: AC 100 V to 240 V,
50/60 Hz, 3 W
Output voltage: AA: DC 1.4 V 400 mA × 2
AAA: DC 1.4 V 160 mA × 2
Operating temperature: 0 to +40°C (+32 to
+104°F)
Storage temperature: –20 to +60°C (–4 to +140°F)
Dimensions: Approx. 71×30×91 mm
(2 7/8×1 3/16×3 5/8 inches) (W/H/D)
Mass: Approx. 90 g (3 oz)

Design and specifications are subject to change
without notice.

CAUTION

Danger of explosion if battery is incorrectly replaced.
Replace only with the same or equivalent type.

SAFETY-RELATED COMPONENT WARNING!!

COMPONENTS IDENTIFIED BY MARK \triangle OR DOTTED LINE WITH MARK \triangle ON THE SCHEMATIC DIAGRAMS AND IN THE PARTS LIST ARE CRITICAL TO SAFE OPERATION. REPLACE THESE COMPONENTS WITH SONY PARTS WHOSE PART NUMBERS APPEAR AS SHOWN IN THIS MANUAL OR IN SUPPLEMENTS PUBLISHED BY SONY.

ATTENTION AU COMPOSANT AYANT RAPPORT À LA SÉCURITÉ!

LES COMPOSANTS IDENTIFIÉS PAR UNE MARQUE \triangle SUR LES DIAGRAMMES SCHÉMATIQUES ET LA LISTE DES PIÈCES SONT CRITIQUES POUR LA SÉCURITÉ DE FONCTIONNEMENT. NE REMPLACER CES COMPOSANTS QUE PAR DES PIÈCES SONY DONT LES NUMÉROS SONT DONNÉS DANS CE MANUEL OU DANS LES SUPPLÉMENTS PUBLIÉS PAR SONY.

SAFETY CHECK-OUT

After correcting the original service problem, perform the following safety checks before releasing the set to the customer.

1. Check the area of your repair for unsoldered or poorly-soldered connections. Check the entire board surface for solder splashes and bridges.
2. Check the interboard wiring to ensure that no wires are "pinched" or contact high-wattage resistors.
3. Look for unauthorized replacement parts, particularly transistors, that were installed during a previous repair. Point them out to the customer and recommend their replacement.
4. Look for parts which, through functioning, show obvious signs of deterioration. Point them out to the customer and recommend their replacement.
5. Check the B+ voltage to see it is at the values specified.
6. FLEXIBLE Circuit Board Repairing
 - Keep the temperature of the soldering iron around 270°C during repairing.
 - Do not touch the soldering iron on the same conductor of the circuit board (within 3 times).
 - Be careful not to apply force on the conductor when soldering or unsoldering.

Unleaded solder

Boards requiring use of unleaded solder are printed with the lead-free mark (LF) indicating the solder contains no lead.

(Caution: Some printed circuit boards may not come printed with the lead free mark due to their particular size.)



: LEAD FREE MARK

Unleaded solder has the following characteristics.

- Unleaded solder melts at a temperature about 40°C higher than ordinary solder.
Ordinary soldering irons can be used but the iron tip has to be applied to the solder joint for a slightly longer time.
Soldering irons using a temperature regulator should be set to about 350°C.
Caution: The printed pattern (copper foil) may peel away if the heated tip is applied for too long, so be careful!
- Strong viscosity
Unleaded solder is more viscous (sticky, less prone to flow) than ordinary solder so use caution not to let solder bridges occur such as on IC pins, etc.
- Usable with ordinary solder
It is best to use only unleaded solder but unleaded solder may also be added to ordinary solder.

1. SERVICE NOTE

1-1. PROCESS AFTER FIXING FLASH ERROR

Method for Initializing the Flash Error

Initialize

Initializes the setting to the default setting.
Images stored in the internal memory are retained.

- ① Select [OK] with ▲ on the control button, then press ●.
The message “Initialize all settings Ready?” appears.
- ② Select [OK] with ▲, then press ●.
The settings are reset to the default setting.

To cancel the resetting

Select [Cancel] in step ① or ②, then press ●.

- Make sure that the power is not disconnected during resetting.

1-2. METHOD FOR COPYING OR ERASING THE DATA IN INTERNAL MEMORY

The data can be copied/erased by the operations on the Setup screen. (When erasing the data, execute formatting the internal memory.)

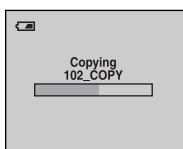
Note: When replacing the camera, erase the data in internal memory of the board before replacement.

Method for Copying the Data in Internal Memory

Copy



Copies all images in the internal memory to a “Memory Stick Duo”.

- ① Insert a “Memory Stick Duo” having 64 MB or larger capacity.
- ② Select [OK] with ▲ on the control button, then press ●.
The message “All data in internal memory will be copied Ready?” appears.
- ③ Select [OK] with ▲, then press ●.
Copying starts.



To cancel the copying

Select [Cancel] in step ② or ③, then press ●.

- Use fully charged Nickel-Metal Hydride batteries or the AC Adaptor (not supplied). If you attempt to copy image files using batteries with little remaining charge, the batteries may run out, causing copying to fail or possibly corrupting the data.
- You cannot copy individual images.
- The original images in the internal memory are retained even after copying. To delete the contents of the internal memory, remove the “Memory Stick Duo” after copying, then execute the [Format] command in  (Internal Memory Tool).
- When you copy the data in the internal Memory to the “Memory Stick Duo”, all the data will be copied. You cannot choose a specific folder on the “Memory Stick Duo” as the destination for the data to be copied.
- Even if you copy data, a  (Print order) mark is not copied.

Method for Formatting the Internal Memory

This item does not appear when a “Memory Stick Duo” is inserted in the camera.

Format

Formats the internal memory.

- Note that formatting irrevocably erases all data in the internal memory, including even protected images.

- ① Select [OK] with ▲ on the control button, then press ●.
The message “All data in internal memory will be erased Ready?” appears.
- ② Select [OK] with ▲, then press ●.
The format is complete.

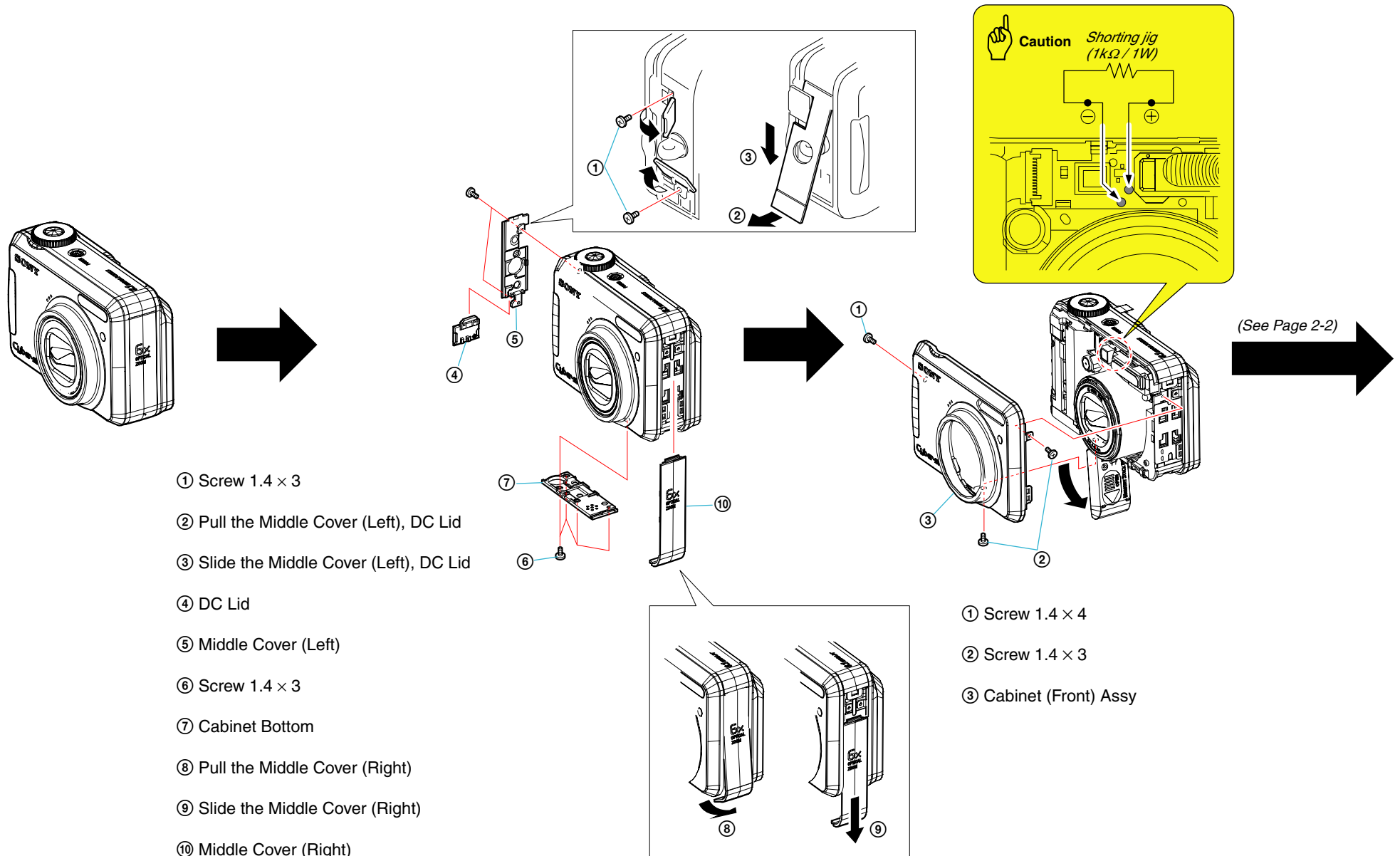
To cancel the formatting

Select [Cancel] in step ① or ②, then press ●.

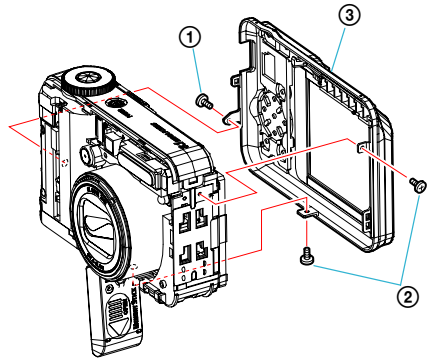
2. DISASSEMBLY

The following flow chart shows the disassembly procedure.

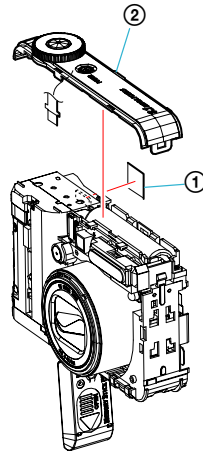
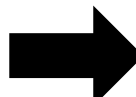
2-1. DISASSEMBLY



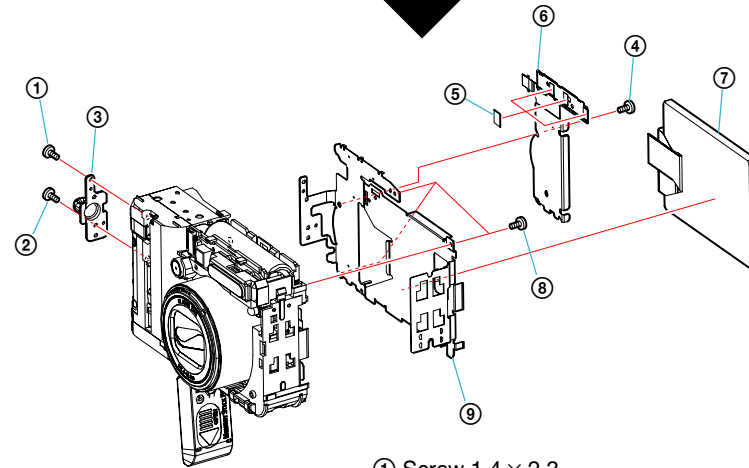
(From 2-1 Page)



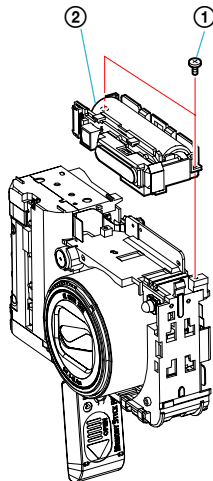
- ① Screw 1.4 × 4
- ② Screw 1.4 × 3
- ③ Cabinet (Rear) Assy



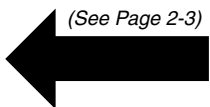
- ① Polyimide Sheet
- ② Cabinet (Upper) Block Assy



- ① Screw 1.4 × 2.3
- ② Screw 1.4 × 3
- ③ Strap Bracket
- ④ Screw 1.4 × 1.3
- ⑤ Adhesive Sheet
- ⑥ SW Flexible Block Assy
- ⑦ LCD Block Assy
- ⑧ Screw 1.4 × 3
- ⑨ LCD Block Assy

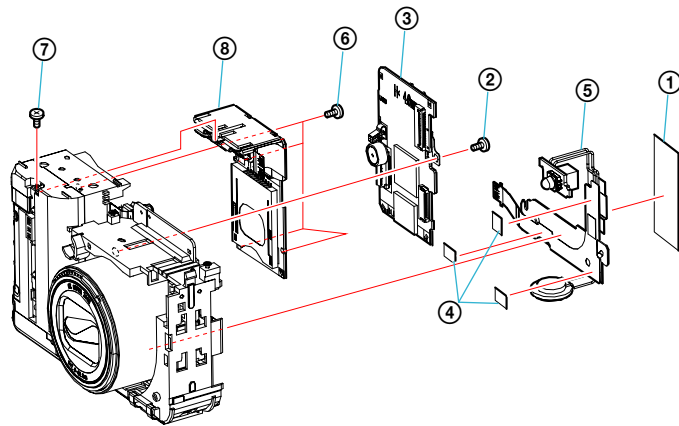


- ① Screw 1.4 × 3
- ② ST Block Assy

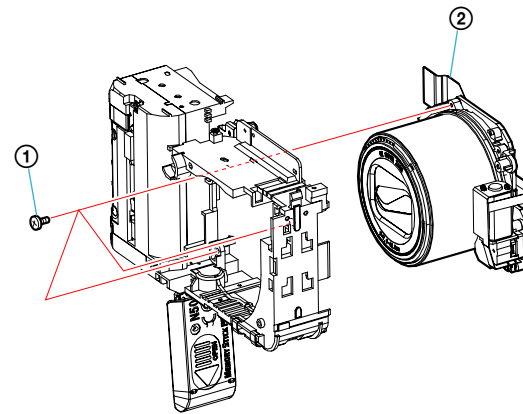
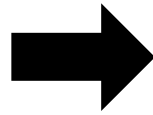


(See Page 2-3)

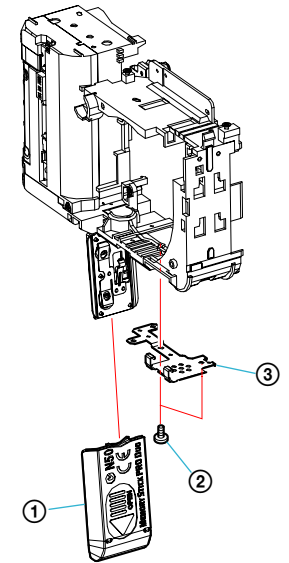
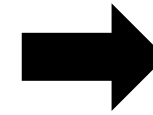
(From 2-2 Page)



- ① Polyimide Sheet
- ② Screw 1.4 × 2.5
- ③ MAIN BOARD, COMPLETE
- ④ Adhesive Sheet
- ⑤ Relay Flexible Block Assy
- ⑥ Screw 1.4 × 3
- ⑦ Screw 1.4 × 3
- ⑧ DC BOARD, COMPLETE



- ① Screw 1.4 × 4
- ② Lens Assembly

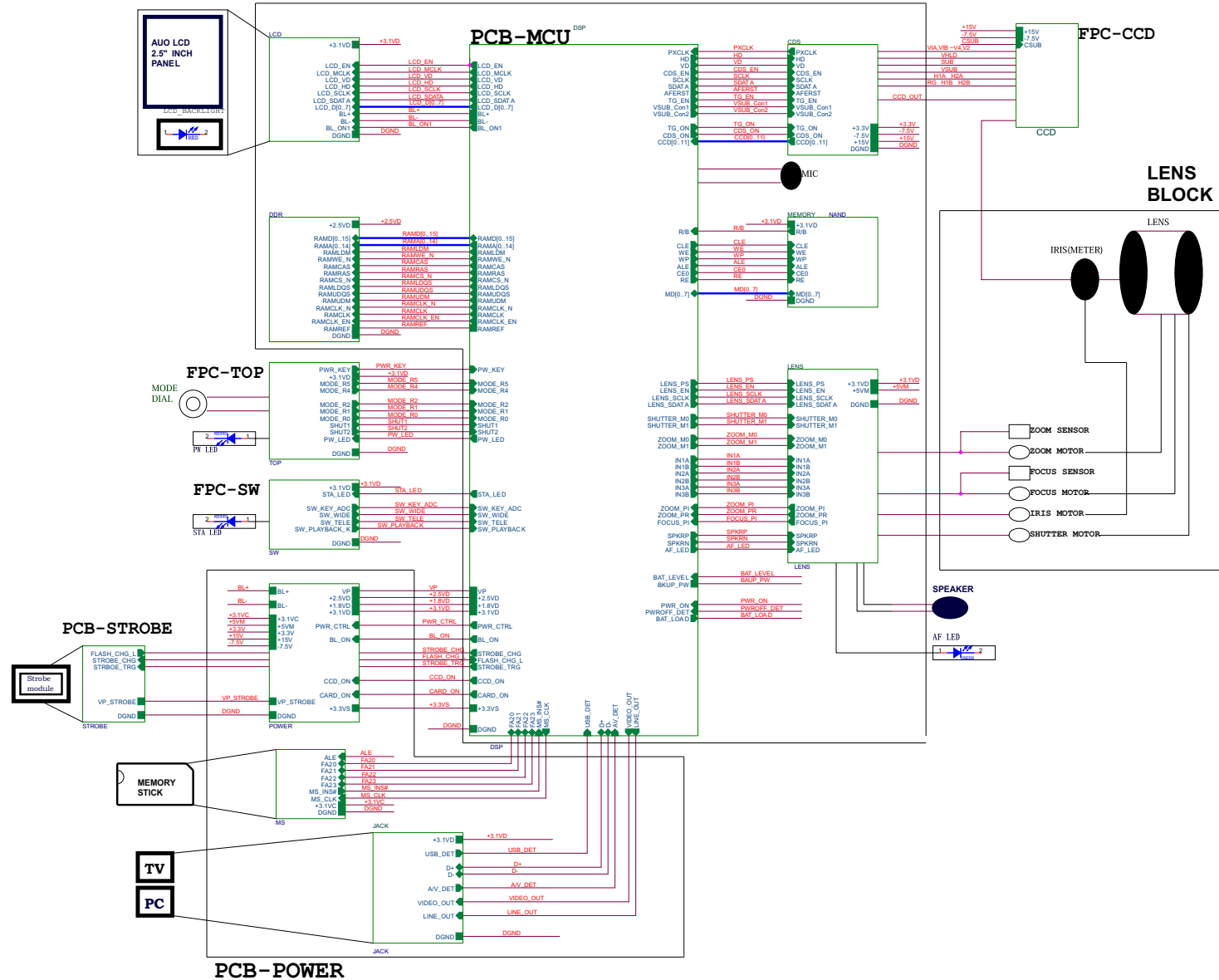


- ① BT Lid
- ② Screw 1.4 × 2.3
- ③ Speaker Retainer Sheet Metal

3. BLOCK DIAGRAMS

3-1. OVERALL BLOCK DIAGRAM

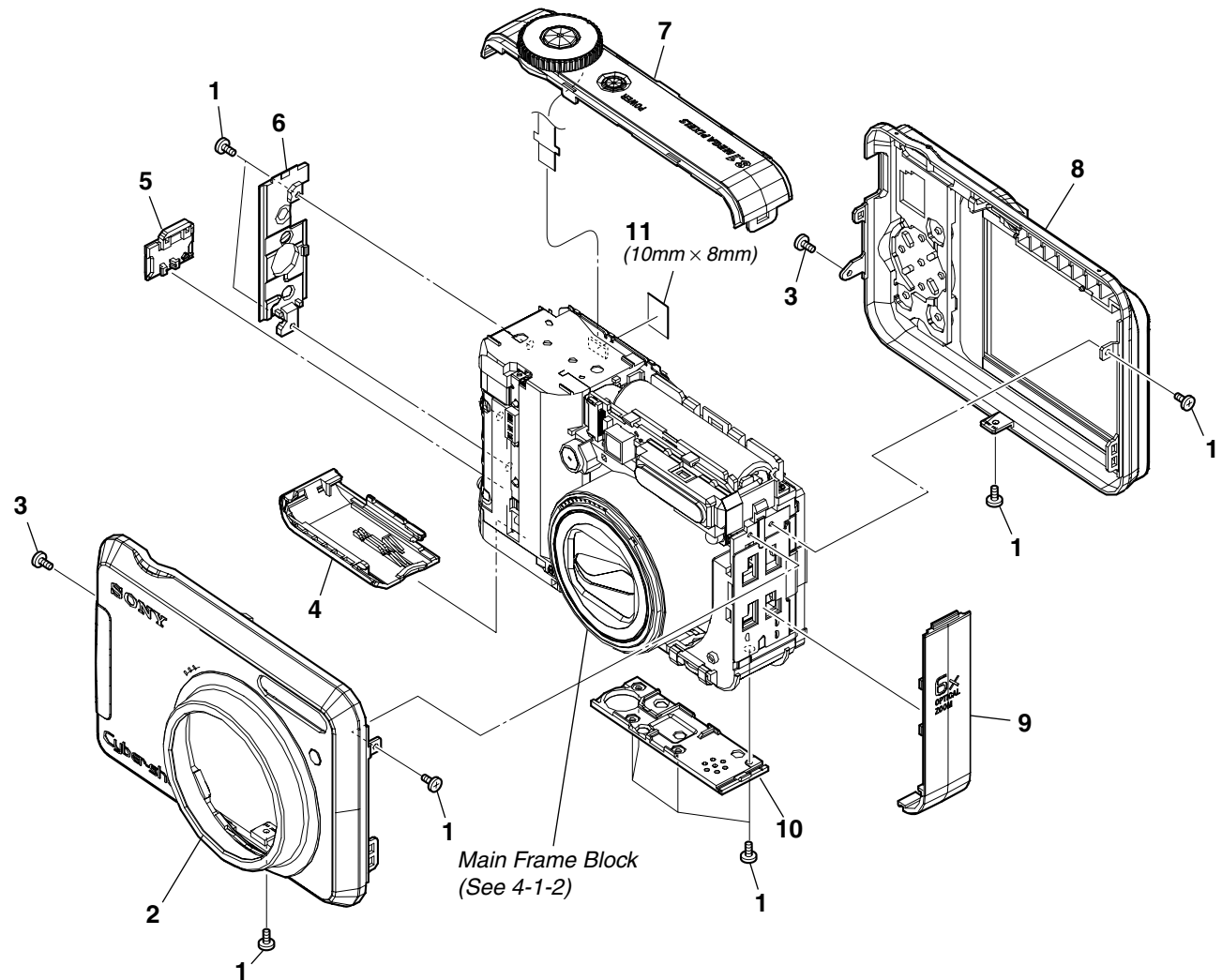
SDS-8670 BLOCK DIAGRAM



4. REPAIR PARTS LIST

4-1. EXPLODED VIEWS

4-1-1. OVERALL SECTION



CAUTION:
For the part of 11, cut SHEET POLYIMIDE (2-580-751-01) into the desired length and use it.

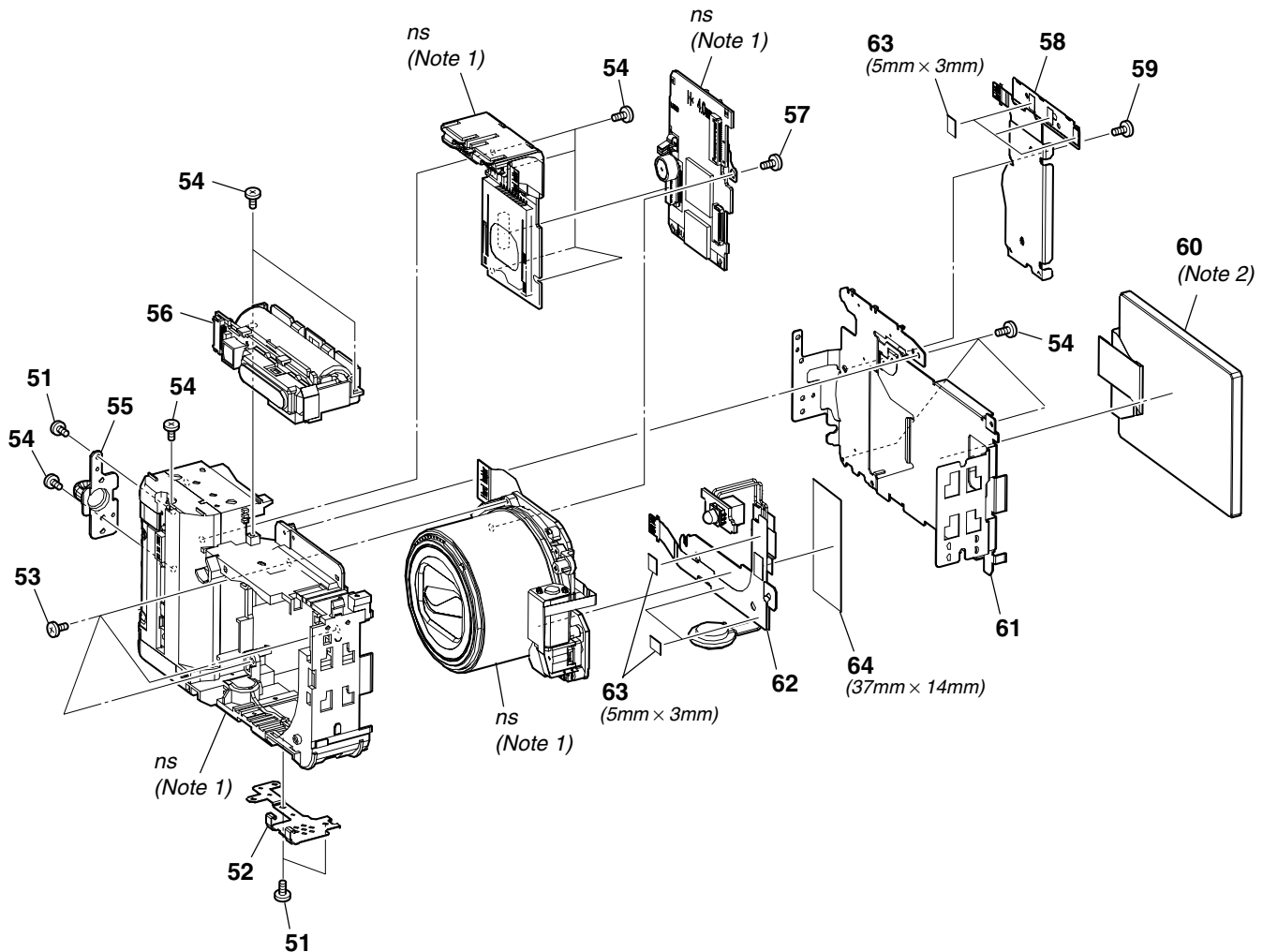
Ref. No.	Part No.	Description
1	3-219-185-01	SCREW1.4*3
2	X-2179-178-1	CABINET (FRONT) ASSY
3	3-219-186-01	SCREW1.4*4
4	3-217-240-01	LID, BT
5	3-217-243-01	LID, DC

Ref. No.	Part No.	Description
6	3-217-242-01	MIDDLE COVER(LEFT)
7	A-1309-996-A	CABINET (UPPER) BLOCK ASSY
8	X-2179-177-1	CABINET (REAR) ASSY
9	3-217-241-01	MIDDLE COVER(RIGHT)
10	3-217-239-01	BOTTOM, CABINET
11	CAUTION	SHEET, POLYIMIDE

4. REPAIR PARTS LIST

4-1-2. MAIN FRAME BLOCK

ns: not supplied



(Note 1) In case of the lens assembly, MAIN BOARD (COMPLETE), DC BOARD (COMPLETE) or MAIN FRAME ASSY (COMPLETE) failure, contact your local Sony service Headquarter for the measures.

(Note 2) The adjustment is not required after replacing the LCD block assembly.

CAUTION 1:
For the part of 63, cut SHEET, ADHESIVE (2-649-300-01) into the desired length and use it.

CAUTION 2:
For the part of 64, cut SHEET, POLYIMIDE (2-580-751-01) into the desired length and use it.

• Refer to cover for mark \triangle .

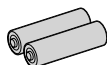
Ref. No.	Part No.	Description
51	3-219-188-01	SCREW1.4*2.3
52	3-217-246-01	SHEET METAL, SPEAKER RETAINER
53	3-219-186-01	SCREW1.4*4
54	3-219-185-01	SCREW1.4*3
55	3-217-244-01	BRACKET, STRAP
\triangle 56	A-1309-997-A	ST BLOCK ASSY

Ref. No.	Part No.	Description
57	3-269-878-01	SCREW1.4*2.5
58	A-1309-994-A	FLEXIBLE BLOCK ASSY, SW
59	3-219-187-01	SCREW1.4*1.3
60	A-1309-995-A	LCD BLOCK ASSY (Note 2)
61	3-217-245-01	FRAME, LCD
62	A-1309-998-A	FLEXIBLE BLOCK ASSY, RELAY
63	CAUTION 1	SHEET, ADHESIVE
64	CAUTION 2	SHEET, POLYIMIDE

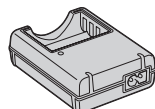
4. REPAIR PARTS LIST

4-2. ACCESSORIES

Note 1: This item is supplied with the unit as an accessory, but is not prepared as a service part.



HR6 (size AA) Nickel-Metal Hydride batteries
(Note 1)



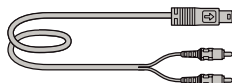
Ni-MH battery charger BC-CS2B
 ▲ 1-477-814-41 (US, CND)
 ▲ 1-477-814-51 (AEP, UK, E, AUS, HK, AR)
 ▲ 1-477-814-61 (KR, CH)



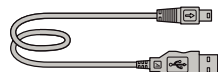
Power cord (mains lead)
 ▲ 1-823-945-41 (US, CND)
 ▲ 1-823-947-71 (KR)
 ▲ 1-827-826-41 (AEP, E)
 ▲ 1-827-945-61 (AUS)
 ▲ 1-832-106-31 (AR)
 ▲ 1-832-121-31 (CH)
 ▲ 1-832-169-31 (UK, HK)



Conversion (2P) adaptor (E)
 ▲ 1-569-008-12



Dedicated A/V cable
 3-196-980-01



Dedicated USB cable
 3-196-981-01



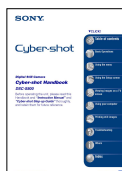
Wrist strap
 2-050-981-01



CD-ROM
 (Cyber-shot application software/
 "Cyber-shot Handbook"/
 "Cyber-shot Step-up Guide")
 3-198-856-02



Instruction Manual
 3-198-864-12 (ENGLISH) (CND, AEP, UK, E, HK, AUS)
 3-198-864-22 (FRENCH, ITALIAN) (CND, AEP)
 3-198-864-32 (SPANISH, PORTUGUESE) (AEP, E)
 3-198-864-42 (GERMAN, DUTCH) (AEP)
 3-198-864-52 (TRADITIONAL CHINESE,
 SIMPLIFIED CHINESE) (E, HK, CH)
 3-198-864-62 (RUSSIAN) (AEP)
 3-198-864-72 (ARABIC, PERSIAN) (E)
 3-198-864-82 (KOREAN) (KR)
 3-198-864-92 (POLISH, CZECH) (AEP)
 3-198-865-12 (HUNGARIAN, SLOVAK) (AEP)
 3-198-865-22 (SWEDISH, FINNISH) (AEP)
 3-198-865-32 (NORWEGIAN, DANISH) (AEP)
 3-198-865-42 (THAI, MALAYSIAN) (E)
 3-198-865-52 (TURKISH, GREEK) (AEP)
 3-198-865-62 (ENGLISH, SPANISH) (US)



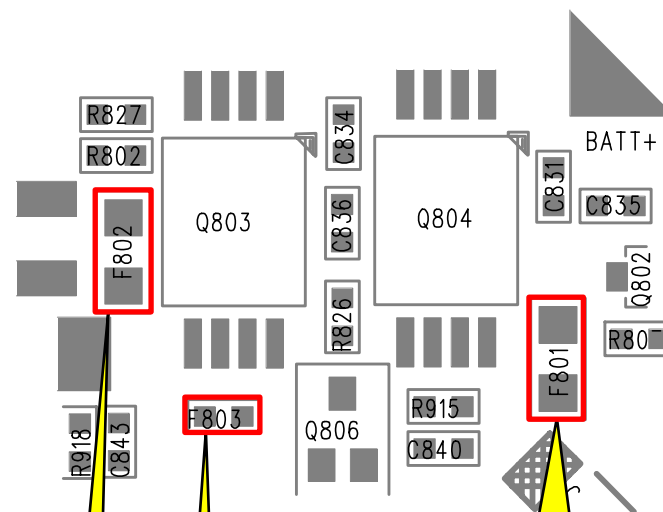
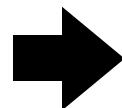
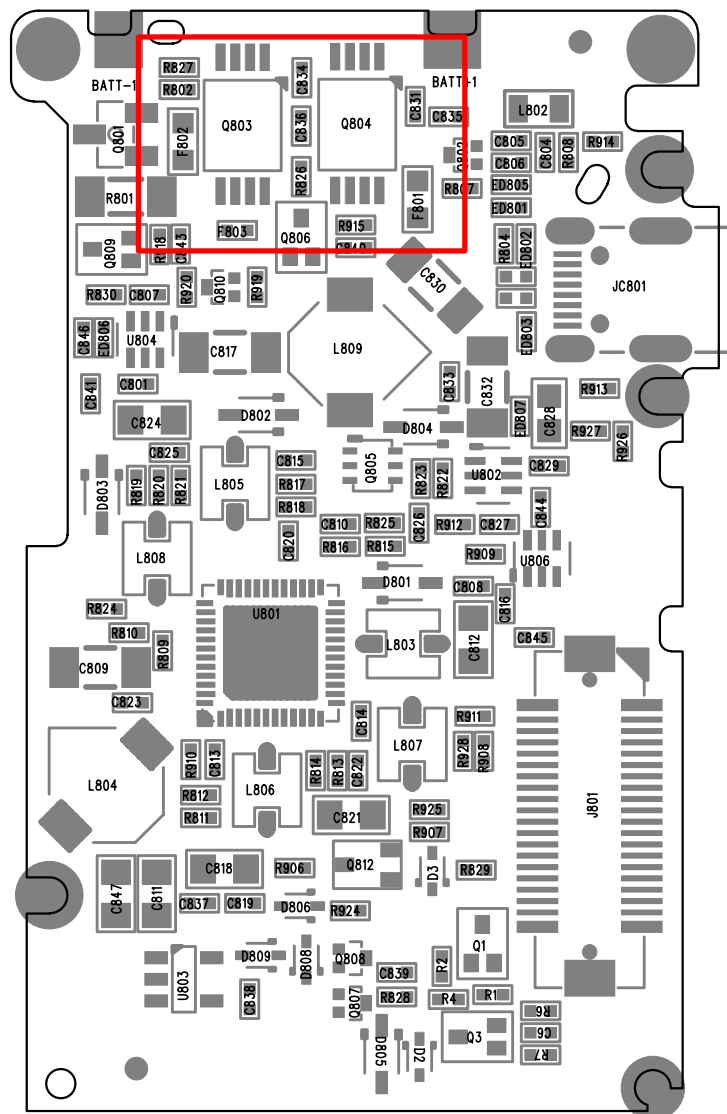
Cyber-shot Handbook(PDF)

The CD-ROM supplied contains all of language version of the Instruction Manual in pdf (Cyber-shot Handbook.pdf) for printing.
 Note: The printed matter is not supplied. If required, please order it with the part number below.

3-198-860-12 (ENGLISH)	3-198-861-52 (POLISH)
3-198-860-22 (FRENCH)	3-198-861-62 (CZECH)
3-198-860-32 (ITALIAN)	3-198-861-72 (HUNGARIAN)
3-198-860-42 (SPANISH)	3-198-861-82 (SLOVAK)
3-198-860-52 (PORTUGUESE)	3-198-861-92 (SWEDISH)
3-198-860-62 (GERMAN)	3-198-862-12 (FINNISH)
3-198-860-72 (DUTCH)	3-198-862-22 (NORWEGIAN)
3-198-860-82 (TRADITIONAL CHINESE)	3-198-862-32 (DANISH)
3-198-860-92 (SIMPLIFIED CHINESE)	3-198-862-42 (THAI)
3-198-861-12 (RUSSIAN)	3-198-862-52 (MALAYSIAN)
3-198-861-22 (ARABIC)	3-198-862-62 (TURKISH)
3-198-861-32 (PERSIAN)	3-198-862-72 (GREEK)
3-198-861-42 (KOREAN)	

[Regarding Fuse]

- DC BOARD, COMPLETE



Ref. No : F801
MANUFACTURER: AFM, Inc.
TYPE: F0603FA1000V032T
RATING: 1.0A

Ref. No : F803
MANUFACTURER: AFM, Inc.
TYPE: F0402FA1500V024T
RATING: 1.5A

Ref. No : F802
MANUFACTURER: KAMAYA ELECTRIC CO.,LTD.
TYPE: FCC16162AD
RATING: 1.6A

Revision History

Ver.	Date	History	Contents	S.M. Rev. issued
1.0	2007.05	Official Release	—	—
1.1	2007.10	Revised-1	<ul style="list-style-type: none"> Change of Accessories S.M. Revised: Page 4-3	Yes