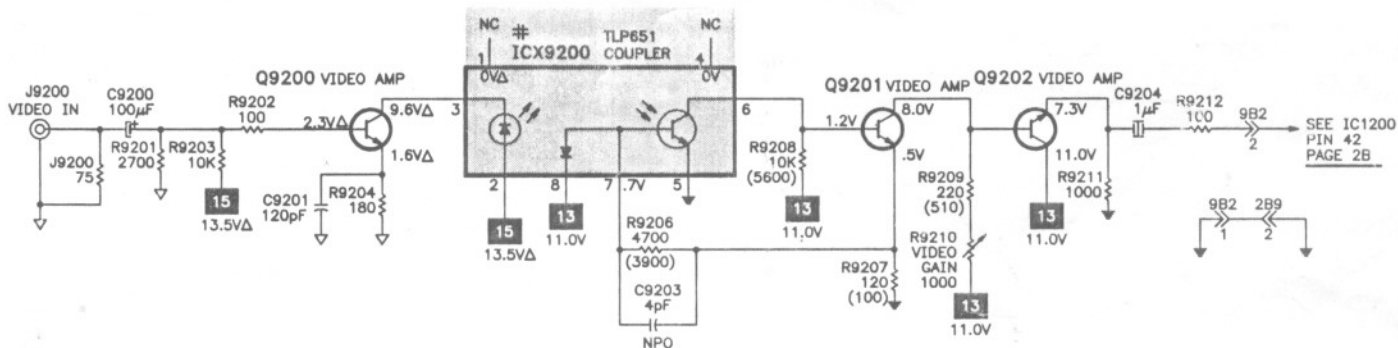
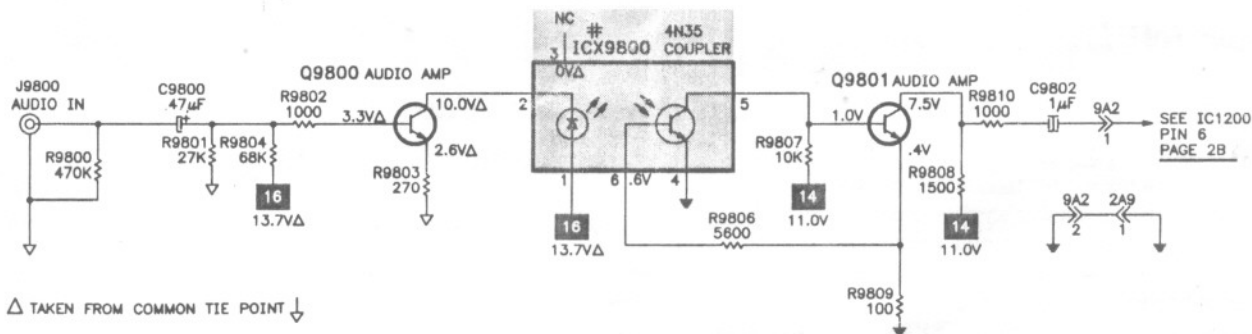


AUDIO / VIDEO INPUT JACK SCHEMATIC





For SAFETY use only equivalent replacement part, see parts list.

✖ Circuitry not used in some versions.

--- Circuitry used in some versions.

⬇ Ground

⬆ Chassis ground

⬇ Common tie point

△ Taken from common tie point

3 Schematic CIRCUITRACE ®: Voltage source tie point.

A— Cabling: Heavy lines reduce use of multiple lines.

Waveforms and voltages are taken from ground, noted otherwise.

Waveforms taken with triggered scope and color.

Waveform voltage is peak to peak. Timebase is per division. Waveforms shown at 10 divisions.

Supply voltages maintained as seen at input.

Voltages measured with digital meter and a 1000 Hz signal, with colorbar pattern, applied to antenna.

Controls adjusted for normal operation.

Capacitors are 50 volts or less, 5% or greater unless noted.

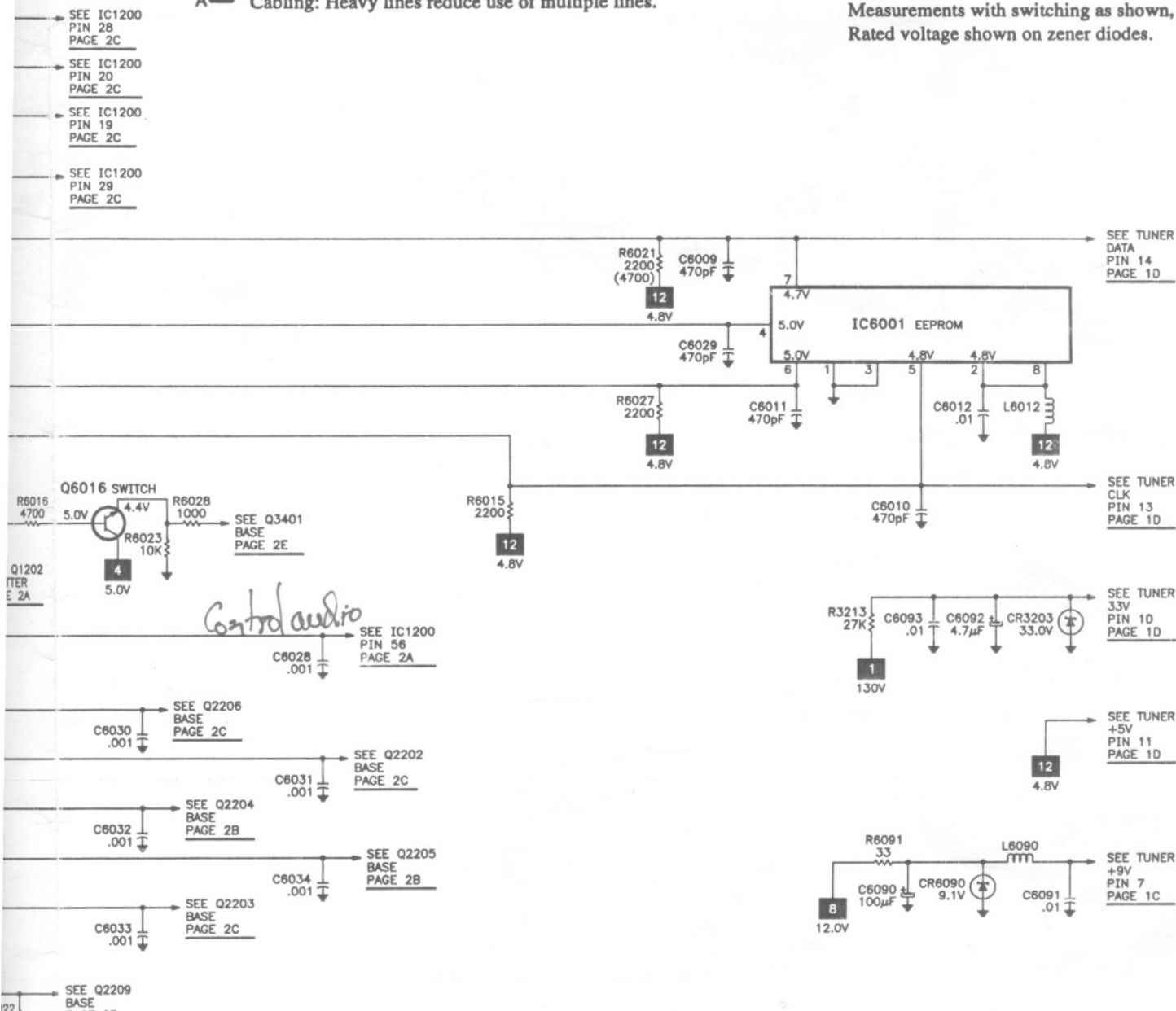
Electrolytic capacitors are 50 volts or less, 20% or greater unless noted.

Resistors are 1/2W or less, 5% or greater unless noted.

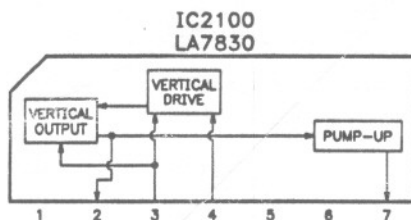
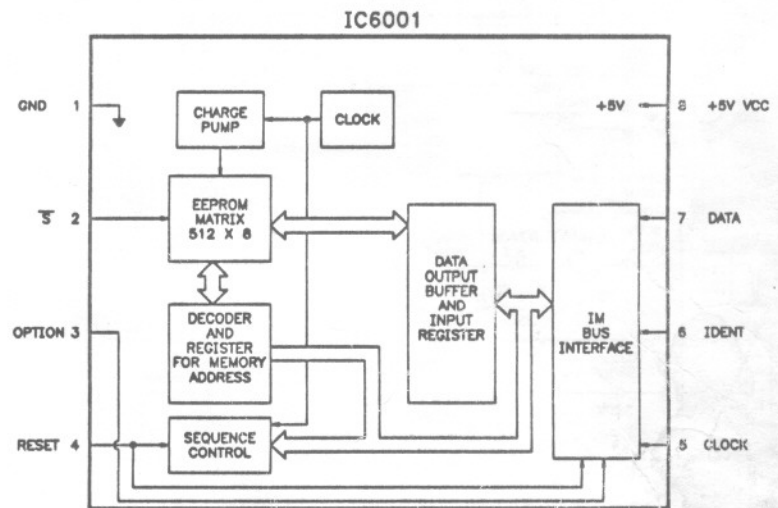
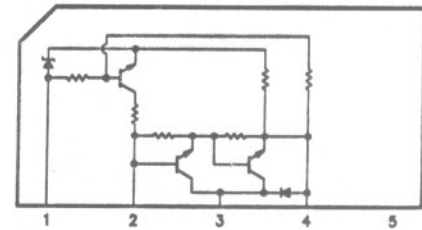
Value in () used in some versions.

Measurements with switching as shown, unless noted.

Rated voltage shown on zener diodes.



IC3400
STR30130



MODELS SMS2049S, SMS2049S7, SMS2049SM, SMS2049X