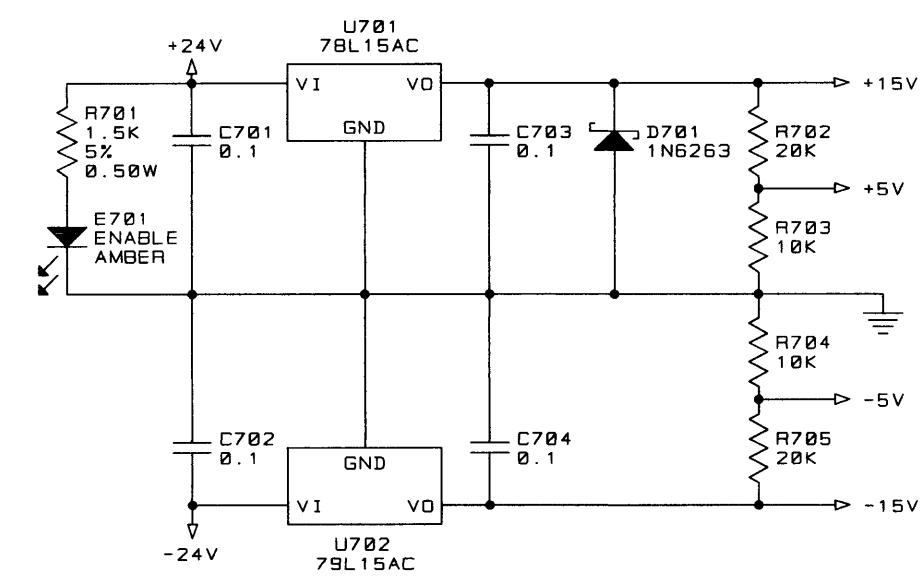
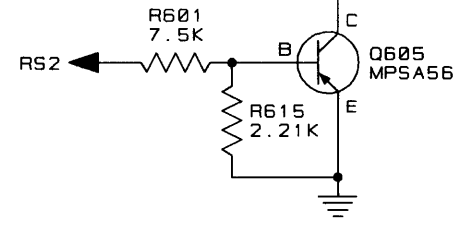
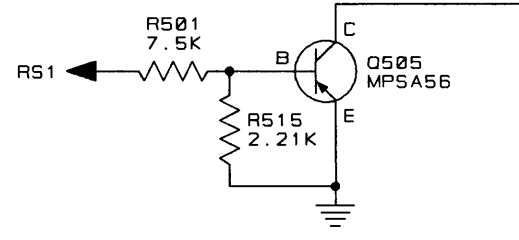
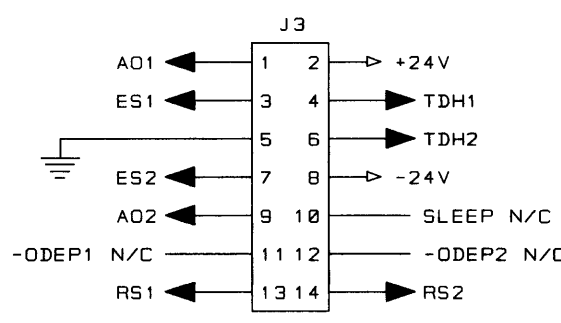
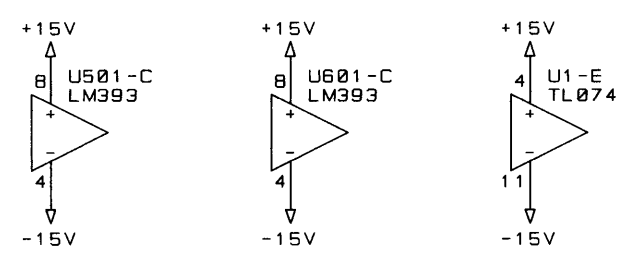
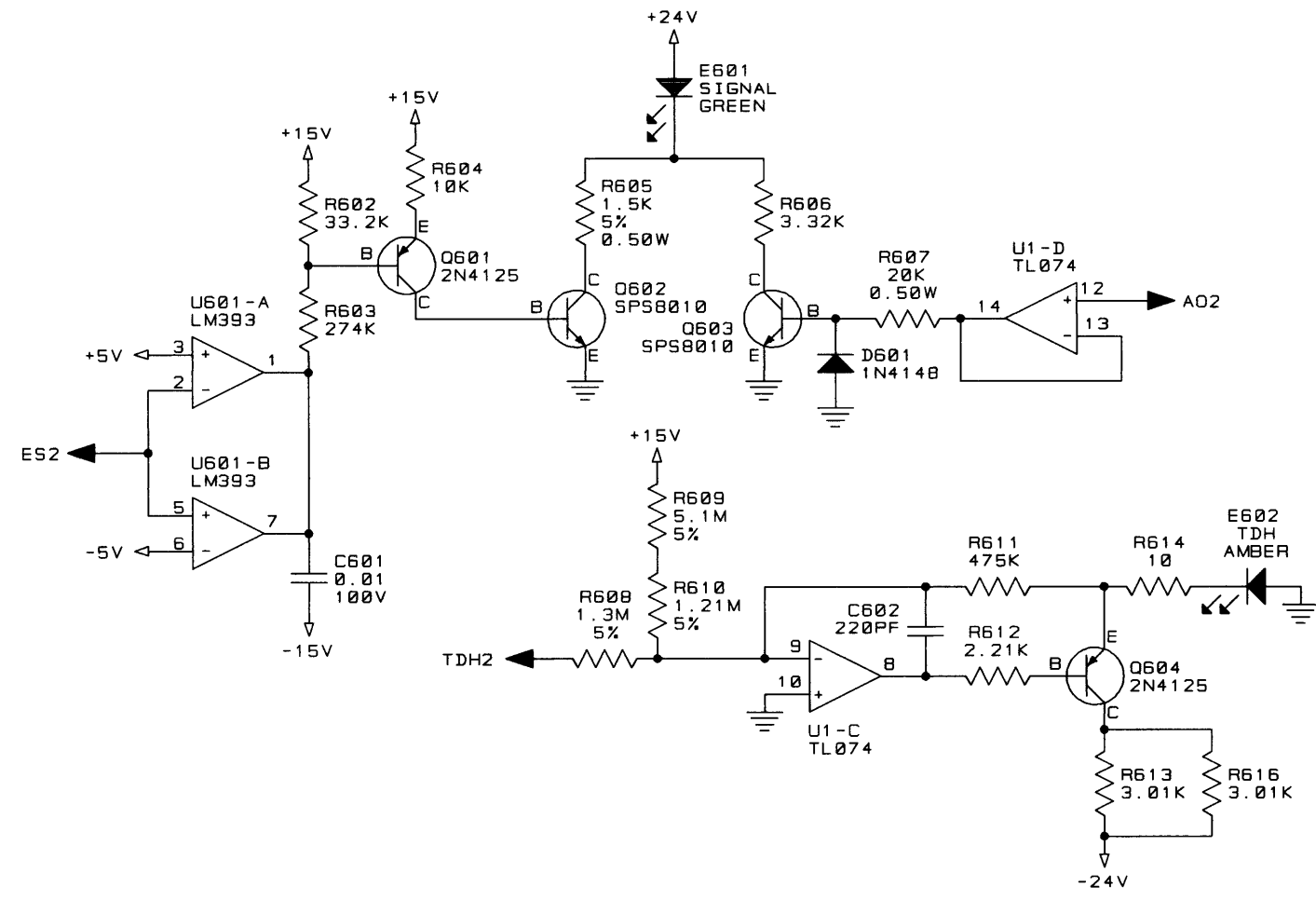
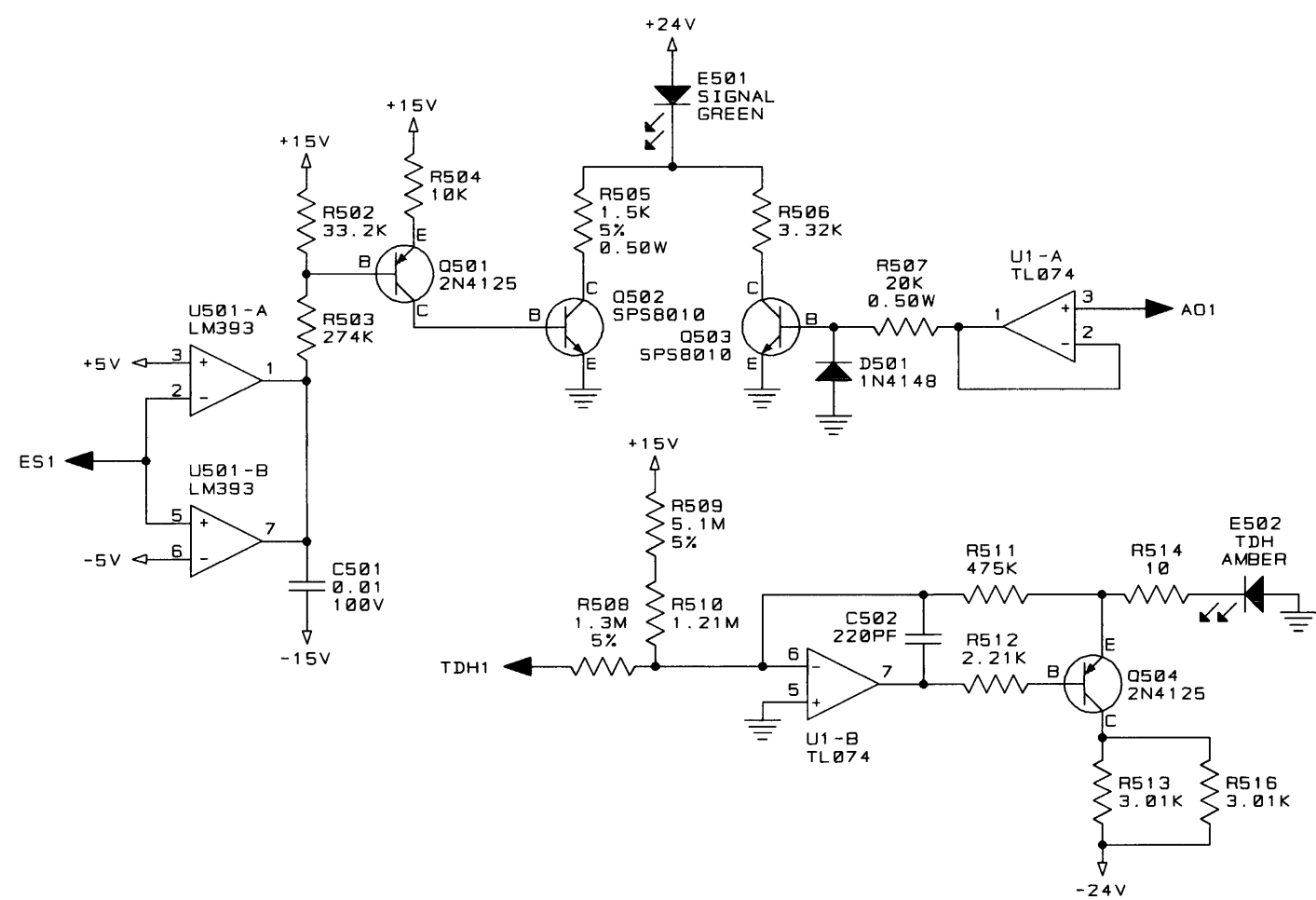


E.C.N.	ZONE	REV	DESCRIPTION	DATE	BY	APPROVAL				
						CK	CM	EE	PE	
99E0112		A	INITIAL RELEASE FOR PRODUCTION.	01-29-99	KLW	JAW	CB			MK
		B	U1 WAS TL072. REVISED NOTE 3.	03-08-99	KLW					



LAST USED	NOT USED
C704	503-600, 603-700
D701	502-600, 602-700
E701	502-600, 602-700
J10	1, 2, 4-9
Q605	506-600
R705	516-600, 616-700
U702	2-500, 502-600, 602-700

- NOTES:
- ALL RESISTORS ARE IN OHMS, 1/4W, 1%, UNLESS OTHERWISE SPECIFIED.
 - ALL CAPACITORS ARE IN MICROFARADS, UNLESS OTHERWISE SPECIFIED.
 - THIS SCHEMATIC APPLIES TO:
PRINTED WIRING BOARD 127176-2.
PRINTED WIRING ASSEMBLY 127177-2.

CROWN INTERNATIONAL, INC.
1718 W. MISHAWAKA RD. ELKHART IN. 46517 PHONE (219) 294-8000

SCHEM. MA2402 DISPLAY

TOL. UNLESS SPECIFIED
X.XX = ±0.02"
X.XXX = ±0.010"
DRILLS = ±0.003"

PRINTS TO	DRAWN BY	KLW	01-29-99	APPROVED BY:	DO NOT SCALE PRINT
G	CHECKED	JAW	02-03-99	ME	SUPERSEDES
	SCALE	NONE		EE	E.C.
	PROJ. #	MD439P0		PE MK	DWG. NO.
	FILENAME: 127175-B.SCM			NEXT ASSEMBLY:	127175

THESE DRAWINGS AND SPECIFICATIONS ARE THE PROPERTY OF CROWN INTERNATIONAL, INC. AND SHALL NOT BE REPRODUCED, COPIED, OR USED AS THE BASIS FOR THE MANUFACTURE OR SALE OF APPARATUS OR DEVICES WITHOUT PERMISSION.

REV
B