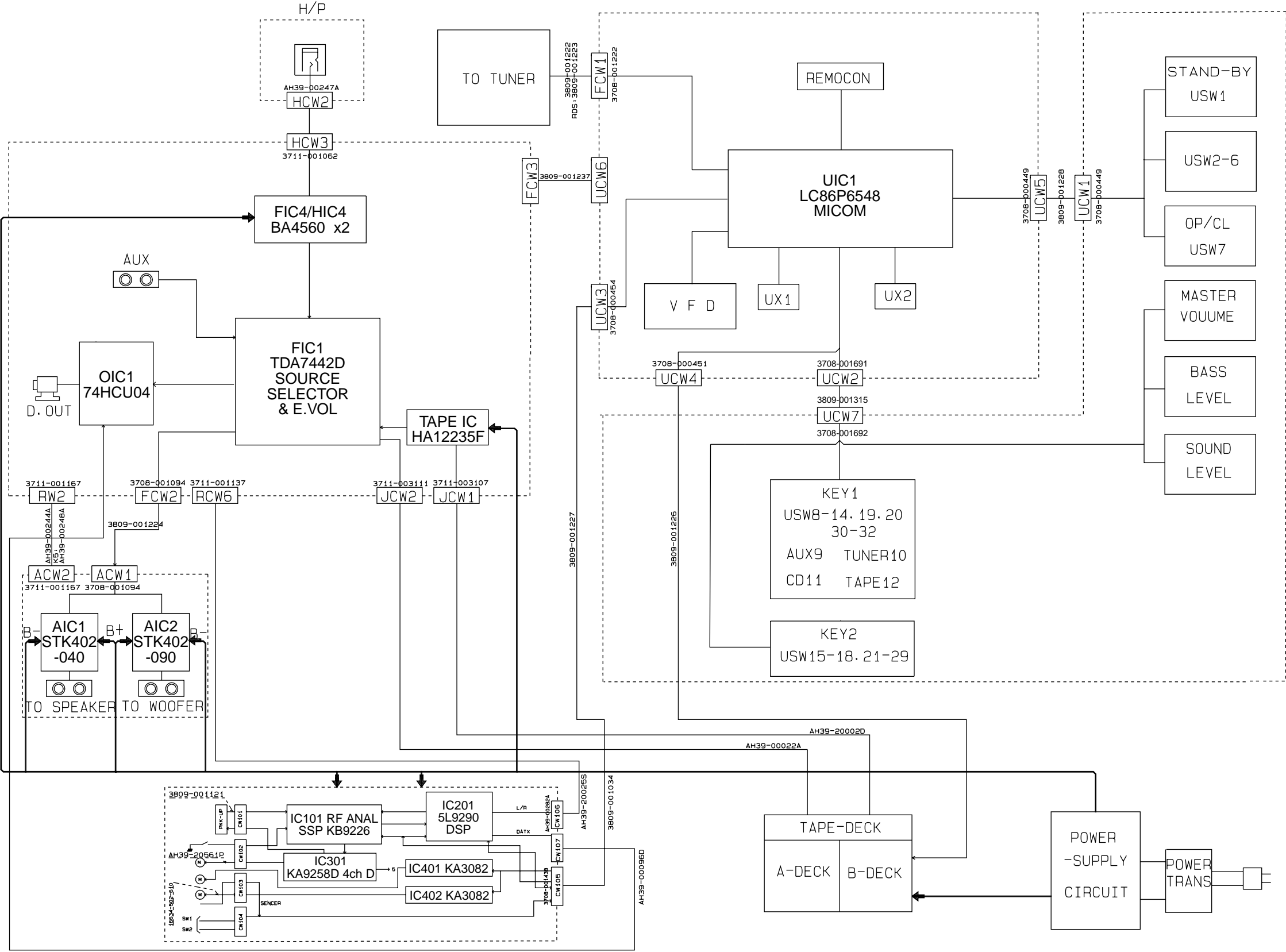


Block diagram



SL
B+

Standard schematic diagrams

■ Main section

Sheet 3/5

5

Sheet 2/5

4

Sheet 5/5

3

Sheet 4/5

2

1

SHEET NUMBER	CIRCUIT DESCRIPTION
1/5	Main
2/5	FL display & System control
3/5	Amp.
4/5	CD
5/5	Tuner

➡ MAIN signal

➡ TUNER signal

➡ TAPE P.B. signal

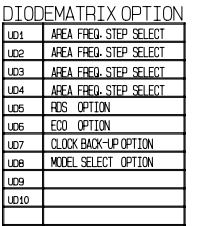
➡ CD signal

➡ TAPE REC. signal

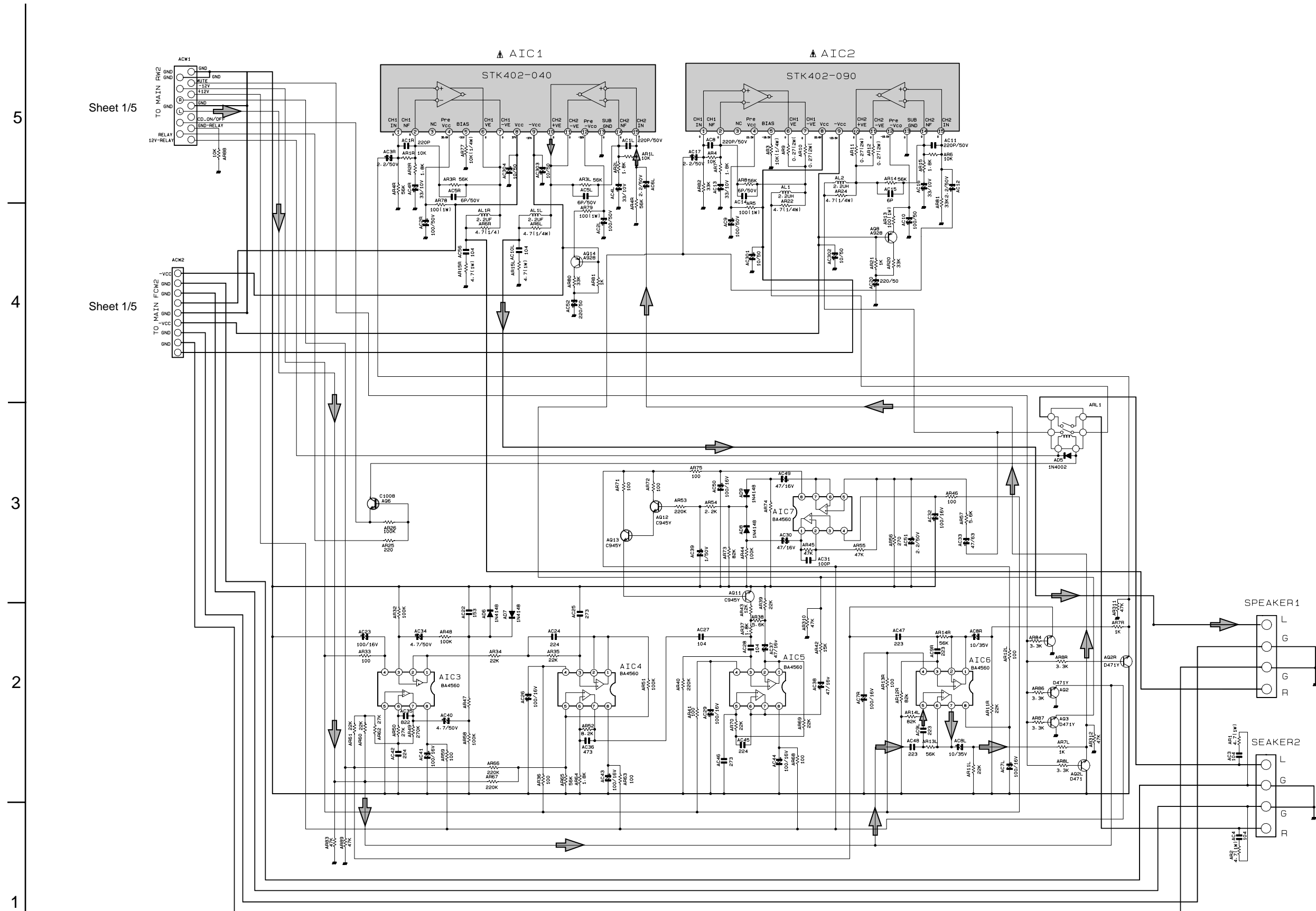
⚠ Parts are safety assurance parts.
When replacing those parts, make
sure to use the specified parts.


SHEET 1/5

Sheet 4/5



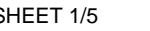
■ **Amp. section**



 **⚠** Parts are safety assurance parts. When replacing those parts, make sure to use the specified parts.

➔ MAIN signal

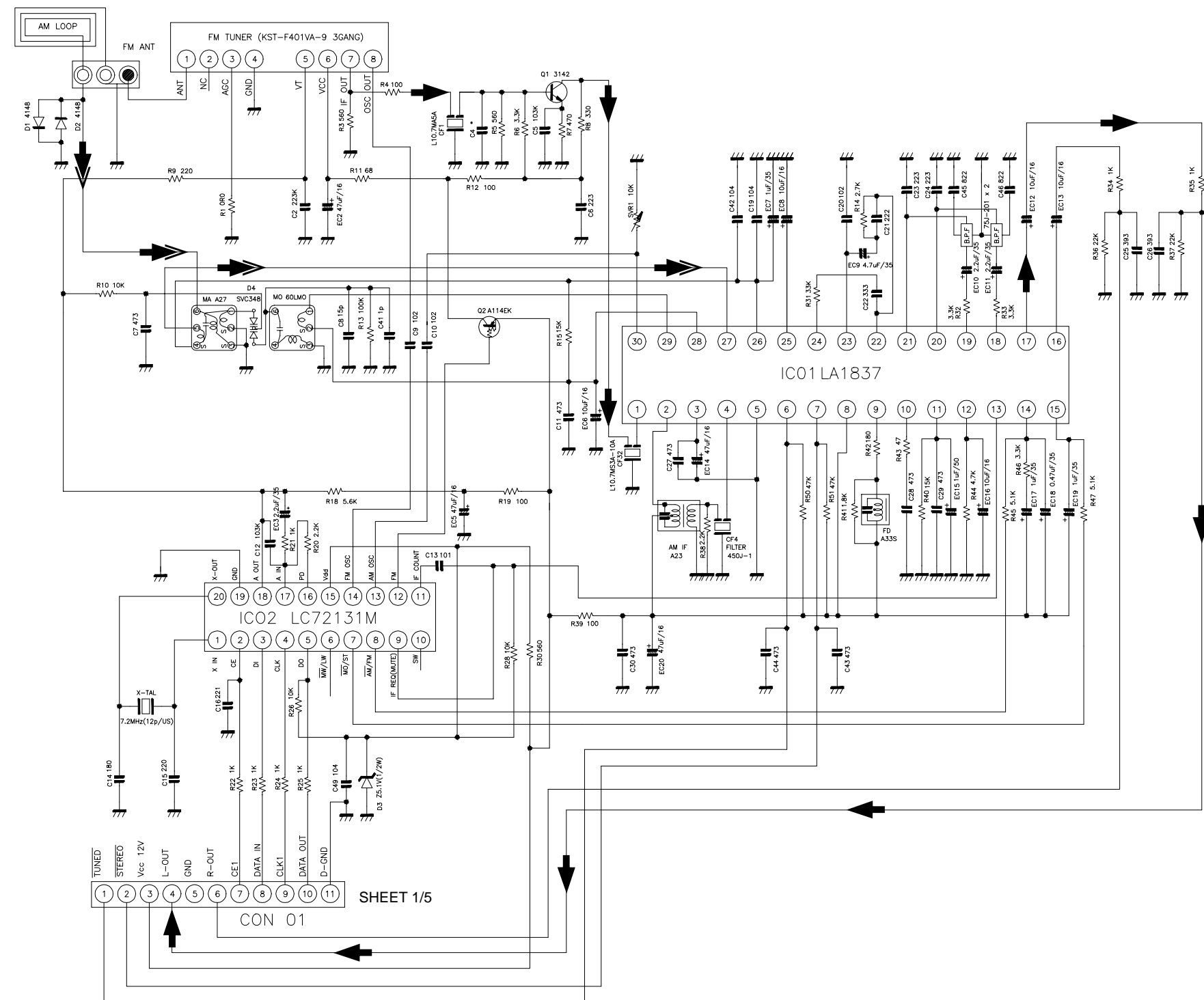
➡ CD signal



SHEET 1/5

SHEET 2/5

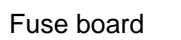
Tuner section



➡ FM/TUNER signal
➡➡ AM signal

■ Main board

MX-G500/K50/G700 MAIN PCB

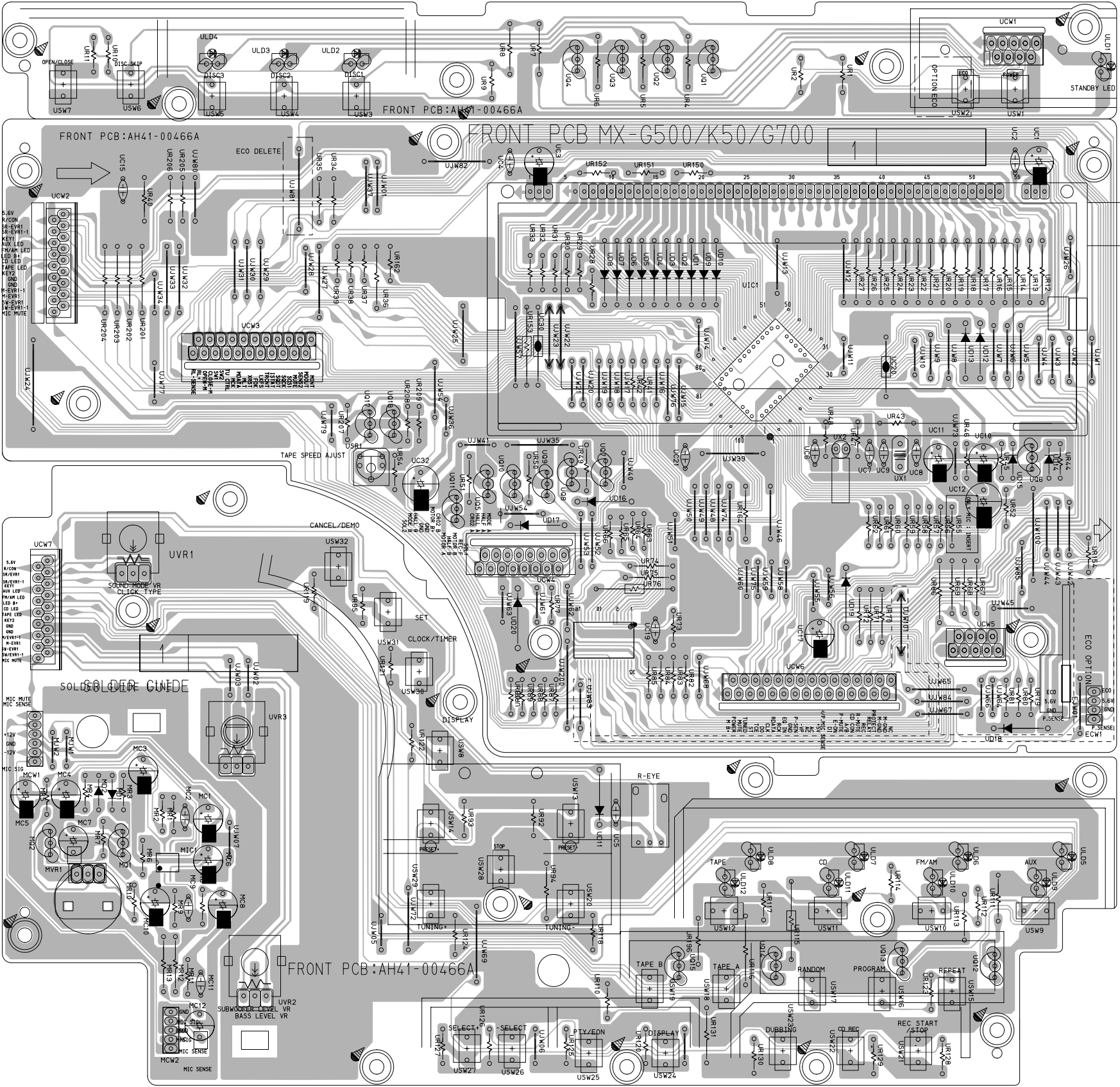


■ Front board

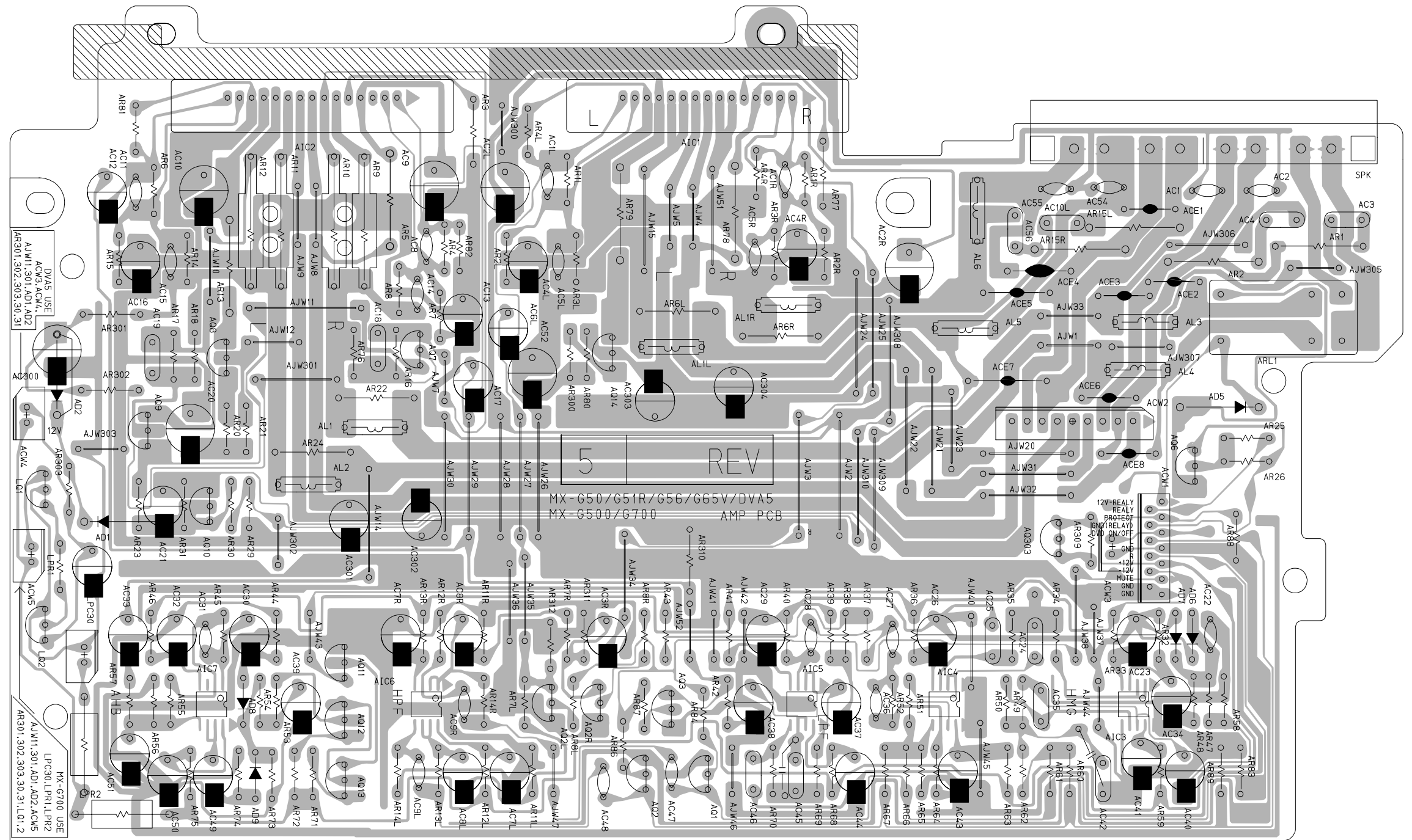
Power / CD switch board

FL display & system control board

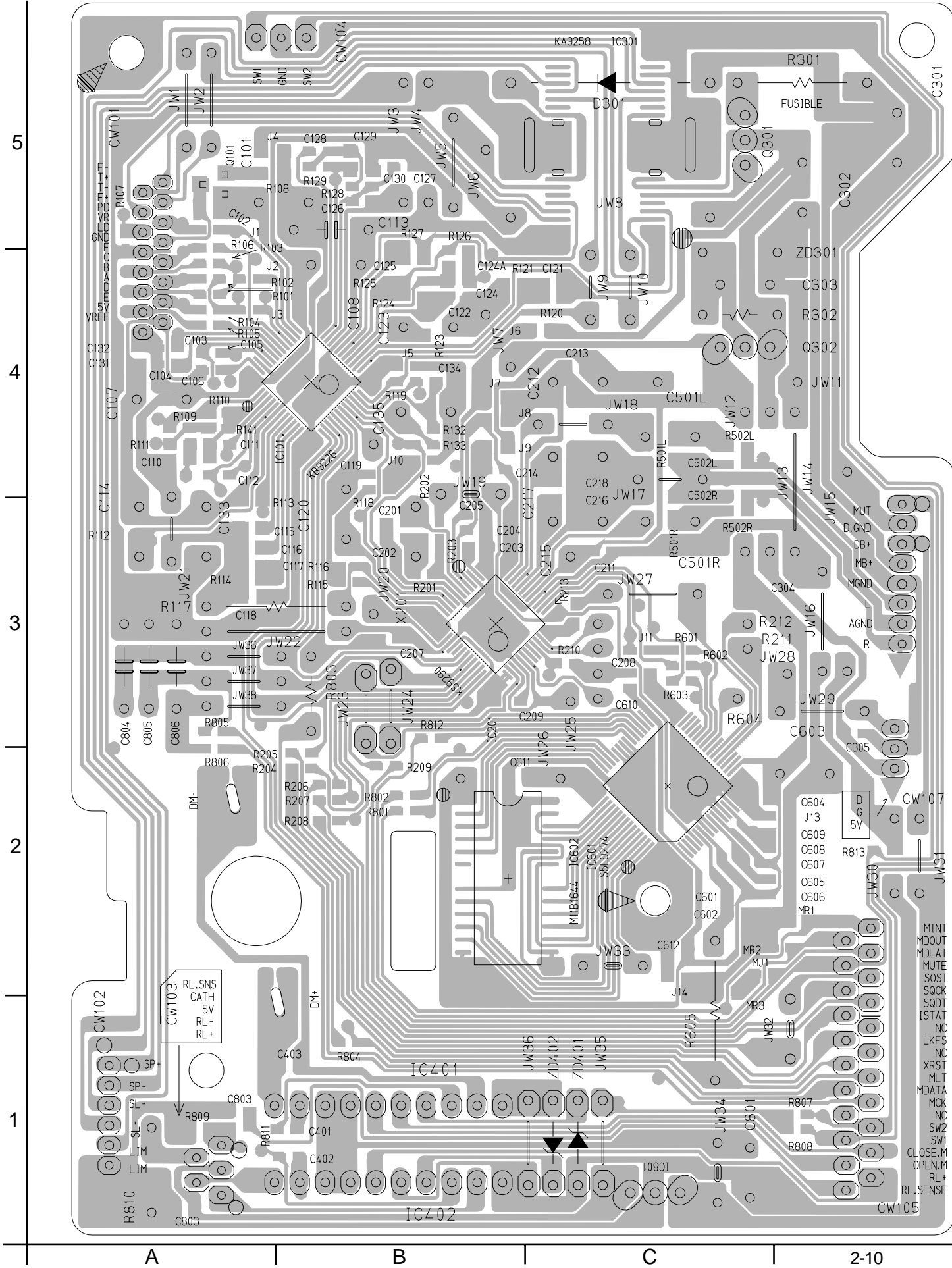
Front key switch board



■ Amp. board



■ **CD servo board**



■ Tuner board

