
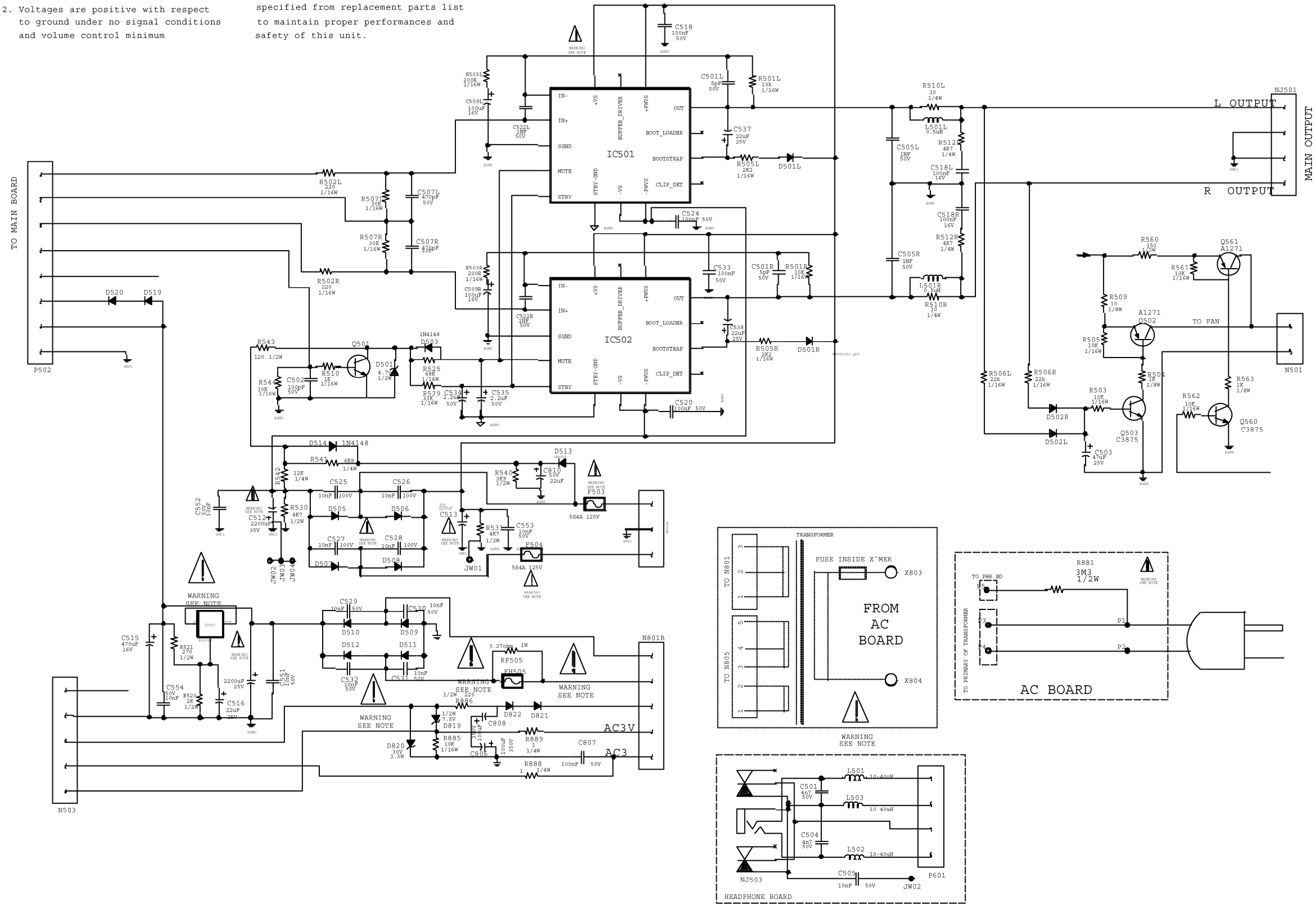


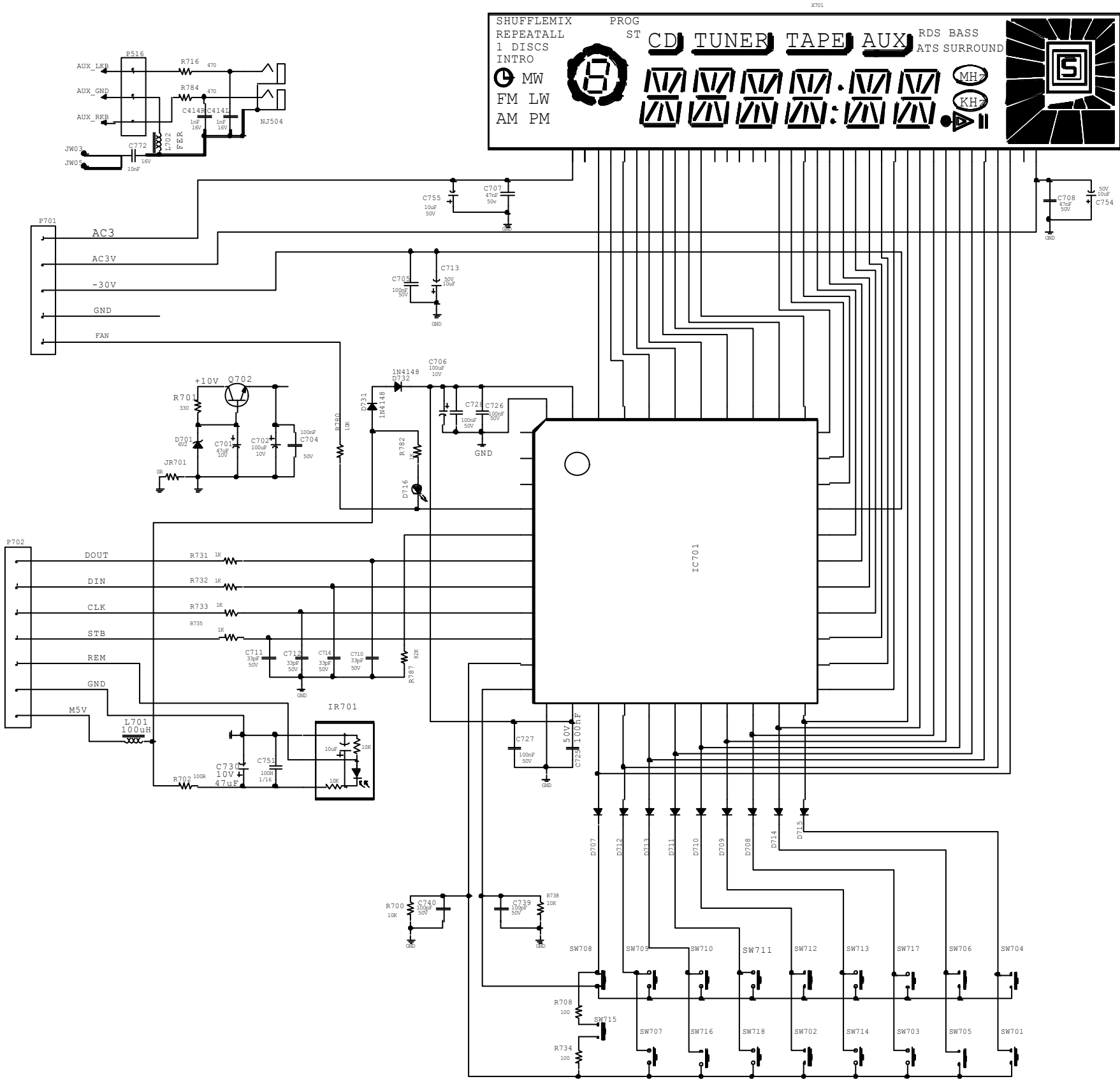
2. Voltages are positive with respect to ground under no signal conditions and volume control minimum

4. \* and  indicates critical safety components. Replace only with those specified from replacement parts list to maintain proper performances and safety of this unit.

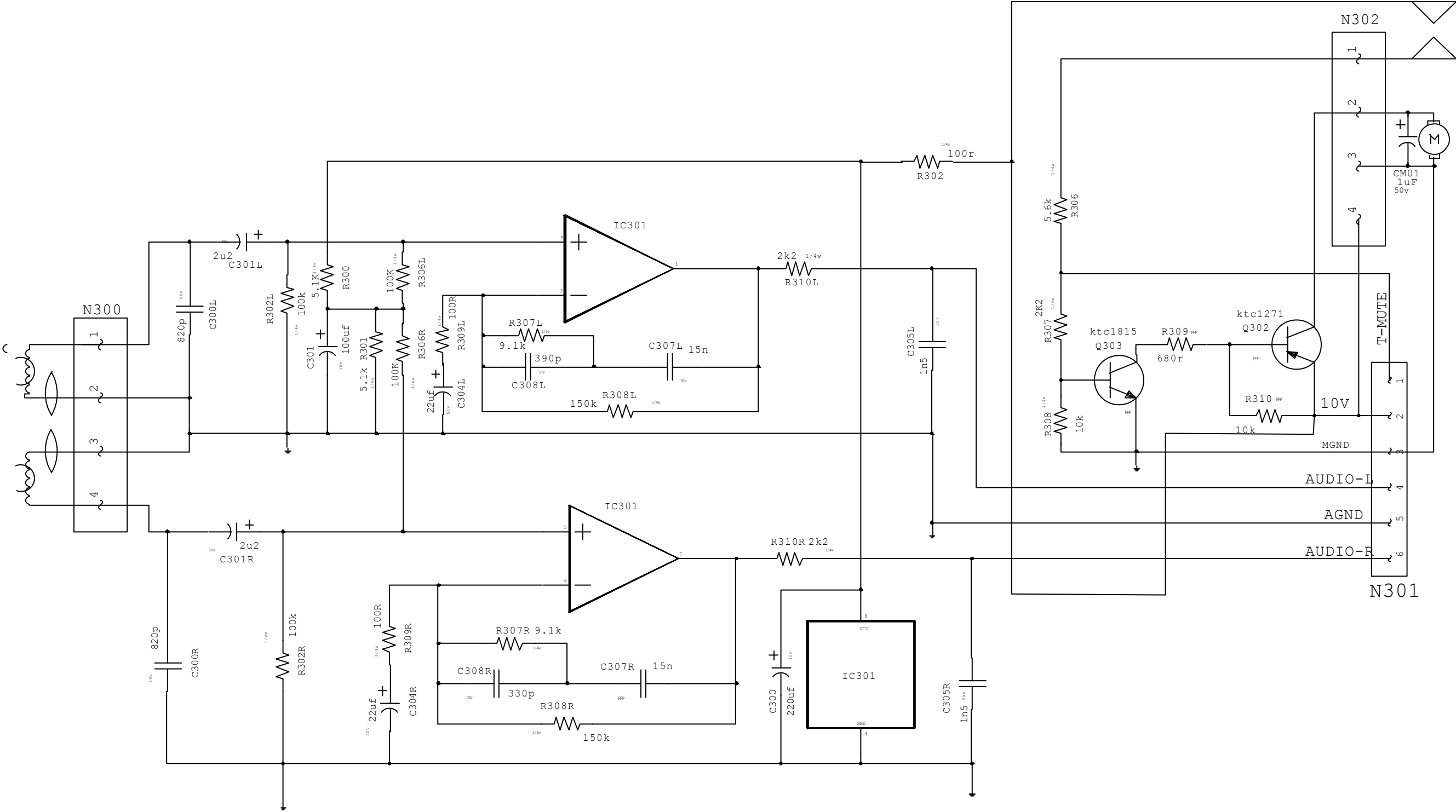


R187: THOMSON PICK-UP      R234: SAMSUNG  
R188: RADIO 200K      R235: RADIO 50K

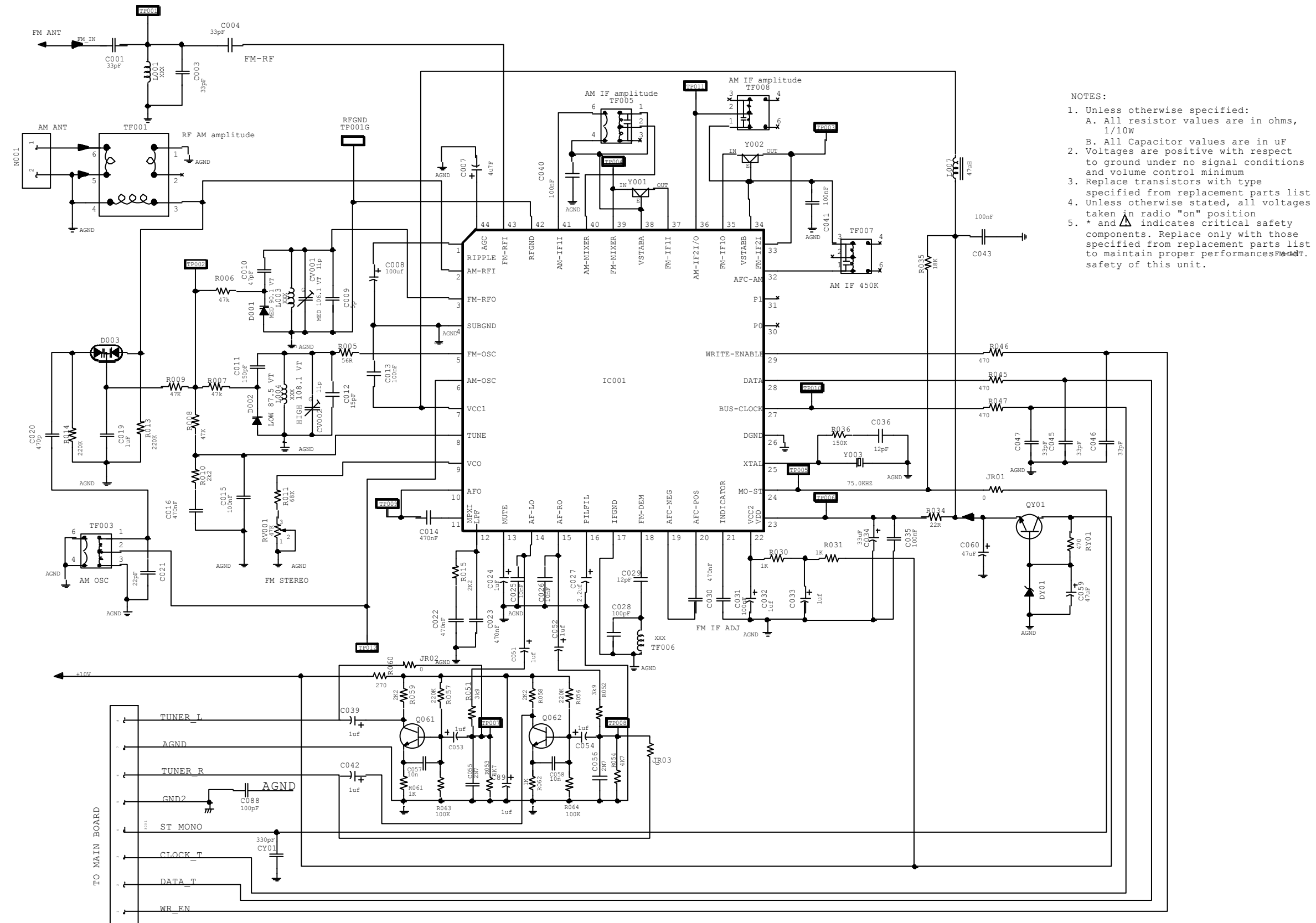
# RS2650/2651 DISPLAY BOARD SCHEMATIC



RS2650/2651 TAPE AUDIO SCHEMATIC



## RS2650/2651 TUNER SCHEMATIC



RS2650/2651 WIRING DIAGRAM

